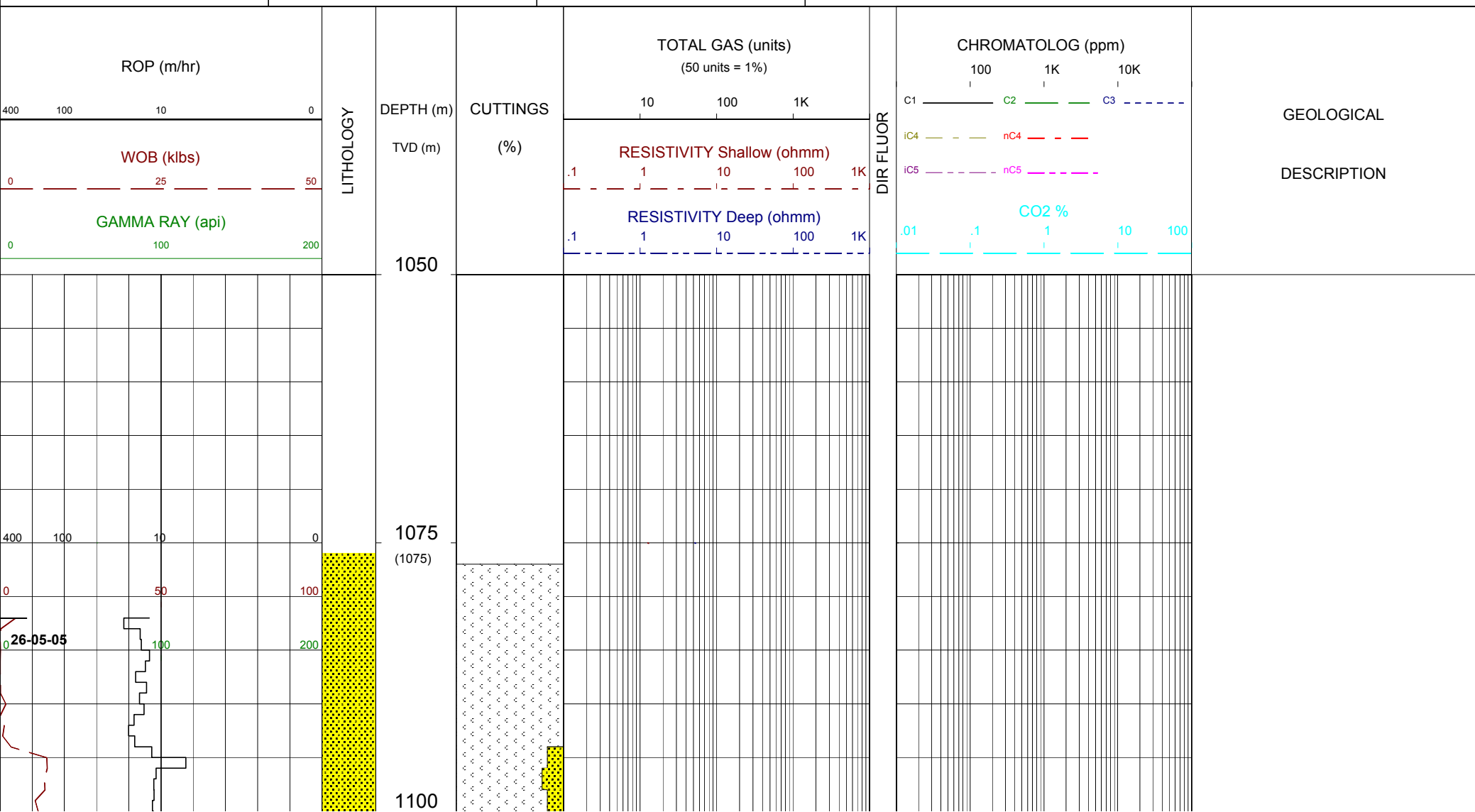
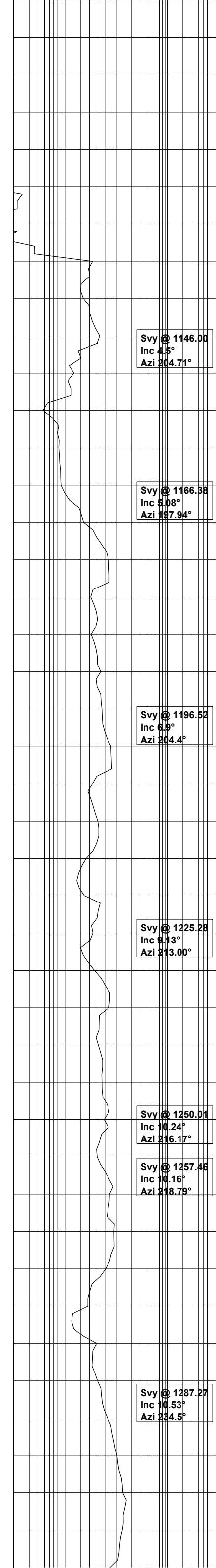
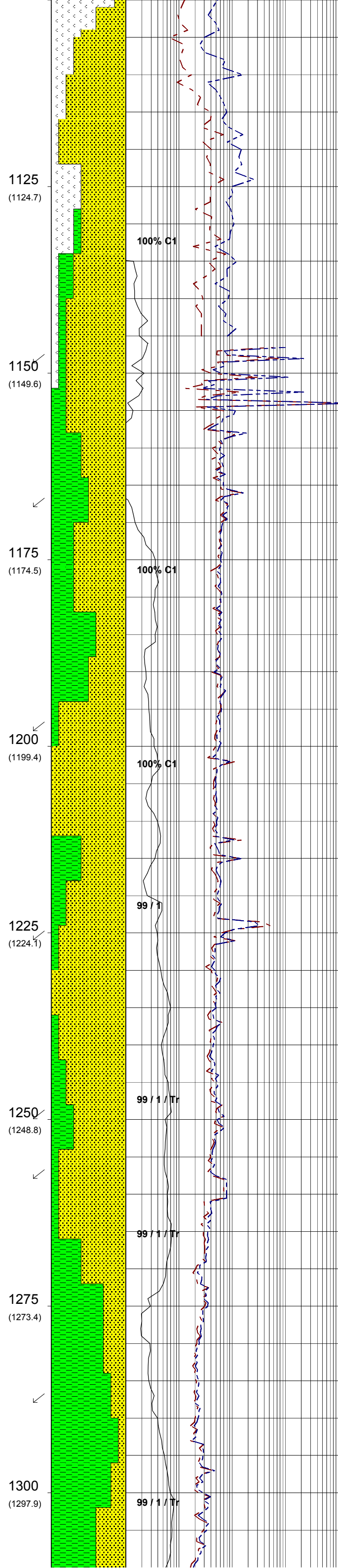
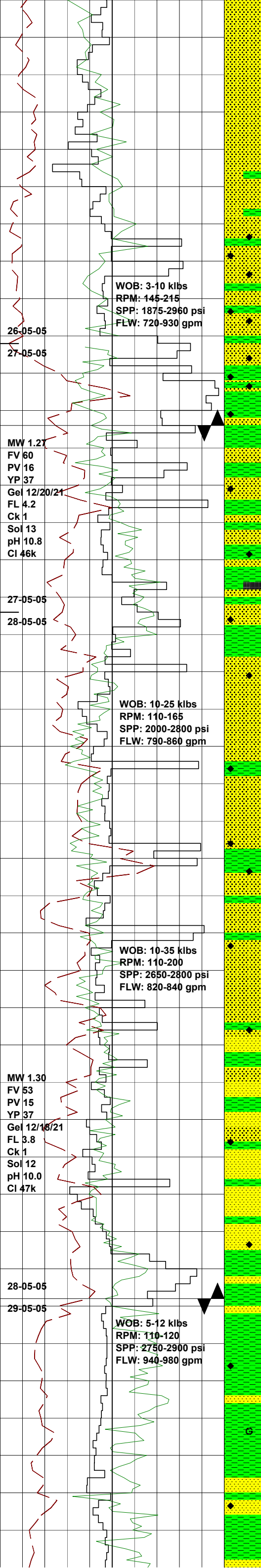


Basin : OTWAY	LAT - RT (m) : 22	Rig : OCEAN PATRIOT	Open Hole:	Cased Hole:	Engineers :D. ADDERLEY
Permit : VIC-P44	Seabed - LAT (m) : 70.8	Spud Date : 27-05-2005	36" 137.4m	30"/20" 137.4m	A. DUNN
State : VICTORIA	Seabed - RT (m) : 92.8	TD Date : 04-06-2005	17.5" 742m	13.375" 727.9m	S. LONG
Country : AUSTRALIA	Lat. : 38°47'13.03"S	Total Depth : 2404.0	12.25" 1998.0	9.625" 1990.06	Loggers : P. MISQUITTA
Scale : 1/ 500	Long. : 142°41'54.49"E	Final Status : COMPLETED	8.5" 2404.0	6.625" 2400.75	S. PROSSER
					N. ELLIOTT

LITHOLOGY Conglomerate Coarse Sandstone Med Sandstone Fine Sandstone Marl Siltstone Carb. Siltstone Calc. Siltstone Clay Limestone Dolomite Coal Calcutite Calcisiltite Calcarenite Volcanic Metamorphic Cement	ACCESSORIES Pyrite Siderite Glauconite Feldspar Mica Ferrous Chert Calcareous Dolomitic Carbonaceous Lithoclast Breccia Foraminifera Corals Inoceramus Bryozoa Plant remains Fossils	DRILLING DATA Casing Shoe Bit Trip Wiper Trip Core DST Deviation Survey MUD DATA MW - Mud Weight FV - Funnel Viscosity (s/qt) PV - Plastic Viscosity (cps) YP - Yield Point (lb/100ftsq) Gel - Gel Strength (10sec) WL - Water Loss (cc/30min) pH - Acidity / Alkalinity Ck - Cake (32nd/inch) Sol - Solids (% vol) Cl - Chlorides (mg/l)	ABBREVIATIONS BOPD - Barrels of Oil Per Day BWPD - Barrels of Water Per Day CG - Connection Gas CO - Circulate Out COND - Condensate c/c - Crush Cut DST - Drill Stem Test FLOW - Flow Rate (gal/min) GCM - Gas Cut Mud GCW - Gas Cut Water GTS - Gas To Surface INJ - Injection of Mist (bbls/hr) LCM - Lost Circulation Material MMCFD - Million Cubic Feet / Day NGTS - No Gas To Surface NOTS - No Oil To Surface NR - No Returns OCM - Oil Cut Mud OG - Over Gauge OH - Open Hole OTS - Oil To Surface Q - Flow Rate REC - Recovery Rmf - Resistivity Mud Filtrate ROP - Rate Of Penetration RPM - Revolutions Per Minute RTSTM - Rate Too Small To Measure Rw - Resistivity water r/r - Ring Residue SCFM - Standard Cubic ft/min (air) SGCM - Slightly Gas Cut Mud SPM - Strokes Per Minute SPP - Stand Pipe Pressure SWC - Side-Wall Core TG - Trip Gas WOB - Weight On Bit
--	---	--	--





Tag top of cement @ 1078.6m
Wash & ream down to hard cement @ 1082m

SANDSTONE: clr-trnsl,yel gry i/p, pred med-crs,mnr f,mod srt,sbang-sbrnd,wk-mod sil cmt,lse & cln,pr-fr inf por,no fluor.

SILTSTONE: brn gry-olv gry,arg-aren,tr carb spks,loc com dissem pyr,occ qtz incl,sft,disp i/p,sbblky-amorph.

SANDSTONE: clr-trnsl-med gry,f-crs grn,pred med-crs,sbang-sbrnd,occ rnd,mod srt,pred lse,occ mod hd aggs w/mod hd sil cmt,arg mtx,tr glauc,abdt dissem & nod pyr,abdt pyr cmt,pr-fr vis & inf por,no fluor.

Casino 4DW2 kicked off from Casino 4 at 1146m at 00:00 hrs on 27-05-05

BIT #9 Hycalog DS43ST
SIZE:12.25" (311mm)JETS:3x14,1x20
IN:1146m OUT:1157 m
RUN:11m HRS:6.4
COND:3/4/CT/C/X/I/WT/PR

BIT #10 Security FXL12D
SIZE:12.25" (311mm)JETS:3x22
IN:1157m OUT:1274m
RUN:117m HRS:13.3
COND:1/1/WT/A/E/I/NO/BHA

SILTSTONE: med-dk gry,pred aren, tr arg,carb i/p,tr dissem pyr, frm-occ mod hd,sbblky

SANDSTONE: clr-trnsl,f-med grn, tr crs,sbrnd-wl rnd,mod-wl srt,pred lse & cln,tr-com pyr nod,tr aggs w/sil cmt,tr pyr cmt,pr-fr vis & inf por,no fluor.

SANDSTONE: clr-trnsl-lt gry,f-med grn,tr crs grs,sbang-sbrnd,wl srt, abdt lse qtz,com mod frm-mod hd aggs w/wh sil cmt,tr glauc,com pyr nod & incl,tr liths,tr Coal frag, pr-fr vis & inf por,no fluor.

SANDSTONE: clr-trnsl,f-med grn, sbang-sbrnd,mod-wl srt,pred lse qtz,tr-com pyr,rr glauc,lith frags com,p-fr vis & inf por,no fluor.

SILTSTONE:med gry-gry brn,aren, com pyr,com carb spks,occ glauc grns,sft-frm,sbblky.

SANDSTONE: clr-trnsl,f-med grn, sbang-sbrnd,mod-wl srt,pred lse qtz,tr-com pyr,rr glauc,lith frags com,pr-fr vis & inf por,no fluor.

SANDSTONE: clr-trnsl,f-med occ crs-v crs,sbrnd-ang pred sbang,pr srt,pred lse w/com vf-f aggs,tr-com pyr,rr glauc,com lith frags,pr-fr vis & inf por,no fluor.

Rmf @ 1240m: 0.08 ohm @ 75°F

SILTSTONE:med gry-gry brn,aren, com pyr,com carb spks,occ glauc grns,sft-frm,sbblky.

SANDSTONE: clr-trnsl,f-med occ crs-v crs,sbrnd-ang pred sbang,pr srt,pred lse w/com vf-f aggs,tr-com pyr,rr glauc,com lith frags,pr-fr vis por,no fluor.

SILTSTONE:med olv brn-med gry, aren,com diss pyr,com carb spks, occ glauc grns,com lith spks sft-frm, sbblky.

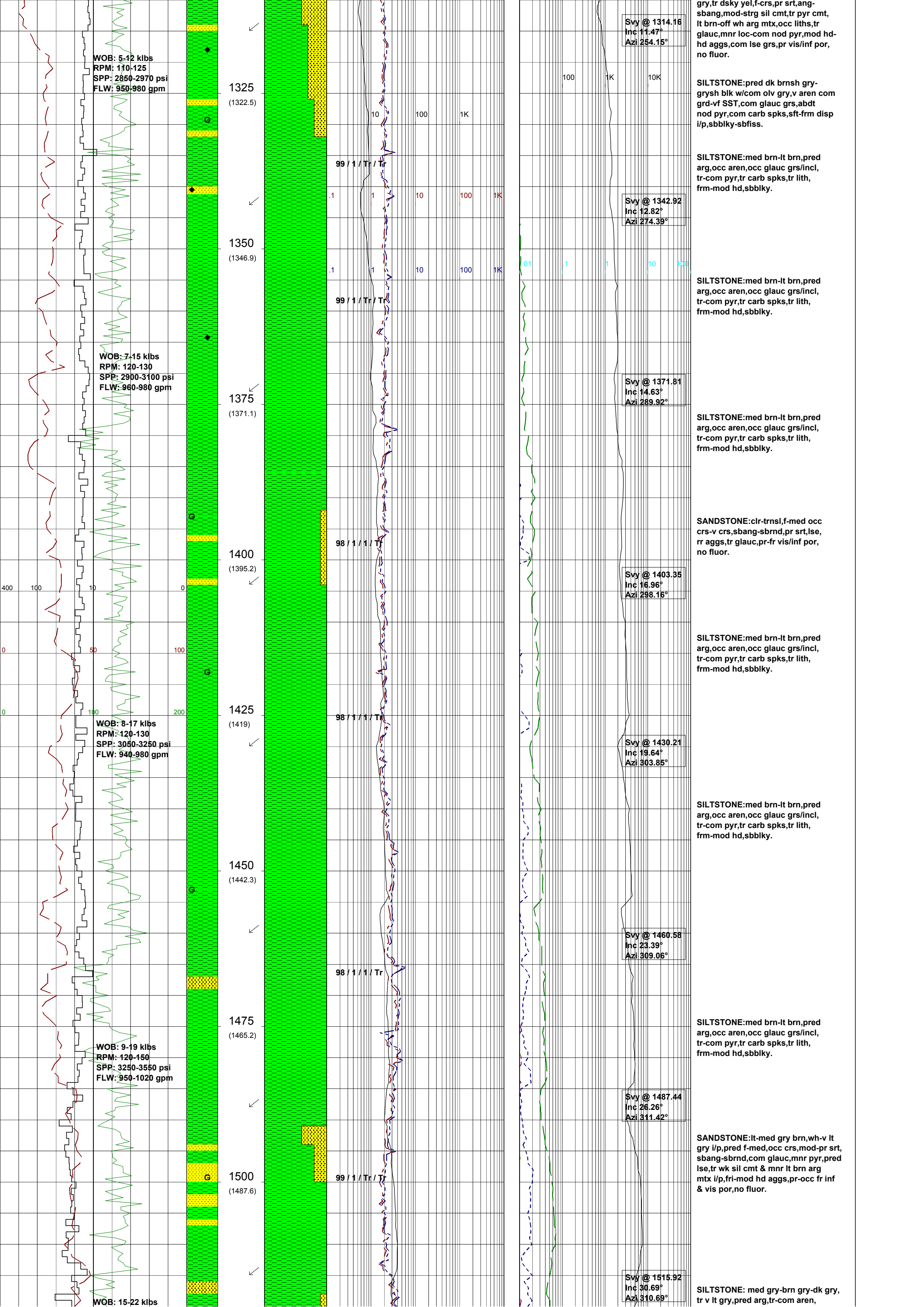
BIT #11 Security FS2663
SIZE:12.25" (311mm)JETS: 9x16
IN: 1274m OUT:1998 m
RUN: 724 m HRS: 29.1
COND: 1-1-WT-A-X-I-NO-TD

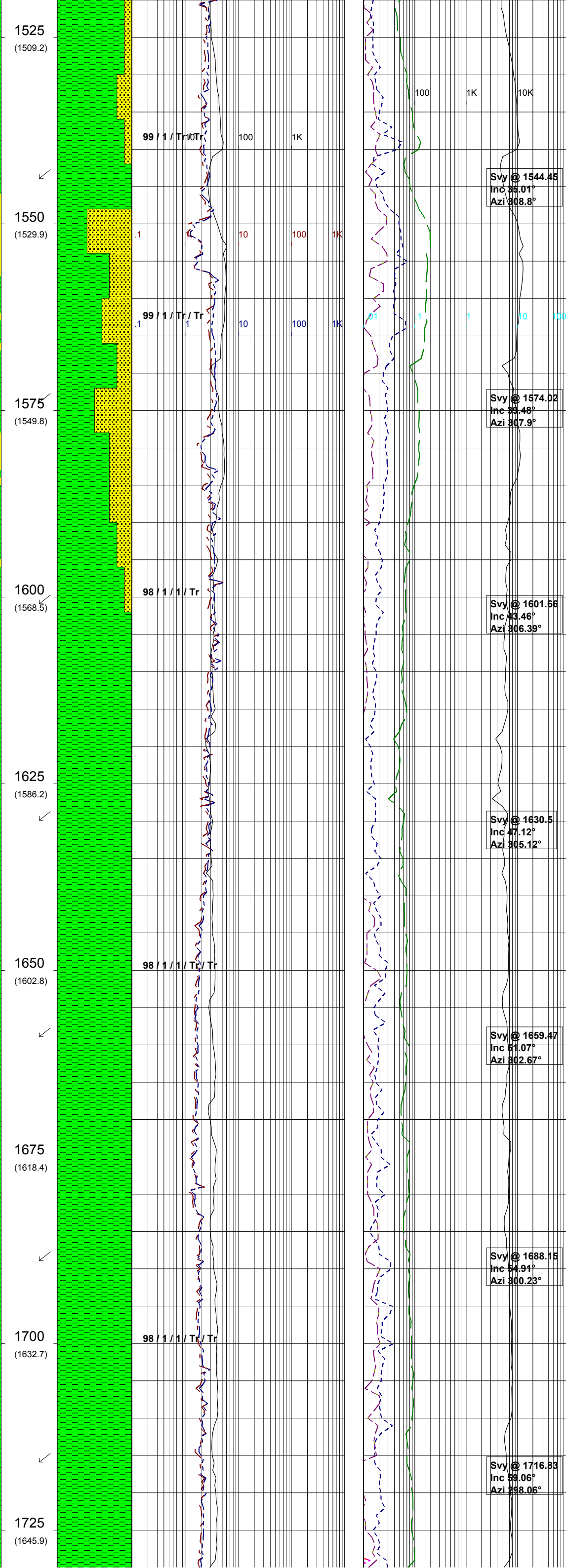
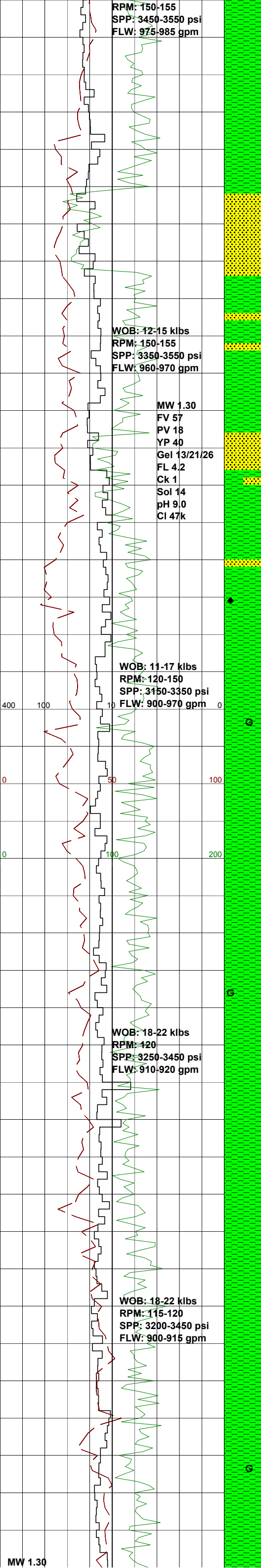
SANDSTONE:clr-trnsl,off wh-lt gry,tr dsky yel,f-crs,pr srt,ang-sbang,mod-strg sil cmt,tr pyr cmt, lt brn-off wh arg mtx,occ liths,tr glauc,mnr loc-com nod pyr,mod hd-hd aggs,com lse grs,pr vis/inf por, no fluor.

SILTSTONE:pred dk brnsh gry-grysh blk w/com olv gry,v aren com grd-vf SST,com glauc grs,abdt nod pyr,com carb spks,sft-frm disp i/p,sbblky-sbfiss.

Rmf @ 1301m: 0.09 ohm @ 74°F

SANDSTONE:clr-trnsl,off wh-lt





com carb spks, tr-com glauc, tr liths, frm-occ mod hd, amorph-sbbkly.

SANDSTONE: clr-trnsl, f-med grn, sbang-sbrnd, wl srt, pred lse & clin qtz, tr glauc, tr lt gry aggs w/wk sil cmt, pr vis & inf por, no fluor.

SANDSTONE: clr-trnsl-v lt gry, com-abdt lt grn, vf-f, sbang-sbrnd, wl srt, pred lse qtz, com aggr w/frm sil cmt, abdt glauc, tr pyr nod/incl, tr carb mat, pr-fr vis & inf por, no fluor.

SILTSTONE: med gry brn-dk gry, tr v lt gry, arg-aren & g/t vf SST i/p, com carb spks, tr-com glauc, tr liths, frm-occ mod hd, amorph-sbbkly.

SANDSTONE: clr-trnsl-v lt gry, tr lt grn, vf-med, sbang-sbrnd, mod srt, pred lse qtz, com aggr w/frm sil cmt, com glauc, tr pyr, tr carb mat, pr-fr vis & inf por, no fluor.

SILTSTONE: lt brn gry-olv gry, pred aren & g/t vf SST i/p, tr liths, tr carb spks, tr-com glauc, sft-frm, amorph-sbbkly

SILTSTONE: lt brn gry-olv gry, pred aren & g/t vf SST, tr liths, tr carb spks, tr-com glauc, sft-frm, amorph-sbbkly

SILTSTONE: med gry, olv gry-olv blk, pred arg, tr aren, com carb spks/strks, sft-frm, amorph-sbbkly.

SILTSTONE: brn gry-olv blk, pred arg, tr aren, com carb spks/strks, frm-mod hd, sbbkly.

SILTSTONE: brn gry-olv blk, pred arg, tr aren, com carb spks/strks, tr glauc, frm-mod hd, sbbkly.

SILTSTONE: brn gry-olv blk, pred arg, tr aren, com carb spks/strks, tr glauc, frm, sbbkly.

SILTSTONE: brn gry-olv blk, mnr gry brn, dom arg, tr aren, com carb spks, tr glauc, frm-mod hd, sbbkly.

SILTSTONE: brn gry-olv blk, pred arg, tr aren, com carb spks/strks, tr glauc, frm-mod hd, sbbkly.

SILTSTONE: brn gry-olv blk, gry brn i/p, pred arg, tr aren, com carb

Svy @ 1544.45
 Inc 35.01°
 Azi 308.8°

Svy @ 1574.02
 Inc 39.48°
 Azi 307.9°

Svy @ 1601.66
 Inc 43.46°
 Azi 306.39°

Svy @ 1630.5
 Inc 47.12°
 Azi 305.12°

Svy @ 1659.47
 Inc 51.07°
 Azi 302.67°

Svy @ 1688.15
 Inc 54.91°
 Azi 300.23°

Svy @ 1716.83
 Inc 59.06°
 Azi 298.06°

FV 54
PV 18
YP 38
Gel 13/20/25
FL 4.2
Ck 1
Sol 14
pH 8.9
Cl 47k

brn i/p, pred arg, tr aren, com carb
spks, tr glauc, frm-mod hd, sbblky.

WOB: 16-27 klbs
RPM: 120-155
SPP: 3150-3450 psi
FLW: 910-975 gpm

1750
(1657.8)

98 / 1 / 1 / Tr / Tr

Svy @ 1745.43
Inc 62.89°
Azi 296.17°

SILTSTONE: brn gry-olv blk, pred
arg, tr aren, com carb spks/strks,
tr glauc, frm, sbblky.

29-05-05
30-05-05

.1 1 10 100 1K

1775
(1668.7)

98 / 2 / Tr / Tr / Tr

Svy @ 1775.14
Inc 65.13°
Azi 291.82°

SILTSTONE: brn gry-olv blk, gry
brn i/p, pred arg, tr aren, com carb
spks, tr glauc, frm-mod hd, sbblky.

WOB: 18-28 klbs
RPM: 145-155
SPP: 3150-3400 psi
FLW: 960-975 gpm

1800
(1678.9)

98 / 2 / Tr / Tr / Tr

Svy @ 1803.18
Inc 66.82°
Azi 288.55°

Carbide Lag Check @ 1796m
Theor. Stks: 8088
Actual Stks: 10320
Hole Overgauge: 58.1%
Ave Hole Size: 14.91" (379mm)

SILTSTONE: gry brn-dk olv gry, pred
arg, tr aren, tr lse v crs qtz grs, tr
carb, tr glauc, tr nod pyr, frm, sbblky.

400 100 0

1825
(1688.8)

97 / 3 / Tr / Tr / Tr

Svy @ 1832.1
Inc 67.00°
Azi 288.55°

SILTSTONE: dk-med gry brn, arg,
tr glauc grs, tr-com nod pyr, frm,
disp i/p, sbblky-blky.

WOB: 20-28 klbs
RPM: 140-155
SPP: 3100-3400 psi
FLW: 960-975 gpm

1850
(1698.1)

97 / 3 / Tr / Tr / Tr

SILTSTONE: dk-med gry brn occ pl
brn, arg, tr glauc grs, tr-com nod pyr,
tr lith, frm, disp i/p, sbblky-blky.

0 50 100 0

0 100 200 0

1875
(1706.9)

97 / 3 / Tr / Tr / Tr

Svy @ 1861.01
Inc 70.0°
Azi 287.81°

SILTSTONE: dk-med gry brn occ pl
brn, arg, tr glauc grs, tr-com nod pyr,
tr lith, frm, sbblky.

WOB: 25-35 klbs
RPM: 145-160
SPP: 3200-3400 psi
FLW: 955-975 gpm

1900
(1715.3)

97 / 3 / Tr / Tr / Tr

Svy @ 1889.71
Inc 70.27°
Azi 288.54°

SILTSTONE: dk-med gry brn occ pl
brn, arg, tr glauc grs, tr-com nod pyr,
tr lith, com wh arg mat, frm, sbblky.

1925
(1723.4)

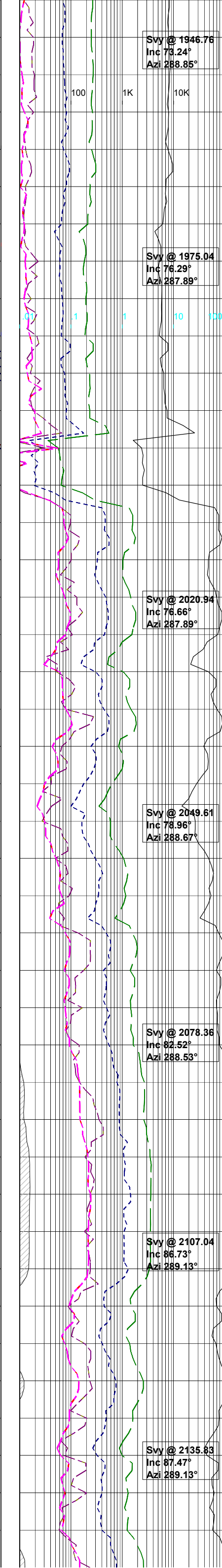
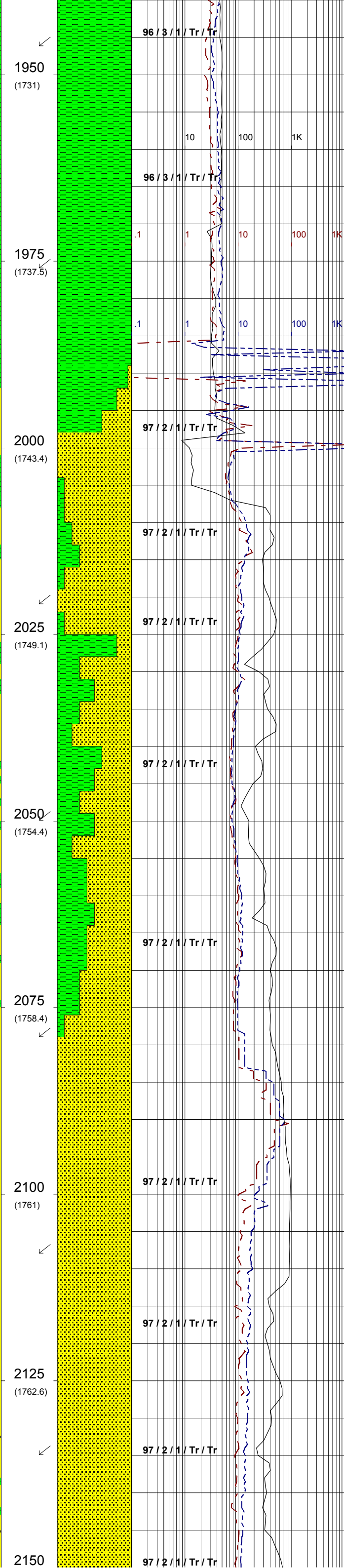
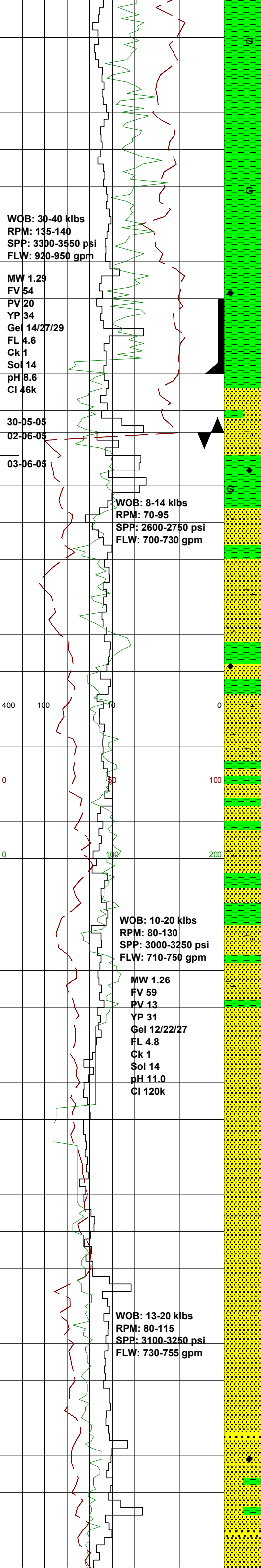
97 / 2 / 1 / Tr / Tr

Svy @ 1918.35
Inc 71.02°
Azi 288.14°

SILTSTONE: dk-med gry brn, arg, com
nod glauc grs, tr nod pyr, tr lith, com
wh arg mat, frm-hd, blky-sbblky.

WOB: 30-40 klbs
RPM: 135-150
SPP: 3300-3550 psi
FLW: 950-970 gpm

SILTSTONE: med gry-brn gry-olv blk,
arg-aren, glauc i/p, tr carb spks,
frm-mod hd, sbblky.



SILTSTONE: olv gry-olv blk,brn gry i/p,arg-tr aren,glauc i/p,tr carb spks,frm-mod hd,sbblky.

SILTSTONE: pred olv gry,olv blk i/p,arg-tr aren,glauc i/p,tr carb spks,frm-mod hd,sbblky.

SILTSTONE: olv gry-olv blk,arg-aren, glauc i/p,tr pyr nod,tr carb spks, frm-mod hd,sbblky.

SILTSTONE: olv gry-olv blk,arg-abdt aren,glauc i/p,tr pyr nod,tr carb spks,frm-mod hd,sbblky.

9 5/8" (244mm) Casing Shoe set @ 1990.06m

SILTSTONE: olv gry-olv blk,arg-abdt aren,glauc i/p,tr pyr nod,tr carb spks,frm-mod hd,sbblky.

SANDSTONE: clr-trnsl,tr lt gry, f-crs,pred f-med,ang-sbrnd,occ rnd, mod-pr srt,pred lse qtz,tr pyr nod, tr glauc,occ aggr w/wk-frm wh sil cmt,pr vis & fr inf por,no fluor.

BIT #12 Security FMF3553
SIZE: 8.5" (216mm) JETS: 5x16
IN: 1998m OUT: 2404m
RUN: 406m HRS: 22.4
COND: 1-2-CT-G-X-I-NO-TD

SANDSTONE: clr-trnsl,tr lt gry, pred f-med occ crs,sbang-sbrnd, mod-pr srt,pred lse,com aggs,wk calc cmt,com arg/sity mtx,tr glauc, tr pyr nod,pr vis & fr inf por, no fluor.

SANDSTONE: clr-trnsl,tr lt gry, pred f-med occ crs,sbang-sbrnd, mod-pr srt,com-abdt aggs,mod-strg calc cmt,com arg/sity mtx,tr glauc, tr pyr nod,pr vis & fr inf por, no fluor.

SANDSTONE: clr-trnsl,off wh occ tn,f-med,sbang-sbrnd,mod srt, pred aggs w/occ lse grs,abdt arg/ sity mtx,com liths,com carb incl, fr inf por,pr vis por,no fluor.

SILTSTONE: med-dk gry,aren, com carb spks & lams,rr glauc grs,frm-fri,sbblky-sbfiiss.

SANDSTONE: clr-trnsl,off wh occ tn,f-med,sbang-sbrnd,mod-pr srt, pred aggs w/abd lse f-med com crs- v crs grs,abdt arg/sity mtx,com liths com carb incl,fr inf por,pr vis por, no fluor.

SILTSTONE: med-dk gry,aren, com carb spks & lams,rr glauc grs,frm-fri,sbblky-sbfiiss.

Rmf @ 2064m: 0.05 ohm @ 73°F

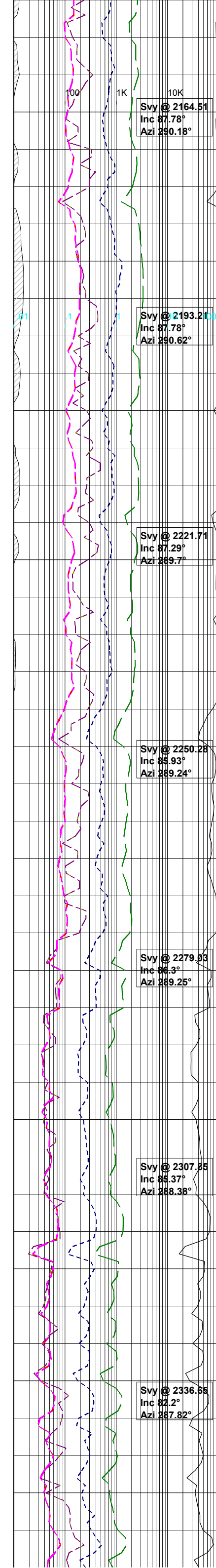
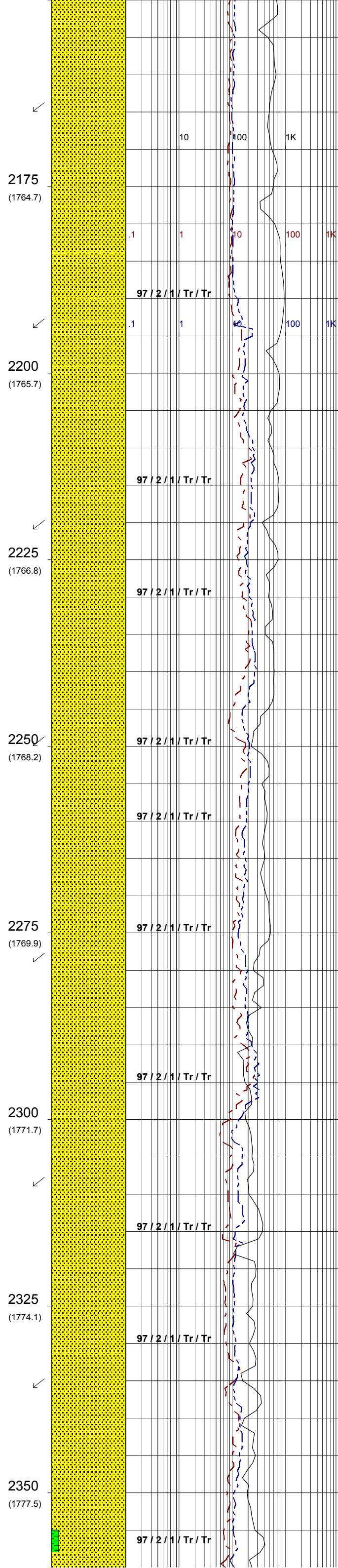
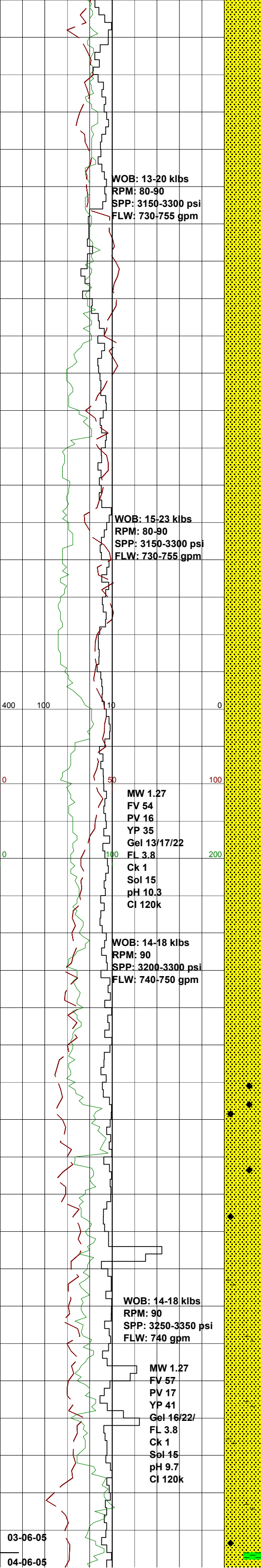
SANDSTONE: clr-trnsl,off wh occ tn,f-med,sbang-sbrnd,mod-wl srt, pred lse w/com aggs,occ v crs grs, com arg/sity mtx,com liths occ carb incl,fr inf por,pr vis por,no fluor.

SANDSTONE: clr-trnsl,f-v crs,sbang-sbrnd,pr srt,tr wk sil cmt,lse, cln w/tr lt arg mtx,tr carb det, gd inf por,no fluor.

SANDSTONE: clr-trnsl,med-crs, sbang-sbrnd,pr srt,tr wk sil cmt,lse, cln w/tr lt gry arg mtx,com carb det, gd inf por,no fluor.

SANDSTONE: clr-trnsl,med-rr crs, sbang-sbrnd,mod srt,tr wk sil cmt, lse,cln w/tr lt gry arg mtx,com carb det,rr qtz o/gths,gd inf por,no fluor.

SANDSTONE: clr-trnsl,f-crs,sbang-sbrnd,pr srt,mod sil cmt,com aggs w/abd lt gry arg mtx,com carb det, tr pyr,tr SLTST,fr-pr inf por,no fluor.



SANDSTONE:clr-trnsi,f-crs,sbang-sbrnd,mod srt,wk sil cmt,occ aggs w/com lt gry arg mtx,tr carb det, fr-pr inf por,no fluor.

SANDSTONE:clr-trnsi,f-med,sbang-sbrnd,wl srt,abdt lse,fri-frm aggs w/wk sil cmt,lt gry arg mtx,tr-com blk liths,fr vis por, fr-gd inf por, no fluor.

SANDSTONE:clr-trnsi,tr yel-org,f-med,sbang-sbrnd,wl srt,pred lse,occ aggs w/wk sil cmt,lt gry arg mtx,tr carb frags,com blk liths,fr vis por, fr-gd inf por,no fluor.

SANDSTONE:clr-trnsi,tr yel-org,f-med,sbang-sbrnd,wl srt,pred lse,occ aggs w/wk sil cmt,lt gry arg mtx,tr carb frags,com blk liths,fr vis por, fr-gd inf por,no fluor.

SANDSTONE:clr-trnsi,tr yel-org,f-med,sbang-sbrnd,wl srt,pred lse,occ aggs w/wk sil cmt,lt gry arg mtx,tr carb frags,com blk liths,fr vis por, fr-gd inf por,no fluor.

SANDSTONE:clr-trnsi,f-med,sbang-sbrnd,wl srt,pred lse,qtz,tr-com crs ang sil ovghts,tr chert frags,com blk lith frags,fr-gd vis & inf por, no fluor.

SANDSTONE:clr-trnsi,f-med,sbang-sbrnd,wl srt,pred lse,qtz,tr aggs w/wk sil cmt,lt gry arg mtx,tr carb frags,abdt blk liths,tr chert frags,fr vis por, fr-gd inf por,no fluor.

SANDSTONE:clr-trnsi,f-crs,sbang-sbrnd,pr srt,pred lse qtz,tr aggs w/frm sil cmt,wh sli calc mtx,com crs-vcrs ang-sbang sil frags,com dk gry lith frags,tr-com chert frags,fr -pr vis por,fr-gd inf por,no fluor.

SANDSTONE:clr-trnsi,f-med,sbang-sbrnd,wl srt,pred lse qtz,tr aggs w/frm sil cmt,tr crs-vcrs ang-sbang sil frags,com dk gry lith frags, abdt pyr nod/cmt,tr-com chert frags, fr-pr vis por,fr-gd inf por,no fluor.

SANDSTONE:clr-trnsi,f-crs,pred f-med,sbang-sbrnd,mod srt,pred lse qtz,tr aggs w/frm sil cmt,wh sli calc mtx,fr-com pyr nod,fr-com dk gry lith frags,fr-pr vis por,fr-gd inf por,no fluor.

SANDSTONE:clr-trnsi,f-med,sbang-sbrnd,wl srt,pred lse qtz,rr aggs w/frm sil cmt,wh mod calc mtx,tr-com dk gry lith frags,rr pyr nod, fr-pr vis por,fr-gd inf por,no fluor.

SANDSTONE:clr-trnsi,f-med,sbang-sbrnd,mod srt,pred lse qtz,rr aggs w/frm sil-calc cmt,wh calc mtx,tr-com dk gry lith frags,rr pyr nod, fr-pr vis por,fr inf por,no fluor.

SILTSTONE:med-dk gry-olv gry brn, aren i/p,com carb inc,frm-hd,sbbkly.

SANDSTONE:clr-trnsi pl gry-wh, vf-v crs pred f-crs,sbang-ang,

