



GAS RATIO LOG

WELL : CASINO 4DW1



FROM (m): 1250 TO (m): 1680 SCALE: 1/ 500

GENERAL DATA

Client : SANTOS LTD
Country : AUSTRALIA
Permit : VIC-P44
Basin : OTWAY
Well Type : HORIZ. PRODUCTION
Rig Name : OCEAN PATRIOT

LOCATION DATA

Latitude : 38°47'13.03"S
Longitude : 142°41'54.49"E
RT - MSL (m): 22
Water Depth (m): 70.8

CASING

762/406mm (30"/16") Shoe (m): 137.4m
340mm (13.375") Shoe (m): 727.9m

FINAL WELL DATA

MD - Drillers Depth (m): 1662m
TVD SS (m): 1627.3m
Date Well Spudded : 21-05-2005
Date TD Reached : 22-05-2005
Final Status : Plug & Sidetrack

GAS RATIOS FORMULAE

GAS WETNESS RATIO (Wh)
 $GWR = (C2 + C3 + C4 + C5) / (C1 + C2 + C3 + C4 + C5) * 100$

LIGHT TO HEAVY RATIO (Bh)
 $LHR = (C1 + C2) / (C3 + C4 + C5)$

OIL CHARACTER QUALIFIER (Ch)
 $OCQ = (C4 + C5) / (C3)$

LITHOLOGY LEGEND

	Limestone		Conglomerate		Mica
	Coal		Calcilutite		Ferrous
	Clay		Carb. Siltstone		Chert
	Siltstone		Calc. Siltstone		Calcareous
	Med Sandstone		Pyrite		Dolomitic
	Coarse Sandstone		Siderite		Carbonaceous
	Fine Sandstone		Glauconite		Lithoclast
	Marl		Feldspar		Breccia

1 unit = 200 ppm methane equivalent in air

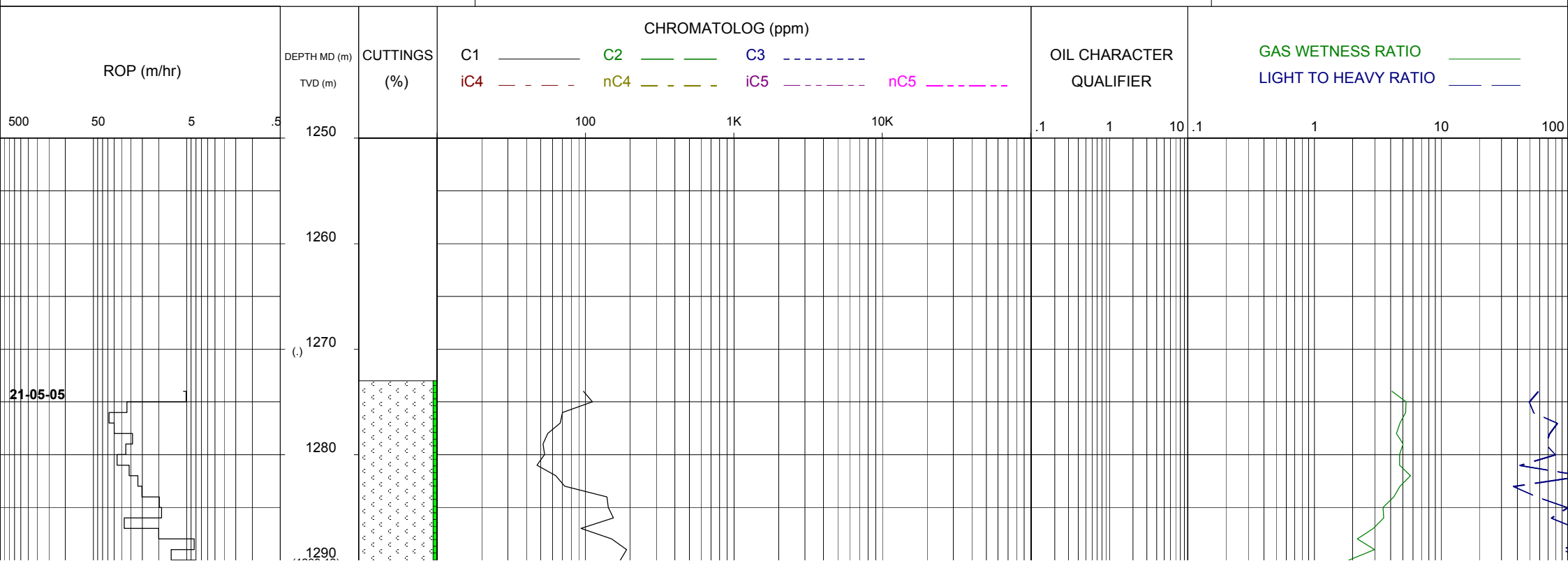
GEOSERVICES CREW

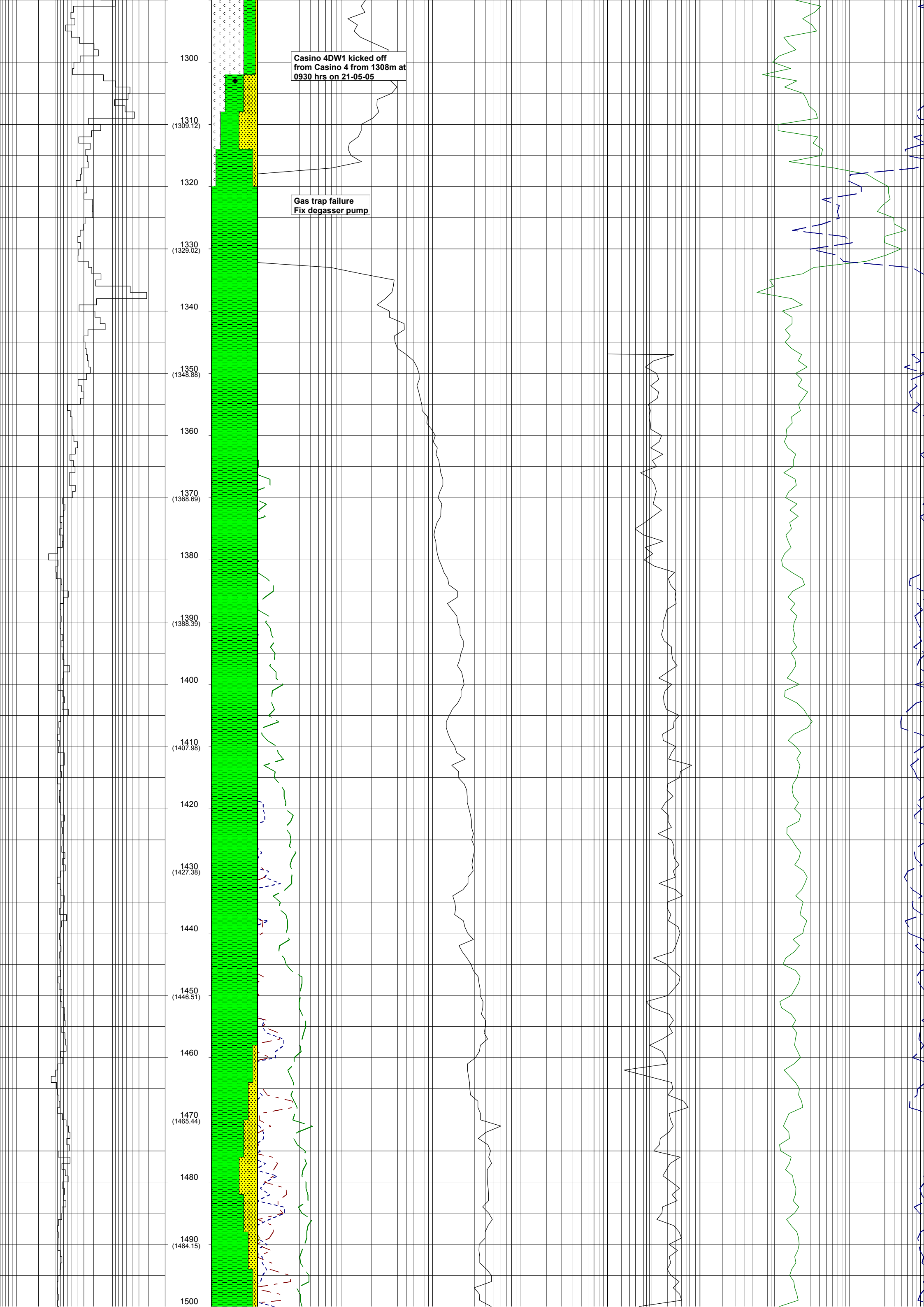
ALS ENGINEERS

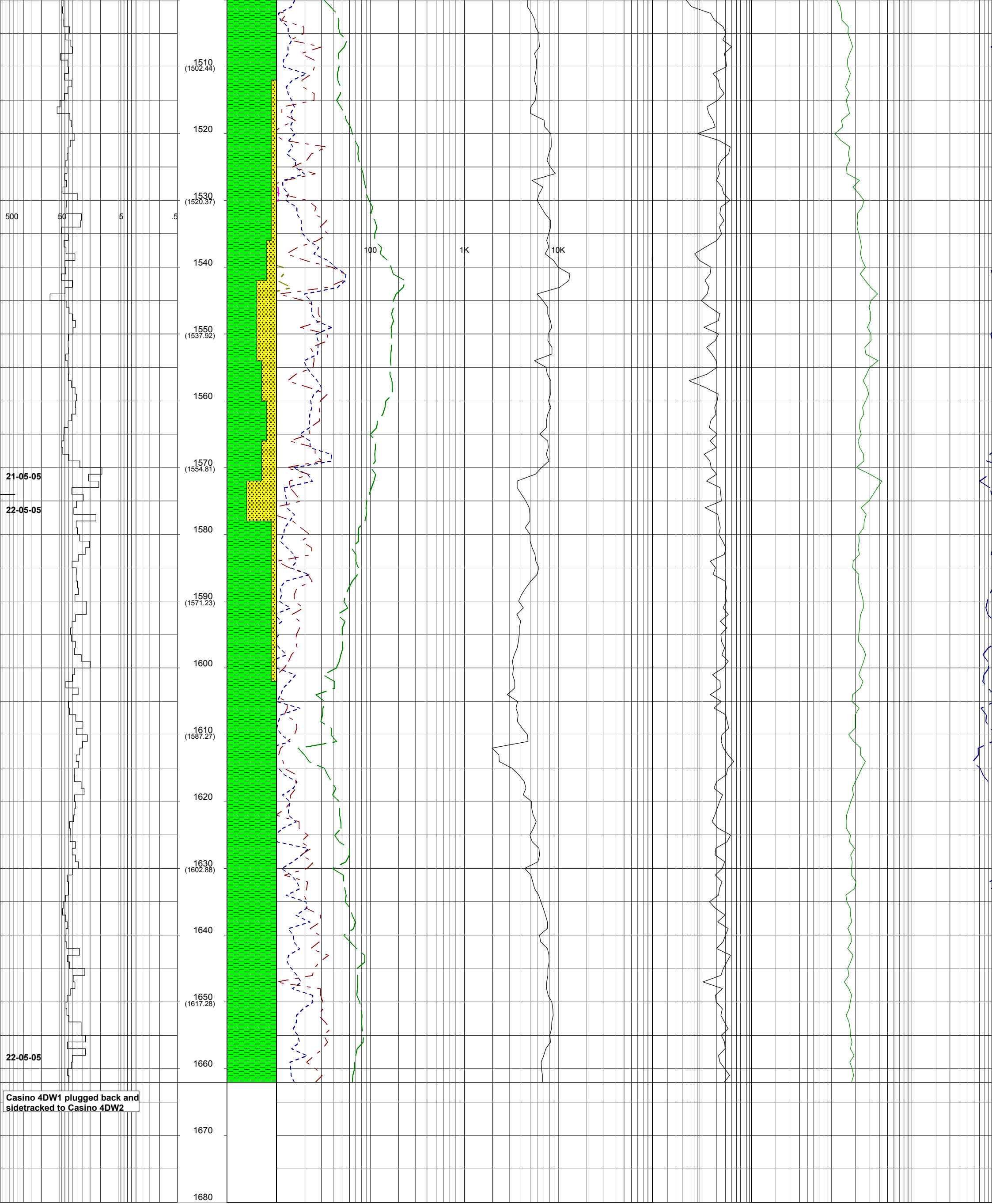
D. ADDERLEY
S. LONG

MUDLOGGERS

P. MISQUITTA
S. PROSSER







21-05-05

22-05-05

22-05-05

Casino 4DW1 plugged back and sidetracked to Casino 4DW2

