



**Baker Atlas**

FILE NO: \_\_\_\_\_ COMPANY: **SANTOS & PARTNERS**  
 WELL: **CASINO-4**  
 API NO: \_\_\_\_\_ FIELD: **CASINO**  
 VIC P-44 \_\_\_\_\_ RIG NAME: **OCEAN PATRIOT** COUNTRY: **AUSTRALIA**

Ver. 3.87 LOCATION: LAT: **38 DEG 47' 13.03" SOUTH**  
 SCALE 1:500 LONG: **142 DEG 41' 54.49" EAST**  
 EASTING: **647.518.19M E**  
 NORTHING: **5.705.495.28M N**

PERMANENT DATUM \_\_\_\_\_ LAT \_\_\_\_\_ ELEVATION **0 M**  
 LOG MEASURED FROM \_\_\_\_\_ RT \_\_\_\_\_ 22 M ABOVE P.D.  
 DRILL MEAS. FROM \_\_\_\_\_ RT \_\_\_\_\_  
 OTHER SERVICES: DLL/MLL/GR  
 MREX/GR  
 ELEVATIONS: KB —  
 DF 22 M  
 GL -70.8 M

DATE	19-MAY-2005	TRIP	1
SERVICE ORDER	516574		
DEPTH DRILLER	1825 M		
DEPTH LOGGER	1810.5 M (HUD)		
BOTTOM LOGGED INTERVAL	1802 M		
TOP LOGGED INTERVAL	1700 M		
CASING DRILLER	340 MM		727.87 M
CASING LOGGER	729 M		
BIT SIZE	311 MM		
TYPE OF FLUID IN HOLE	KCL / IDCAP D		
DENSITY	1.3 G/C3		64 S
PH	9		3.4 C3
SOURCE OF SAMPLE	FLOWLINE		
RM AT MEAS. TEMP.	0.104 OHMM		18.17 DEGC
RMF AT MEAS. TEMP.	0.085 OHMM		17.88 DEGC
RMC AT MEAS. TEMP.	0.301 OHMM		18.54 DEGC
SOURCE OF RMF	MEASURED		MEASURED
RM AT BHT	0.045 OHMM		69.4 DEGC
TIME SINCE CIRCULATION	9 HRS		
MAX. RECORDED TEMP.	69.4 DEGC		
EQUIP. NO.	8677		PERTH
RECORDED BY	S. ARELLANO / M. REYES		
WITNESSED BY	SUBRAMANIAN / GIULIANO		

IN MAKING INTERPRETATIONS OF LOGS OUR EMPLOYEES WILL GIVE CUSTOMER THE BENEFIT OF THEIR BEST JUDGEMENT. BUT SINCE ALL INTERPRETATIONS ARE OPINIONS BASED ON INFERENCES FROM ELECTRICAL OR OTHER MEASUREMENTS, WE CANNOT, AND WE DO NOT GUARANTEE THE ACCURACY OR CORRECTNESS OF ANY INTERPRETATION. WE SHALL NOT BE LIABLE OR RESPONSIBLE FOR ANY LOSS, COST, DAMAGES, OR EXPENSES WHATSOEVER INCURRED OR SUSTAINED BY THE CUSTOMER RESULTING FROM ANY INTERPRETATION MADE BY ANY OF OUR EMPLOYEES.

BOREHOLE RECORD		
BIT SIZE	FROM	TO
914 MM	SEABED	137.4 M
445 MM	137.4 M	742 M
311 MM	742 M	1825 M

CASING RECORD				
SIZE	WEIGHT	GRADE	FROM	TO
762 MM	N/A	X56	SEABED	137.4 M
340 MM	107 KG/M	L80	SEABED	727.87 M

**REMARKS**

RUN 2 TRIP 1: \*

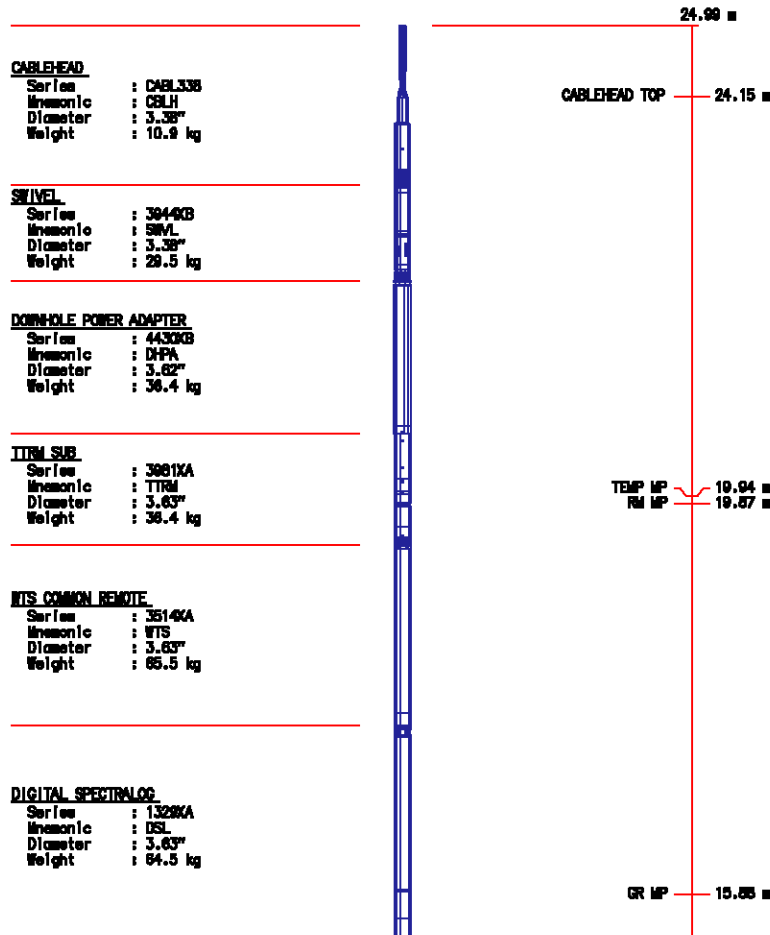
- LOG CORRELATED TO DLL/MLL/GR BY BAKER ATLAS DATED 18-05-2005
- TOOL ZEROED @ 12:15 ON 19-05-2005 WITH A TIDAL CORRECTION OF -0.4 MTS
- CIRCULATION STOPPED AT 04:30 ON 19-MAY-2005
- HUNG UP DEPTH (HUD) LOGGED @ 1810.5 M
- CASING LOGGED @ 729 M.
- ADDITIONAL MUD PROPERTIES:  
 PV/YP: 24 / 31  
 SALINITY: 40000 MG/L ==> 55384 PPM  
 BARITE: % ; KCL: 6%  
 SOLIDS: 13%; OIL: 0%; WATER: 87%.
- MAX DEVIATION = 4.65 DEG @ 1301 M (PROVIDED BY CUSTOMER)
- MAX MUM TEMPERATURE RECORDED: 69.4 DEGC

- \*. ZDL/CN/DSL/MREX RUN IN COMBINATION
- \*. REPEAT SECTION NOT LOGGED BY CUSTOMER'S REQUEST.
- \*. ALL SCALES & PRESENTATIONS SET IN ACCORDANCE TO THE LOGGING PROGRAM, AND CUSTOMER REQUIREMENTS BOOK
- \*. GR RECORDED WITH BOTH LIGHT AND NO FILTER
- \*. CALIPER RECORDED WITH NO FILTER
  
- \*. ZDL/CN RUN DECENTRALISED. BOWSPRING DECENTRALIZER USED
- \*. ZDEN & PE RECORDED WITH CHISM FILTER OFF
- \*. NEUTRON RUN IN LIMESTONE MATRIX
- \*. ZDL PRESENTED WITH LIMESTONE SCALES
- \*. PRESENTED NEUTRON POROSITY, CNC, CORRECTED FOR BOREHOLE SIZE AND SALINITY USING THE DENSITY CALIPER, AND A SALINITY OF 40000 MG/ => 55384 PPM

### EQUIPMENT DATA

RUN	TRIP	TOOL	SERIES NO.	SERIAL NO.	POSITION
2	1	SWIVEL	3944XB	10127260	FREE
2	1	PWR ADAPT	4430XB	190443	FREE
2	1	TTRM	3981XA	10045152	FREE
2	1	COMM REMOTE	3514XB	178699	FREE
2	1	GR/DSL	1329XB	184113	FREE
2	1	CN	2446XA	153093	DECENTRALISED
2	1	ZDL	2228EA/2228MA	185478/188262	PAD DEVICE
2	1	MREX	3218QB	10076158	DECENTRALISED
2	1	MREX	3218EA/3218MA	403512/10074197	DECENTRALISED

## INSTRUMENT CONFIGURATION



**COMPENSATED NEUTRON**  
 Series : 2448KA  
 Insonic : CN  
 Diameter : 3.63"  
 Weight : 66.2 kg

LSN MP 13.88 m  
 SSN MP 13.77 m

**Z-DENS LOG**  
 Series : 2228KA  
 Insonic : ZDL  
 Diameter : 4.88"  
 Weight : 213.6 kg

SSD MP 8.51 m  
 CAL / ZSPEC MP 8.41 m

**MREX CAPACITOR CHARGER SUB**  
 Series : 3218PA  
 Insonic : MREX  
 Diameter : 3.62"  
 Weight : 80.0 kg

**MREX ELECTRONICS**  
 Series : 3218EA  
 Insonic : MREX  
 Diameter : 5.00"  
 Weight : 80.9 kg

**MREX MAGNET**  
 Series : 3218MA  
 Insonic : MREX  
 Diameter : 5.00"  
 Weight : 140.9 kg

ANTENNA 1.50 m

**BULL FLUG 3 1/8**

0.00 m

TOTAL LENGTH: 25.05 m  
 TOTAL WEIGHT: 841.4 kg  
 MAX DIAMETER: 0'5.00"

**MAIN LOG SCALE 1:500**

ECLIPS 5.0 Nov 26, 2003  
 Updates: 1,2,3,32

Perplt /main/59

Cplot 7.09  
 Pdf\_Cpp /main/16

Thu May 19 18:36:19 2005  
 Fileview 4.67

**PARAMETER AND FILTER SUMMARY REPORT**

FILE: /data/casino4/suite1/1850b03.prm  
 LOGGING MODE: DEPTH DIRECTION: UP  
 TOP DEPTH: 1706.245 m BOTTOM DEPTH: 1816.141 m

### SYMMETRIC FILTER

MEASUREMENT TYPE	PARAMETER	VALUE	UNITS	INTERVAL (m)	
CHT	FILTER ( )	medium (1)		TOP	BOTTOM
SPEED	FILTER ( )	medium (1)		"	"
TENSION	FILTER ( )	medium (1)		"	"
GR	FILTER ( )	light (2)		"	"
CN	FILTER ( )	medium (1)		"	"
X AXIS CALIPER	FILTER ( )	no filter (0)		"	"
	FILTER (.h)	no filter (0)		"	"
	FILTER (.l)	no filter (0)		"	"
ZDL	FILTER ( )	medium (1)		"	"

### BOREHOLE & CEMENT

MEASUREMENT TYPE	PARAMETER	VALUE	UNITS	INTERVAL (m)	
CASING - BOREHOLE & CEMENT VOLUME	CASING O.D.	244.475	mm	TOP	BOTTOM
	CASING THICKNESS	0.000	mm	"	"
BIT SIZE	BIT SIZE	311.150	mm	"	"
BOREHOLE CORR DIAMETER SOURCE	CALIPER/FIXED DIA. (cnbh*)	USE CALIPER		"	"
BOREHOLE CORR DIAMETER	FIXED DIAMETER (cnbh*)	311.150	mm	"	"

### CN PROCESSING

MEASUREMENT TYPE	PARAMETER	VALUE	UNITS	INTERVAL (m)	
2446 CN MATRIX	2446 MATRIX	LIMESTONE		TOP	BOTTOM
CN SALINITY CORRECTION	SALINITY	55384	ppm	"	"
CN CASING & CEMENT CORRECTION	CORRECTION	OFF		"	"
	BIT SIZE BEHIND CSNG	200.025	mm	"	"

### ZDL PROCESSING

MEASUREMENT TYPE	PARAMETER	VALUE	UNITS	INTERVAL (m)	
ZDL CHI-SMOOTH FILTER	DEN CHISM	OFF		TOP	BOTTOM
	PE CHISM	OFF		"	"
ZDL	ZDL TRACKING	ON		"	"

### CURVE DESCRIPTION REPORT

CURVE NAME	CURVE ALIAS	CREATION DATE	CURVE DESCRIPTION
F1:CAL	CAL	May 19 13:30:38 2005	CALIPER
F1:CHT	CHT	May 19 13:30:38 2005	CABLE HEAD TENSION
F1:CNC	CNC	May 19 13:30:38 2005	BOREHOLE SIZE CORRECTED COMPENSATED NEUTRON POROSITY
F1:GR	GR	May 19 13:30:38 2005	GAMMA RAY
F1:PE	PE	May 19 13:30:38 2005	PHOTO ELECTRIC CROSS-SECTION
F1:TEN	TEN	May 19 13:30:38 2005	TOTAL TENSION
F1:ZCOR	ZCOR	May 19 13:30:38 2005	DENSITY CORRECTION
F1:ZDEN	ZDEN	May 19 13:30:38 2005	FORMATION BULK DENSITY

### CURVE MEASURE POINT OFFSET

CURVE	OFFSET (m)	CURVE	OFFSET (m)	CURVE	OFFSET (m)	CURVE	OFFSET (m)
CAL	8.38	CNC	13.79	PE	8.38	ZCOR	8.38
CHT	0.00	GR	15.85	TEN	0.00	ZDEN	8.38

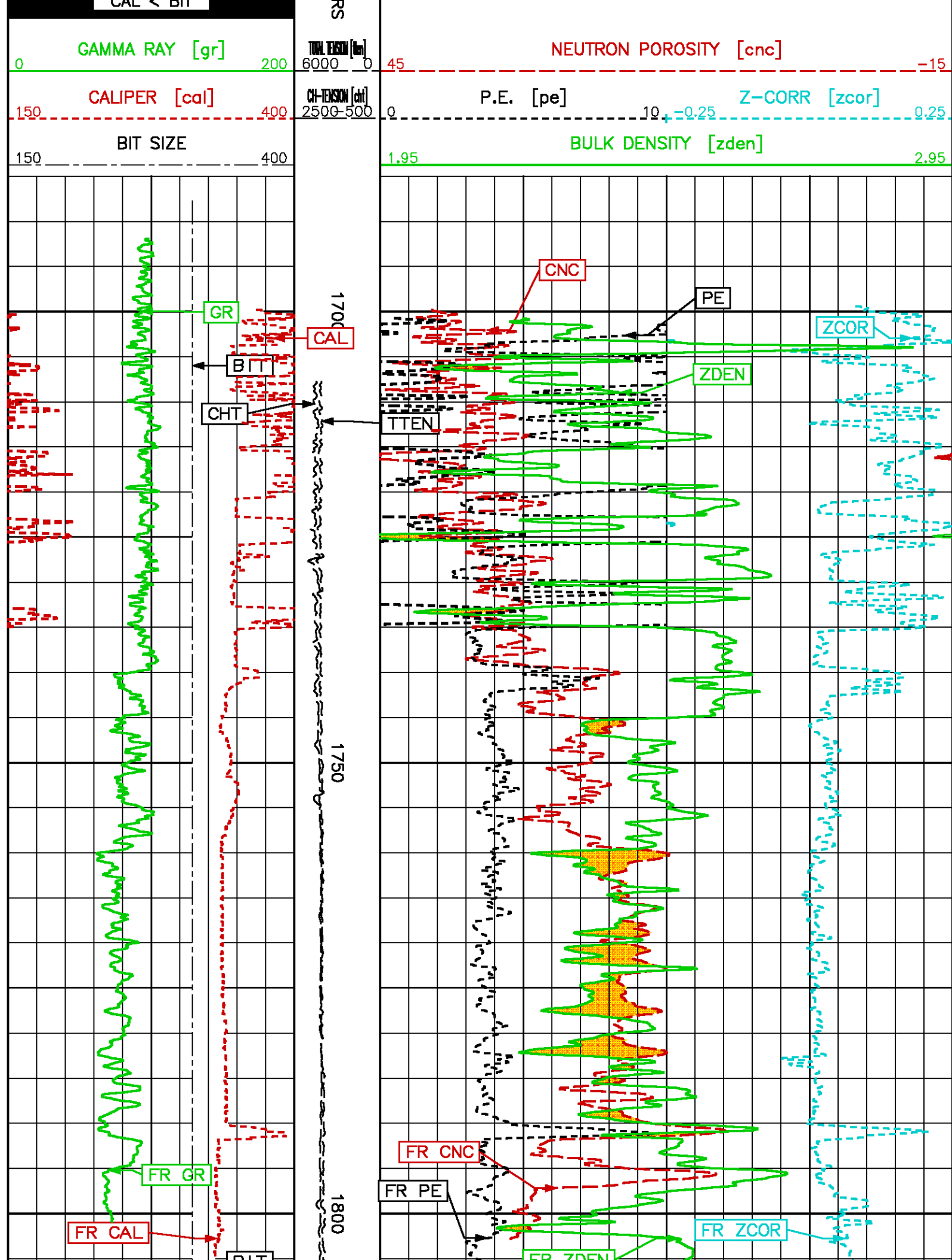
Presentation : sys1:/dat1a/casino4/sulte1/ZDLCNMAIN500.pdf [1:500 Scale]  
 Plot Interval : 1687.75 - 1817.22 Meters

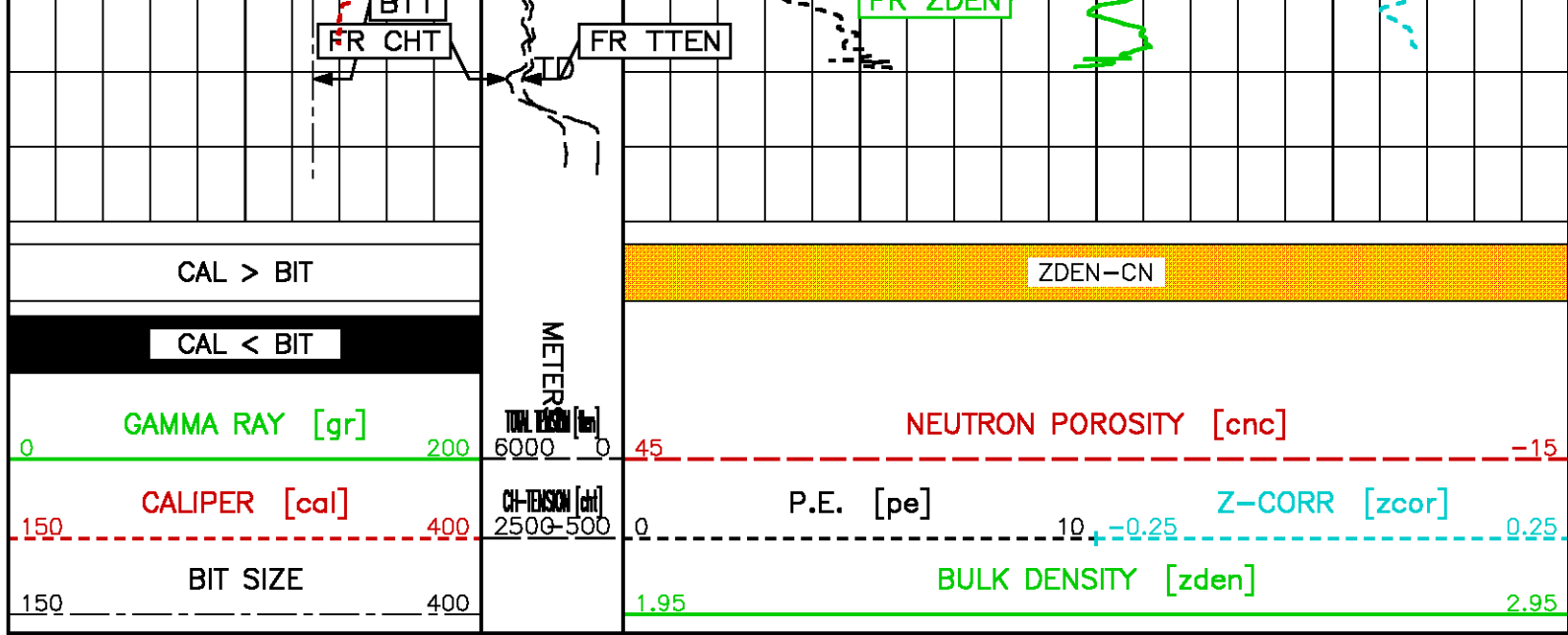
Data File 1 : F1 : sys1:/dat1a/casino4/sulte1/ZDLCNDSL.xtf  
 Created On : May 19 13:30:38 2005  
 Company : SANTOS & PARTNERS  
 Well : CASINO-4  
 Field : CASINO  
 File Interval : 1687.75 - 1817.22 Meters  
 Oct : I850b



CAL > BIT

METER

ZDEN-CN





 <b>Baker Atlas</b> 	<b>COMPANY</b> <u>SANTOS &amp; PARTNERS</u> <b>WELL</b> <u>CASINO-4</u> <b>FIELD</b> <u>CASINO</u> <b>RIG NAME</b> <u>OCEAN PATRIOT</u> <b>COUNTRY</b> <u>AUSTRALIA</u>	<b>FILE NO:</b> _____ <b>API NO:</b> _____ <b>VIC P-44</b> _____
	<b>LOCATION:</b> LAT: 38 DEG 47' 13.03" SOUTH LONG: 142 DEG 41' 54.49" EAST EASTING: 647.518.19M E NORTHING: 5.705.495.28M N	<b>ELEVATIONS:</b> KB — DF 22 M GL -70.8 M DATE 19-MAY-2005