



Baker Atlas

FILE NO: _____ COMPANY: **SANTOS & PARTNERS**
 WELL: **CASINO-4**
 API NO: _____ FIELD: **CASINO**
 VIC P-44 _____ RIG NAME: **OCEAN PATRIOT** COUNTRY: **AUSTRALIA**

Ver. 3.87 LOCATION: LAT: 38 DEG 47' 13.03" SOUTH
 LONG: 142 DEG 41' 54.49" EAST
 EASTING: 647.518.19M E
 NORTHING: 5.705.495.28M N
 OTHER SERVICES: DLL/MLL/GR
 MREX/GR

PERMANENT DATUM LOG MEASURED FROM _____ LAT _____ ELEVATION 0 M
 DRILL MEAS. FROM RT _____ RT _____ ABOVE P.D.
 ELEVATIONS: KB -
 DF 22 M
 GL -70.8 M

DATE	19-MAY-2005	TRIP	1
SERVICE ORDER	516574		
DEPTH DRILLER	1825 M		
DEPTH LOGGER	1810.5 M (HUD)		
BOTTOM LOGGED INTERVAL	1802 M		
TOP LOGGED INTERVAL	1700 M		
CASING DRILLER	340 MM		727.87 M
CASING LOGGER	729 M		
BIT SIZE	311 MM		
TYPE OF FLUID IN HOLE	KCL / IDCAP D		
DENSITY	1.3 G/C3		64 S
PH	9		3.4 C3
SOURCE OF SAMPLE	FLOWLINE		
RM AT MEAS. TEMP.	0.104 OHMM		18.17 DEGC
RMF AT MEAS. TEMP.	0.085 OHMM		17.88 DEGC
RMC AT MEAS. TEMP.	0.301 OHMM		18.54 DEGC
SOURCE OF RMF	MEASURED		MEASURED
RM AT BHT	0.045 OHMM		69.4 DEGC
TIME SINCE CIRCULATION	9 HRS		
MAX. RECORDED TEMP.	69.4 DEGC		
EQUIP. NO.	8677		PERTH
RECORDED BY	S. ARELLANO / M. REYES		
WITNESSED BY	SUBRAMANIAN / GIULIANO		

IN MAKING INTERPRETATIONS OF LOGS OUR EMPLOYEES WILL GIVE CUSTOMER THE BENEFIT OF THEIR BEST JUDGEMENT. BUT SINCE ALL INTERPRETATIONS ARE OPINIONS BASED ON INFERENCES FROM ELECTRICAL OR OTHER MEASUREMENTS, WE CANNOT, AND WE DO NOT GUARANTEE THE ACCURACY OR CORRECTNESS OF ANY INTERPRETATION. WE SHALL NOT BE LIABLE OR RESPONSIBLE FOR ANY LOSS, COST, DAMAGES, OR EXPENSES WHATSOEVER INCURRED OR SUSTAINED BY THE CUSTOMER RESULTING FROM ANY INTERPRETATION MADE BY ANY OF OUR EMPLOYEES.

BOREHOLE RECORD		
BIT SIZE	FROM	TO
914 MM	SEABED	137.4 M
445 MM	137.4 M	742 M
311 MM	742 M	1825 M

CASING RECORD				
SIZE	WEIGHT	GRADE	FROM	TO
762 MM	N/A	X56	SEABED	137.4 M
340 MM	107 KG/M	L80	SEABED	727.87 M

REMARKS

RUN 2 TRIP 1: *

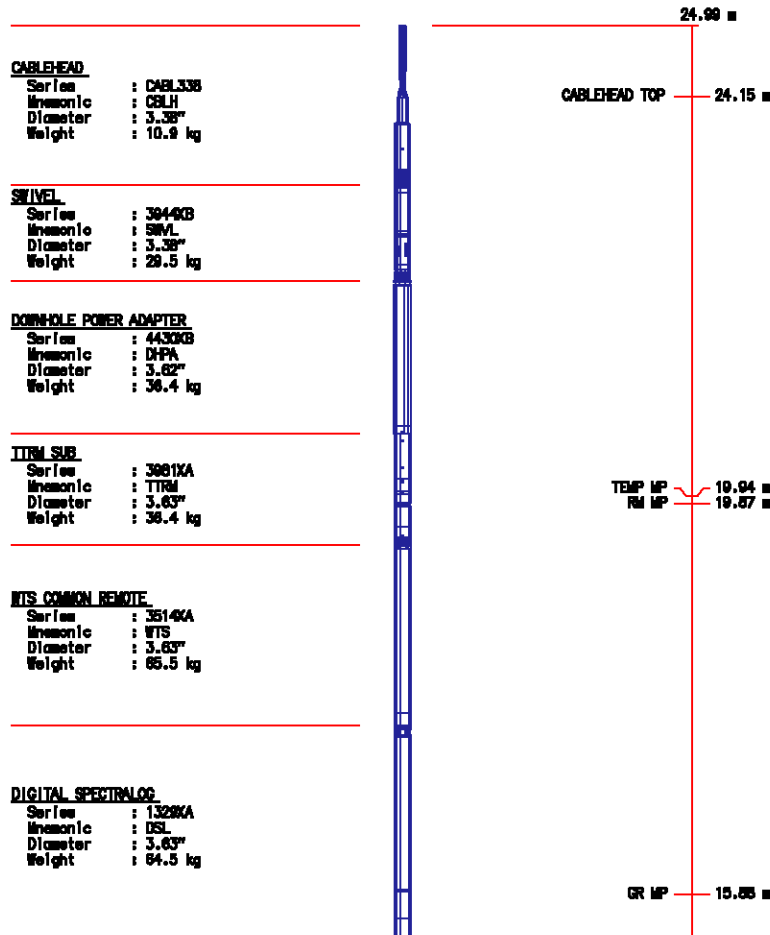
- LOG CORRELATED TO DLL/MLL/GR BY BAKER ATLAS DATED 18-05-2005
- TOOL ZEROED @ 12:15 ON 19-05-2005 WITH A TIDAL CORRECTION OF -0.4 MTS
- CIRCULATION STOPPED AT 04:30 ON 19-MAY-2005
- HUNG UP DEPTH (HUD) LOGGED @ 1810.5 M
- CASING LOGGED @ 729 M.
- ADDITIONAL MUD PROPERTIES:
 PV/YP: 24 / 31
 SALINITY: 40000 MG/L ==> 55384 PPM
 BARITE: % ; KCL: 6%
 SOLIDS: 13%; OIL: 0%; WATER: 87%.
- MAX DEVIATION = 4.65 DEG @ 1301 M (PROVIDED BY CUSTOMER)
- MAX MUM TEMPERATURE RECORDED: 69.4 DEGC

- *. ZDL/CN/DSL/MREX RUN IN COMBINATION
- *. REPEAT SECTION NOT LOGGED BY CUSTOMER'S REQUEST.
- *. ALL SCALES & PRESENTATIONS SET IN ACCORDANCE TO THE LOGGING PROGRAM, AND CUSTOMER REQUIREMENTS BOOK
- *. GR RECORDED WITH BOTH LIGHT AND NO FILTER
- *. CALIPER RECORDED WITH NO FILTER
- *. ZDL/CN RUN DECENTRALISED. BOWSPRING DECENTRALIZER USED
- *. ZDEN & PE RECORDED WITH CHISM FILTER OFF
- *. NEUTRON RUN IN LIMESTONE MATRIX
- *. ZDL PRESENTED WITH LIMESTONE SCALES
- *. PRESENTED NEUTRON POROSITY, CNC, CORRECTED FOR BOREHOLE SIZE AND SALINITY USING THE DENSITY CALIPER, AND A SALINITY OF 40000 MG/ => 55384 PPM

EQUIPMENT DATA

RUN	TRIP	TOOL	SERIES NO.	SERIAL NO.	POSITION
2	1	SWIVEL	3944XB	10127260	FREE
2	1	PWR ADAPT	4430XB	190443	FREE
2	1	TTRM	3981XA	10045152	FREE
2	1	COMM REMOTE	3514XB	178699	FREE
2	1	GR/DSL	1329XB	184113	FREE
2	1	CN	2446XA	153093	DECENTRALISED
2	1	ZDL	2228EA/2228MA	185478/188262	PAD DEVICE
2	1	MREX	3218QB	10076158	DECENTRALISED
2	1	MREX	3218EA/3218MA	403512/10074197	DECENTRALISED

INSTRUMENT CONFIGURATION



COMPENSATED NEUTRON
 Series : 2448KA
 Insonic : CN
 Diameter : 3.63"
 Weight : 66.2 kg

LSN MP 13.88 m
 SSN MP 13.77 m

Z-DENS LOG
 Series : 2228KA
 Insonic : ZDL
 Diameter : 4.88"
 Weight : 213.6 kg

SSD MP 8.51 m
 CAL / ZSPEC MP 8.41 m

MREX CAPACITOR CHARGER SUB
 Series : 3218PA
 Insonic : MREX
 Diameter : 3.62"
 Weight : 80.0 kg

MREX ELECTRONICS
 Series : 3218EA
 Insonic : MREX
 Diameter : 5.00"
 Weight : 80.9 kg

MREX MAGNET
 Series : 3218MA
 Insonic : MREX
 Diameter : 5.00"
 Weight : 140.9 kg

ANTENNA 1.50 m

BULL FLUG 3 1/8

0.00 m

TOTAL LENGTH: 25.05 m
 TOTAL WEIGHT: 841.4 kg
 MAX DIAMETER: 0'5.00"

MAIN LOG SCALE 1:200

ECLIPS 5.0 Nov 26, 2003
 Updates: 1,2,3,32

Perplt /main/59

Cplot 7.09
 Pdf_Cpp /main/16

Thu May 19 18:35:31 2005
 Fileview 4.67

PARAMETER AND FILTER SUMMARY REPORT

FILE: /data/casino4/suite1/1850b03.prm
 LOGGING MODE: DEPTH DIRECTION: UP
 TOP DEPTH: 1706.245 m BOTTOM DEPTH: 1816.141 m

SYMMETRIC FILTER

MEASUREMENT TYPE	PARAMETER	VALUE	UNITS	INTERVAL (m)	
CHT	FILTER ()	medium (1)		TOP	BOTTOM
SPEED	FILTER ()	medium (1)		"	"
TENSION	FILTER ()	medium (1)		"	"
GR	FILTER ()	light (2)		"	"
CN	FILTER ()	medium (1)		"	"
X AXIS CALIPER	FILTER ()	no filter (0)		"	"
	FILTER (.h)	no filter (0)		"	"
	FILTER (.l)	no filter (0)		"	"
ZDL	FILTER ()	medium (1)		"	"

BOREHOLE & CEMENT

MEASUREMENT TYPE	PARAMETER	VALUE	UNITS	INTERVAL (m)	
CASING - BOREHOLE & CEMENT VOLUME	CASING O.D.	244.475	mm	TOP	BOTTOM
	CASING THICKNESS	0.000	mm	"	"
BIT SIZE	BIT SIZE	311.150	mm	"	"
BOREHOLE CORR DIAMETER SOURCE	CALIPER/FIXED DIA. (cnbh*)	USE CALIPER		"	"
BOREHOLE CORR DIAMETER	FIXED DIAMETER (cnbh*)	311.150	mm	"	"

CN PROCESSING

MEASUREMENT TYPE	PARAMETER	VALUE	UNITS	INTERVAL (m)	
2446 CN MATRIX	2446 MATRIX	LIMESTONE		TOP	BOTTOM
CN SALINITY CORRECTION	SALINITY	55384	ppm	"	"
CN CASING & CEMENT CORRECTION	CORRECTION	OFF		"	"
	BIT SIZE BEHIND CSNG	200.025	mm	"	"

ZDL PROCESSING

MEASUREMENT TYPE	PARAMETER	VALUE	UNITS	INTERVAL (m)	
ZDL CHI-SMOOTH FILTER	DEN CHISM	OFF		TOP	BOTTOM
	PE CHISM	OFF		"	"
ZDL	ZDL TRACKING	ON		"	"

CURVE DESCRIPTION REPORT

CURVE NAME	CURVE ALIAS	CREATION DATE	CURVE DESCRIPTION
F1:CAL	CAL	May 19 13:30:38 2005	CALIPER
F1:CHT	CHT	May 19 13:30:38 2005	CABLE HEAD TENSION
F1:CNC	CNC	May 19 13:30:38 2005	BOREHOLE SIZE CORRECTED COMPENSATED NEUTRON POROSITY
F1:GR	GR	May 19 13:30:38 2005	GAMMA RAY
F1:PE	PE	May 19 13:30:38 2005	PHOTO ELECTRIC CROSS-SECTION
F1:TEN	TEN	May 19 13:30:38 2005	TOTAL TENSION
F1:ZCOR	ZCOR	May 19 13:30:38 2005	DENSITY CORRECTION
F1:ZDEN	ZDEN	May 19 13:30:38 2005	FORMATION BULK DENSITY

CURVE MEASURE POINT OFFSET

CURVE	OFFSET (m)	CURVE	OFFSET (m)	CURVE	OFFSET (m)	CURVE	OFFSET (m)
CAL	8.38	CNC	13.79	PE	8.38	ZCOR	8.38
CHT	0.00	GR	15.85	TEN	0.00	ZDEN	8.38

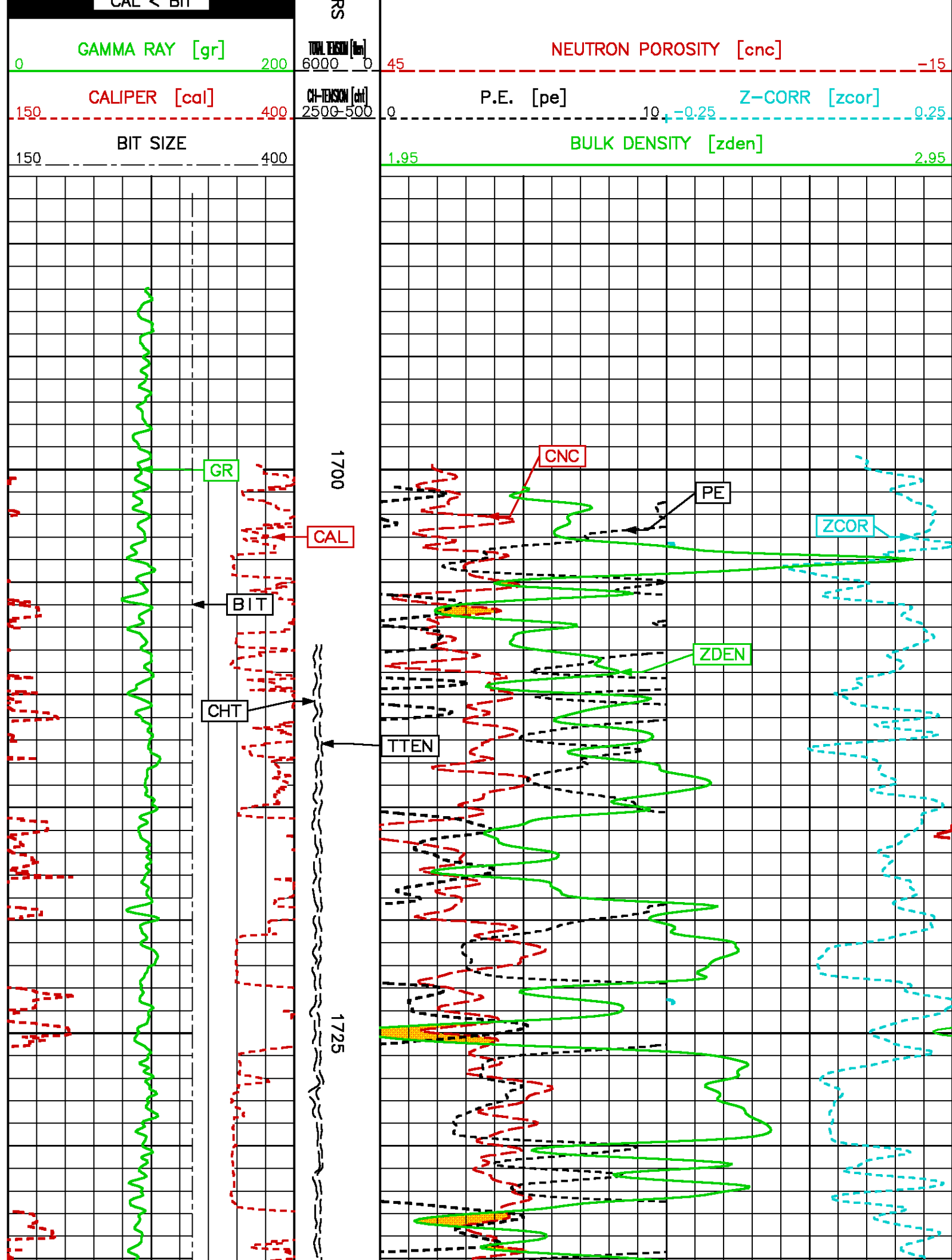
Presentation : sys1:/dat1a/casino4/sulte1/ZDLCNMAIN200.pdf [1:200 Scale]
 Plot Interval : 1687.75 - 1817.22 Meters

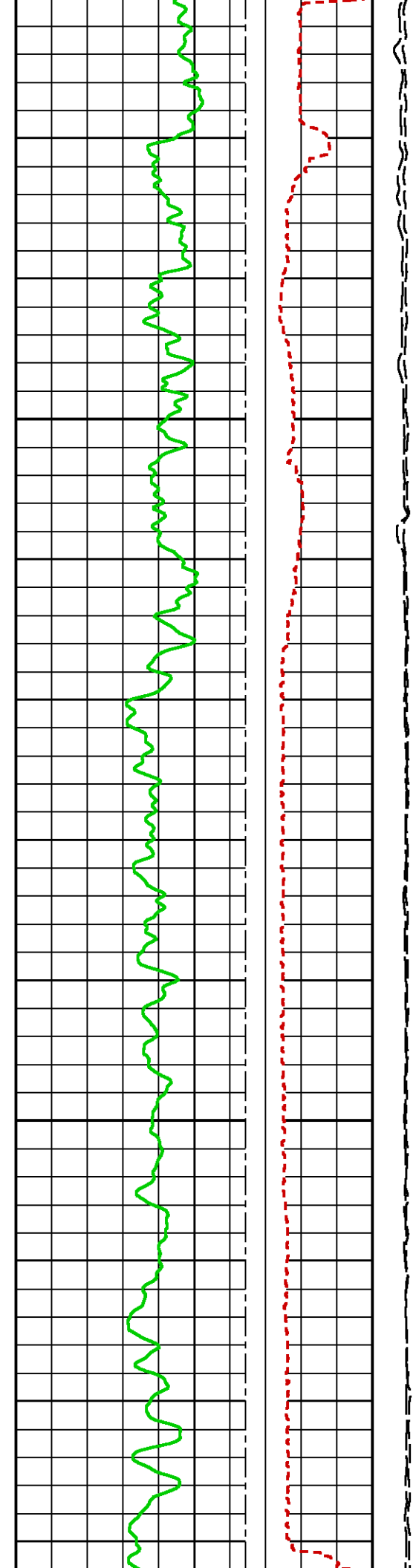
Data File 1 : F1 : sys1:/dat1a/casino4/sulte1/ZDLCNDSL.xtf
 Created On : May 19 13:30:38 2005
 Company : SANTOS & PARTNERS
 Well : CASINO-4
 Field : CASINO
 File Interval : 1687.75 - 1817.22 Meters
 Oct : 1850b

CAL > BIT

METER

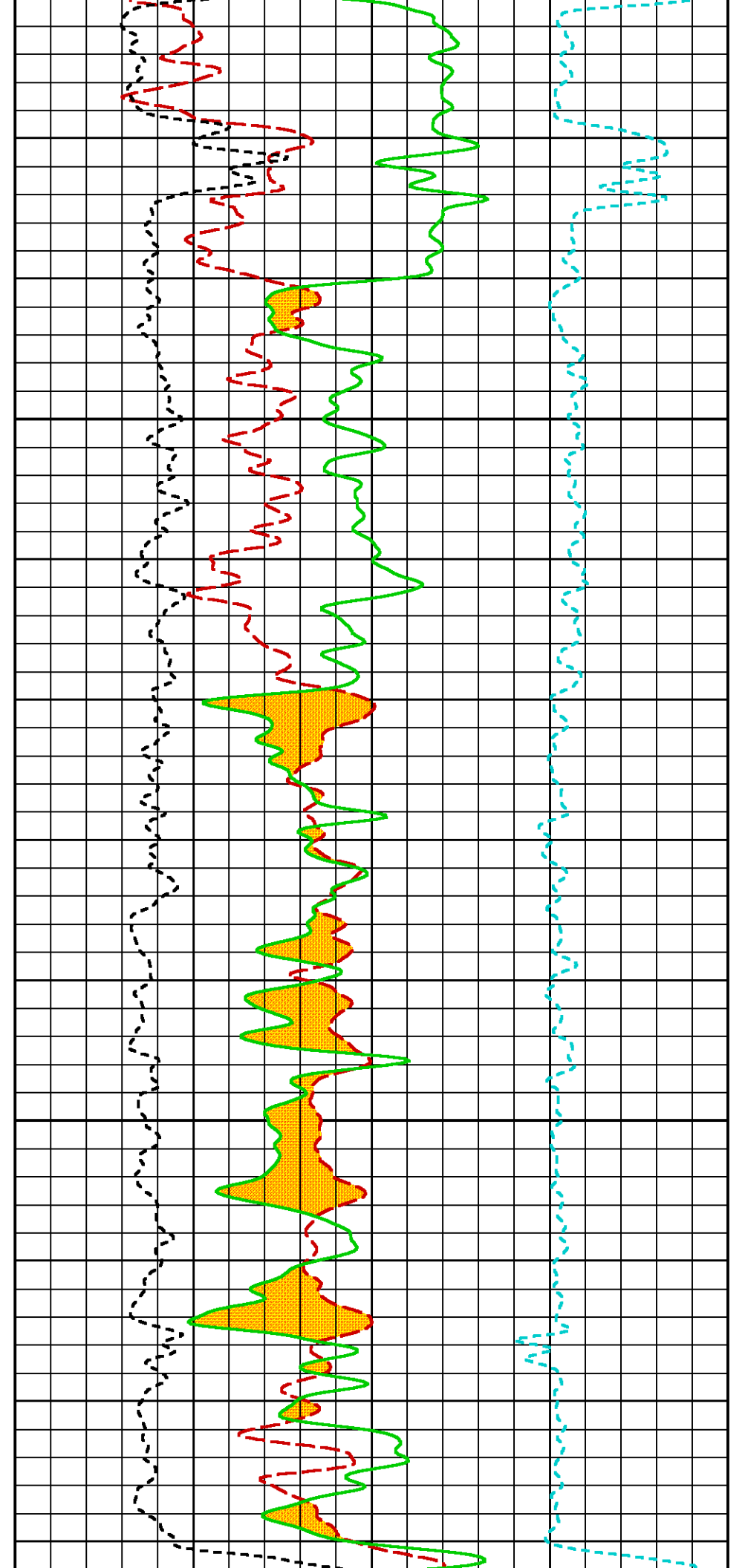
ZDEN-CN

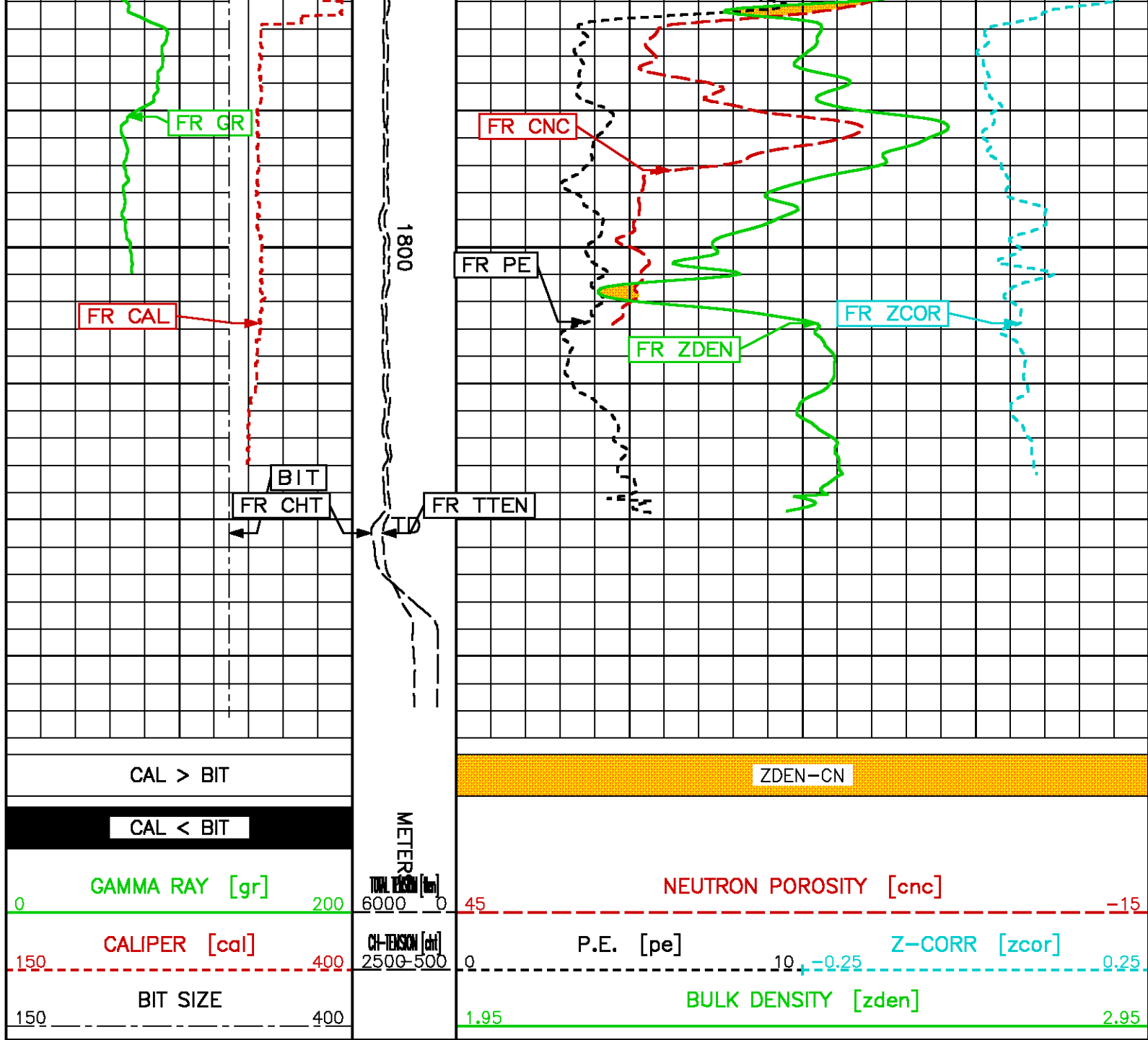




1750

1775





CALIBRATION / VERIFICATION SUMMARY

GR PRIMARY CALIBRATION SUMMARY

TOOL #: 1329XA 184113

DATE/TIME PERFORMED: Sat May 14 13:10:02 2005

UNIT #: 3854SA 008677

CALB JIG #: 4702NK S2K-WA671

BACKGROUND CALBRTR ON CR DIFF MULT BACKGROUND CALBRTR ON CALBRTR

	(cts/s)	(cts/s)	(cts/s)		(gAPI)	(gAPI)	(gAPI)
GR	494.47	1410.51	916.0	0.164	80.97	230.97	150
			870.0 960.0				

GR PRIMARY VERIFICATION SUMMARY

TOOL #: 1329XA 184113 DATE/TIME PERFORMED: Sat May 14 13:12:10 2005

UNIT #: 3854SA 008677 VERI JIG #: 4702NK S2K-WA671

	BACKGROUND CALBRTR ON (cts/s)	MULT	BACKGROUND CALBRTR ON (gAPI)	DIFF. (gAPI)
GR	512.62	0.164	83.94	148.31
				140.00 160.00

GR BEFORE LOG VERIFICATION SUMMARY

TOOL #: 1329XA 184113 DATE/TIME PERFORMED: Sat May 14 13:14:50 2005

UNIT #: 3854SA 008677 VERI JIG #: 4702NK S2K-WA671

	BACKGROUND CALBRTR ON (cts/s)	MULT	BACKGROUND CALBRTR ON (gAPI)	DIFF. (gAPI)
GR	514.00	0.164	84.17	147.90
				138.31 158.31

GR AFTER LOG VERIFICATION SUMMARY

TOOL #: 1329XA 184113 DATE/TIME PERFORMED: Thu May 19 16:47:01 2005

UNIT #: 3854SA 008677 VERI JIG #: 4702NK S2K-WA671

	BACKGROUND CALBRTR ON (cts/s)	MULT	BACKGROUND CALBRTR ON (gAPI)	DIFF. (gAPI)
GR	372.80	0.164	61.05	141.21
				137.90 157.90

CN PRIMARY CALIBRATION SUMMARY

TOOL #: 2446XA 153093 DATE/TIME PERFORMED: Sun May 15 09:27:45 2005

UNIT #: 3854SA 008677 CALIBRATOR #: 2437XB 185995 SOURCE #: 4717XS N--773

	MEASURED CPS	DEADTM CORR CPS	DTC SSN/LSN	NOMINAL SSN/LSN	CORRECTION FACTOR	POROSITY (pu)
LSN	723.39	736.18				
SSN	1938.59	2016.78				

RATIO

2.73954

2.75100

1.00418

0.97000 1.07000

CN

21.358

CN PRIMARY VERIFICATION SUMMARY

TOOL #: 2446XA 153093

DATE/TIME PERFORMED: Sun May 15 09:38:06 2005

UNIT #: 3854SA 008677

ICE BLOCK #: 4717ND D--380

	MEASURED CPS	DEADTM CORR CPS	DTC SSN/LSN	CORRECTION FACTOR	DTC CORR SSN/LSN	POROSITY (pu)
LSN	1921.57	2014.53				
SSN	4693.24	5179.52				
RATIO			2.57108	1.00418	2.58324	
CN						18.996

CN BEFORE LOG VERIFICATION SUMMARY

TOOL #: 2446XA 153093

DATE/TIME PERFORMED: Sun May 15 09:40:03 2005

UNIT #: 3854SA 008677

ICE BLOCK #: 4717ND D--380

	MEASURED CPS	DEADTM CORR CPS	DTC SSN/LSN	CORRECTION FACTOR	DTC CORR SSN/LSN	POROSITY (pu)
LSN	1923.84	2017.02				
SSN	4690.99	5176.73				
RATIO			2.56652	1.00418	2.57884	
CN						18.936 16.996 20.996

CN AFTER LOG VERIFICATION SUMMARY

TOOL #: 2446XA 153093

DATE/TIME PERFORMED: Thu May 19 16:42:13 2005

UNIT #: 3854SA 008677

ICE BLOCK #: 4717ND D--380

	MEASURED CPS	DEADTM CORR CPS	DTC SSN/LSN	CORRECTION FACTOR	DTC CORR SSN/LSN	POROSITY (pu)
LSN	1918.34	2010.98				
SSN	4707.64	5197.06				

RATIO

2.58174

1.00418

2.58324

RATIO

2.38434

1.00418

2.39663

CN

19.182

16.936 20.936

CAL PRIMARY CALIBRATION SUMMARY

TOOL #: 2228MA 188262

DATE/TIME PERFORMED: Sat May 14 14:10:08 2005

UNIT #: 3854SA 008677

	SMALL RING (raw)	LARGE RING (raw)	MULT	ADD	SMALL RING (mm)	LARGE RING (mm)
CALIPER	1696.5	2395.5	0.14989	-54.26798	200.025	304.800

CAL BEFORE LOG VERIFICATION SUMMARY

TOOL #: 2228MA 188262

DATE/TIME PERFORMED: Thu May 19 12:47:12 2005

UNIT #: 3854SA 008677

	I.D. (raw)	MULT	ADD	I.D. (mm)
CALIPER	2316.7	0.14989	-33.25645	314.000

CAL AFTER LOG VERIFICATION SUMMARY

TOOL #: 2228MA 188262

DATE/TIME PERFORMED: Thu May 19 15:59:08 2005

UNIT #: 3854SA 008677

	I.D. (raw)	MULT	ADD	I.D. (mm)
CALIPER	2295.7	0.14989	-33.25645	310.852
				301.300 326.700

ZDL PRIMARY CALIBRATION SUMMARY

TOOL #: 2228MA 188262

DATE/TIME PERFORMED: Sun May 15 08:01:07 2005

UNIT #: 3854SA 008677

CALB. BLOCK SET: 2225XA 112395

CS SOURCE #: 4703NT 2063GW

	SSD-NDTC (cts/s)	HRD1-NDTC (cts/s)	HRD2-NDTC (cts/s)	SHR	DEN (g/cm ³)	CORR (g/cm ³)	PE (b/e)
MG BLOCK (LO PE)	11565.6	4905.9	5956.8	0.692	1.690	0.008	2.195

AL BLOCK	5658.2	494.5	629.1	0.625	0.725	2.697	-0.014
AL+SHIM (CORR)	7938.1	864.2	1075.3			2.609	0.166
MG+SHIM (HI PE)		2391.3	3065.7	0.281			10.151
				0.260	0.310		
RATIO MG/AL	2.04	9.92	9.47				
	1.97	2.07	8.80	10.40	8.75	9.75	

BACKGROUND (cts/s)	CS PEAK CHANNEL #	AM PEAK CHANNEL #
993.1	229.5	23.0
	225.0 235.0	21.0 25.0

ZDL PRIMARY VERIFICATION SUMMARY

TOOL #: 2228MA 188262 DATE/TIME PERFORMED: Sun May 15 08:09:45 2005

UNIT #: 3854SA 008677 VERI. JIG #: 4704NA 609-644

	SSD-NDTC (cts/s)	HRD1-NDTC (cts/s)	HRD2-NDTC (cts/s)	SHR	DEN (g/cm ³)	CORR (g/cm ³)	PE (b/e)
FIELD BLOCK	8797.8	1949.5	4603.9	0.188	1.832	-0.094	15.095

ZDL BEFORE LOG VERIFICATION SUMMARY

TOOL #: 2228MA 188262 DATE/TIME PERFORMED: Sun May 15 08:12:07 2005

UNIT #: 3854SA 008677 VERI. JIG #: 4704NA 609-644

	SSD-NDTC (cts/s)	HRD1-NDTC (cts/s)	HRD2-NDTC (cts/s)	SHR	DEN (g/cm ³)	CORR (g/cm ³)	PE (b/e)
FIELD BLOCK	8813.6	1942.3	4604.4	0.188	1.835	-0.092	15.104
				0.168 0.208	1.807 1.857	-0.119 -0.069	

ZDL AFTER LOG VERIFICATION SUMMARY

TOOL #: 2228MA 188262 DATE/TIME PERFORMED: Thu May 19 16:37:09 2005

UNIT #: 3854SA 008677 VERI. JIG #: 4704NA 609-644

	SSD-NDTC (cts/s)	HRD1-NDTC (cts/s)	HRD2-NDTC (cts/s)	SHR	DEN (g/cm ³)	CORR (g/cm ³)	PE (b/e)
FIELD BLOCK	8894.7	1951.7	4640.1	0.186	1.838	-0.086	15.233
				0.168 0.208	1.810 1.860	-0.117 -0.067	





COMPANY SANTUS & PARTNERS
WELL CASINO-4
FIELD CASINO
RIG NAME OCEAN PATRIOT COUNTRY AUSTRALIA

FILE NO: _____
API NO: _____
VIC P-44 _____

Baker Atlas



LOCATION:
LAT: 38 DEG 47' 13.03" SOUTH
LONG: 142 DEG 41' 54.49" EAST
EASTING: 647.518.19M E
NORTHING: 5.705.495.28M N

ELEVATIONS:
KB —
DF 22 M
GL -70.8 M

SCALE 1:200

DATE 19-MAY-2005