



Baker Atlas

FILE NO: _____ COMPANY: **SANTOS & PARTNERS**
 WELL: **CASINO-4**
 API NO: _____ FIELD: **CASINO**
 VIC P-44 _____ RIG NAME: **OCEAN PATRIOT** COUNTRY: **AUSTRALIA**

Ver. 3.87 LOCATION: **LAT: 38 DEG 47' 13.03" SOUTH**
LONG: 142 DEG 41' 54.49" EAST
EASTING: 647,518.19M E
NORTHING: 5,705,495.28M N

OTHER SERVICES
 - ZDI/CN/DSL/GR
 - MREX/GR

PERMANENT DATUM LOG MEASURED FROM _____ LAT _____ ELEVATION **0 M**
 DRILL MEAS. FROM _____ RT _____ ABOVE P.D.
 ELEVATIONS:
 KB _____
 DF **22 M**
 GL **-70.8 M**

DATE	18-MAY-2005	TRIP	1
SERVICE ORDER	516574		
DEPTH DRILLER	1794 M		
DEPTH LOGGER	1782.5 M (HUD)		
BOTTOM LOGGED INTERVAL	1781.5 M		
TOP LOGGED INTERVAL	1685 M		
CASING DRILLER	340 MM		⑦
CASING LOGGER	729 M		
BIT SIZE	311 MM		
TYPE OF FLUID IN HOLE	KCL / IDCAP D		
DENSITY	1.29 G/CC	55 S	
PH	8	3.6 C3	
SOURCE OF SAMPLE	FLOWLINE		
RM AT MEAS. TEMP.	0.102 OHMM	⑩ 19.95 DEGC	⑩
RMF AT MEAS. TEMP.	0.082 OHMM	⑩ 19.80 DEGC	⑩
RMC AT MEAS. TEMP.	0.198 OHMM	⑩ 20.10 DEGC	⑩
SOURCE OF RMF	RMC	MEASURED	
RM AT BHT	0.047 OHMM	⑩ 88.33 DEGC	⑩
TIME SINCE CIRCULATION	19 HOURS		
MAX. RECORDED TEMP.	68.33 DEGC		
EQUIP. NO.	8677	PERTH	
RECORDED BY	S. ARELLANO / M. REYES		
WITNESSED BY	R. SUBRAMANIAN		

IN MAKING INTERPRETATIONS OF LOGS OUR EMPLOYEES WILL GIVE CUSTOMER THE BENEFIT OF THEIR BEST JUDGEMENT. BUT SINCE ALL INTERPRETATIONS ARE OPINIONS BASED ON INFERENCES FROM ELECTRICAL OR OTHER MEASUREMENTS, WE CANNOT, AND WE DO NOT GUARANTEE THE ACCURACY OR CORRECTNESS OF ANY INTERPRETATION. WE SHALL NOT BE LIABLE OR RESPONSIBLE FOR ANY LOSS, COST, DAMAGES, OR EXPENSES WHATSOEVER INCURRED OR SUSTAINED BY THE CUSTOMER RESULTING FROM ANY INTERPRETATION MADE BY ANY OF OUR EMPLOYEES.

BOREHOLE RECORD		
BIT SIZE	FROM	TO
914 MM	SEABED	137.4 M
445 MM	137.4 M	742 M
311 MM	742 M	1794 M

CASING RECORD				
SIZE	WEIGHT	GRADE	FROM	TO
762 MM	N/A	X56	SEABED	137.4 M
340 MM	107 KG/M	L80	SEABED	727.87 M

REMARKS

RUN 1 TRIP 1 :

- *. FIRST RUN IN THE HOLE.
- *. TOOL ZEROED @ 08:00 ON 18-05-2005 WITH A TIDAL CORRECTION OF -0.4M.
- *. CIRCULATION STOPPED AT 15:30 ON 17-MAY-2005.
- *. MAX DEPTH REACHED: 1782.5M.
- *. CASING LOGGED @ 729M.
- *. ADDITIONAL MUD PROPERTIES:
 PV/YP: 19 / 31
 SALINITY: 38000 MG/L (52123PPM).
 BARITE: % : KCL: 6%
 SOLIDS: 14% OIL: 0% WATER: 86%.

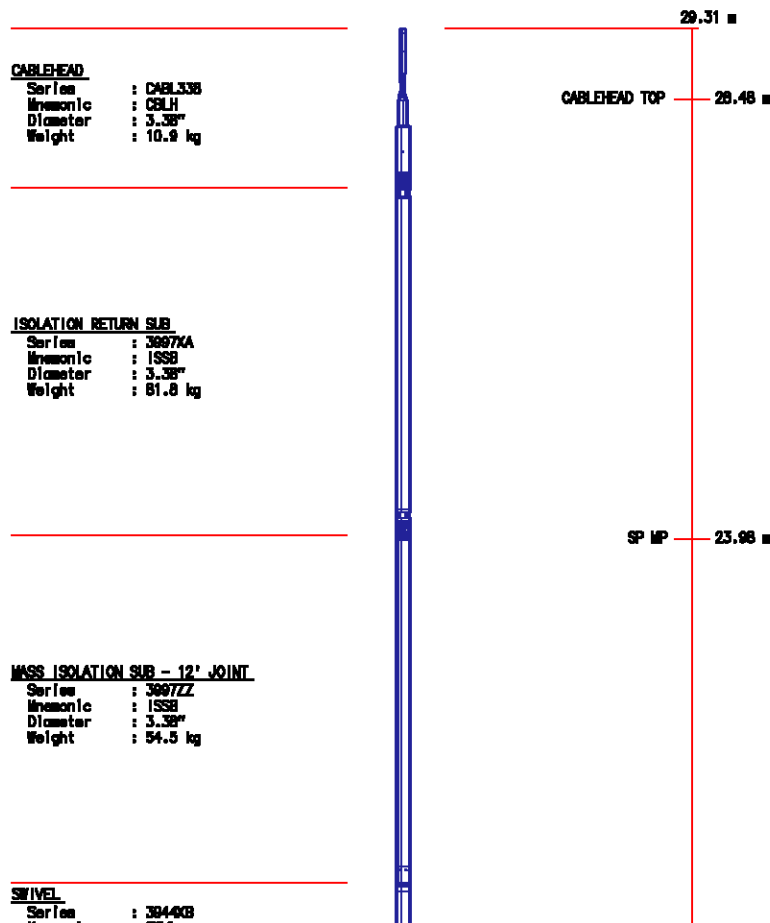
- *. MAX DEVIATION = 4.65 DEG @ 1301 M (PROVIDED BY CUSTOMER)
- *. MAXIMUM TEMPERATURE RECORDED: 68.33 DEGC.
- *. DLL/MLL/GR RUN IN COMBINATION
- *. REPEAT SECTION NOT LOGGED BY CUSTOMER'S REQUEST.
- *. ALL SCALES & PRESENTATIONS SET IN ACCORDANCE TO THE LOGGING PROGRAM, AND CUSTOMER REQUIREMENTS BOOK
- *. DLL/MLL RUN WITH 1.5" STAND-OFF
- *. GR RECORDED WITH BOTH LIGHT AND NO FILTER
- *. CALIPER RECORDED WITH NO FILTER

EQUIPMENT DATA

RUN	TRIP	TOOL	SERIES NO.	SERIAL NO.	POSITION
1	1	ISO SUB	3997XA	188149	FREE
1	1	ISO SUB	3997XA	152431	FREE
1	1	SWIVEL	3944XB	10127260	FREE
1	1	PWR ADAPT	4430XB	190443	FREE
1	1	TIRM	3981XA	10045152	FREE
1	1	COMM REMOTE	3514XB	178699	FREE
1	1	GR/DSL	1329XB	184113	FREE
1	1	SLAM ADAPTR	3516XA	153446	FREE
1	1	ISO SUB	3967XB	152361	FREE
1	1	DLL E	1239EA	154859	FREE
1	1	DLL M	1239MA	177840	1.5 IN STANDOFF
1	1	MLL	1233MA	154386	PAD

INSTRUMENT CONFIGURATION

Source File: /dat1a/casino4/suite1/dll_mll-tdg



Insonic : 38VL
Diameter : 3.38"
Weight : 29.5 kg

DOWNHOLE POWER ADAPTER
Series : 4430KA
Insonic : DHPA
Diameter : 3.62"
Weight : 36.4 kg

TTRM SUB
Series : 3881KA
Insonic : TTRM
Diameter : 3.63"
Weight : 36.4 kg

WTS COMMON REMOTE
Series : 3514KA
Insonic : WTS
Diameter : 3.63"
Weight : 65.5 kg

GAMMA RAY
Series : 1325KA
Insonic : DSL
Diameter : 3.63"
Weight : 64.5 kg

SLAM ADAPTER
Series : 3518KA
Insonic : SLAM
Diameter : 3.38"
Weight : 50.0 kg

ISOLATION RETURN SUB
Series : 3887KB
Insonic : ISSB

DUAL LATERLOG MANDREL
Series : 1238KA
Insonic : DLLS
Diameter : 3.63"
Weight : 124.5 kg

MICROLATERLOG
Series : 1233KA
Insonic : MLL
Diameter : 4.75"
Weight : 154.5 kg

BULL PLUG 3 1/8

TOTAL LENGTH: 29.38 m
TOTAL WEIGHT: 731.8 kg
MAX DIAMETER: 0"4.75"



TEMP MP : 16.95 m
RM MP : 16.85 m

GR MP : 12.90 m

RS/RD MP : 6.50 m

MLL / CAL MP : 1.10 m

0.00 m

MAIN LOG SCALE 1:500

ECLIPS 5.0 Nov 26, 2003
Updates: 1,2,3,32

Perplf /main/59

Cplot 7.09
Pdf_Cpp /main/16

Wed May 18 15:53:32 2005
Fileview 4.67

PARAMETER AND FILTER SUMMARY REPORT

FILE: /data/casino4/suite1/1773w15.prm
LOGGING MODE: DEPTH DIRECTION: UP
TOP DEPTH: 1677.695 m BOTTOM DEPTH: 1784.909 m

SYMMETRIC FILTER

MEASUREMENT TYPE	PARAMETER	VALUE	UNITS	INTERVAL (m)	
CHT	FILTER ()	medium (1)		TOP	BOTTOM
TTRM	FILTER ()	medium (1)		"	"
	FILTER (.h)	medium (1)		"	"
	FILTER (.l)	medium (1)		"	"
SPEED	FILTER ()	medium (1)		"	"
TENSION	FILTER ()	medium (1)		"	"
SPSB	FILTER ()	medium (1)		"	"
GR	FILTER ()	light (2)		"	"
Y AXIS CALIPER	FILTER ()	no filter (0)		"	"
DLL	FILTER ()	medium (1)		"	"
MLL	FILTER ()	light (2)		"	"

BOREHOLE & CEMENT

MEASUREMENT TYPE	PARAMETER	VALUE	UNITS	INTERVAL (m)	
BIT SIZE	BIT SIZE	311.150	mm	TOP	BOTTOM
BOREHOLE CORR DIAMETER SOURCE	CALIPER/FIXED DIA. (dibh*)	USE CALIPER		"	"
BOREHOLE CORR DIAMETER	FIXED DIAMETER (dibh*)	311.150	mm	"	"
MUD VALUES SOURCE	RMUD SOURCE	TOOL MEASURED		"	"
MUD VALUES	MUD SAMPLE TEMP	23.9	degC	"	"
	MUD SAMPLE RES	1.000	ohm.m	"	"
	MUD REFERENCE TEMP	23.9	degC	"	"
	TEMP GRADIENT	2.187	0.01 degC/m	"	"

SP CONTROL

MEASUREMENT TYPE	PARAMETER	VALUE	UNITS	INTERVAL (m)	
SP CONTROL	Tool/Bridle	CH/BRIDLE		TOP	BOTTOM

DLL PROCESSING

MEASUREMENT TYPE	PARAMETER	VALUE	UNITS	INTERVAL (m)	
DLL BOREHOLE CORRECTION	BOREHOLE CORR	ON		TOP	BOTTOM
	DEEP TYPE	STANDARD		"	"
	SHALLOW TYPE	STANDARD		"	"
	TOOL POSITION	ECCENTERED		"	"
	DEEP CURRENT RTN.	STANDARD		"	"
	CONVEYANCE METHOD	WIREFINE		"	"
	GRONINGEN RTN. DIST	40 FT RETURN		"	"

CURVE DESCRIPTION REPORT

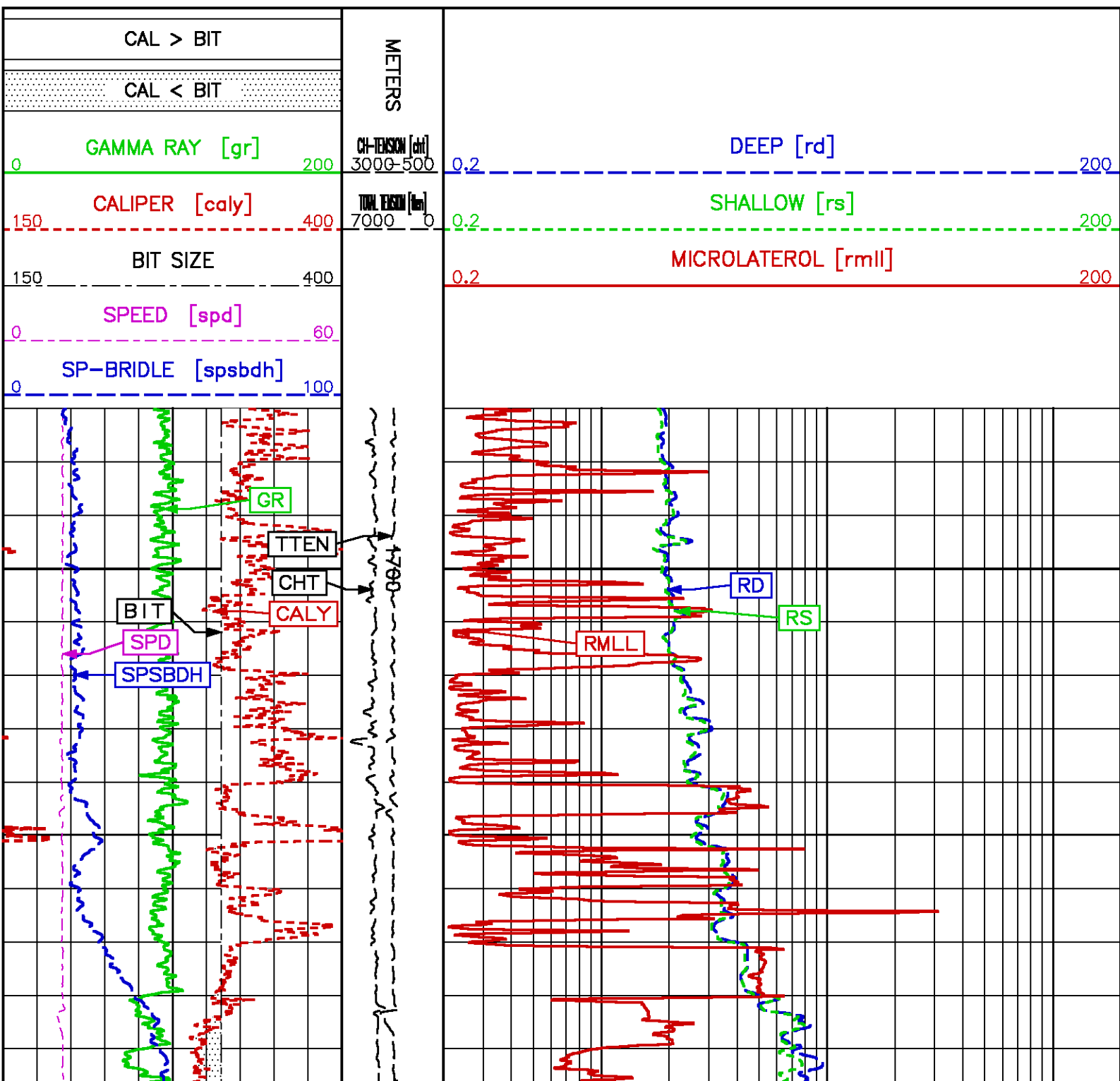
CURVE NAME	CURVE ALIAS	CREATION DATE	CURVE DESCRIPTION
F1:BIT	BIT	May 18 10:30:09 2005	BIT SIZE
F1:CALY	CAL	May 18 10:30:09 2005	CALIPER FROM Y AXIS OF X-Y CALIPER(S)
F1:CHT	CHT	May 18 10:30:09 2005	CABLE HEAD TENSION
F1:GR	GR	May 18 10:30:09 2005	GAMMA RAY
F1:RD	RD	May 18 10:30:09 2005	DEEP RESISTIVITY
F1:RMLL	RMLL	May 18 10:30:09 2005	RESISTIVITY
F1:RS	RS	May 18 10:30:09 2005	SHALLOW RESISTIVITY
F1:SPD	SPD	May 18 10:30:09 2005	SPEED
F1:SPSBDH	SPBR	May 18 10:30:09 2005	ELECTRODE SUB PROCESSED DOWNHOLE

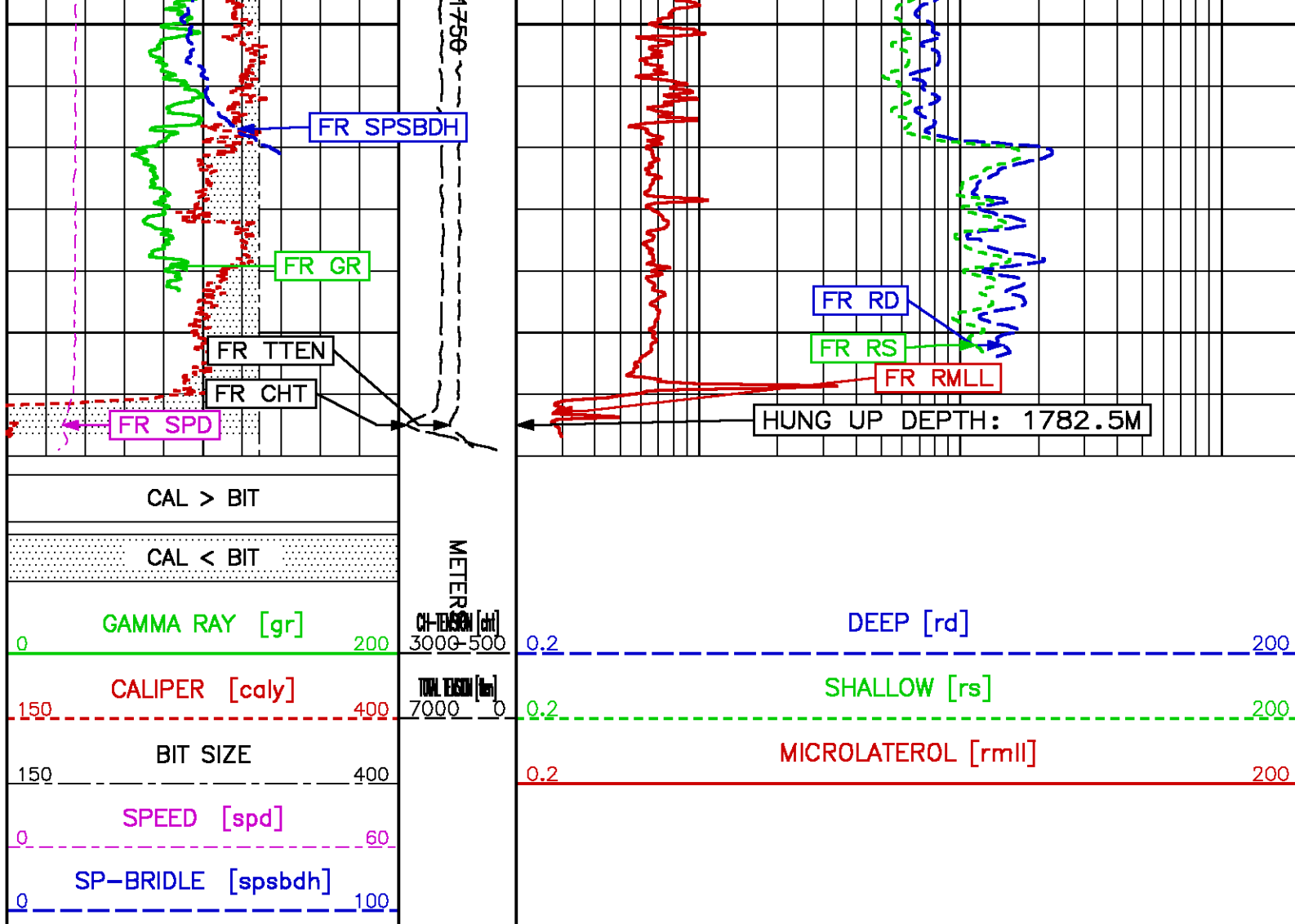
CURVE MEASURE POINT OFFSET



CURVE	OFFSET (m)	CURVE	OFFSET (m)	CURVE	OFFSET (m)	CURVE	OFFSET (m)
BIT	0.00	GR	12.88	RS	6.48	TTEN	0.00
CALY	1.14	RD	6.48	SPD	0.00		
CHT	0.00	RMLL	1.14	SPSBDH	24.00		

Presentation : sys1:/dat1a/casino4/suite1/DLLMLLMAIN500.pdf [1:500 Scale]
 Plot Interval : 1685 - 1784.91 Meters

Data File 1 : F1 : sys1:/dat1a/casino4/suite1/i773w15.xtf
 Created On : May 18 10:30:09 2005
 Company : SANTOS & PARTNERS
 Well : CASINO-4
 Field : CASINO
 File Interval : 1654 - 1784.91 Meters
 Oct : i773w





 Baker Atlas 	COMPANY <u>SANTOS & PARTNERS</u> WELL <u>CASINO-4</u> FIELD <u>CASINO</u> RIG NAME <u>OCEAN PATRIOT</u> COUNTRY <u>AUSTRALIA</u>	FILE NO: _____ API NO: _____ VIC <u>P-44</u>
	LOCATION: LAT: 38 DEG 47' 13.03" SOUTH LONG: 142 DEG 41' 54.49" EAST EASTING: 647.518.19M E NORTHING: 5.705.495.28M N	ELEVATIONS: KB — DF 22 M GL -70.8 M DATE <u>18-MAY-2005</u>