



Baker Atlas

FILE NO: _____ COMPANY: **SANTOS & PARTNERS**
 WELL: **CASINO-4**
 API NO: _____ FIELD: **CASINO**
 VIC P-44 _____ RIG NAME: **OCEAN PATRIOT** COUNTRY: **AUSTRALIA**

Ver. 3.87 LOCATION: LAT: 38 DEG 47' 13.03" SOUTH
 LONG: 142 DEG 41' 54.49" EAST
 EASTING: 647,518.19M E
 NORTHING: 5,705,495.28M N
 OTHER SERVICES:
 - ZD/CN/DSL/GR
 - MREX/GR

PERMANENT DATUM LOG MEASURED FROM _____ LAT _____ ELEVATION 0 M
 DRILL MEAS. FROM RT _____ RT _____ ABOVE P.D.
 ELEVATIONS:
 KB -
 DF 22 M
 GL -70.8 M

DATE	18-MAY-2005	TRIP	1
SERVICE ORDER	516574		
DEPTH DRILLER	1794 M		
DEPTH LOGGER	1782.5 M (HUD)		
BOTTOM LOGGED INTERVAL	1781.5 M		
TOP LOGGED INTERVAL	1685 M		
CASING DRILLER	340 MM		727.87 M
CASING LOGGER	729 M		
BIT SIZE	311 MM		
TYPE OF FLUID IN HOLE	KCL / IDCAP D		
DENSITY	1.29 G/CC	55 S	
PH	8	3.6 C3	
SOURCE OF SAMPLE	FLOWLINE		
RM AT MEAS. TEMP.	0.102 OHMM	19.95 DEGC	
RMF AT MEAS. TEMP.	0.082 OHMM	19.80 DEGC	
RMC AT MEAS. TEMP.	0.198 OHMM	20.10 DEGC	
SOURCE OF RMF	MEASURED	MEASURED	
RM AT BHT	0.047 OHMM	88.33 DEGC	
TIME SINCE CIRCULATION	19 HOURS		
MAX. RECORDED TEMP.	68.33 DEGC		
EQUIP. NO.	8677	PERTH	
RECORDED BY	S. ARELLANO / M. REYES		
WITNESSED BY	R. SUBRAMANIAN		

IN MAKING INTERPRETATIONS OF LOGS OUR EMPLOYEES WILL GIVE CUSTOMER THE BENEFIT OF THEIR BEST JUDGEMENT. BUT SINCE ALL INTERPRETATIONS ARE OPINIONS BASED ON INFERENCES FROM ELECTRICAL OR OTHER MEASUREMENTS, WE CANNOT, AND WE DO NOT GUARANTEE THE ACCURACY OR CORRECTNESS OF ANY INTERPRETATION. WE SHALL NOT BE LIABLE OR RESPONSIBLE FOR ANY LOSS, COST, DAMAGES, OR EXPENSES WHATSOEVER INCURRED OR SUSTAINED BY THE CUSTOMER RESULTING FROM ANY INTERPRETATION MADE BY ANY OF OUR EMPLOYEES.

BOREHOLE RECORD		
BIT SIZE	FROM	TO
914 MM	SEABED	137.4 M
445 MM	137.4 M	742 M
311 MM	742 M	1794 M

CASING RECORD				
SIZE	WEIGHT	GRADE	FROM	TO
762 MM	N/A	X56	SEABED	137.4 M
340 MM	107 KG/M	L80	SEABED	727.87 M

REMARKS

RUN 1 TRIP 1 :

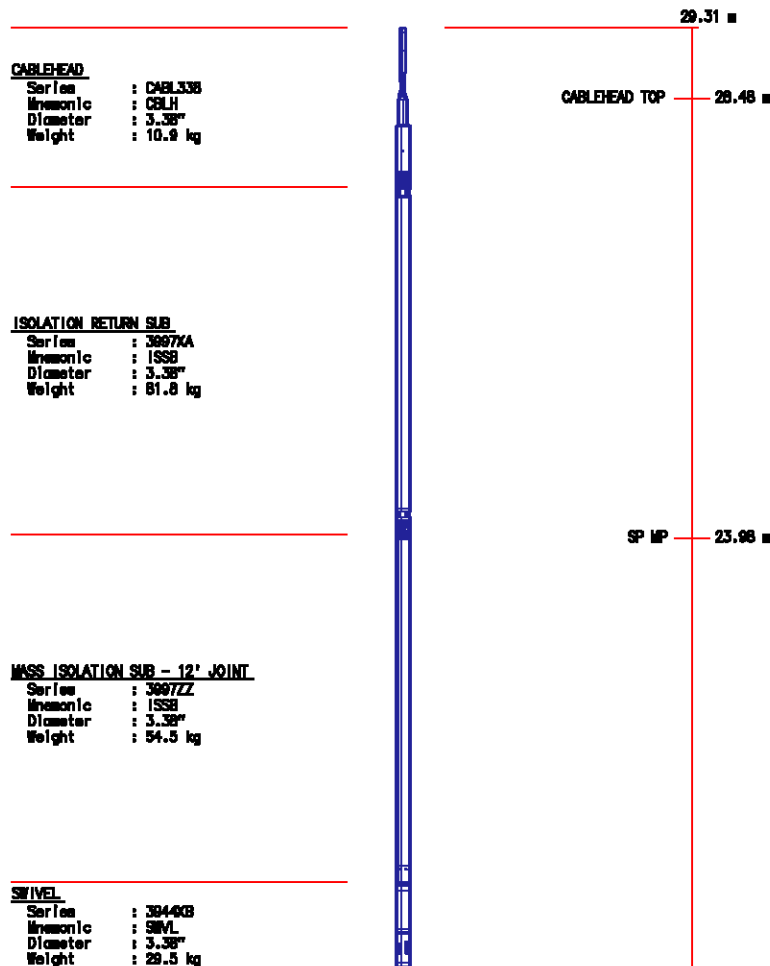
- *. FIRST RUN IN THE HOLE.
- *. TOOL ZEROED @ 08:00 ON 18-05-2005 WITH A TIDAL CORRECTION OF -0.4M.
- *. CIRCULATION STOPPED AT 15:30 ON 17-MAY-2005.
- *. MAX DEPTH REACHED: 1782.5M.
- *. CASING LOGGED @ 729M.
- *. ADDITIONAL MUD PROPERTIES:
 PV/YP: 19 / 31
 SALINITY: 38000 MG/L (52123PPM).
 BARITE: % : KCL: 6%
 SOLIDS: 14% OIL: 0% WATER: 86%.

- *. MAX DEVIATION = 4.65 DEG @ 1301 M (PROVIDED BY CUSTOMER)
- *. MAXIMUM TEMPERATURE RECORDED: 68.33 DEGC.
- *. DLL/MLL/GR RUN IN COMBINATION
- *. REPEAT SECTION NOT LOGGED BY CUSTOMER'S REQUEST.
- *. ALL SCALES & PRESENTATIONS SET IN ACCORDANCE TO THE LOGGING PROGRAM, AND CUSTOMER REQUIREMENTS BOOK
- *. DLL/MLL RUN WITH 1.5" STAND-OFF
- *. GR RECORDED WITH BOTH LIGHT AND NO FILTER
- *. CALIPER RECORDED WITH NO FILTER

EQUIPMENT DATA

RUN	TRIP	TOOL	SERIES NO.	SERIAL NO.	POSITION
1	1	ISO SUB	3997XA	188149	FREE
1	1	ISO SUB	3997XA	152431	FREE
1	1	SWIVEL	3944XB	10127260	FREE
1	1	PWR ADAPT	4430XB	190443	FREE
1	1	TTRM	3981XA	10045152	FREE
1	1	COMM REMOTE	3514XB	178699	FREE
1	1	GR/DSL	1329XB	184113	FREE
1	1	SLAM ADAPTR	3516XA	153446	FREE
1	1	ISO SUB	3967XB	152361	FREE
1	1	DLL E	1239EA	154859	FREE
1	1	DLL M	1239MA	177840	1.5 IN STANDOFF
1	1	MLL	1233MA	154386	PAD

INSTRUMENT CONFIGURATION



DOWNHOLE POWER ADAPTER
 Series : 4430KA
 Inconic : DHPA
 Diameter : 3.62"
 Weight : 36.4 kg

TTRM SUB
 Series : 3881KA
 Inconic : TTRM
 Diameter : 3.63"
 Weight : 36.4 kg

WTS COMMON REMOTE
 Series : 3514KA
 Inconic : WTS
 Diameter : 3.63"
 Weight : 65.5 kg

GAMMA RAY
 Series : 1328KA
 Inconic : DSL
 Diameter : 3.63"
 Weight : 64.5 kg

SLAM ADAPTER
 Series : 3518KA
 Inconic : SLAM
 Diameter : 3.38"
 Weight : 50.0 kg

ISOLATION RETURN SUB
 Series : 3867KB
 Inconic : ISSB

DUAL LATEROLOG MANDREL
 Series : 1238KA
 Inconic : DLLS
 Diameter : 3.63"
 Weight : 124.5 kg

MICROLATEROLOG
 Series : 1233KA
 Inconic : MLL
 Diameter : 4.75"
 Weight : 154.5 kg

BULL PLUG 3 1/8

TOTAL LENGTH: 29.38 m
 TOTAL WEIGHT: 731.8 kg
 MAX DIAMETER: Ø4.75"



TEMP MP 16.95 m
 RM MP 16.88 m

GR MP 12.90 m

RS/RD MP 6.50 m

MLL / CAL MP 1.10 m

0.00 m

CASING CHECK SCALE 1:200

ECLIPS 5.0 Nov 26, 2003
 Updates: 1,2,3,32

Pcrplt /main/59

Cplot 7.09
 Pdf_Cpp /main/16

Wed May 18 16:03:26 2005
 Fileview 4.67

PARAMETER AND FILTER SUMMARY REPORT

FILE: /data/casino4/suite1/i773w12.prm
 LOGGING MODE: DEPTH DIRECTION: UP
 TOP DEPTH: 708.584 m BOTTOM DEPTH: 835.381 m

SYMMETRIC FILTER

MEASUREMENT TYPE	PARAMETER	VALUE	UNITS	INTERVAL (m)	
CHT	FILTER ()	medium (1)		TOP	BOTTOM
TTRM	FILTER ()	medium (1)		"	"
	FILTER (.h)	medium (1)		"	"
	FILTER (.l)	medium (1)		"	"
SPEED	FILTER ()	medium (1)		"	"
TENSION	FILTER ()	medium (1)		"	"
SPSB	FILTER ()	medium (1)		"	"
GR	FILTER ()	light (2)		"	"
Y AXIS CALIPER	FILTER ()	no filter (0)		"	"
DLL	FILTER ()	medium (1)		"	"
MLL	FILTER ()	light (2)		"	"

BOREHOLE & CEMENT

MEASUREMENT TYPE	PARAMETER	VALUE	UNITS	INTERVAL (m)	
BIT SIZE	BIT SIZE	311.150	mm	TOP	BOTTOM
BOREHOLE CORR DIAMETER SOURCE	CALIPER/FIXED DIA. (dlbh*)	USE FIXED SIZE		"	"
BOREHOLE CORR DIAMETER	FIXED DIAMETER (dlbh*)	311.150	mm	"	"
MUD VALUES SOURCE	RMUD SOURCE	TOOL MEASURED		"	"
MUD VALUES	MUD SAMPLE TEMP	23.9	degC	"	"
	MUD SAMPLE RES	1.000	ohm.m	"	"
	MUD REFERENCE TEMP	23.9	degC	"	"
	TEMP GRADIENT	2.187	0.01 degC/m	"	"

SP CONTROL

MEASUREMENT TYPE	PARAMETER	VALUE	UNITS	INTERVAL (m)	
SP CONTROL	Tool/Bridge	CH/BRIDLE		TOP	BOTTOM

DLL PROCESSING

MEASUREMENT TYPE	PARAMETER	VALUE	UNITS	INTERVAL (m)	
DLL BOREHOLE CORRECTION	BOREHOLE CORR	ON		TOP	BOTTOM
	DEEP TYPE	STANDARD		"	"
	SHALLOW TYPE	STANDARD		"	"
	TOOL POSITION	ECCENTERED		"	"
	DEEP CURRENT RTN.	STANDARD		"	"
	CONVEYANCE METHOD	WIRELINE		"	"
	GRONINGEN RTN. DIST	40 FT RETURN		"	"

CURVE DESCRIPTION REPORT

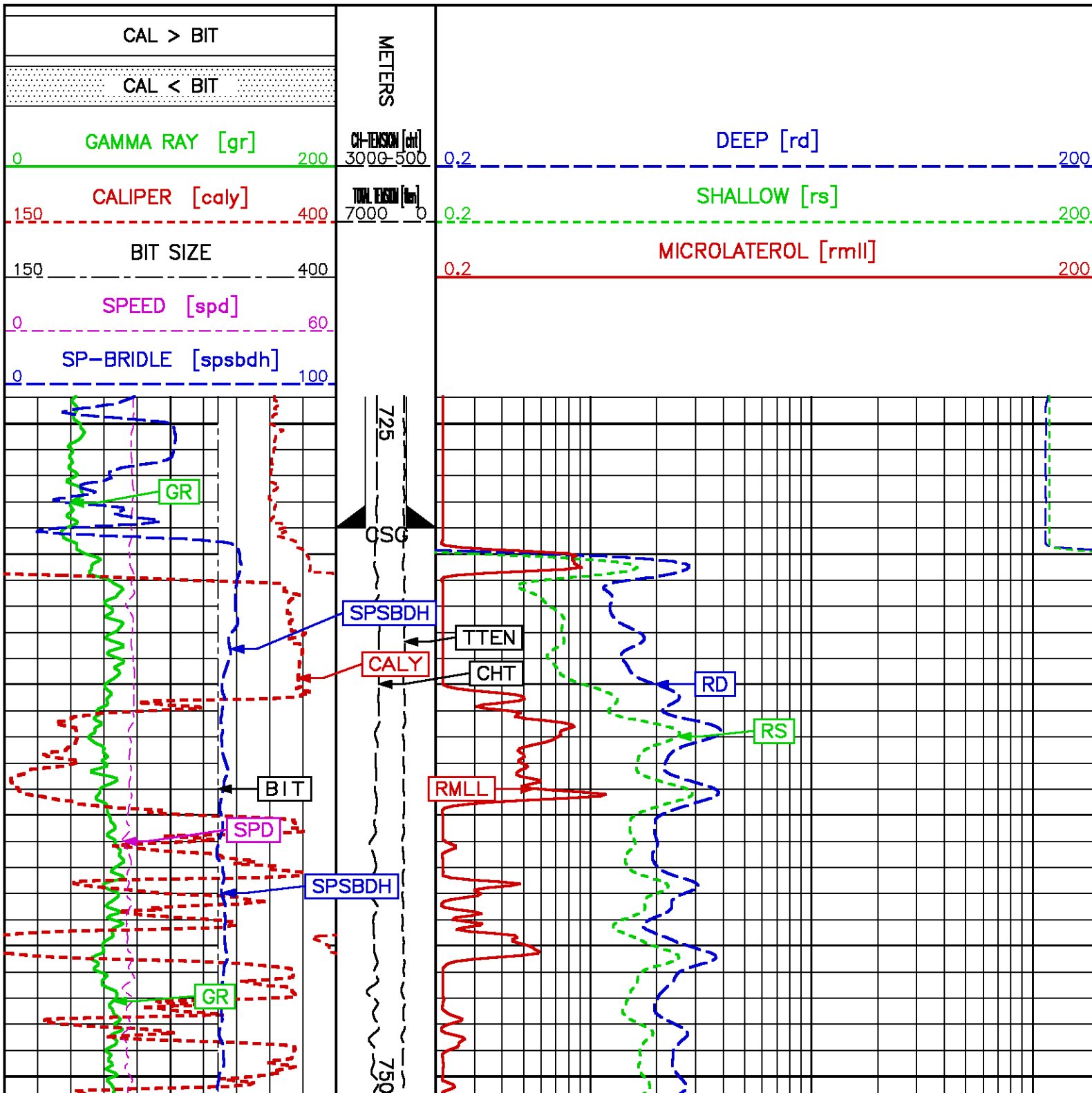
CURVE NAME	CURVE ALIAS	CREATION DATE	CURVE DESCRIPTION
F1:BIT	BIT	May 18 09:23:08 2005	BIT SIZE
F1:CALY	CAL	May 18 09:23:08 2005	CALIPER FROM Y AXIS OF X-Y CALIPER(S)
F1:CHT	CHT	May 18 09:23:08 2005	CABLE HEAD TENSION
F1:GR	GR	May 18 09:23:08 2005	GAMMA RAY
F1:RD	RD	May 18 09:23:08 2005	DEEP RESISTIVITY
F1:RMLL	RMLL	May 18 09:23:08 2005	RESISTIVITY
F1:RS	RS	May 18 09:23:08 2005	SHALLOW RESISTIVITY
F1:SPD	SPD	May 18 09:23:08 2005	SPEED
F1:SPSBDH	SPBR	May 18 09:23:08 2005	ELECTRODE SUB PROCESSED DOWNHOLE
F1:TEN	TEN	May 18 09:23:08 2005	TOTAL TENSION

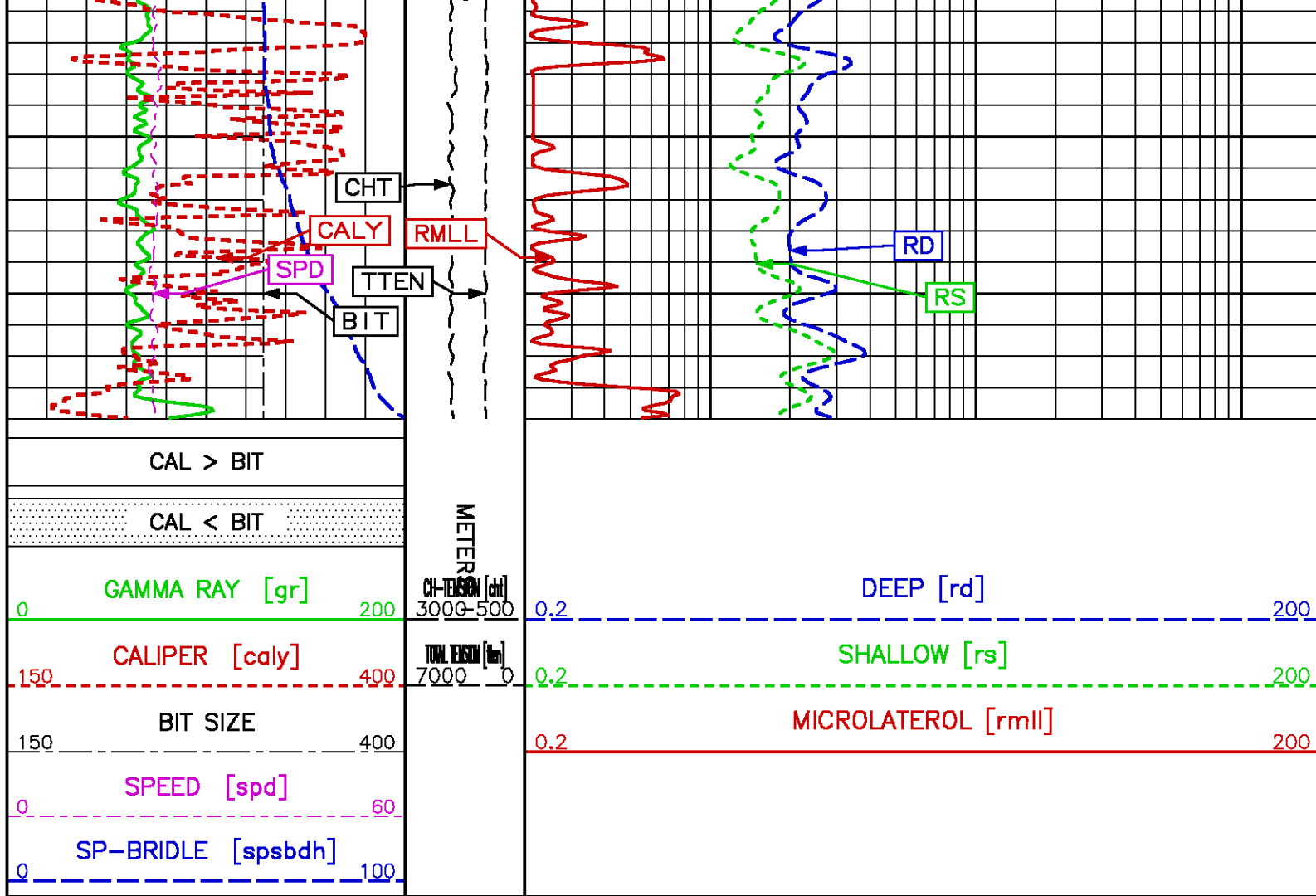
CURVE MEASURE POINT OFFSET

CURVE	OFFSET (m)	CURVE	OFFSET (m)	CURVE	OFFSET (m)	CURVE	OFFSET (m)
BIT	0.00	GR	12.88	RS	6.48	TTEN	0.00
CALY	1.14	RD	6.48	SPD	0.00		
CHT	0.00	RMLL	1.14	SPSBDH	24.00		

Presentation : sys1:/dat1a/casino4/suite1/CASING200.pdf [1:200 Scale]
 Plot Interval : 724 - 764 Meters

Data File 1 : F1 : sys1:/dat1a/casino4/suite1/i773w12.xtf
 Created On : May 18 09:23:08 2005
 Company : SANTOS & PARTNERS
 Well : CASINO-4
 Field : CASINO
 File Interval : 685.648 - 836.295 Meters
 Oct : i773w





CAL > BIT	
CAL < BIT	
GAMMA RAY [gr]	0 200
CALIPER [caly]	150 400
BIT SIZE	150 400
SPEED [spd]	0 60
SP-BRIDLE [spsbdh]	0 100

DEEP [rd]	0.2 200
SHALLOW [rs]	0.2 200
MICROLATERAL [rml]	0.2 200

MAIN LOG SCALE 1:200

ECLIPS 5.0 Nov 26, 2003
Updates: 1,2,3,32

Pcrplt /main/59

Cplot 7.09
Pdf_Cpp /main/16

Wed May 18 15:47:56 2005
Fileview 4.67

PARAMETER AND FILTER SUMMARY REPORT

FILE: /data/casino4/suite1/1773w15.prm
LOGGING MODE: DEPTH DIRECTION: UP
TOP DEPTH: 1677.695 m BOTTOM DEPTH: 1784.909 m

SYMMETRIC FILTER

MEASUREMENT TYPE	PARAMETER	VALUE	UNITS	INTERVAL (m)
CHT	FILTER ()	medium (1)		TOP BOTTOM
TTRM	FILTER ()	medium (1)		" "
	FILTER (.h)	medium (1)		" "
	FILTER (.l)	medium (1)		" "
SPEED	FILTER ()	medium (1)		" "
TENSION	FILTER ()	medium (1)		" "
SPSB	FILTER ()	medium (1)		" "
GR	FILTER ()	light (2)		" "
Y AXIS CALIPER	FILTER ()	no filter (0)		" "
DLL	FILTER ()	medium (1)		" "
MLL	FILTER ()	light (2)		" "

BOREHOLE & CEMENT

MEASUREMENT TYPE	PARAMETER	VALUE	UNITS	INTERVAL (m)	
BIT SIZE	BIT SIZE	311.150	mm	TOP	BOTTOM
BOREHOLE CORR DIAMETER SOURCE	CALIPER/FIXED DIA. (dibh*)	USE CALIPER		"	"
BOREHOLE CORR DIAMETER	FIXED DIAMETER (dibh*)	311.150	mm	"	"
MUD VALUES SOURCE	RMUD SOURCE	TOOL MEASURED		"	"
MUD VALUES	MUD SAMPLE TEMP	23.9	degC	"	"
	MUD SAMPLE RES	1.000	ohm.m	"	"
	MUD REFERENCE TEMP	23.9	degC	"	"
	TEMP GRADIENT	2.187	0.01 degC/m	"	"

SP CONTROL

MEASUREMENT TYPE	PARAMETER	VALUE	UNITS	INTERVAL (m)	
SP CONTROL	Tool/Bridge	CH/BRIDLE		TOP	BOTTOM

DLL PROCESSING

MEASUREMENT TYPE	PARAMETER	VALUE	UNITS	INTERVAL (m)	
DLL BOREHOLE CORRECTION	BOREHOLE CORR	ON		TOP	BOTTOM
	DEEP TYPE	STANDARD		"	"
	SHALLOW TYPE	STANDARD		"	"
	TOOL POSITION	ECCENTERED		"	"
	DEEP CURRENT RTN.	STANDARD		"	"
	CONVEYANCE METHOD	WIRELINE		"	"
	GRONINGEN RTN. DIST	40 FT RETURN		"	"

CURVE DESCRIPTION REPORT

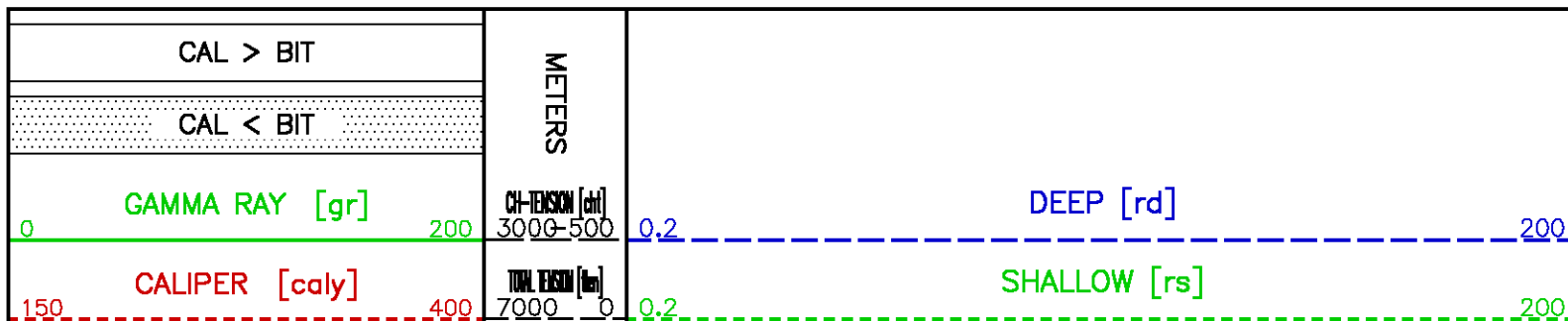
CURVE NAME	CURVE ALIAS	CREATION DATE	CURVE DESCRIPTION
F1:BIT	BIT	May 18 10:30:09 2005	BIT SIZE
F1:CALY	CAL	May 18 10:30:09 2005	CALIPER FROM Y AXIS OF X-Y CALIPER(S)
F1:CHT	CHT	May 18 10:30:09 2005	CABLE HEAD TENSION
F1:GR	GR	May 18 10:30:09 2005	GAMMA RAY
F1:RD	RD	May 18 10:30:09 2005	DEEP RESISTIVITY
F1:RMLL	RMLL	May 18 10:30:09 2005	RESISTIVITY
F1:RS	RS	May 18 10:30:09 2005	SHALLOW RESISTIVITY
F1:SPD	SPD	May 18 10:30:09 2005	SPEED
F1:SPSBDH	SPBR	May 18 10:30:09 2005	ELECTRODE SUB PROCESSED DOWNHOLE
F1:TEN	TEN	May 18 10:30:09 2005	TOTAL TENSION

CURVE MEASURE POINT OFFSET

CURVE	OFFSET (m)	CURVE	OFFSET (m)	CURVE	OFFSET (m)	CURVE	OFFSET (m)
BIT	0.00	GR	12.88	RS	6.48	TEN	0.00
CALY	1.14	RD	6.48	SPD	0.00		
CHT	0.00	RMLL	1.14	SPSBDH	24.00		

Presentation : sys1:/dat1a/casino4/suite1/DLLMLLMAIN200.pdf [1:200 Scale]
 Plot Interval : 1685 - 1784.91 Meters

Data File 1 : F1 : sys1:/dat1a/casino4/suite1/1773w15.xtf
 Created On : May 18 10:30:09 2005
 Company : SANTOS & PARTNERS
 Well : CASINO-4
 Field : CASINO
 File Interval : 1654 - 1784.91 Meters
 Oct : 1773w



BIT SIZE

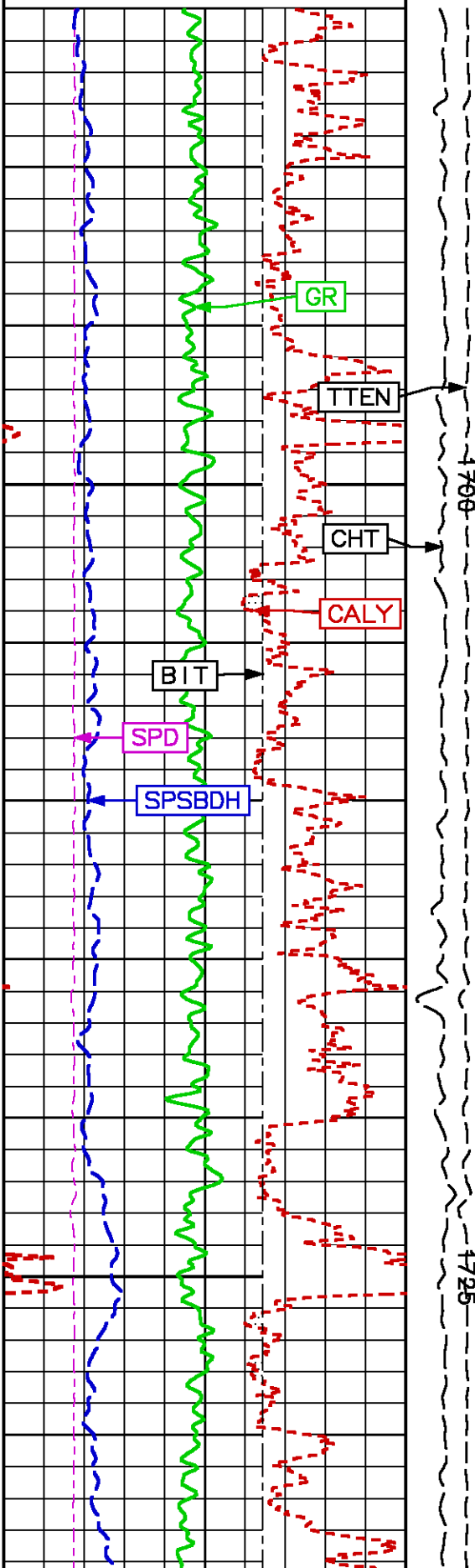
150 400

SPEED [spd]

0 60

SP-BRIDLE [spsbdh]

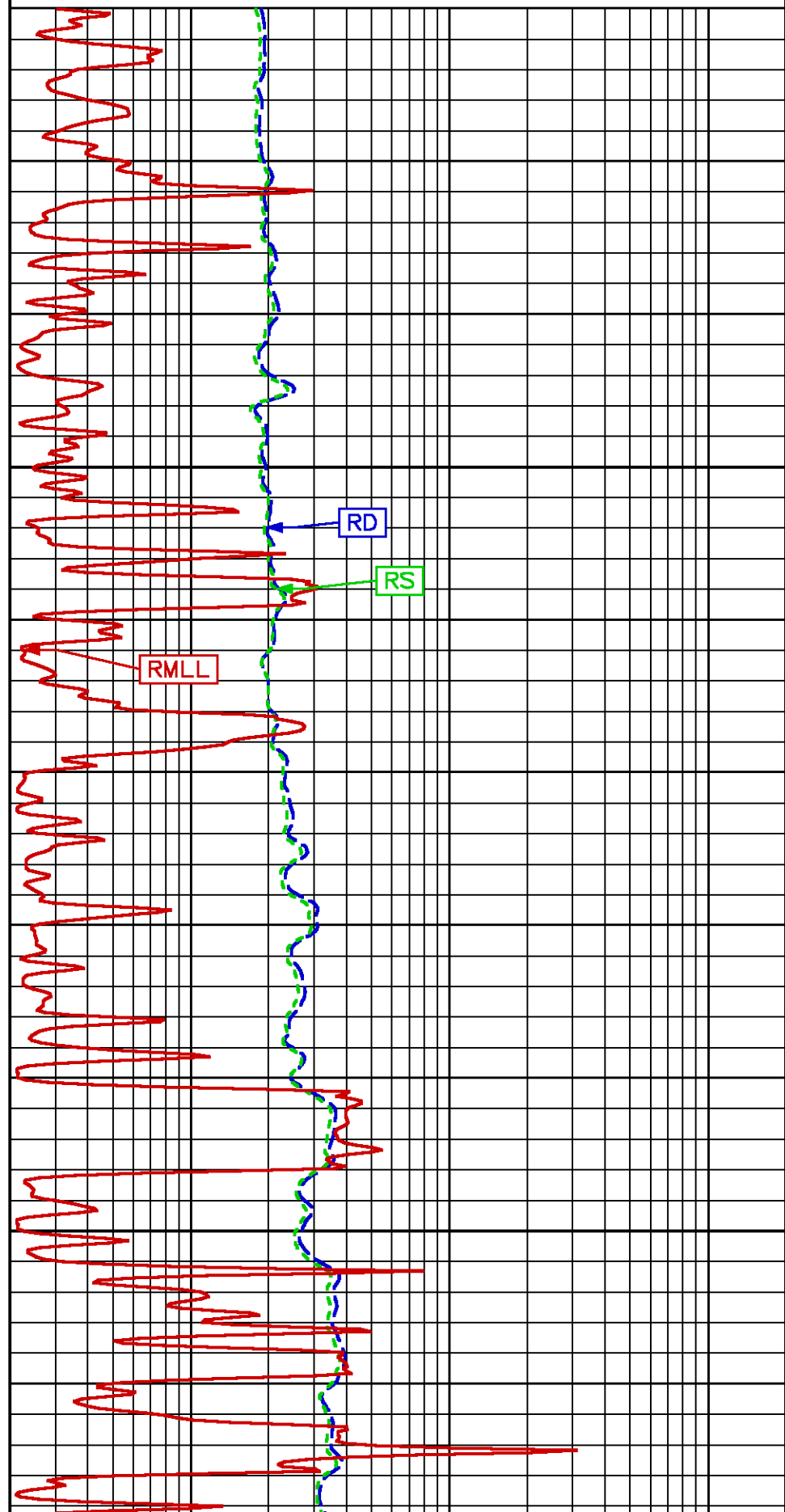
0 100

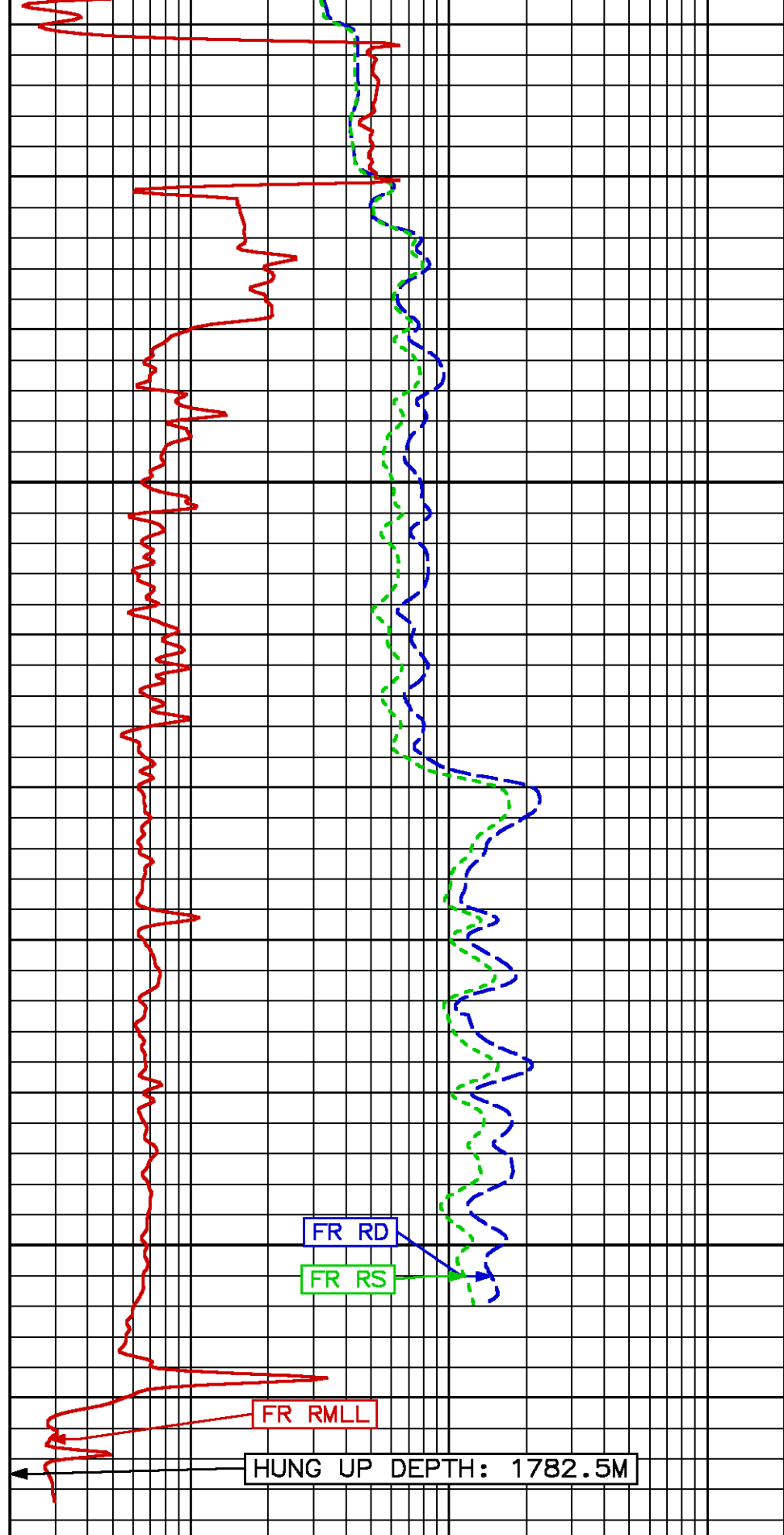
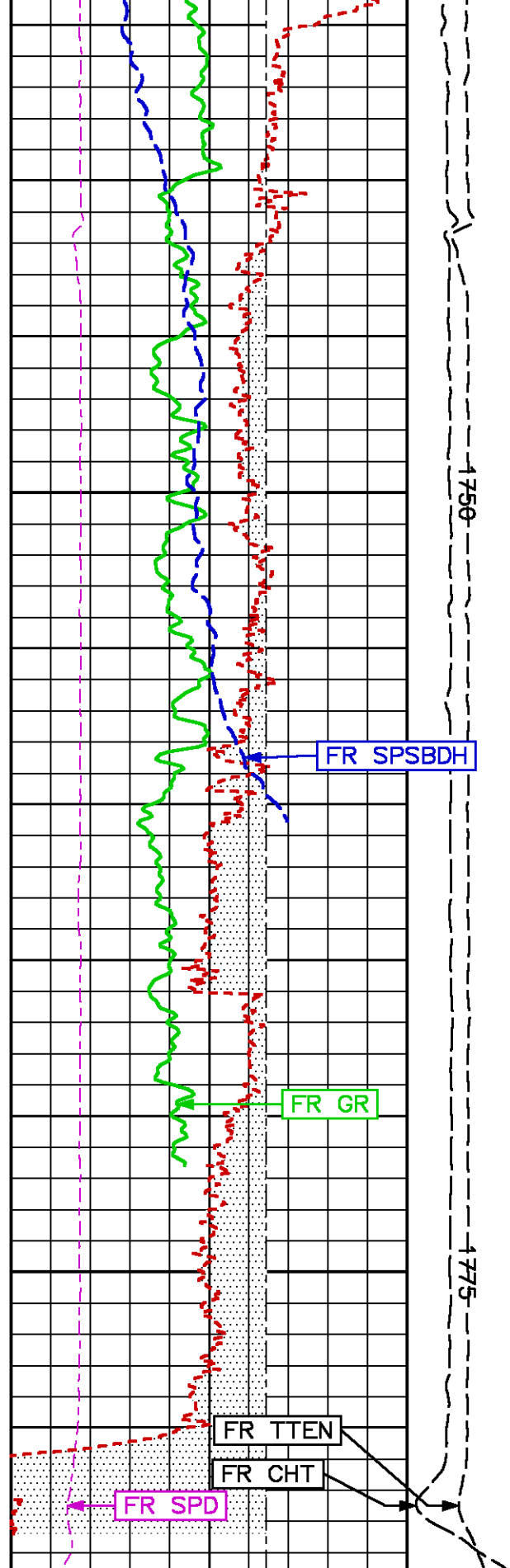


MICROLATEROL [rml]

0.2

200





CAL > BIT

CAL < BIT

METERS

0	GAMMA RAY [gr]	200	3000-500	0.2	DEEP [rd]	200
150	CALIPER [caly]	400	7000	0.2	SHALLOW [rs]	200
150	BIT SIZE	400		0.2	MICROLATEROL [rml]	200
0	SPEED [spd]	60				
0	SP-BRIDLE [spsbdh]	100				

CALIBRATION / VERIFICATION SUMMARY

GR PRIMARY CALIBRATION SUMMARY

TOOL #: 1329XA 184113 DATE/TIME PERFORMED: Sat May 14 13:10:02 2005

UNIT #: 3854SA 008677 CALB JIG #: 4702NK S2K-WA671

	BACKGROUND (cts/s)	CALBRTR ON (cts/s)	CR DIFF (cts/s)	MULT	BACKGROUND (gAPI)	CALBRTR ON (gAPI)	CALBRTR (gAPI)
GR	494.47	1410.51	916.0 <small>870.0 960.0</small>	0.164	80.97	230.97	150

GR PRIMARY VERIFICATION SUMMARY

TOOL #: 1329XA 184113 DATE/TIME PERFORMED: Sat May 14 13:12:10 2005

UNIT #: 3854SA 008677 VERI JIG #: 4702NK S2K-WA671

	BACKGROUND (cts/s)	CALBRTR ON (cts/s)	MULT	BACKGROUND (gAPI)	CALBRTR ON (gAPI)	DIFF. (gAPI)
GR	512.62	1418.33	0.164	83.94	232.25	148.31 <small>140.00 160.00</small>

GR BEFORE LOG VERIFICATION SUMMARY

TOOL #: 1329XA 184113 DATE/TIME PERFORMED: Sat May 14 13:14:50 2005

UNIT #: 3854SA 008677 VERI JIG #: 4702NK S2K-WA671

	BACKGROUND (cts/s)	CALBRTR ON (cts/s)	MULT	BACKGROUND (gAPI)	CALBRTR ON (gAPI)	DIFF. (gAPI)
GR	514.00	1417.22	0.164	84.17	232.07	147.90 <small>138.31 158.31</small>

GR AFTER LOG VERIFICATION SUMMARY

TOOL #: 1329XA 184113

DATE/TIME PERFORMED: Wed May 18 11:52:52 2005

UNIT #: 3854SA 008677

VERI JIG #: 4702NK S2K-WA671

	BACKGROUND CALBRTR ON (cts/s)		MULT	BACKGROUND CALBRTR ON (gAPI)		DIFF. (gAPI)
GR	53.44	980.47	0.164	8.75	160.55	151.80
						137.90 157.90

DLL PRIMARY CALIBRATION SUMMARY

TOOL #: 1239MA 177840

DATE/TIME PERFORMED: Sat May 14 13:01:46 2005

UNIT #: 3854SA 008677

	Sig Low (raw)	Sig High (raw)	Scale Add	Scale Mult	Engr Low (ohm.m)	Engr High (ohm.m)
ED Deep Volt	320.0	4019.9				
ID Deep Curr	1724.1	22.7				
ES Shallow Volt	300.9	3773.9				
IS Shallow Curr	1024.2	12.2				
RD Deep Resist			-0.00001	0.01954	9.5	9500.0
RS Shallow Resist			0.00000	0.01848	15.9	15900.0

DLL AFTER LOG VERIFICATION SUMMARY

TOOL #: 1239MA 177840

DATE/TIME PERFORMED: Wed May 18 11:24:22 2005

UNIT #: 3854SA 008677

	Sig Low (raw)	Sig High (raw)	Scale Add	Scale Mult	Engr Low (ohm.m)	Engr High (ohm.m)
ED Deep Volt	321.0	4023.7				
ID Deep Curr	1724.6	22.8				
ES Shallow Volt	300.5	3760.3				
IS Shallow Curr	1021.2	12.5				
RD Deep Resist			-0.00001	0.01954	9.5	9484.2

RS Shallow Resist

0.00000 0.01848

9.0	10.0	8000.0	11000.0
15.4	16.4	14400.0	17400.0

15.9 15464.6

CAL PRIMARY CALIBRATION SUMMARY

TOOL #: 1233XA 154386

DATE/TIME PERFORMED: Sat May 14 09:52:13 2005

UNIT #: 3854SA 008677

	SMALL RING (mV)	LARGE RING (mV)	MULT	ADD	SMALL RING (mm)	LARGE RING (mm)
CALIPER	1803.2	2500.5	0.15027	-70.93719	200.025	304.800

CAL BEFORE LOG VERIFICATION SUMMARY

TOOL #: 1233XA 154386

DATE/TIME PERFORMED: Wed May 18 08:43:05 2005

UNIT #: 3854SA 008677

	I.D. (mV)	MULT	ADD	I.D. (mm)
CALIPER	2555.1	0.15027	-70.93719	312.999

CAL AFTER LOG VERIFICATION SUMMARY

TOOL #: 1233XA 154386

DATE/TIME PERFORMED: Wed May 18 11:32:43 2005

UNIT #: 3854SA 008677

	I.D. (mV)	MULT	ADD	I.D. (mm)
CALIPER	2576.7	0.15027	-70.93719	316.246
				300.299 325.699

MLL PRIMARY CALIBRATION SUMMARY

TOOL #: 1233XA 154386

DATE/TIME PERFORMED: Sat May 14 08:56:52 2005

UNIT #: 3854SA 008677

	INT ZERO (raw)	INT CAL (raw)	MULT	ADD	ZERO (mmho/m)	CAL (mmho/m)
MLL Conductivity	0.824	1037.72	0.96345	0.20614	1.000	1000.00
	-2.000 4.000	900.00 1100.00				

MLL AFTER LOG VERIFICATION SUMMARY

TOOL #: 1233XA 154386

DATE/TIME PERFORMED: Wed May 18 11:24:09 2005

UNIT #: 3854SA 008677

	INT ZERO (raw)	INT CAL (raw)	MULT	ADD	ZERO (mmho/m)	CAL (mmho/m)
MLL Conductivity	1.587	1001.22	0.96345	0.20614	1.735	964.83
					0.000 2.000	950.00 1050.00



COMPANY SANTOS & PARTNERS
 WELL CASINO-4
 FIELD CASINO
 RIG NAME OCEAN PATRIOT COUNTRY AUSTRALIA

FILE NO: _____
 API NO: _____
 VIC P-44

Baker Atlas



LOCATION:
 LAT: 38 DEG 47' 13.03" SOUTH
 LONG: 142 DEG 41' 54.49" EAST
 EASTING: 647.518.19M E
 NORTHING: 5.705.495.28M N

ELEVATIONS:

KB —
 DF 22 M
 GL -70.8 M

SCALE 1:200

DATE 18-MAY-2005