



# VERTICAL SEISMIC PROFILE

**ZERO OFFSET VSP**  
 REVERSE POLARITY  
 VSP AND GEOGRAM COMPOSITE

**Plot 7**  
 20 CM/SEC

Company: ESSO AUSTRALIA LTD

Well: TURRUM6

Field: TURRUM

Country: AUSTRALIA

Reference No: SV1561162581163

Date Logged: 14 OCT 1995

Location: 038 14 11.1087 S

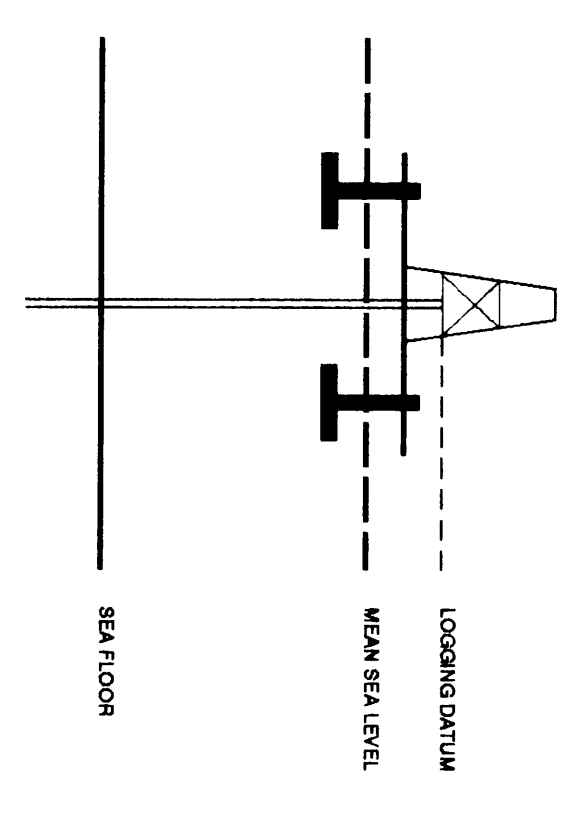
Elevation: 25.00

Permanent Datum: MSL

Logging Datum: 25.00

Seismic Reference Datum: 0.00

Logging Datum: 25.00  
 Seismic Reference Datum: 0.00



Total Number of Levels: 88

Time Reference	SRD	SRD	SRD	SRD
1	28-9-84	DL/DL/DH	17.5 N	28.0 N
2	15-10-84	DL/DL/DH	12.2 N	13.3 N
3	14-10-84	DL/DL/DH	8.0 N	8.0 N

All interpretations are opinions based on inferences from electrical or other measurements and we cannot, and do not guarantee the accuracy or correctness of any interpretations, and we shall not, except in the case of gross or willful negligence on our part, be liable or responsible for any loss, costs, damages or expenses incurred or sustained by anyone resulting from any interpretations made by any of our officers, agents or employees. These interpretations are also subject to Clause 4 of our General Terms and Conditions as set out in our current Price Schedule.

**WAVESHAPING**  
 WAVESHAPING DECONVOLUTION  
 -90 DEG. PHASE ROTATION (5-70 HZ)  
 ENHANCED UPDROING WAVEFIELD  
 VERTICAL SCALE : 20 CM/SEC  
 POLARITY (SEC.) : REVERSE

**CORRIDOR STACK**  
 -90 DEG. PHASE ROTATION

**CORRIDOR STACK + AGC**  
 300 MS AGC WINDOW  
 -90 DEG. PHASE ROTATION

**GEOGRAM 35 HZ.**  
 -90 DEG. PHASE ROTATION  
 REVERSE POLARITY

**GEOGRAM 25 HZ.**  
 -90 DEG. PHASE ROTATION  
 REVERSE POLARITY

**GEOGRAM 45 HZ.**  
 -90 DEG. PHASE ROTATION  
 REVERSE POLARITY

**INVERTED IMPEDANCE**

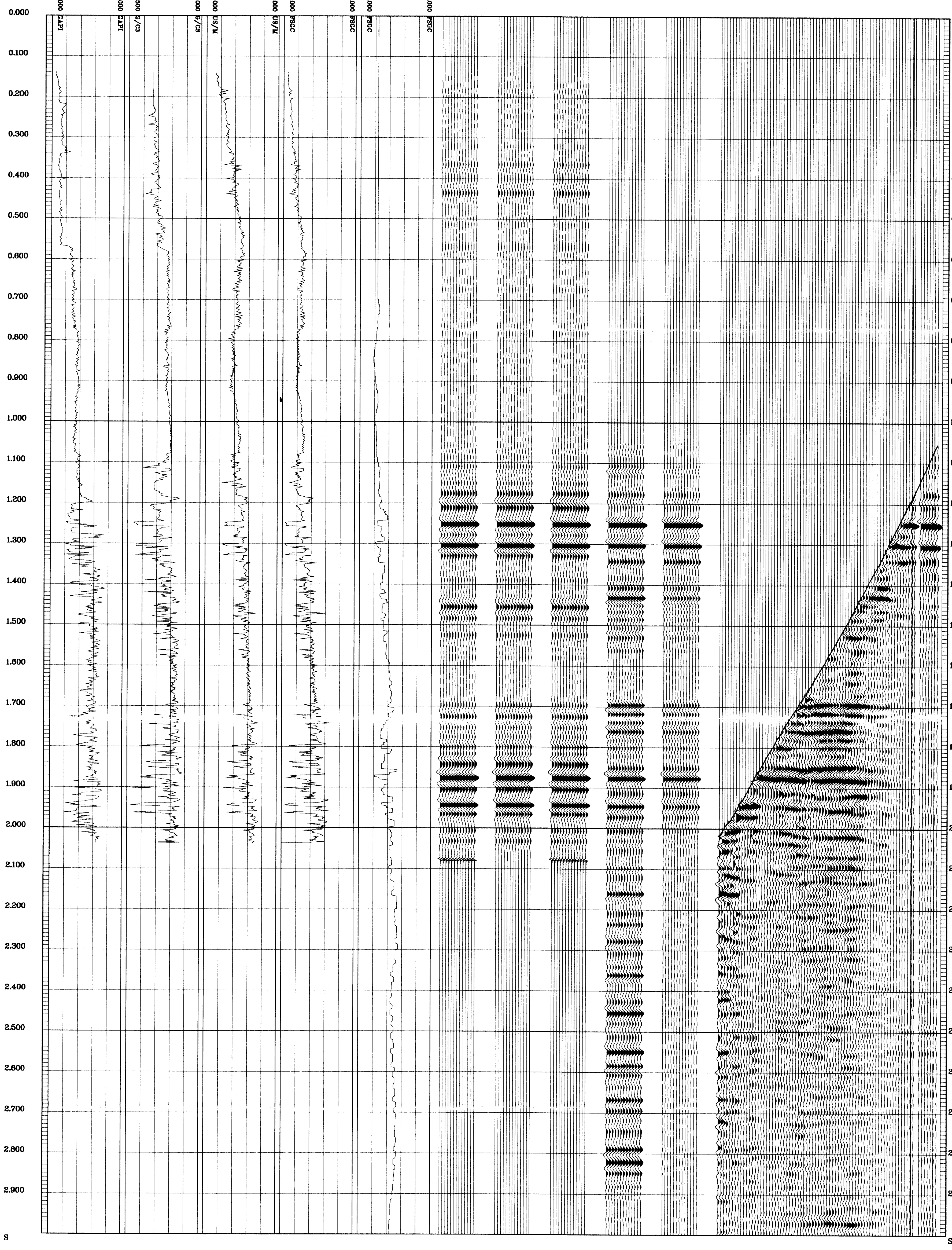
**LOGGED IMPEDANCE**

**SONIC**

**DENSITY**

**GAMMA RAY**

DEPTH (M)	TRANSIT TIME (SEC)	LEVEL NO.
0.00	0.000	1
0.10	0.000	1
0.20	0.000	1
0.30	0.000	1
0.40	0.000	1
0.50	0.000	1
0.60	0.000	1
0.70	0.000	1
0.80	0.000	1
0.90	0.000	1
1.00	0.000	1
1.10	0.000	1
1.20	0.000	1
1.30	0.000	1
1.40	0.000	1
1.50	0.000	1
1.60	0.000	1
1.70	0.000	1
1.80	0.000	1
1.90	0.000	1
2.00	0.000	1
2.10	0.000	1
2.20	0.000	1
2.30	0.000	1
2.40	0.000	1
2.50	0.000	1
2.60	0.000	1
2.70	0.000	1
2.80	0.000	1
2.90	0.000	1



COMPANY ESSO AUSTRALIA LTD  
 FIELD TURRUM  
 WELL TURRUM-6  
 COUNTRY AUSTRALIA

