

# SEISMIC CALIBRATION LOG

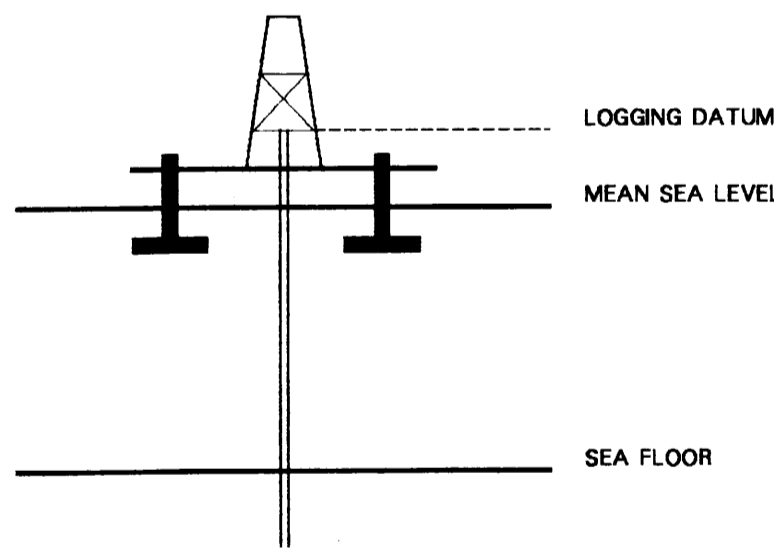


(Adjusted Continuous Velocity Log)

Company: ESSO AUSTRALIA LTD.  
Well: SNOOK #1  
Field: WILDCAT  
Country: AUSTRALIA  
Reference No: 56558 Interval: 1526.00 to 175.00  
Date Logged: 26 JAN 90 Date Processed: 12/2/90  
Location: 38 19'41.46" S 147 24'17.87" E  
Elevations: KB: 21.00 DF: 20.70 GL: -28.00  
Permanent Datum: MSL Depth Units: METRES  
FIELD RECORDING: Engineer: AGUS H. Location: Program Version: 32.2  
COMPUTATION: Analyst: ZKATELIS Centre: SYJ Baseline: 16.11X3

ELEVATION ABOVE MEAN SEA LEVEL

Logging Datum: 21.00  
Seismic Reference Datum: 0.00



Total Number of Levels: 12  
Depth Reference: SRD  
Time Reference: SRD

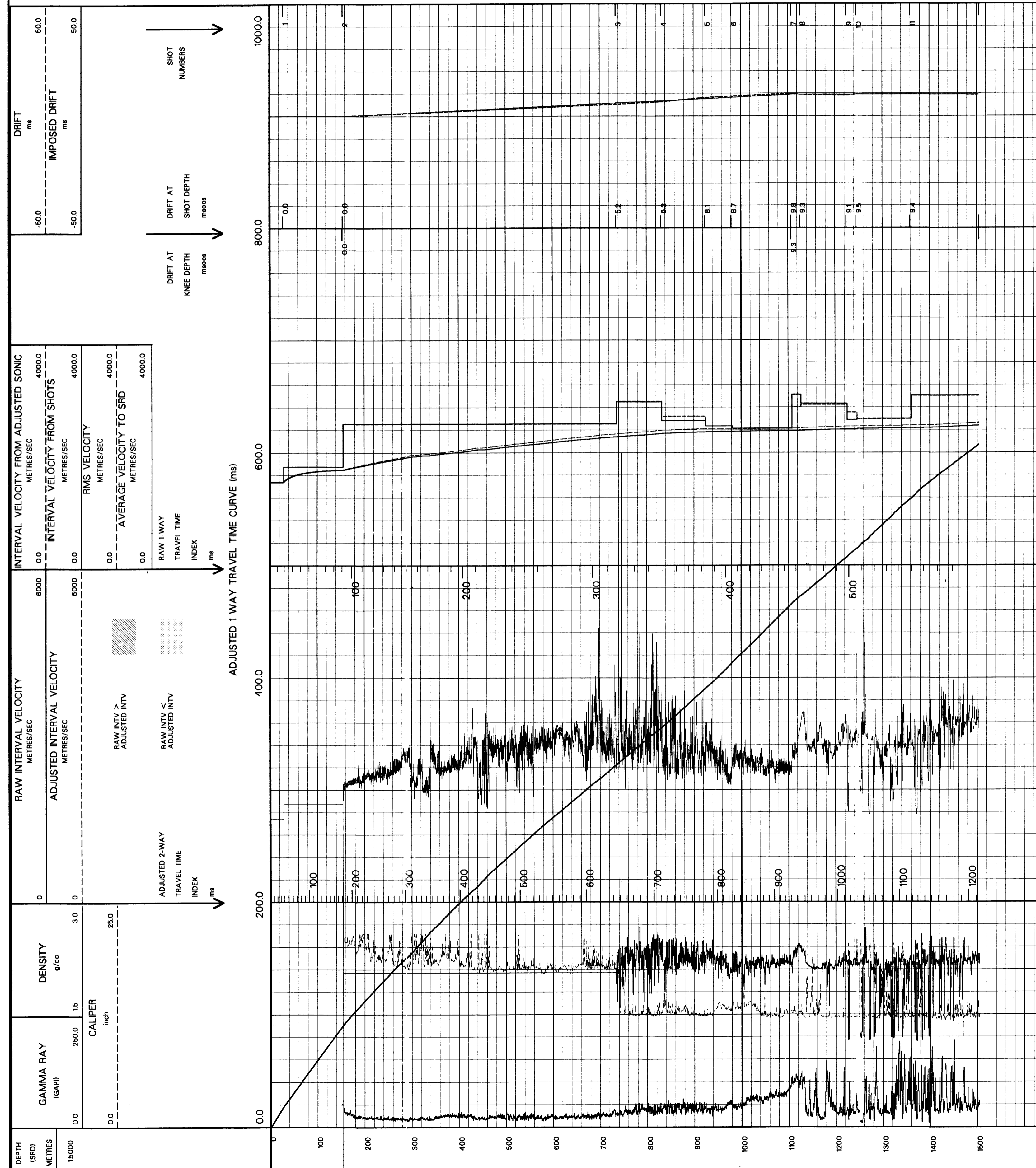
Run	Date	Tool Type	Bit Size/Depth	Casing Size/Depth	Top Depth	Bottom Depth	
					175	1526	
VSP Run	Date	Gun Offset	Hydro Offset	Gun Elevation	Hydro Elevation	Gun Azimuth	Hydro Azimuth
1	24-2-90	40 M	40 M	5 BELOW MSL	9 M BELOW MSL	95 DEG	95 DEG

REMARKS

The well name, location and borehole reference data were furnished by the customer.

All interpretations are opinions based on inferences from electrical or other measurements and we cannot, and do not guarantee, the accuracy of our interpretations. We are not responsible for any loss, costs, damages or expenses incurred or sustained by anyone resulting from any interpretations made by any of our officers, agents or employees. These interpretations are also subject to Clause 4 of our General Terms and Conditions as set out in our current Price Schedule.

FOLD HERE



COMPANY ESSO AUSTRALIA LTD.  
FIELD WILDCAT  
WELL SNOOK #1  
COUNTRY AUSTRALIA