

# GEOGRAM\*

(Synthetic Seismogram)

© Mark of Schlumberger

**45 HZ**

Company: **ESSO AUSTRALIA LTD.**  
 Well: **SMILER-1**  
 Field: **WILDCAT**  
 Country: **AUSTRALIA**  
 Reference No: **SVJ 561131/561132** Interval: **2614.00 to 182.00**  
 Date Logged: **13-JULY-1995** Date Processed: **21-JULY-1995**  
 Location: **038 28 53.18" S 148 23 17.09" E**  
 Elevations: **KI: 25.00 DF: 24.70 GL: -122.00**  
 Permanent Datum: **MSL** Depth Units: **METRES**

**LOG INFORMATION**

FIELD RECORDING: Engineer: **ROUSSEAU HOOKWAY/MSL** VEA Program Version: **700-47**  
 COMPUTATION: Analyst: **A WISSON** Centre: **SVJ** Baseline: **20.6**

Logging Datum: **ELEVATION ABOVE MEAN SEA LEVEL**  
 25.00  
 Seismic Reference Datum: **0.00**  
 Sonic Calibration by Check Shots: **YES** Sonic Edited by Analyst: **YES**  
 Two-Way Time Sample Interval: **2 ms** Environment:

True Vertical Depth Corrections Applied:  
 Source of True Vertical Depth Data:  
 Maximum Hole Deviation: **0**

Run	Date	Tool Type	Bit Size	Depth	Casing Size	Depth	Top Depth	Bottom Depth
ONE	04/07/1995	AS-10L	17.5 N	17.5 N			17.0 M	757 M
TWO	12/07/1995	DLL-DL-4AS	12.25 N	12.25 N			748 M	2806 M
VSP	04/07/1995	Gun	Gun	Gun	Hydro	Hydro	Gun	Hydro
ONE	13/07/1995	50 M	50 M	5 M BELOW MSL	10 M BELOW MSL	69 DEG	69 DEG	69 DEG

**GEOGRAM MODEL ASSUMPTIONS**

Equal time slice model of horizontal plane layers.  
 Plane acoustic waves at normal incidence.  
 No intrinsic attenuation.  
**POLARITY**  
 An upgoing wave, reflected by an increase in acoustic impedance with depth, is displayed as a white trough under normal polarity.  
**SIGNATURES**  
 All signatures displayed in the Geogram results correspond to a wavelet convolved with a reflection coefficient of 0.5 (A decrease in acoustic impedance with depth).

**REMARKS**

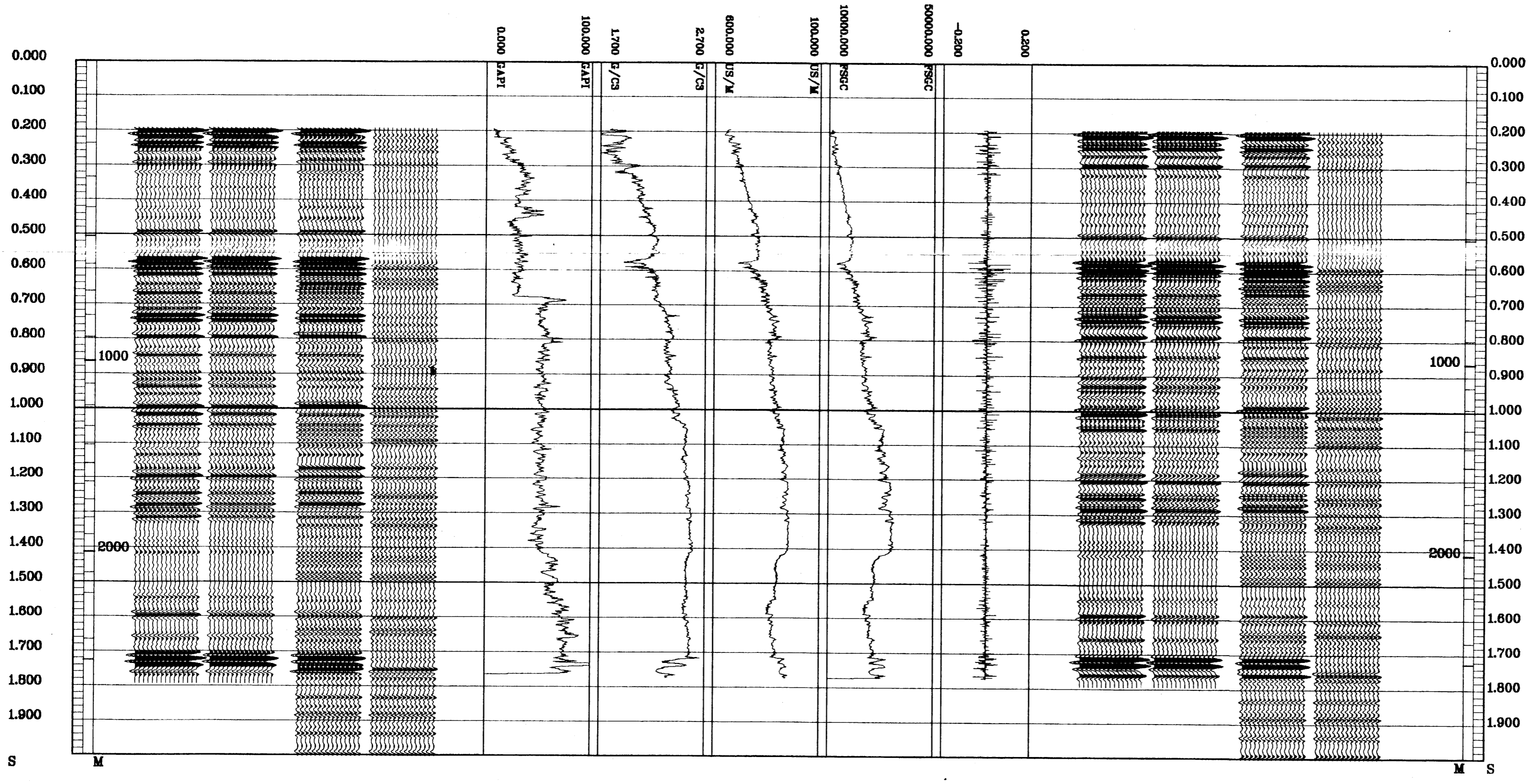
FOLD HERE

The well name, location and borehole reference data were furnished by the customer.

All interpretations are opinions based on inferences from electrical or other measurements and we cannot, and do not guarantee the accuracy or correctness of any interpretations, and we shall not, except in the case of gross or willful negligence on our part, be liable or responsible for any loss, costs, damages or expenses incurred or sustained by anyone resulting from any interpretations made by any of our officers, agents or employees. These interpretations are also subject to Clause 4 of our General Terms and Conditions as set out in our current Price Schedule.

**\*\* GEOGRAM \*\***  
**45 HERTZ ZERO PHASE RICKER WAVELET**  
**VERTICAL SCALE = 10 CM/SEC**

MULTIPLES ONLY REVERSE POLARITY
PRIMARYS AND MULTIPLES REVERSE POLARITY
PRIMARYS WITH TRANSMISSION LOSS REVERSE POLARITY
PRIMARYS REVERSE POLARITY
REFLECTION
ACOUSTIC IMPEDANCE
SONIC
DENSITY
GAMMA RAY
MULTIPLES ONLY NORMAL POLARITY
PRIMARYS AND MULTIPLES NORMAL POLARITY
PRIMARYS WITH TRANSMISSION LOSS NORMAL POLARITY
PRIMARYS NORMAL POLARITY



COMPANY **ESSO AUSTRALIA LTD.**  
 FIELD **WILDCAT**  
 WELL **SMILER-1**  
 COUNTRY **AUSTRALIA**

