



# GEOGRAM\*

(Synthetic Seismogram)

Company: ESSO AUSTRALIA LTD.  
 Well: SAWBELLY-1  
 Field: WILDCAT  
 Country: AUSTRALIA  
 Reference No: 540770 Interval: 3067.9999 to 206.00  
 Date Logged: 22-03-90 Date Processed: 19-04-90  
 Location: 38 22 31.07 S 148 02 05.97 E  
 Elevations: KB: 21.00 DF: 20.70 GL: -63.00  
 Permanent Datum: MSL Depth Units: METRES

**LOG INFORMATION**  
 FIELD RECORDING: Engineer: A HERNANDEZ Location: WML Program Version: 32.4  
 COMPUTATION: Analyst: K MCPHAIL Centre: 451 Station: 142  
 ELEVATION ABOVE MEAN SEA LEVEL  
 Logging Datum: 21.00  
 Seismic Reference Datum: 0.00  
 Sonic Calibration By Check Shots: YES Sonic Edited By Analyst: YES  
 Two-Way Time Sample Interval: 2 ms Environment: offshore

True Vertical Depth Corrections Applied  
 Source of True Vertical Depth Data:  
 Maximum Hole Deviation:

Run	Date	Tool Type	Bit Size	Depth	Casing Size	Top Depth	Bottom Depth
1	07-03-90	BHC	171.2 @ 815.6 M	20 @ 168 M	158 M	815 M	
2	20-03-90	BHC	121.4 @ 3068 M	133.8 @ 798 M	798 M	3068 M	
1	20-03-90	GM	40 M	5 M BELOW	10 M BELOW	42	42

**GEOGRAM MODEL ASSUMPTIONS**  
 Equal time slice model of horizontal plane layers.  
 Plane acoustic waves at normal incidence.  
 No intrinsic attenuation.  
**POLARITY**  
 An upgoing wave, reflected by an increase in acoustic impedance with depth, is displayed as a white trough under normal polarity.  
**SIGNATURES**  
 All signatures displayed in the Geogram results correspond to a wavelet convolved with a reflection coefficient of -0.5 (A decrease in acoustic impedance with depth).  
 REMARKS

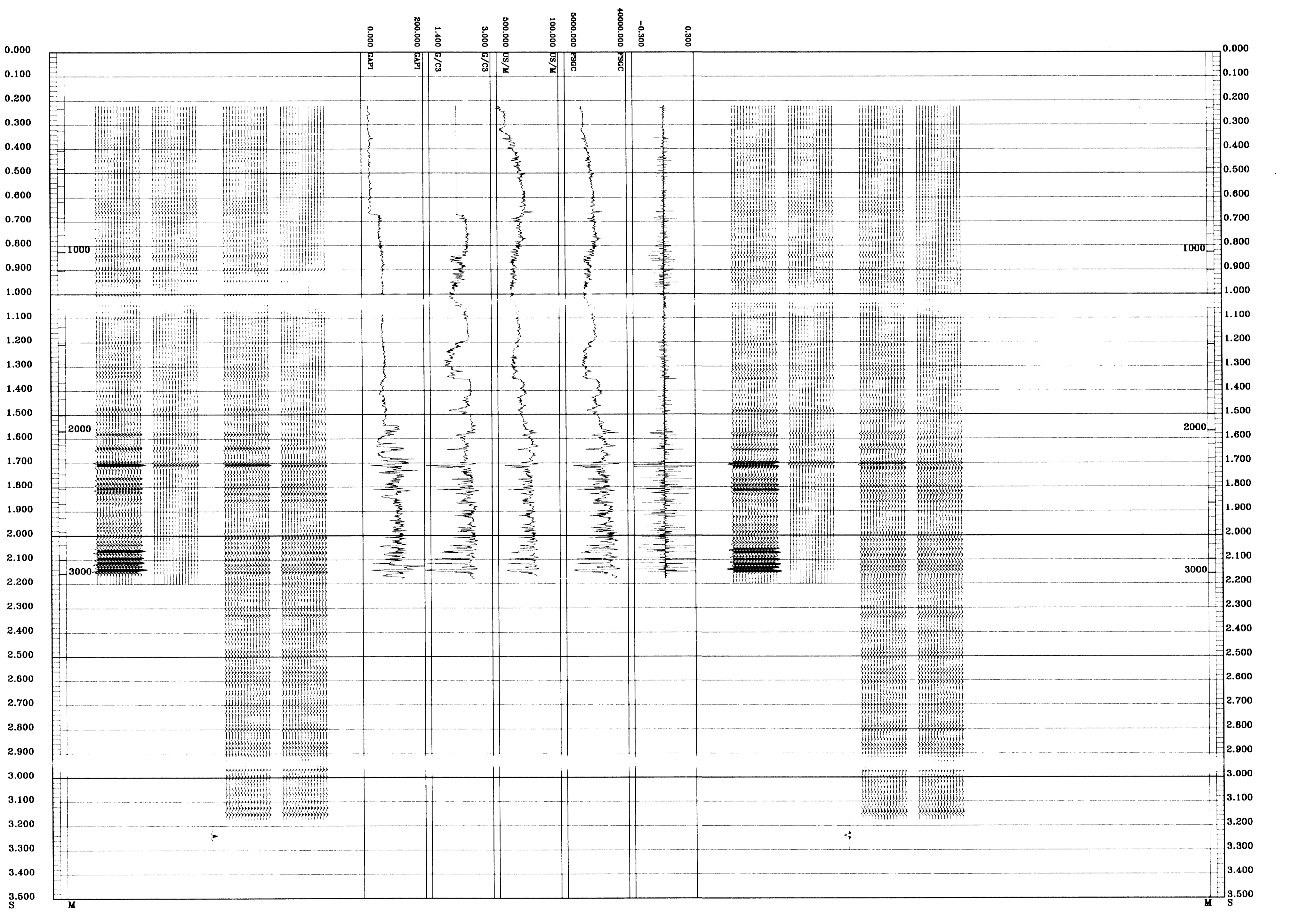
FOLD HERE

The well name, location and borehole reference data were furnished by the customer.

All interpretations are opinions based on inferences from electrical or other measurements and we cannot and do not guarantee the accuracy or correctness of any interpretations and we shall not, except in the case of gross or willful negligence on our part, be liable or responsible for any loss, costs, damages or expenses incurred or sustained by anyone resulting from any interpretations made by any of our officers, agents or employees. These interpretations are also subject to Clause 4 of our General Terms and Conditions as set out in our current Price Schedule.

## 45 HERTZ ZERO PHASE RICKER WAVELET

MULTIPLES ONLY REVERSE POLARITY
PRIMARIES AND MULTIPLES REVERSE POLARITY
PRIMARIES WITH TRANSMISSION LOSS REVERSE POLARITY
PRIMARIES REVERSE POLARITY
REFLECTION
ACOUSTIC IMPEDANCE
SONIC
DENSITY
GAMMA RAY
MULTIPLES ONLY NORMAL POLARITY
PRIMARIES AND MULTIPLES NORMAL POLARITY
PRIMARIES WITH TRANSMISSION LOSS NORMAL POLARITY
PRIMARIES NORMAL POLARITY



COMPANY ESSO AUSTRALIA LTD.  
 FIELD WILDCAT  
 WELL SAWBELLY-1  
 COUNTRY AUSTRALIA

