

PLATE 1: 2160 metres

Reflected Light

This plate shows asphaltic bitumen (dark brown) and oil (very pale brown) occurring in a sandy siltstone.

Field Dimensions 0.26 mm x 0.18 mm

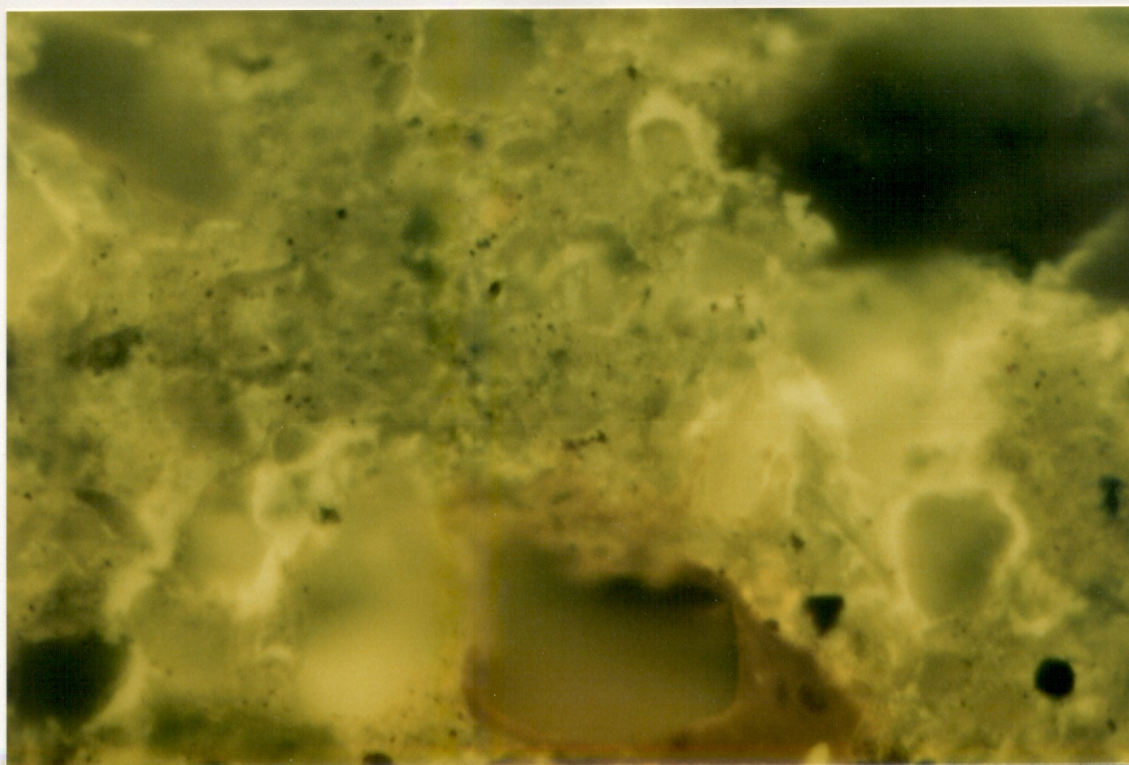


PLATE 2: 2160 metres

Fluorescence Mode

This is the same field as Plate 1 in fluorescence mode illustrating the moderate orange fluorescence of the asphaltic bitumen and the bright yellow-green fluorescence of the oil.

Field Dimensions 0.26 mm x 0.18 mm

DEPT. NAT. RES & ENV



PE906909