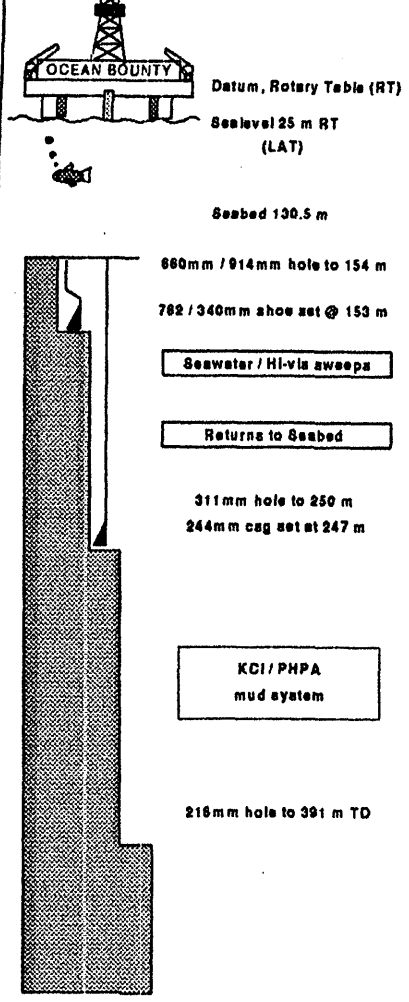




EAGLE BAY
RESOURCES N.L.
DEPT. NAT. RES & ENV
PE603052

INTEQ LOG SUITE

Formation Evaluation 1:500 Drilling Data Plot 1:2500
Pressure Data Plot 1:2530 Pressure Summary 1:2500



ABBREVIATIONS

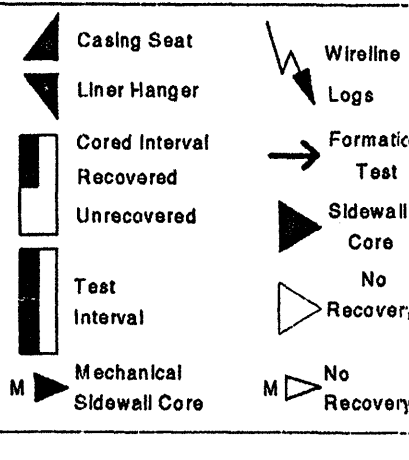
NB	New Bit	SG	Swab Gas
RB	Rerun Bit	FCG	Flow Check Gas
CB	Core Bit	FC	Filter Cake
WOB	Weight on Bit	SPP	Pump Pressure
RPM	Revs per Minute	V	Funnel Viscosity
FLC	Flow Check	F	Filtrate - API
GPM	Gallons per Minute	MW	Mud Weight sg
CR	Circulate Returns	PV	Plastic Viscosity
PR	Poor Returns	YP	Yield Point
NR	No Returns	Sol	Solids %
BG	Background Gas	Sd	Sand %
TG	Trip Gas	Cl	Chlorides
STG	Short Trip Gas	RM	Mud Resistivity
CG	Connection Gas	RWF	Filtrate Resistivity

LITHOLOGY SYMBOLS

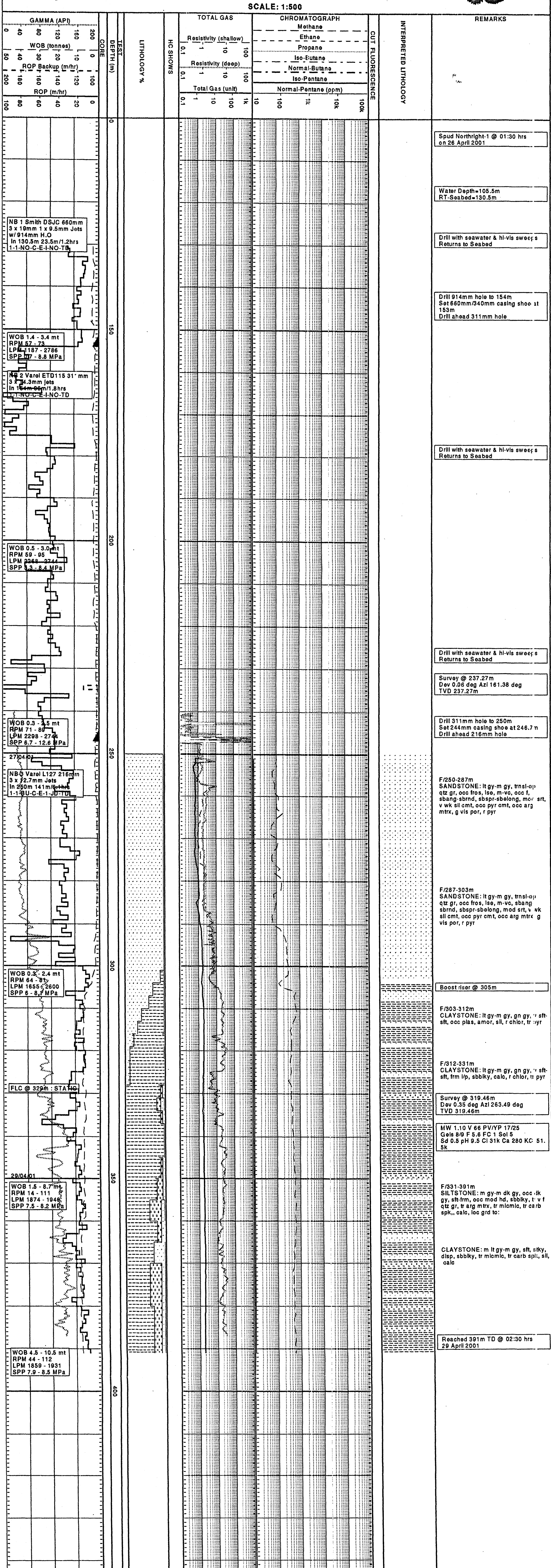
Company	Eagle Bay Resources N.L.
Well	Northright - 1
Permit	VIC/P-41
Region	Gippsland Basin, Offshore Victoria, Australia
Designation	Vertical Exploration
Datum	AMG Zone 55 (AGD 84)
Coordinates	037° 55' 57.754" S Lat 149° 08' 58.842" E Long
Spud date	26 April 2001
Spud depth	130.5m RT
Reference Elevation	RT 25 m above Sealevel LAT
Total Depth	391 mRT
Contractor	Diamond Offshore General Co.
Rig	MODU Ocean Bounty
Type	Semi-Submersible

LOG INTERVAL

Depth	130.5 mRT to 391 mRT
Date	26 April, 2001 - 29 April, 2001
Data Engineers	R. Tadiar, R. Tena
Mudloggers	Ajltoro, M. Ronen
Sample Technicians	R. Hatcher, E. Spence



FORMATION EVALUATION LOG Northright-1 SCALE: 1:500



GAMMA (API)	0 40 80 120 160 200	TEST	LITHOLOGY %	HC SHOWS	TOTAL GAS	CHROMATOGRAPH	INTERPRETED LITHOLOGY	REMARKS
WOB (tonnes)	0 20 40 60 80 100	DEPTH (m)			Resistivity (shallow)	Methane		
ROP Backup (m/hr)	0 20 40 60 80 100				Resistivity (deep)	Ethane		
ROP (m/hr)	0 20 40 60 80 100				Total Gas (unit)	Propane		
						Iso-Butane		
						Normal-Butane		
						Iso-Pentane		
						Normal-Pentane (ppm)		

Spud Northright-1 @ 01:30 hrs on 26 April 2001

Water Depth=105.5m
RT-Sealed=130.5m

Drill with seawater & hi-vis sweeps Returns to Sealed

Drill 914mm hole to 154m Set 660mm/840mm casing shoe at 153m Drill ahead 311mm hole

Drill with seawater & hi-vis sweeps Returns to Sealed

Drill with seawater & hi-vis sweeps Returns to Sealed

Survey @ 237.27m Dev 0.06 deg Azi 161.38 deg TVD 237.27m

Drill 311mm hole to 250m Set 244mm casing shoe at 246.7m Drill ahead 216mm hole

F/250-287m SANDSTONE: lt gy-m gy, trnsi-op qtz gr, occ fros, iso, m-vc, occ f, sbang-sbrnd, sbpr-sbelong, mod srt, v wk sil cmt, occ pyr cmt, occ arg mtr, g vis por, r pyr

F/287-303m SANDSTONE: lt gy-m gy, trnsi-op qtz gr, occ fros, iso, m-vc, sbang sbrnd, sbpr-sbelong, mod srt, v wk sil cmt, occ pyr cmt, occ arg mtr, g vis por, r pyr

Boost riser @ 305m

F/303-312m CLAYSTONE: lt gy-m gy, gn gy, v sft-sft, occ plas, amor, sil, r chlor, tr pyr

F/312-331m CLAYSTONE: lt gy-m gy, gn gy, v sft-sft, frm lp, sbbiky, calc, r chlor, tr pyr

Survey @ 319.46m Dev 0.35 deg Azi 263.49 deg TVD 319.46m

MW 1.10 V 66 PV/YP 1725 Gels 89 F 5.6 FC 1 Sol 5 Sd 0.5 pH 9.5 Cl 31K Ca 280 KC 51.5k

F/331-391m SILTSTONE: m gy-m dk gy, occ -lk gy, sft-frm, occ mod hd, sbbiky, t v f qtz gr, tr arg mtr, tr mlcmic, tr carb spk., calc, loc grd to:

CLAYSTONE: m lt gy-m gy, sft, stky, disp, sbbiky, tr mlcmic, tr carb spk, sil, calc

Reached 391m TD @ 02:30 hrs 29 April 2001