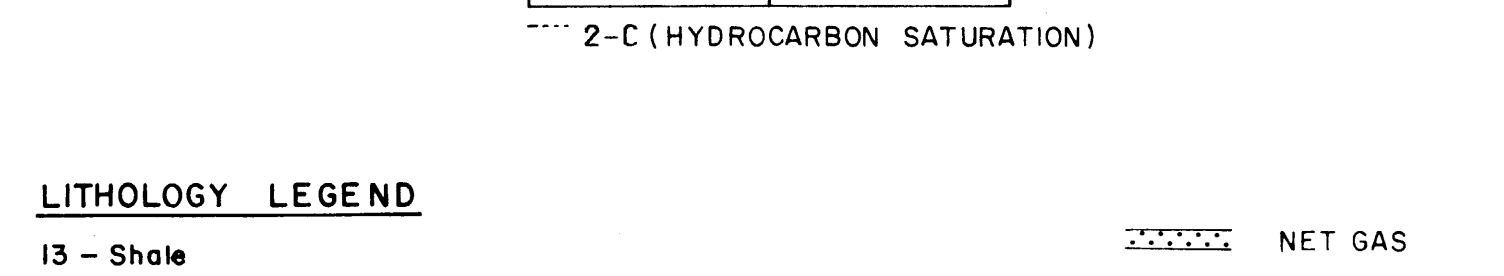
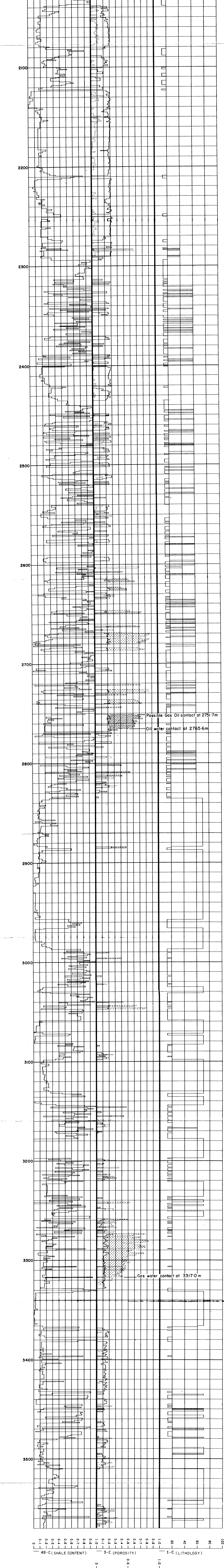
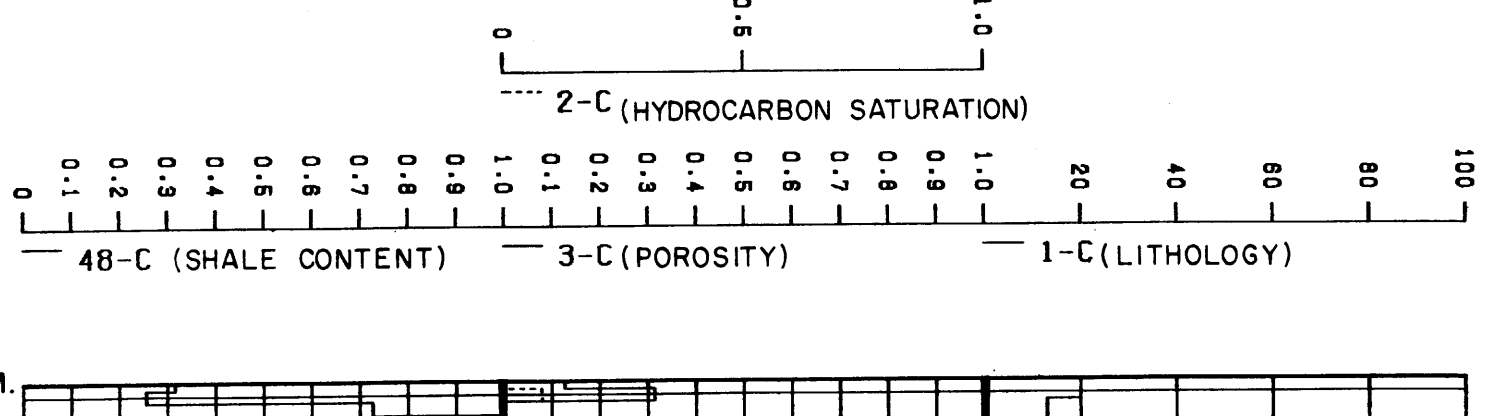


MANTA-I PETROPHYSICAL EVALUATION



LITHOLOGY LEGEND

- 13 - Shale
- 20 - Sand
- 40 - Dolomitic sandstone
- 60 - Coal
- 70 - Volcanics

TOTAL NET GAS 73.1m (cut offs: porosity 10% hydrocarbon saturation 30%)
 TOTAL NET OIL 28.3m (cut offs: porosity 13% hydrocarbon saturation 40%)

NET GAS (dotted pattern)
 NET OIL (diagonal lines pattern)

Completion Report Vol II
 SHELL-AUSTRALIA E.&P. OIL AND GAS.
 GIPPSLAND BASIN

MANTA - I
PETROPHYSICAL EVALUATION

Author: EPE/2 Date: June 1984
 Report No.: SDA 596 Drawing No.: 18855 Encl. 1