



WELL **MACKEREL NO. 3**  
 COMPANY **ESSO AUSTRALIA**  
 COUNTY **GIPPSLAND BASIN**  
 STATE **VICTORIA**

**LEGEND**  
 DEPTH CORRESPONDS TO DRILL  
 PIPE MEASUREMENTS.  
 NB NEW BIT  
 NCB NEW CORE BIT  
 DST DRILL STEM TEST  
 NR NO RETURNS  
 TG TRIP GAS  
 CO CIRCULATE OUT RETURNS

**LITHOLOGY**

SAND	GRANITE WASH	LIME STONE
SHALE	GYP ANHYDRITE	DOLOMITE

19 of 25  
**CHERT**  
 ▲▲▲▲  
 ▲▲▲▲  
**LIGNITE**  
 ■

**CUTTINGS ANALYSIS**  
 TOTAL GAS \_\_\_\_\_  
 METHANE \_\_\_\_\_  
 LIQUID HYDROCARBONS (C<sub>6+</sub>) \_\_\_\_\_

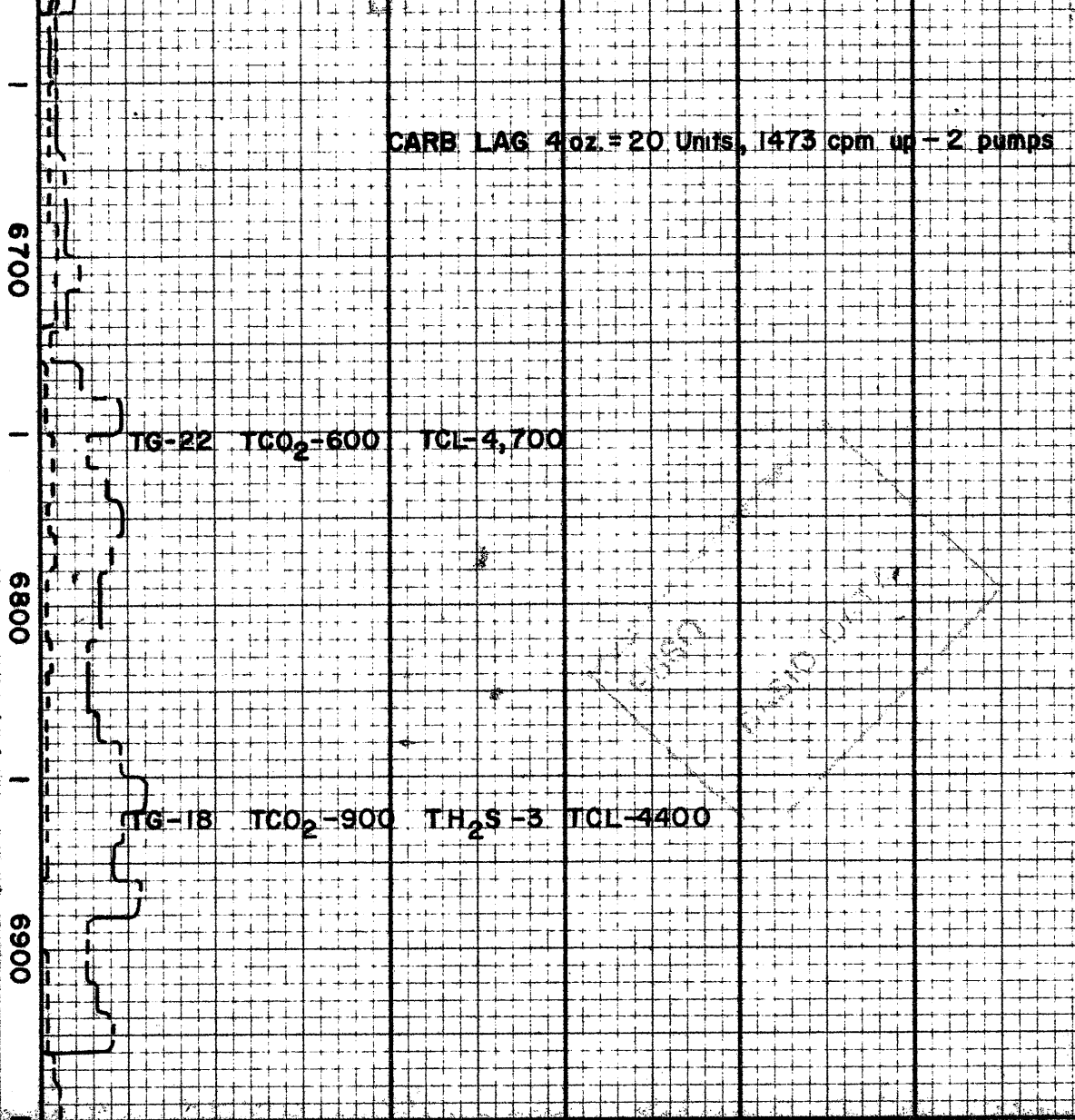
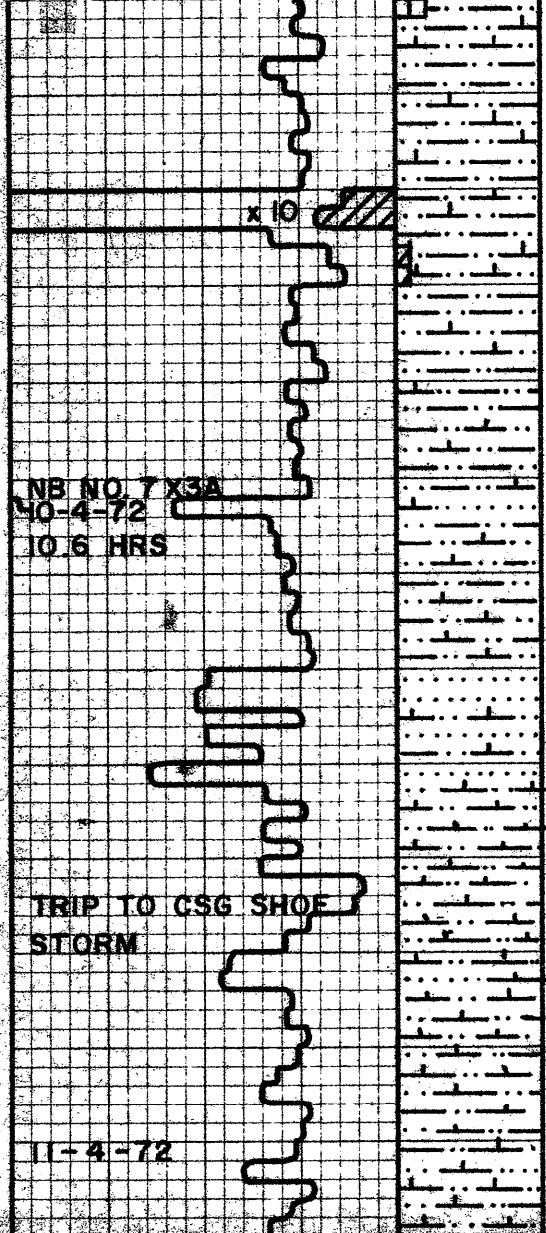
**DRILLING RATE**  
 FT. PER HR.  MIN. PER FT.  
 150 100 50  
 VISUAL POROSITY GST

**LITHOLOGY**

**ppm HYDROCARBONS IN MUD M=1000**

CO <sub>2</sub>	1.5M	3M	4.5M	C <sub>2</sub>	C <sub>3</sub>	C <sub>4</sub>	C <sub>5+</sub>
0	1M	5M	10M	0	2M	0	2M
OIL TSG							

OIL TSG 25 50 75  
 LIQUID HYDROCARBONS (C<sub>6+</sub>) \_\_\_\_\_



ABNT CLR/WH FREE V F GRS SD  
 ABNT LRG & SMALL FORAMS  
 ADD WT. ON BIT  
 MARL-A/A W/ TRS V LT BRN HD DOL  
 MARL-LT/MED GY-BRN V SILTY CALC TR PYR  
 MARL -A/A W/ MED/ GY-BRN CALC SH

DEPT. NAT. RES & ENV  
  
 PE604099