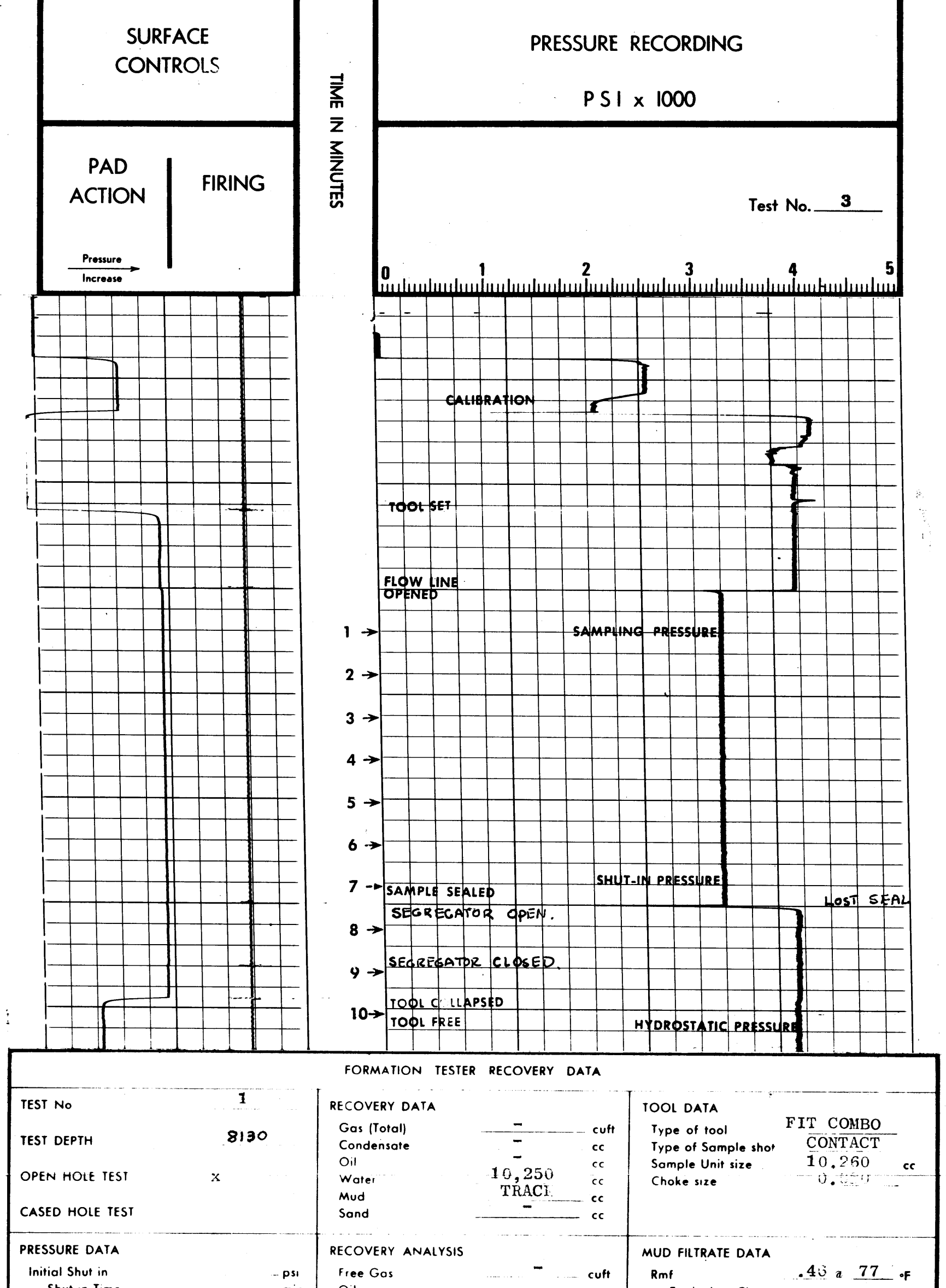
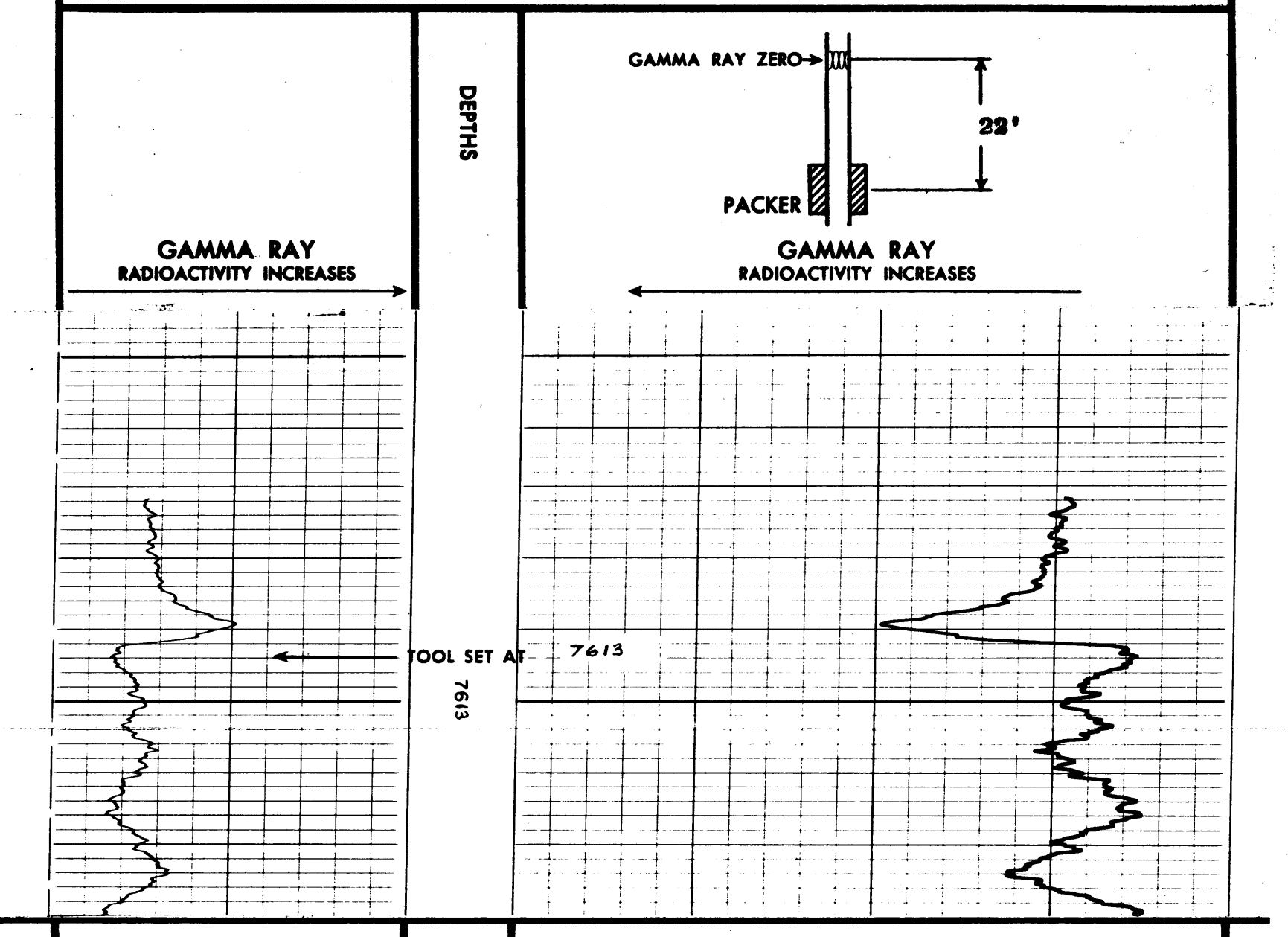
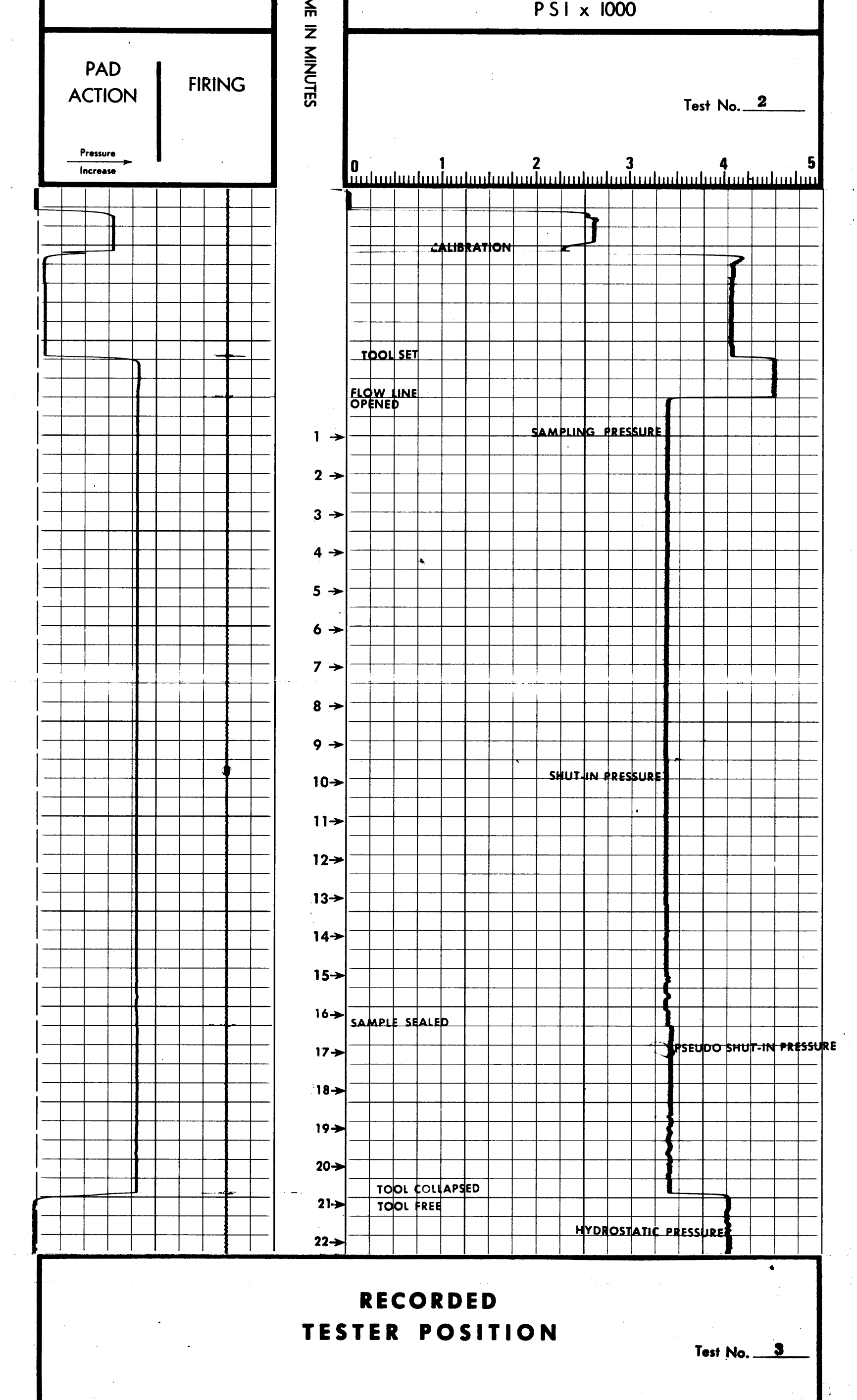
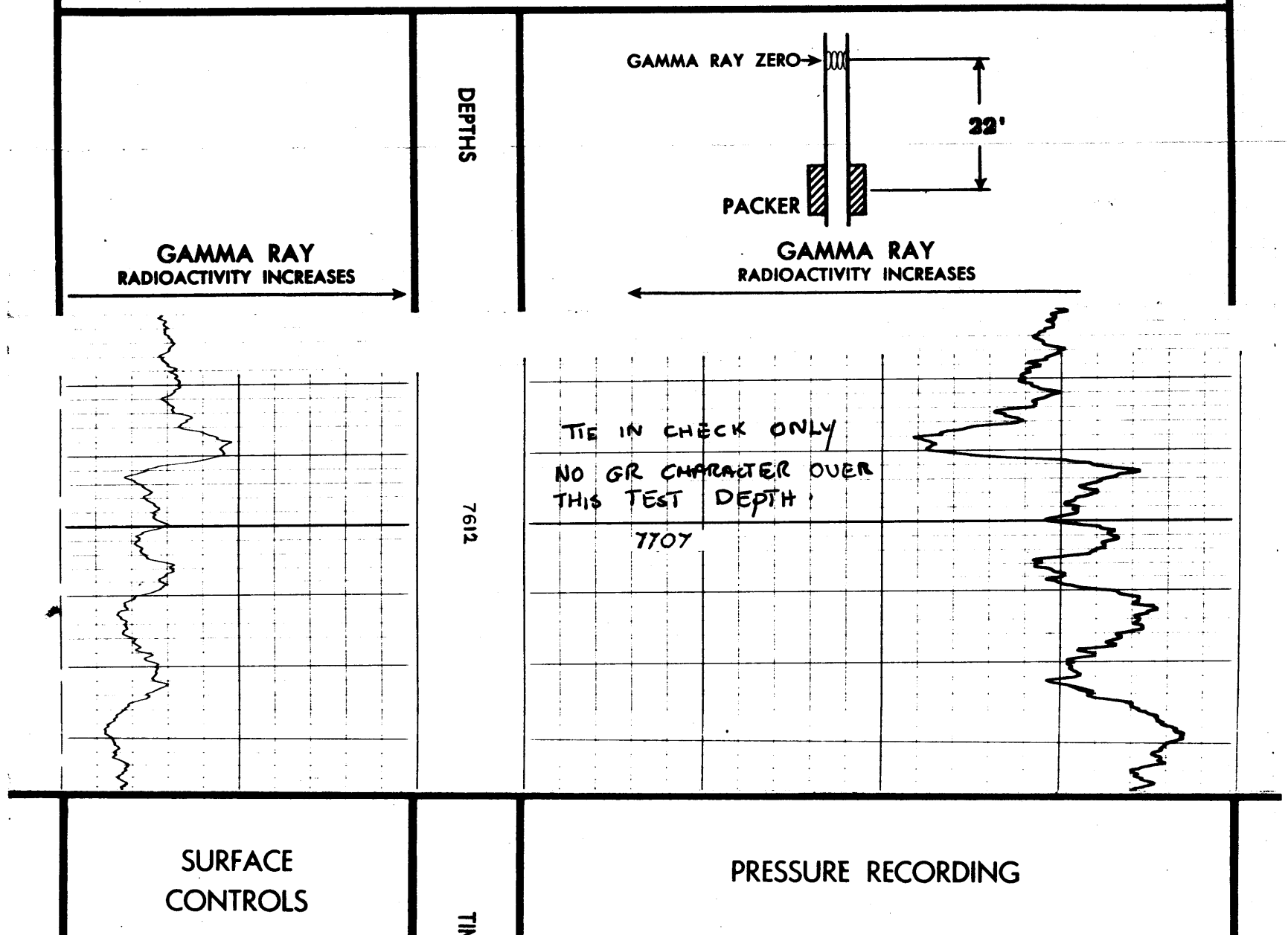
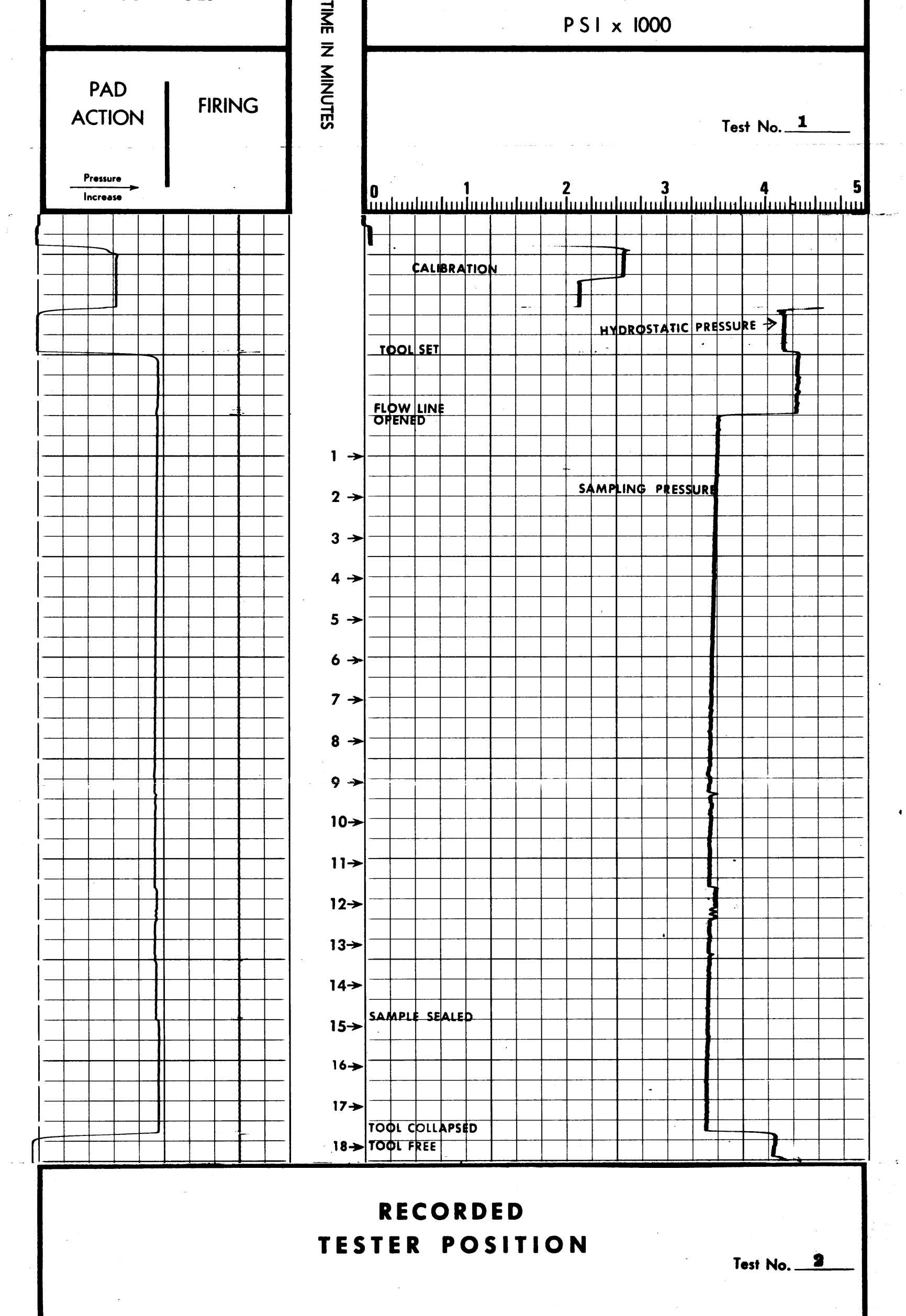
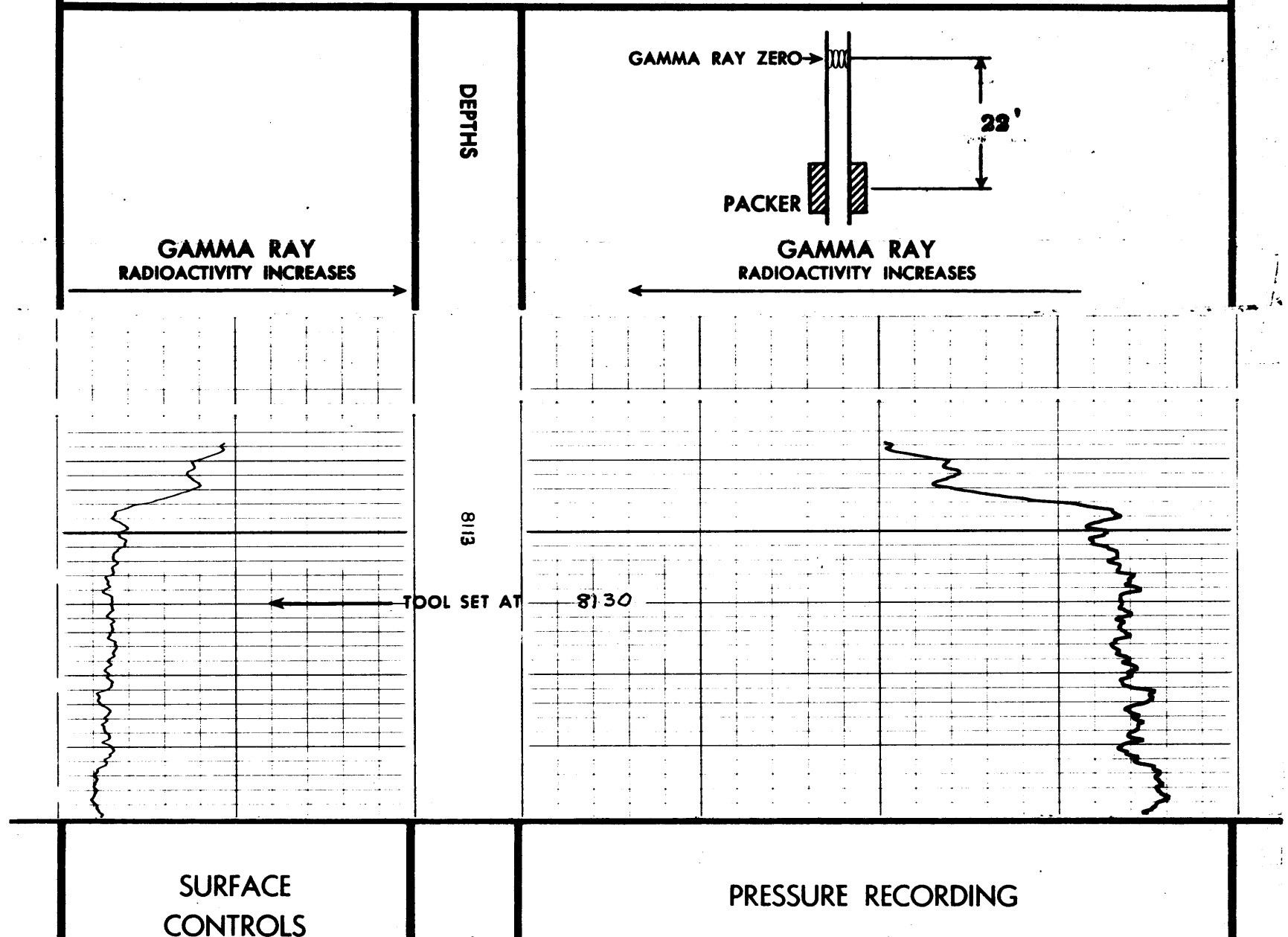


**FORMATION TESTER**

BERNARD REEFER  
P5902222

Run No.	ONE	Operating rig time	10 HOURS
Logging Truck No.	3411	OSUC	
F.T. Truck No.		F.T. Engineer	J. CHISHOLM
F.T. Operator	L. BROWNE	Location	SEA

REMARKS: HEWLETT PACKARD HIGH RESOLUTION PRESSURE TOOL RUN ON FIRST AND THIRD TEST WITH SUCCESS.



FORMATION TESTER RECOVERY DATA		
TEST No. 1	RECOVERY DATA	TOOL DATA
TEST DEPTH 8130	Gas (Total) - - - - - ccft	Type of tool FIT COMBO
OPEN HOLE TEST X	Condensate - - - - - cc	Type of Sample shot CONTACT
CASED HOLE TEST	Oil 10,250 cc	Sample Unit size 10,250 cc
	Water - - - - - cc	Choke size 0,020
	Mud TRACE cc	
	Sand - - - - - cc	
PRESSURE DATA	RECOVERY ANALYSIS	MUD FILTRATE DATA
Initial Shut in - - - - - psi	Free Gas - - - - - cuft	Rmf .46 @ 77 -F
Shut in Time 3512 min	Oil - - - - -	Equivalent Cl - - - - - ppm
Sampling 6 min	API Gravity - - - - - -F	Rw - - - - - -F
Sampling Time 3380 min	GOR - - - - -	Equivalent Cl - - - - - ppm
Final Shut in 8 min	Water .26 @ 73 -F	
Shut in Time 4150 min	Rif (Filtered) 16,500 -F	REMARKS
Hydrostatic 0 psi	Equivalent Cl 10,250 ppm	Sample Galvo drifting at end duo to weak battery in panel (AGNEW HP GAUGE RUN)
Surface Chamber 0 psi	No. 3, 44 ppm	
FORMATION TESTER RECOVERY DATA		
TEST No. 2	RECOVERY DATA	TOOL DATA
TEST DEPTH 7707	Gas (Total) - - - - - ccft	Type of tool FIT COMBO
OPEN HOLE TEST X	Condensate - - - - - cc	Type of Sample shot CONTACT
CASED HOLE TEST	Oil 10,250 cc	Sample Unit size 10,250 cc
	Water - - - - - cc	Choke size 0,020
	Mud TRACE cc	
	Sand - - - - - cc	
PRESSURE DATA	RECOVERY ANALYSIS	MUD FILTRATE DATA
Initial Shut in - - - - - psi	Free Gas - - - - - cuft	Rmf .46 @ 77 -F
Shut in Time 3375 min	Oil - - - - -	Equivalent Cl - - - - - ppm
Sampling 9 min	API Gravity - - - - - -F	Rw - - - - - -F
Sampling Time 3380 min	GOR - - - - -	Equivalent Cl - - - - - ppm
Final Shut in 1 min	Water .5 @ 74 -F	
Shut in Time 3975 min	Rif (Filtered) 6,300 -F	REMARKS
Hydrostatic 0 psi	Equivalent Cl 10,250 ppm	No Agnew HP Gauge this run.
Surface Chamber 0 psi	No. 3, 48 ppm	
FORMATION TESTER RECOVERY DATA		
TEST No. 3	RECOVERY DATA	TOOL DATA
TEST DEPTH 7613	Gas (Total) - - - - - ccft	Type of tool FIT COMBO
OPEN HOLE TEST X	Condensate - - - - - cc	Type of Sample shot CONTACT
CASED HOLE TEST	Oil 10,250 cc	Sample Unit size 10,250 cc
	Water - - - - - cc	Choke size 0,020
	Mud TRACE cc	
	Sand - - - - - cc	
PRESSURE DATA	RECOVERY ANALYSIS	MUD FILTRATE DATA
Initial Shut in - - - - - psi	Free Gas - - - - - cuft	Rmf .46 @ 77 -F
Shut in Time 3250 min	Oil - - - - -	Equivalent Cl - - - - - ppm
Sampling 6 min	API Gravity - - - - - -F	Rw - - - - - -F
Sampling Time 3250 min	GOR - - - - -	Equivalent Cl - - - - - ppm
Final Shut in 1 min	Water .5 @ 74 -F	
Shut in Time 3975 min	Rif (Filtered) 6,300 -F	REMARKS
Hydrostatic 0 psi	Equivalent Cl 10,250 ppm	SEGREGATOR RUN BUT LOST SEAL WHEN OPENED.
Surface Chamber 0 psi	No. 3, 48 ppm	

COMPANY: ESSO AUSTRALIA LTD.  
WELL: KINGFISH No. 6.  
FIELD: KINGFISH  
COUNTRY: AUSTRALIA STATE: VICTORIA

**Schlumberger**

**FORMATION TESTER**