

Form L-30 Graphing Item Dimensions
1 FOOT = 240 FEET



Grapholog

CORE LABORATORIES, INC.

DEPT. NAT. RES & ENV
PE601488

COMPANY **ESSO STANDARD OIL (AUSTRALIA) LTD.**
WELL **GROPER 2**
FIELD **VICTORIA**
COUNTY **VICTORIA** STATE **AUSTRALIA**
LOCATION **38° 58' 40" S. LAT. - ELEVATION 31' KB**
147° 14' 12" E. LONG.

DEPTH LOGGED, FROM **1515** TO **2870** FT.
DATE LOGGED **19 SEPTEMBER 1969**
CREW CHIEF **MIDDLETON** FILE NO. **FL-155-171**
DRG. FLUID **SEA WATER** TO **1694** FT.
GEL SPERSENE/XP20 1694 TO **2870** FT.

These analyses, opinions or interpretations are based on observations and material supplied by the client to whom, and for whose custody and confidential use, this report is made. The interpretations or opinions expressed represent the best judgment of Core Laboratories, Inc. (all errors and omissions excepted) but Core Laboratories, Inc. and its officers and employees, assume no responsibility and make no warranty or representation as to the productivity, proper operation, or performance of any oil, gas or other mineral well or used in connection with such report is used or relied upon.

LEGEND

ABBREVIATIONS

NB = NEW BIT
NCB = NEW CORE BIT
CD = CIRCULATED OUT
DST = DRILL STEM TEST
LAT = LOGGED AFTER TRIP
TG = TRIP GAS
NR = NO RETURNS
DS = DIRECTIONAL SURVEY
DC = DEPTH CORRECTION
DEPTHS CORRESPOND TO DRILL PIPE MEASUREMENTS
MEASURED FROM
KELLY BUSHING

RESISTIVITY, OHM-METERS

Rm = MUD
Rmc = MUD CAKE
Rmf = MUD FILTRATE

MUD DATA

CK = CAKE THICKNESS 32nds
V = VISCOSITY API SECONDS
F = FILTRATE API CC'S
W = WEIGHT (LBS/US GAL)
S = SALINITY, ppm Cl NaCl

LITHOLOGY

SAND: SAND, SALT, COAL, CALCARENITE, GRANITE, MUDSTONE

CONG: CONG., CLAY, DOLOMITE, CHERT, MARL, SILTSTONE

ANHYDRITE OR GYPSUM: ANHYDRITE OR GYPSUM, SHALE, LIMESTONE

HYDROCARBON ANALYSIS

CHROMATOGRAPHIC		OIL SHOW	HOT WIRE	
Drilling Mud Gas			CO ₂	
Methane — 1 —	Butane — 4 —		Drilling Mud Gas	
Ethane — 2 —	Pentane — 5 —		H ₂ S	
Propane — 3 —	Hexane — 6 —		Drill Cuttings Gas	
Calibration:			Calibration:	
1% Methane = 5000 PPM			1% Methane = 50 UNITS	
1% Ethane = 5000 PPM				
1% Propane = 5000 PPM				
1% Butane = 5000 PPM				

REMARKS

FORMATION DESCRIPTION,
MUD DATA,
DRILL STEM TESTS, etc.

VERTICAL SCALE
2" = 100'

CASING RECORD

30" SET AT 381'
9 5/8" SET AT 1498'

1520'-2250'

CALCARENITE: WH TO PINK, UNCONSOL, FINE TO MED GR FOSSILS, SLI GLAUC.

SANDSTONE: CLR QTZ CR, UNCONSOL, MED TO CRSE GR, WELL RNDED MOD SORT.

MUDSTONE: GRN TO CY SOFT TO MED HD, SLI CALC, FOSS, GLAUC.

CARBIDE CHECK

DEPTH = 1911'
CARBIDE = 250 GMS
HOT WIRE = 6 UNITS
P.O.D. = 1430PPM
C₃
LAG=19 MIN/55RPM.
ONE PUMP ON HOLE.

MUD DATA

DEPTH = 2120'
WY = 11.8 PV = 23
V = 51 Yd = 14
F = 10.2 Ck = 2
IG = 7 10G = 12
SD = 1% SEL = 17
PH = 11.5 ALK = 0.85
CL = 9100 CA = 160

2250'-2480'

MARL: WH, BLOCKY, STICKY, V CALC, SLI GLAUC.

MUDSTONE: GRN, SOFT TO MED HD, FOSS, SLI CALC, GLAUC.

CORE NO. 1
2411'-2415' Rec. 0

CORE NO. 2
2415'-2441' Rec. 0

CORE NO. 3
2441'-2458' Rec. 17

2480'-2670'

SANDSTONE: CLR TO WH, UNCONSOL, CRSE - MED GR, SUBRNDED TO WELL RNDED, MOD TO WELL SORT, SLI PYRITIC.

2670'-2800'

CLAY: PALE RED BRN STICKY, BLOCKY, SOFT NONCALC.

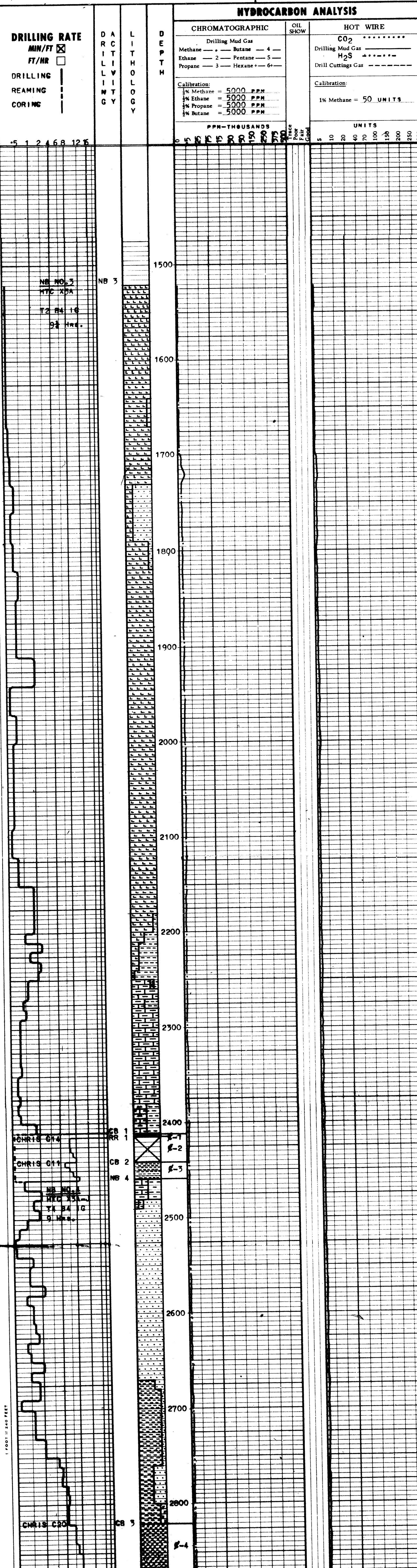
SANDSTONE: WH-LT CY CONSOL, FINE GR, SUB ANG, CALC, W/RED CR CY GRNS, HD QTZITE.

2800'-2820'

GRANITE: DK RED BRN V FINE CR, PINK FELDSPAR AND QTZ.

CORE NO. 4
2820'-2870' Rec. 50

TOTAL DEPTH



1 FOOT = 240 FEET

1 FOOT = 240 FEET