



PE603278

CL 874 HEAD



GEO-PLOT

CORE LABORATORIES, INC.

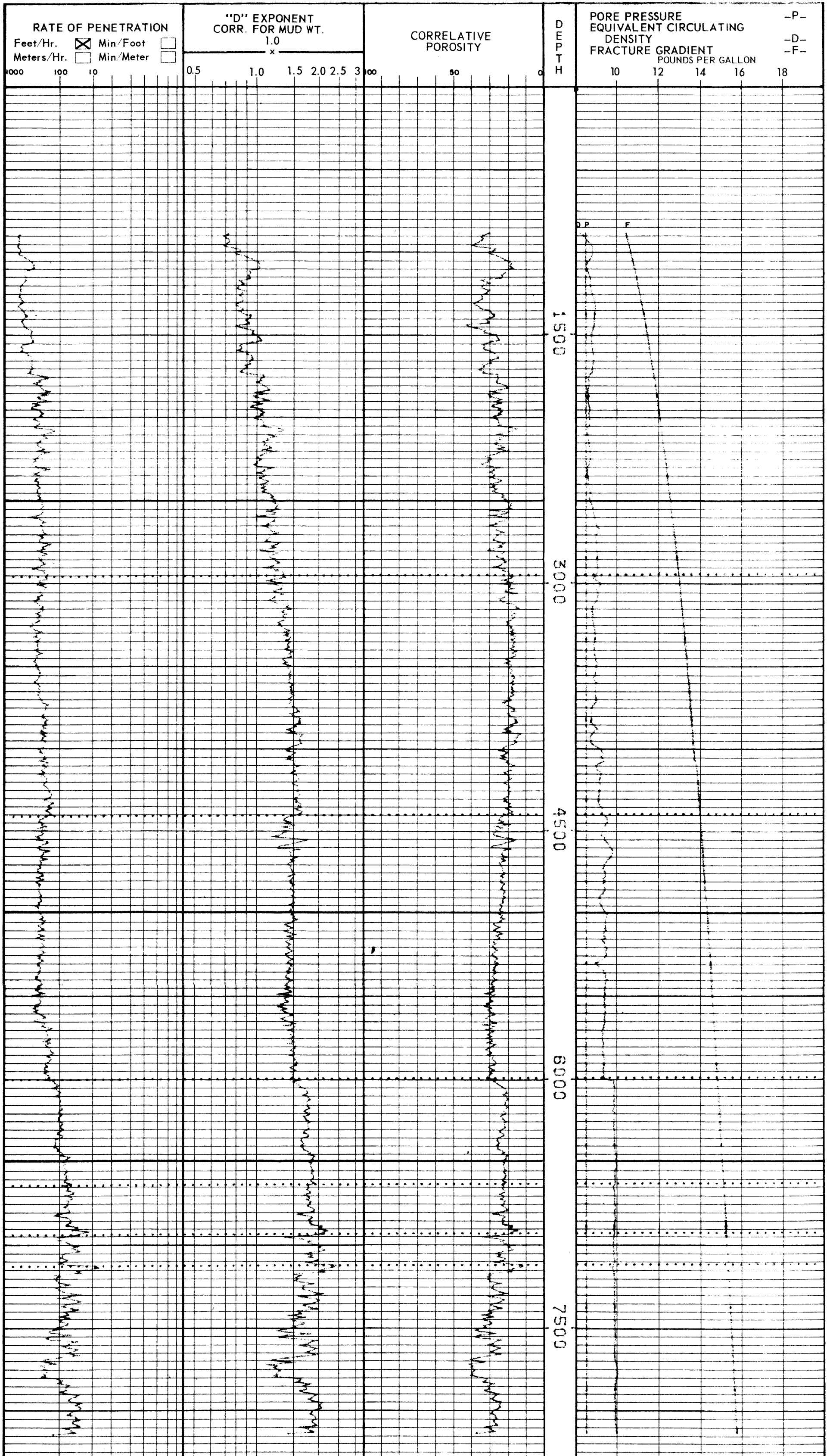
COMPANY ESSO AUSTRALIA, LTD.
 WELL FLOUNDER # 6
 FIELD STEP-OUT WELL, GIPPSLAND BASIN
 COUNTY AUSTRALIA STATE VICTORIA
 LOCATION LAT: 38° 19' 6.97" S ELEVATION RTB-SF 381'
LONG: 148° 26' 8.41" E

DEPTH LOGGED FROM 881' TO 8214' 6"
 DATE LOGGED 14th JULY 1977 - 1st AUGUST 1977
 CREW CHIEF LA ROSA FILE NO. 1010/176
 DRG. FLUID SEA WATER SEAFLOOR TO 881'
SEA WATER/GEL 881' TO 2956'
SBERSENE/FRESHWATER/GEL 2956' - 8214.5'

These analyses, opinions or interpretations are based on observations and material supplied by the client to whom, and for whose exclusive and confidential use, this report is made. The interpretations or opinions expressed represent the best judgment of Core Laboratories, Inc. (all errors and omissions excepted), but Core Laboratories, Inc. and its officers and employees, assume no responsibility and make no warranty or representations as to the productivity, proper operation, or profitability of any oil, gas or other mineral well or sand in connection with which such report is used or relied upon.

EXTENDED SERVICE LOGGING

VERTICAL SCALE
1 : 6000



4CH1