

15/25



WELL **FLOUNDER NO. 4**  
COMPANY **ESSO AUSTRALIA LTD.**  
COUNTY **GIPPSLAND BASIN**  
STATE **VICTORIA**

WELL LOGGING SERVICE

**LEGEND**  
DEPTH CORRESPONDS TO DRILL  
PIPE MEASUREMENTS.  
NB NEW BIT  
NCB NEW CORE BIT  
DST DRILL STEM TEST  
NR NO RETURNS  
TG TRIP GAS  
CO CIRCULATE OUT RETURNS

**LITHOLOGY**  
SAND GRANITE WASH LIME STONE   
SHALE GYP. ANHYDRITE DOLOMITE   
CHERT   
LIGNITE

**CUTTINGS ANALYSIS**  
TOTAL GAS \_\_\_\_\_  
METHANE \_\_\_\_\_  
LIQUID HYDROCARBONS  
(C<sub>6+</sub>) \_\_\_\_\_ 6+ \_\_\_\_\_

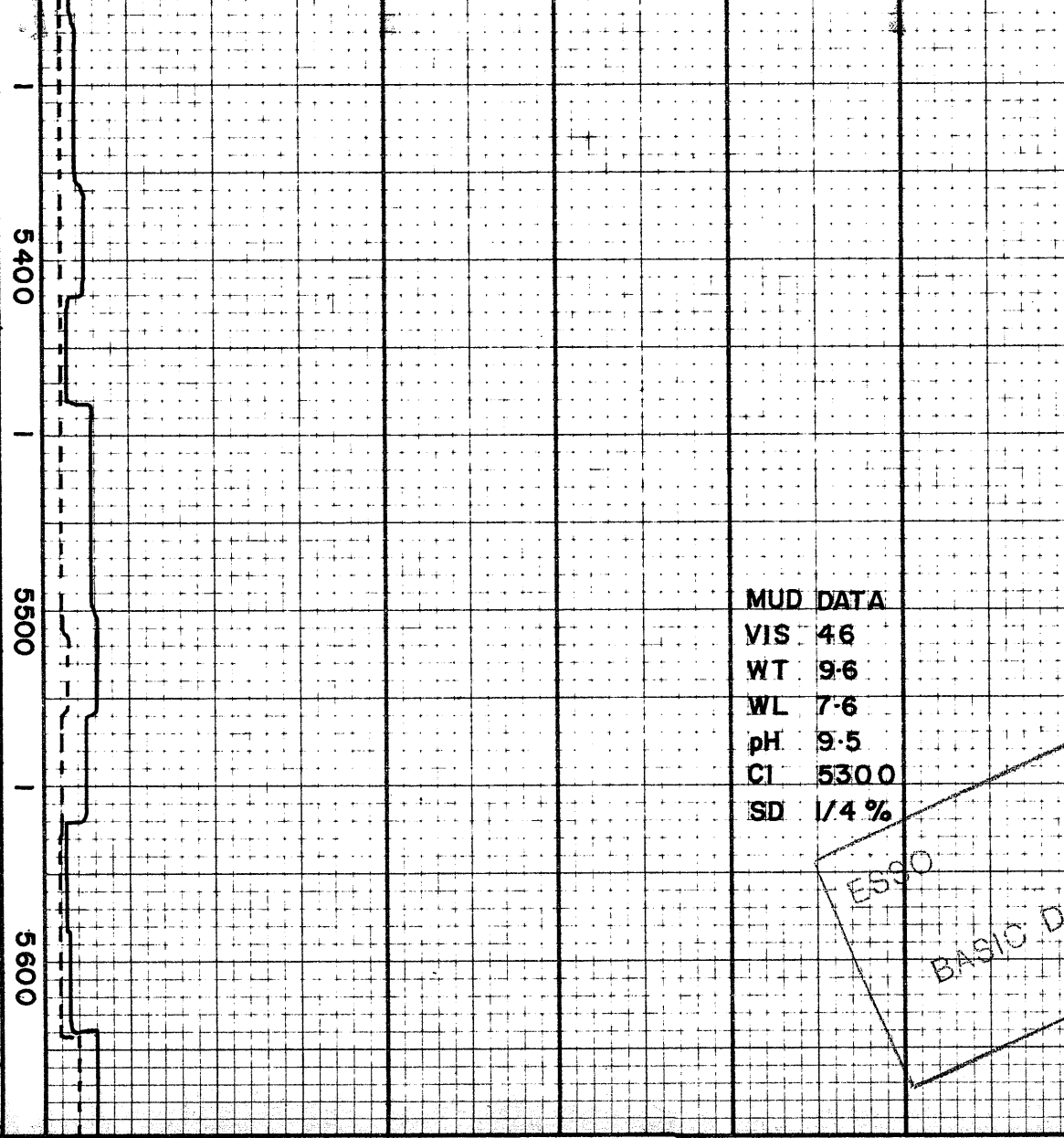
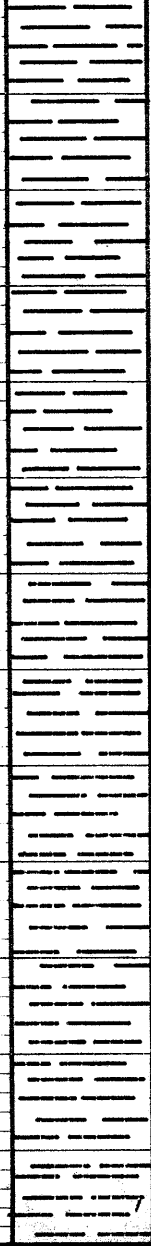
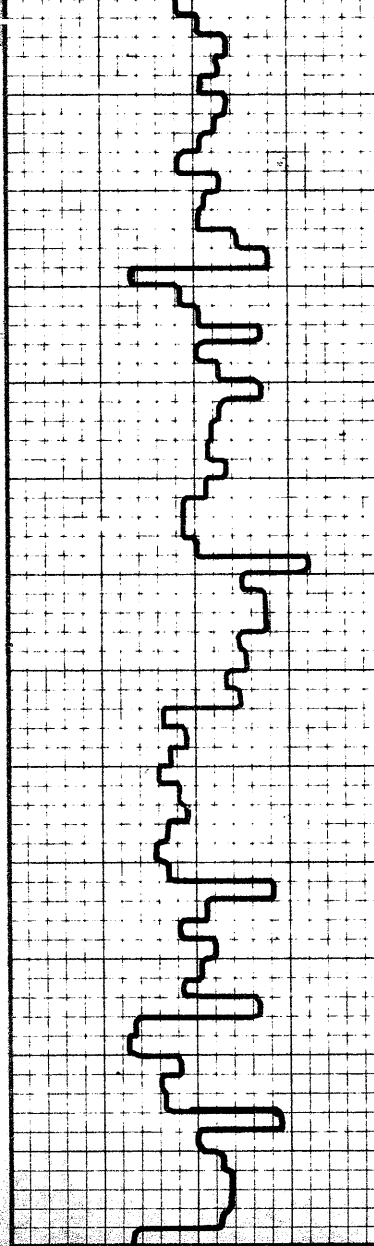
**ppm HYDROCARBONS IN MUD M=1000**

**DRILLING RATE**  
 FT. PER HR.  MIN. PER FT.  
150 100 50  
VISUAL POROSITY  
GST

**LITHOLOGY**

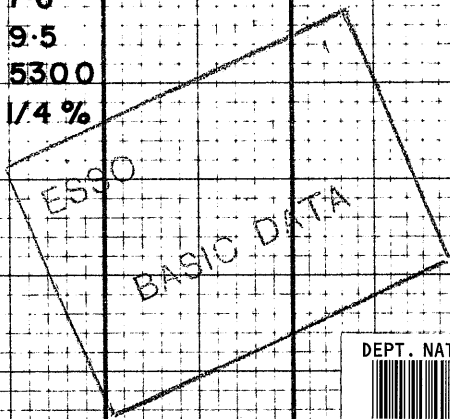
OIL TSG  
C<sub>1</sub> 5M 10M 15M  
25 50 75  
C<sub>2</sub> 1M  
2500  
C<sub>3</sub> 1M  
25  
C<sub>4</sub> 1M  
C<sub>5+</sub> 1M

OIL TSG  
25 50 75



SH: MED. GY, SFT-FM  
SILTY, CALC

**MUD DATA**  
VIS 46  
WT 9.6  
WL 7.6  
pH 9.5  
CI 530.0  
SD 1/4 %



DEPT. NAT. RES & ENV  
  
PE603254