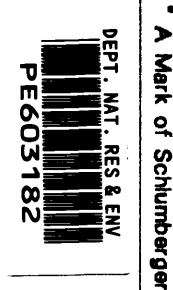


GEOGRAM*

(Synthetic Seismogram)



Company: ESSO AUSTRALIA LTD
 Well: CONGER #1
 Field: WILDCAT
 Country: AUSTRALIA
 Reference No: 56326
 Date Logged: 15-MAR-89
 Location: 038 21 27.21' S
 Elevations: KB: 2100 DF: 20.70 GL: -65.00
 Permanent Datum: MSL
 Depth Units: METRES

LOG INFORMATION

FIELD RECORDING: Engineer: Y.G.ZHANG Location: Program Version: 30.4
 COMPUTATION: Analyst: M. SANDERS Centre: SYD Barline: 16300X3
 ELEVATION ABOVE MEAN SEA LEVEL
 Logging Datum: 2100
 Sismic Reference Datum: 0.00

Sonic Calibration By Check Shots: YES Sonic Edited By Analyst: YES
 Two-Way Time Sample Interval: 2 ms Environment: onshore

True Vertical Depth Corrections Applied:
 Source of True Vertical Depth Data:
 Maximum Hole Deviation:

Run	Date	Tool Type	Bit Size/ Depth	Casing Size/ Depth	Top Depth	Bottom Depth
VSP		Gun	Hydro	Gun	Hydro	Gun
Run	Date	Offset	Offset	Elevation	Elevation	Asimuth
1	15-MAR-89	40 M	40 M	9 M BELOW MSL	14 M BELOW MSL	

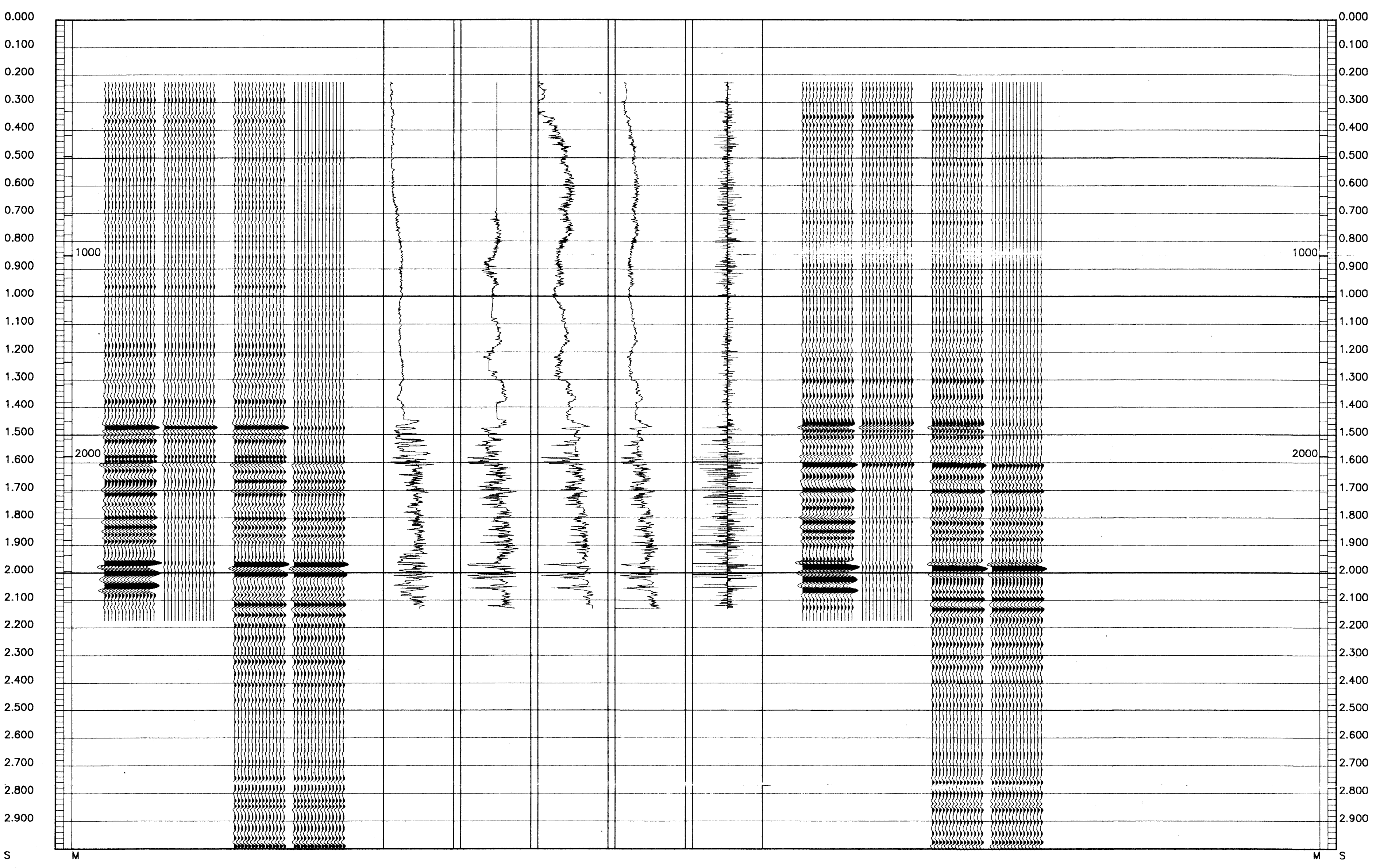
GEOGRAM MODEL ASSUMPTIONS

Equal time slice model of horizontal plane layers.
 Plane acoustic waves at normal incidence.
 No intrinsic attenuation.
POLARITY
 An upgoing wave, reflected by an increase in acoustic impedance with depth, is displayed as a white trough under normal polarity.
SIGNATURES
 All signatures displayed in the Geogram results correspond to a wavelet convolved with a reflection coefficient of -0.5 (A decrease in acoustic impedance with depth).
REMARKS
 25 HERTZ ZERO PHASE

The well name, location and borehole reference data were furnished by the customer.
 All interpretations are opinions based on inferences from electrical or other measurements and we cannot, and do not guarantee the accuracy or correctness of any interpretations, and we shall not, except in the case of gross or willful negligence on our part, be liable or responsible for any loss, costs, damages or expenses incurred or sustained by anyone resulting from any interpretations made by any of our officers, agents or employees. These interpretations are also subject to Clause 4 of our General Terms and Conditions as set out in our current Price Schedule.

** GEOGRAM **
 25 HERTZ ZERO PHASE
 RICKER WAVELET
 CONGER - 1

MULTIPLES ONLY REVERSE POLARITY	50000.000 FSSC
PRIMARIES AND MULTIPLES REVERSE POLARITY	50.000 US/F
PRIMARIES WITH TRANSMISSION LOSS REVERSE POLARITY	150.000 US/F
PRIMARIES REVERSE POLARITY	2.500 G/C3
REFLECTION	1.500 G/C3
ACOUSTIC IMPEDANCE	200.000 GPP
SONIC	0.000 GPP
DENSITY	
GAMMA RAY	
MULTIPLES ONLY NORMAL POLARITY	
PRIMARIES AND MULTIPLES NORMAL POLARITY	
PRIMARIES WITH TRANSMISSION LOSS NORMAL POLARITY	
PRIMARIES NORMAL POLARITY	



COMPANY ESSO AUSTRALIA LTD
 FIELD WILDCAT
 WELL CONGER #1
 COUNTRY AUSTRALIA

