



Company: Esso Australia Ltd.

Well: B-17
Field: Bream B
Rig: Prod4
Country: Australia

Prod4
Bream B
Gippsland
B-17
Esso Australia Ltd.

2" HSD Powerjet Omega Mwpt Perforation Record

LOCATION	
Gippsland Basin Bass Strait	Elev.: K.B. -63 m G.L. D.F. 47.17 m
Permanent Datum: _____	M.S.L. _____
Log Measured From: _____	D.F. _____
Drilling Measured From: _____	D.F. _____
State: Victoria	Max. Well Deviation 70 deg
	Longitude 147 50'16.98"E
	Latitude 038 31'11.10"S

Logging Date	30-Sep-2006
Run Number	One
Depth Driller	4450 m
Schlumberger Depth	3925 m
Bottom Log Interval	3925 m
Top Log Interval	3875 m
Casing Fluid Type	Production Fluids
Salinity	
Density	
Fluid Level	
BIT/CASING/TUBING STRING	
Bit Size	8.500 in
From	
To	
Casing/Tubing Size	7.000 in
Weight	26 lbm/ft
Grade	L-80
From	27 m
To	4913 m
Maximum Recorded Temperatures	207 degf
Logger On Bottom	30-Sep-2006
Unit Number	889
Recorded By	G Wright
Witnessed By	B White

PVT DATA		Run 1
Oil Density		
Water Salinity		
Gas Gravity		
Bo		
Bw		
1/Bq		
Bubble Point Pressure		
Bubble Point Temperature		
Solution GOR		
Maximum Deviation	70 deg	
CEMENTING DATA		
Primary/Squeeze		Primary
Casing String No		
Lead Cement Type		
Volume		
Density		
Water Loss		
Additives		
Tail Cement Type		
Volume		
Density		
Water Loss		
Additives		
Expected Cement Top		
Logging Date		
Run Number		
Depth Driller		
Schlumberger Depth		
Bottom Log Interval		
Top Log Interval		
Casing Fluid Type		
Salinity		
Density		
Fluid Level		
BIT/CASING/TUBING STRING		
Bit Size		
From		
To		
Casing/Tubing Size		
Weight		
Grade		
From		
To		
Maximum Recorded Temperatures		
Logger On Bottom		
Unit Number		
Recorded By		
Witnessed By		

DEPTH SUMMARY LISTING

Depth System Equipment

Date Created: 23-SEP-2006 10:10:51

Depth Measuring Device	Tension Device	Logging Cable
Type: IDW-EB	Type: CMTD-B/A	Type: 2-32ZT
Serial Number: 6373	Serial Number: 949	Serial Number: 24425
Calibration Date: 28-SEP-2006	Calibration Date: 28-SEP-2006	Length: 6700.11 M
Calibrator Serial Number: 1009	Calibrator Serial Number: 1174	Conveyance Method: Wireline
Calibration Cable Type: 2-32ZT	Calibration Gain: 1.01	Rig Type: Offshore_Fixed
Wheel Correction 1: -2	Calibration Offset: 195.00	
Wheel Correction 2: -2		

Depth Control Parameters

Log Sequence: Subsequent Log In the Well
 Reference Log Name: Solar composite.
 Reference Log Run Number: 1
 Reference Log Date:

Depth Control Remarks

1. Correlated to Solar composite log supplied with program.
2. IDW-EB 6373 used as primary depth control.
3. Z-chart used as back-up.
- 4.
- 5.
- 6.

DISCLAIMER

THE USE OF AND RELIANCE UPON THIS RECORDED-DATA BY THE HEREIN NAMED COMPANY (AND ANY OF ITS AFFILIATES, PARTNERS, REPRESENTATIVES, AGENTS, CONSULTANTS AND EMPLOYEES) IS SUBJECT TO THE TERMS AND CONDITIONS AGREED UPON BETWEEN SCHLUMBERGER AND THE COMPANY, INCLUDING: (a) RESTRICTIONS ON USE OF THE RECORDED-DATA; (b) DISCLAIMERS AND WAIVERS OF WARRANTIES AND REPRESENTATIONS REGARDING COMPANY'S USE OF AND RELIANCE UPON THE RECORDED-DATA; AND (c) CUSTOMER'S FULL AND SOLE RESPONSIBILITY FOR ANY INFERENCE DRAWN OR DECISION MADE IN CONNECTION WITH THE USE OF THIS RECORDED-DATA.

OTHER SERVICES1
 OS1: None

REMARKS: RUN NUMBER 1

- Log correlated to ExxonMobil composite supplied with program.
- Maximum well deviation = 70 degrees at 3059m MDKB.
- 2" HSD Powerjet Omega gun used for this perforation.
- Interval perforated was 3906m to 3910m MDKB.
- Well was shot overbalanced as there is no gaslift available.
- Prior to perforating SBHP = 3364 psia, SBHT = 206 degf.
- After perforating SBHP = 2841 psia, SBHT = 207 degf.

Crew : John Light & Andy Hall.

RUN 1

SERVICE ORDER #:
PROGRAM VERSION:
FLUID LEVEL:

Ausl06328182
14C0-302

EQUIPMENT DESCRIPTION

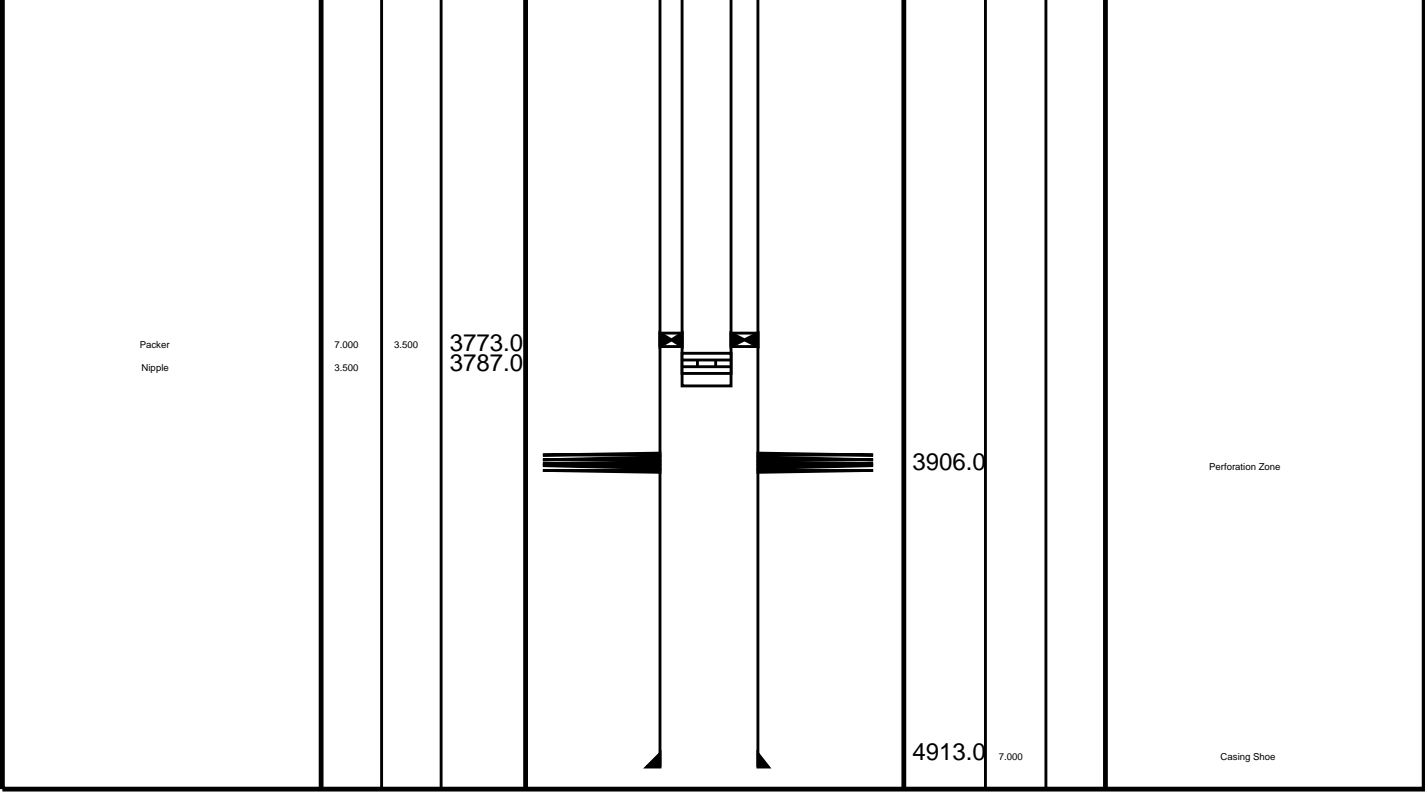
RUN 1

SURFACE EQUIPMENT

MWPM-AA

DOWNHOLE EQUIPMENT

AH-Swbs-a 761			12.74
AH-Swrs-b 753			12.05
AH-Swhs-a 726			11.67
MWPG-AA 19 MWGH-BA 94	MWPG GR	— 2.41	11.37
MWPH-AA 94 MWPS-AA 94			10.39
	CCL SMWP Pres SMWP Temp Tension	— TOOL ZERO	
AH-Wpsa-a 4002			7.57
AH-Esic 31958			7.04
GUN-2"HSD Powerjet Omega 1			6.50



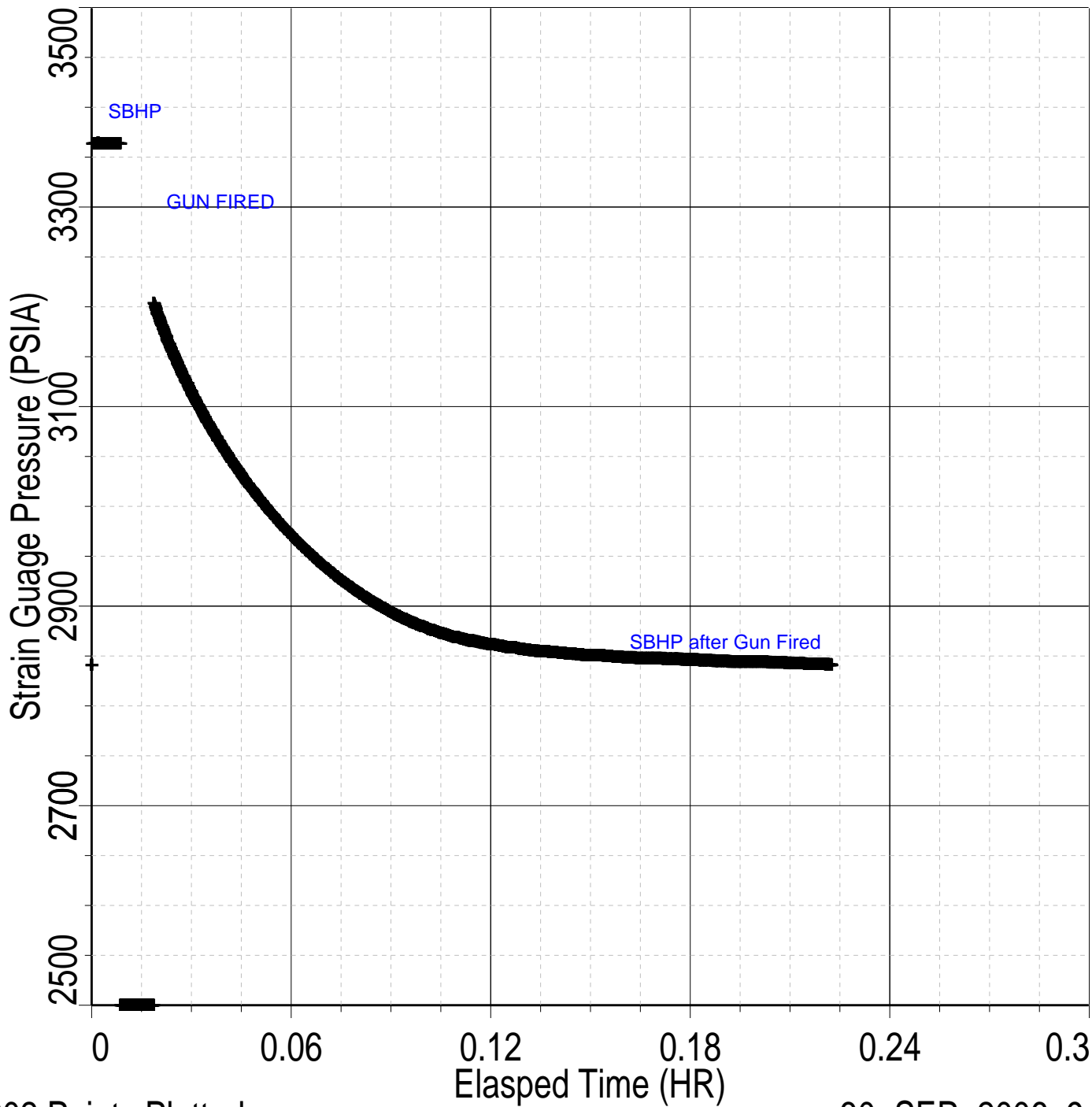
Schlumberger Job Event Summary

Time	Elapsed Time	Depth (M)	File
Log Pass (down)	30-Sep-2006 8:07 000:11	798.4 - 2077.2	PERFO_060LDP
Log Pass (down)	30-Sep-2006 8:19 000:16	2093.1 - 3933.9	PERFO_061LDP
Log Pass (up)	30-Sep-2006 8:35 000:07	3933.9 - 3867.1	PERFO_062LUP
Log Pass (up)	30-Sep-2006 8:50 000:20	3923.7 - 3872.8	PERFO_064LUP
Station Log	30-Sep-2006 8:53 000:13	3903.4 - 2.0	PERFO_065LTP
Log Pass (up)	30-Sep-2006 9:12 000:31	3851.9 - 2333.7	PERFO_066LUP



Gun # 1
3906m to 3910m MDKB

Index: 13863.3 - 17929.9 M



1602 Points Plotted

30-SEP-2006 9:58

TIME	PSIA	DEGF
2720.0	3364.0840	206.2679
2740.0	3364.0340	206.2786
2760.0	3364.0469	206.2872
2780.0	-999999.9999	181726.7188
2800.0	3193.8080	206.1172
2820.0	3147.7738	206.1959
2840.0	3109.3970	206.1876
2860.0	3075.6033	206.1743
2880.0	3046.8107	206.1407
2900.0	3020.5747	206.1684
2920.0	2997.4070	206.1753

2920.0	2937.4000	206.1733
2940.0	2976.5376	206.3536
2960.0	2957.7823	206.4837
2980.0	2940.8548	206.6615
3000.0	2925.9401	206.7948
3020.0	2912.8957	206.7498
3040.0	2901.2194	206.7790
3060.0	2891.0225	207.4628
3080.0	2882.3058	207.2157
3100.0	2875.5568	207.1129
3120.0	2869.9743	207.0955
3140.0	2865.5251	206.9944
3160.0	2862.0739	207.1048
3180.0	2859.1929	207.0495
3200.0	2856.7334	207.0554
3220.0	2854.6576	206.8922
3240.0	2853.2648	206.8609
3260.0	2851.8868	207.1750
3280.0	2850.8757	206.9625
3300.0	2849.5681	207.0944
3320.0	2848.6399	207.0676
3340.0	2847.7126	207.1458
3360.0	2847.1306	207.2661
3380.0	2846.4891	207.3218
3400.0	2845.8023	207.3101
3420.0	2845.0554	207.1651
3440.0	2844.3180	206.8946
3460.0	2843.8487	206.8981
3480.0	2843.2039	207.0222
3500.0	2842.5261	207.0178
3520.0	2841.9729	207.1608

Schlumberger

Shooting Pass

MAXIS Field Log

Company: Esso Australia Ltd.

Well: B-17

Output DLIS Files

DEFAULT PERFO_064LUP FN:63 PRODUCER 30-Sep-2006 08:50 3923.7 M 3872.8 M

OP System Version: 14C0-302

MCM

MWP_GUN SRC-3220-WPP-AAP5 MWPT-CA SRC-3220-WPP-AAP5
 MWGT-BA SRC-3220-WPP-AAP5

PIP SUMMARY

Time Mark Every 60 S

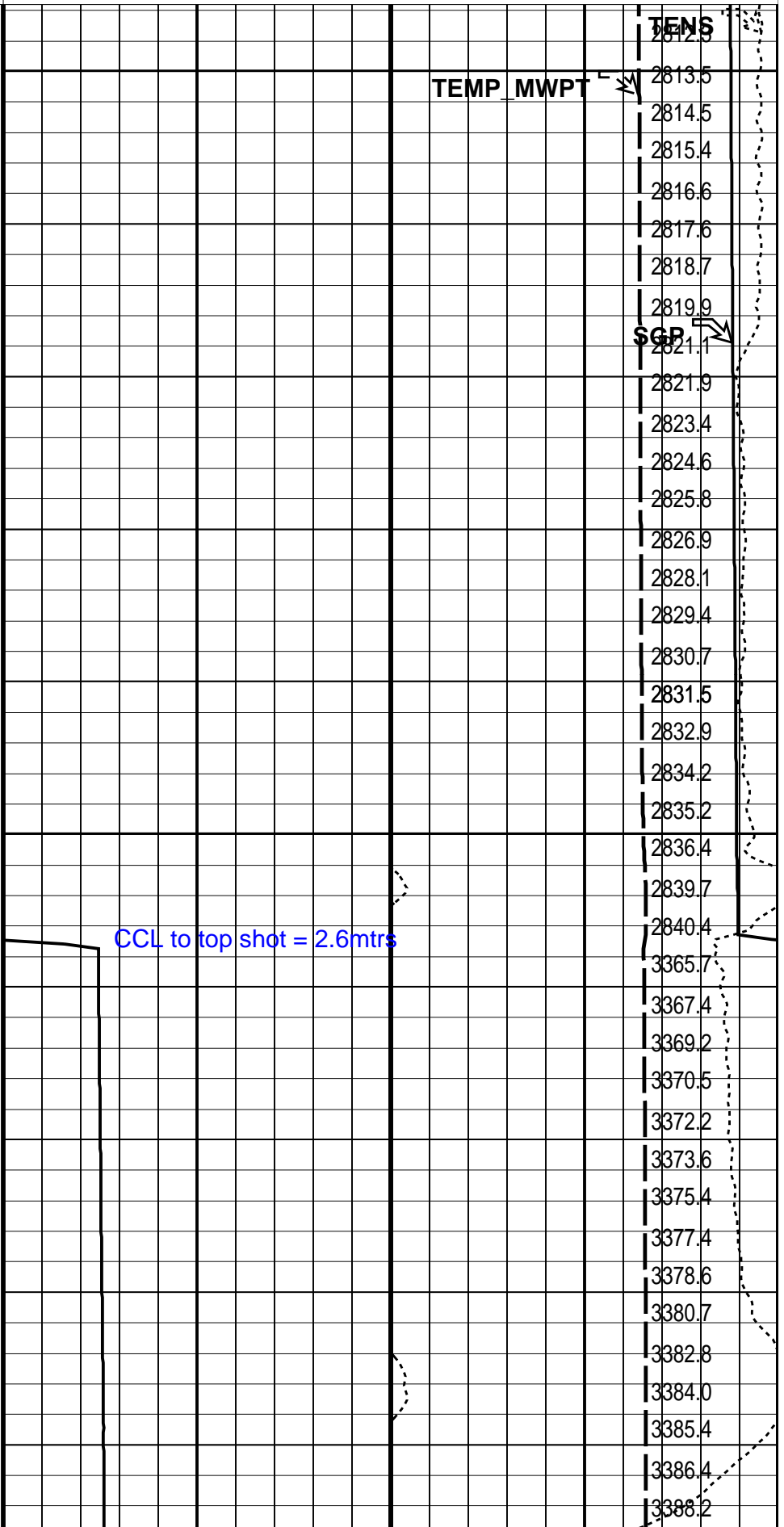
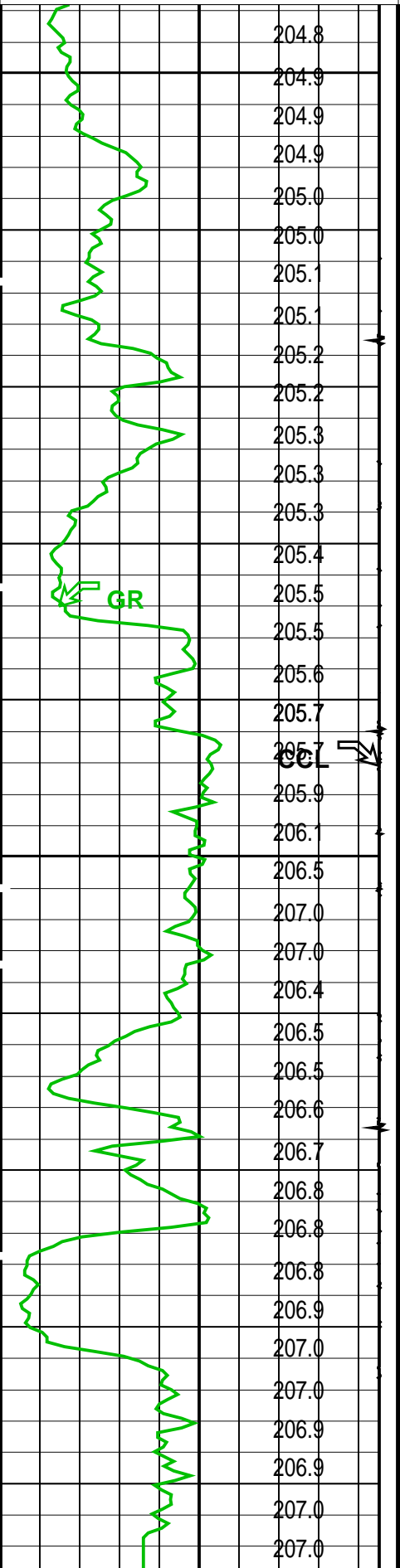
	Temperature (TEMP_MWPT) (DEGF)		Pressure (SGP) (PSIA)
CCL			Tension (TENS)

Gamma Ray (GR)
(GAPI) 150

Casing Collar Locator (CCL)
(----) 1

Temperature (TEMP_MWPT)
(DEGF) 250

Strain Gauge Pressure (SGP)
(PSIA) 3000



3875

3900

CCL to top shot = 2.6mtrs

TENS

2813.5

2814.5

2815.4

2816.6

2817.6

2818.7

2819.9

2821.1

2821.9

2823.4

2824.6

2825.8

2826.9

2828.1

2829.4

2830.7

2831.5

2832.9

2834.2

2835.2

2836.4

2839.7

2840.4

3365.7

3367.4

3369.2

3370.5

3372.2

3373.6

3375.4

3377.4

3378.6

3380.7

3382.8

3384.0

3385.4

3386.4

3388.2

Casing Collar Locator (CCL)		Strain Gauge Pressure (SGP)	
-19	(----) 1	0	(PSIA) 3000
Gamma Ray (GR)		Temperature (TEMP_MWPT)	
0	(GAPI) 150	0	(DEGF) 250
CCL From CCL to T1		Tension (TENS)	
		0	(LBF) 2500
	Temperature (TEMP_MWPT) (DEGF)	Pressure (SGP) (PSIA)	

PIP SUMMARY

Time Mark Every 60 S

Parameters

DLIS Name	Description	Value
MWPT-CA: MEASUREMENT WHILE PERFORATING TOOL		
DEVI_FL_CORR	Deviation Angle for Flow Line Correction	0 DEG
FLD	Flow Line Density	1 G/C3
MWPT_NULL_SOURCE	MWPT NULL Temperature Source	TEMS
MWPT_NULL_TEMP	MWPT NULL Temperature	0.0 DEGC

Format: MWP Vertical Scale: 1:200 Graphics File Created: 30-Sep-2006 08:50

OP System Version: 14C0-302
MCM

MWP_GUN	SRC-3220-WPP-AAP	MWPT-CA	SRC-3220-WPP-AAP
MWGT-BA	SRC-3220-WPP-AAP		

Output DLIS Files

DEFAULT	PERFO_064LUP	FN:63	PRODUCER	30-Sep-2006 08:50
---------	--------------	-------	----------	-------------------



Correlation Pass

MAXIS Field Log

Company: Esso Australia Ltd. Well: B-17

Input DLIS Files

DEFAULT	PERFO_062LUP	FN:61	PRODUCER	30-Sep-2006 08:35	3933.9 M	3867.1 M
---------	--------------	-------	----------	-------------------	----------	----------

Output DLIS Files

DEFAULT	PERFO_063PUP	FN:62	PRODUCER	30-Sep-2006 08:44	3938.5 M	3872.2 M
---------	--------------	-------	----------	-------------------	----------	----------

OP System Version: 14C0-302
MCM

MWP_GUN	SRC-3220-WPP-AAP	MWPT-CA	SRC-3220-WPP-AAP
MWGT-BA	SRC-3220-WPP-AAP		

PIP SUMMARY

Time Mark Every 60 S

	Temperature (TEMP_MWPT)		Pressure (SGP)
--	----------------------------	--	----------------

(TEMP_MWPT)
(DEGF)

CCL
From CCL to T1

Gamma Ray (GR)
(GAPI) 150

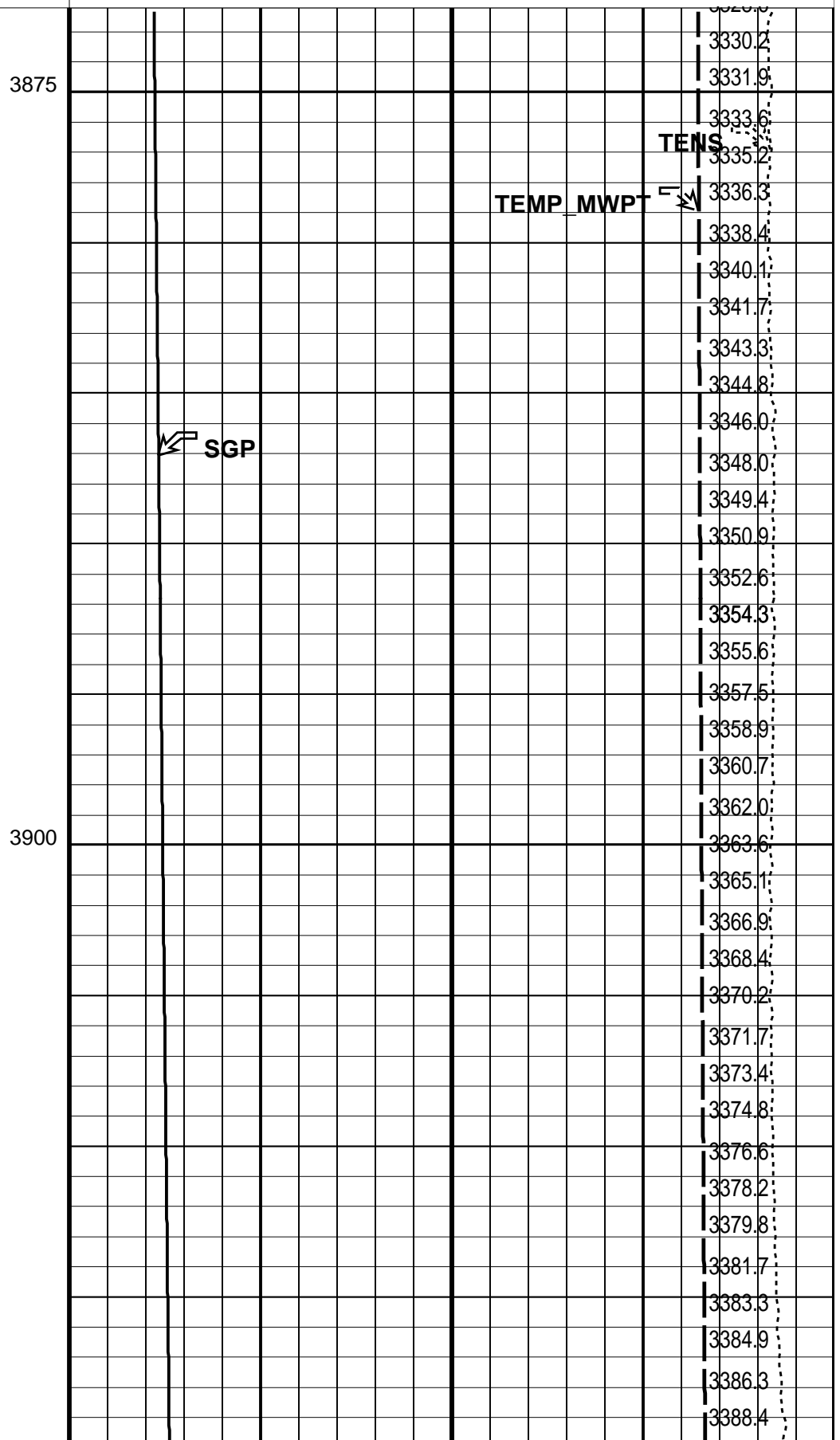
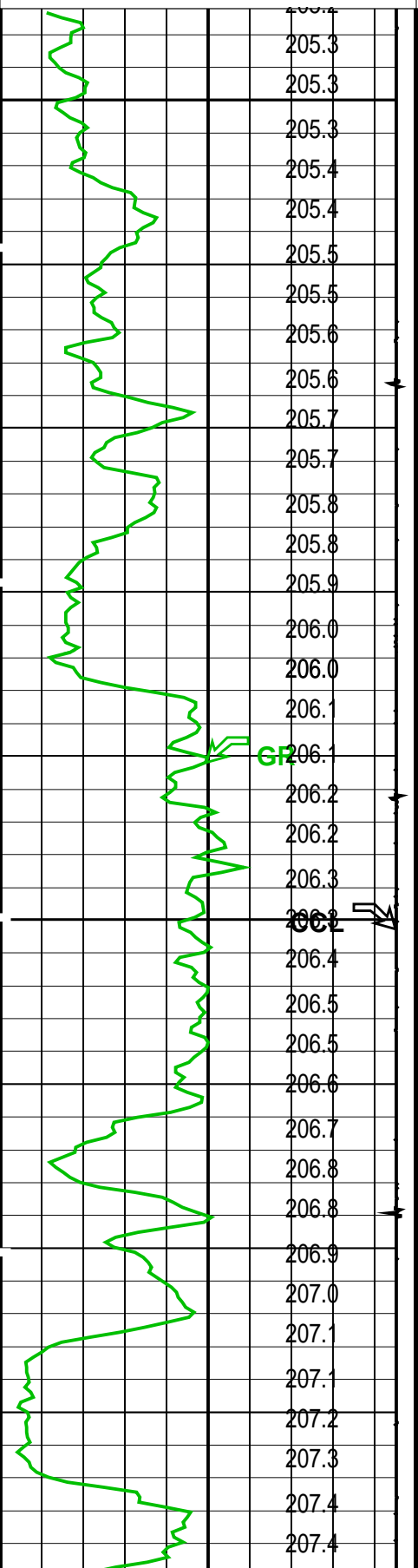
Casing Collar Locator (CCL)
-19 (----) 1

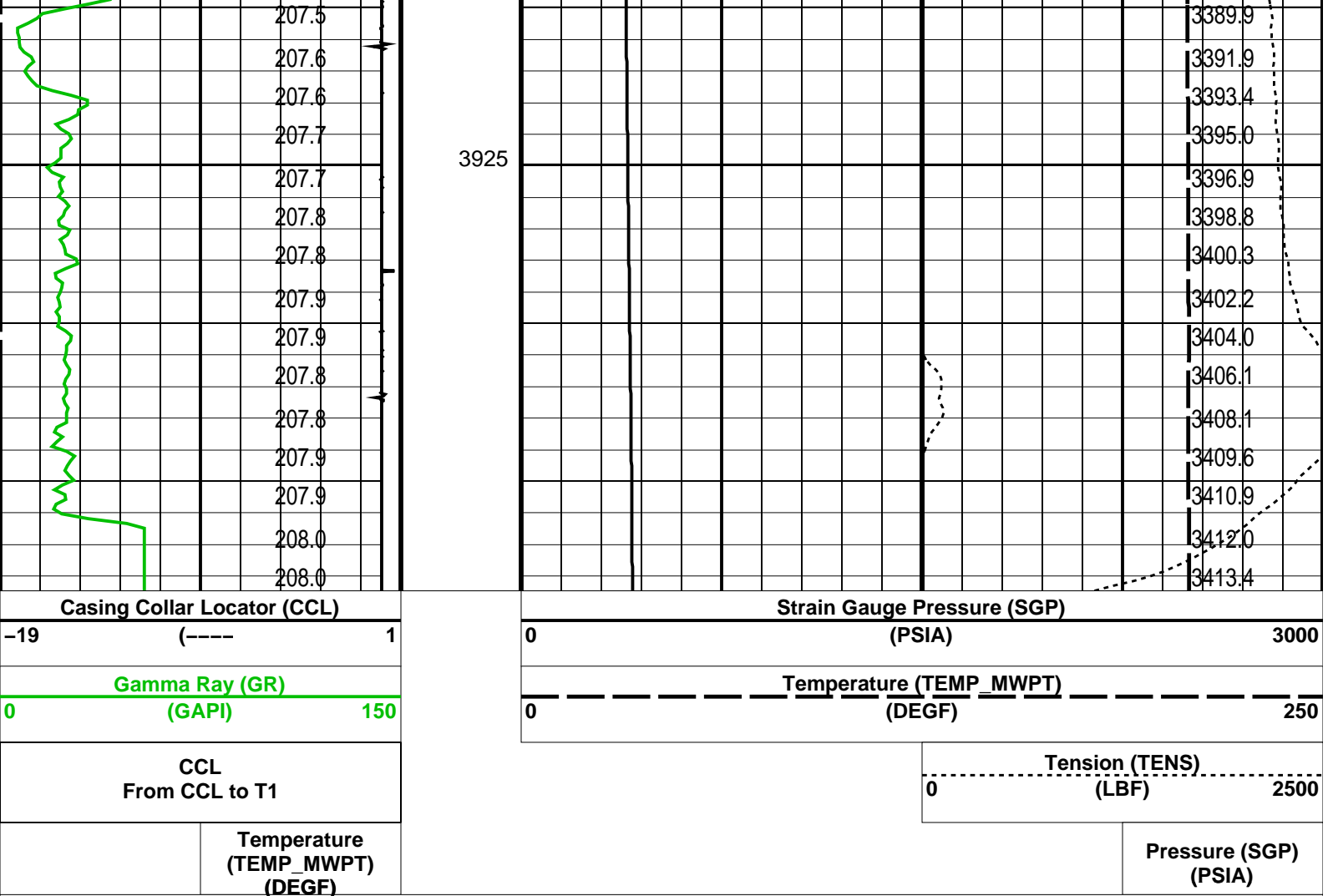
(PSIA)

Tension (TENS)
(LBF) 0 2500

Temperature (TEMP_MWPT)
(DEGF) 0 250

Strain Gauge Pressure (SGP)
(PSIA) 0 3000





PIP SUMMARY

Time Mark Every 60 S

Parameters

DLIS Name	Description	Value
MWPT-CA: MEASUREMENT WHILE PERFORATING TOOL		
DEVI_FL_CORR	Deviation Angle for Flow Line Correction	0 DEG
FLD	Flow Line Density	1 G/C3
MWPT_NULL_SOURCE	MWPT NULL Temperature Source	TEMS
MWPT_NULL_TEMP	MWPT NULL Temperature	0.0 DEGC
System and Miscellaneous		
DO	Depth Offset for Playback	4.5 M
PP	Playback Processing	NORMAL

Format: MWP Vertical Scale: 1:200

Graphics File Created: 30-Sep-2006 08:44

OP System Version: 14C0-302

MCM

MWP_GUN SRC-3220-WPP-AAP\$ MWPT-CA SRC-3220-WPP-AAP\$
 MWGT-BA SRC-3220-WPP-AAP\$

Input DLIS Files

DEFAULT PERFO_062LUP FN:61 PRODUCER 30-Sep-2006 08:35 3933.9 M 3867.1 M

Output DLIS Files

DEFAULT PERFO_063PUP FN:62 PRODUCER 30-Sep-2006 08:44

Company: Esso Australia Ltd.

Schlumberger

Well: B-17

Well: **B-17**
Field: **Bream B**
Rig: **Prod4**
Country: **Australia**

2" HSD Powerjet Omega
Mwpt
Perforation Record