



ESSO AUSTRALIA LTD.

915111 001
(Page 1 of 37)

BLACKBACK A-3 WELL
SUBSEA DEVELOPMENT
DRILILNG AND EVALUATION PROGRAM
SEDCO 702 SEMISUBMERSIBLE

Drilling Engineer: MIKE SARRERA Date: 26/1/99
Lead Engineer: D. J. Parker Date: 26/1/99
Operations Superintendent: L. M. Perry Date: 27/1/99
Drilling Manager: Robert C. Parker Date: 27 JAN 99

NOTE: This program is to be used in conjunction with the Esso Floating Drilling Operations Manual and Supplemental Operations Manual

Esso Australia Limited

915111 002

Blackback A-3 Well

Distribution List

	<u>Recipient</u>	<u># of Copies</u>
1.	EUDC Drilling Manager	1
2.	EUDC Drilling Operations Managers	2
3.	EUDC Drilling Technology Manager	1
4.	EAL Drilling Manager	1
5.	Blackback Project Manager	1
6.	Blackback Subsea Supervisor	1
7.	Blackback Geological Operations	1
8.	EAL Drilling Operations Superintendents	1
9.	EAL Drilling and Completions Engineers	3
10.	EAL Materials & Logistics Staff	2
11.	Contract Rig Site Geologists	1
12.	EAL Rig Supervisors	2
13.	Schlumberger Oil Field Australia Pty Ltd	2
14.	EAL Main Well File (Original)	1
15.	EAL Drilling Library	1
16.	Blackback Project Library	1
17.	BHPP	1
	Total	23

Esso Australia Limited

Blackback A-3 Well

Table of Contents

	<u>Page</u>
1.0 General Well Information	
1.1 Introduction	4
1.2 Summary Drilling Plan	4
1.3 Data Security	5
1.4 Well Data	5
1.5 Environmental Management Plan	6
Figure-1 Location Map	7
Figure-2 Wellbore Sketch	8
Figure-3 Well Progress Curve	9
2.0 Geology and Formation Evaluation	
2.1 Well Objectives	10
2.2 Predicted Lithology/Pore Pressures	10
2.3 Formation Evaluation	11
2.3.1 Electric Logging	11
2.3.2 Cuttings Samples	11
2.3.3 Mud Logging	11
2.3.4 Coring	12
2.3.5 Well Completion	12
3.0 Critical Issues & Offset Drilling Experience	
3.1 Surface Hazards	14
3.2 Shallow Hazards	14
3.3 Abnormal Pressure	15
3.4 Hydrogen Sulfide/Carbon Dioxide	15
3.5 Wellbore Stability	16
3.6 Hydrates	16
3.7 Deepwater	17
3.8 Lost Returns	18
3.9 Drawdown Formations	18
3.10 Environmental Considerations	19
3.11 Other Drilling Experiences	19
3.12 Drilling and Well Completion Risk Assessment Summary	20
Figure-4 Offset Well Stick Charts	21
Figure-5 Composite Well Plan Plat	22
4.0 Well Design & Engineering	
4.1 Directional Survey Program	23
4.2 Casing Program	24
4.3 Wellhead Program	25
4.4 Drilling Fluids Program	26
4.5 Bit & Hydraulics Program	27
4.6 Cementing Program	28
4.7 Bottom-Hole Assembly Program	29
4.8 Drill Collar Properties	30
4.9 Well Control Equipment & Testing	31

5.0	Drilling Operations Sequence	
5.1	Move-On and Rig-Up	32
5.2	17-1/2" x 36" Hole/30" Structural Casing	32
5.3	17-1/2" Hole/20" x 13-3/8" Surface Casing	33
5.4	12-1/4" Hole/10-3/4" x 9-5/8" Production Casing	33
5.5	8-1/2" Hole/5-1/2" Slotted Production Liner	34
	Figure-6 Directional Drilling Plan	36

1.0 General Well Information

1.1 Introduction

The Blackback A-3 will be drilled and completed with the Sedco Forex 702 semisubmersible in 402m of water. It is planned to be the third of three subsea development wells in the 1999 Blackback Development Program; VIC L-20 License in Bass Strait, Offshore Australia. The well is designed as a double-build, near horizontal well at 89 degrees maximum angle. This well will be drilled to 3939m MD, 2841m TVD DF. It is programmed to encounter the Latrobe (Eocene) along a 500m, 89° hole section. It is programmed to twin the productive zone drilled in the Blackback-1 exploration well. This will be the third well produced because of its expected poorer quality reservoir rock. An oil column thickness of 21m is expected and will be produced through a 5-1/2" slotted liner. TD of the well at 2841m TVD is programmed to be 19m TVD above the OWC @ 2834m SS. The toe of the 8-1/2" production hole will be drilled 6m± TVD deeper than the heel. TVD elevation control will be difficult because previous log data from Blackback-1 shows little GR contrast between the Eocene sands and the overlying Lakes Entrance formation. Therefore, geo-steering the horizontal section is not possible. There is no coring program for this well.

The Blackback-1 well is the closest offset and is located about 1.5 km southeast of the proposed A-3 surface location. The Blackback-1 was drilled as a deviated hole to 4401m MD in 1989 and tested significant amounts of oil and gas before being permanently plugged and abandoned, with a maximum mud weight of 11.1 ppg. H₂S was encountered in the Terakihi-1 well, drilled about 3 km north of the proposed Blackback A-3 surface location, with levels of H₂S from formation samples reaching 400 ppm. CO₂ levels are reported to 0.35% in the field area. Abnormal pressure is not expected in this well.

The Blackback A-3 well will be drilled as a straight-hole to its 20" x 13-3/8" surface casing point of 1220m. Of the first three wells drilled in the Blackback Phase I Development, Blackback A-3 and A-2/A-2A will be drilled from spud through the setting of the 20" x 13-3/8" surface and 20" conductor casing respectively, and then suspended. The Blackback A-1 well will then be drilled conventionally and completed without an operational suspension. The A-2 will be re-entered and drilled to completion prior to returning to the A-3. Permanent downhole pressure/temperature gauges, with surface readout capability back to the Mackerel platform, will be installed in these wells to monitor reservoir performance at each wellsite. Special collision avoidance measures will be utilized because the rig will be located in a major northeast to southwest shipping lane as well as a recognized commercial fishing area.

1.2 Summary Drilling Plan

1. Position Rig over the Blackback A-3 Location and run/land the TGB within 2.5m of call location.
2. Drill 17-1/2" x 36" Hole to 505m, run and cement 30" structural casing with 2.37m± of stick-up.
3. Drill 17-1/2" Hole to 1220m, run and cement 20" x 13-3/8" surface casing and 18-3/4" wellhead.
4. Run Completion Guidebase & TP&A. Drill the A-2/A-2A& A-1 wells. Return to A-3, Remove Cap.
5. Reposition rig and re-install guidelines. Run BOP Stack. Drill-out, do PIT, put SBM in well.
6. Directionally drill 12-1/4" hole to 3410m MD, 2835m TVD. Use LWD on final build to 89°.
7. Run and cement 10-3/4" x 9-5/8" Production Casing at 3393m± MD.
8. Drill 8-1/2" hole @ 89° with 9.5 ppg mud to 3939m MD, 2841m TVD, and logging w/LWD.
9. Clean out Production Casing. Displace well with clean brine. Run Lower Completion with TCP guns.
10. Run Upper Completion on the Monobore Riser. Pull Drilling Riser and BOP Stack.
11. Run Subsea Tree on Monobore Riser. Perf well. Pull Monobore Riser and Run Tree Cap.

1.3 Data Security

All well data is confidential to Esso and should be discussed solely on a "need to know" basis. All IADC and any other well reports will be collected upon the completion of operations or other work. All contract personnel shall surrender all copies of the Blackback A-3 Drilling Program and any supplemental procedures, tally books, working notes, etc. upon the completion of operations. Data required for formal reports to be submitted for the completion of any work may be retained only until such time that the reports are submitted to Esso. Only Esso pre-approved personnel shall enter the mudlogging and WL/LWD units.

1.4 Well Data

Well Name:	Blackback A-3
Well Type/Depth:	Subsea Development to 3939m MD/2841m TVD
Well Service Category/Partners:	Standard/Esso (50% WI), BHPP (50% WI)
Block:	License VIC L-20-Offshore Victoria, Australia
Drilling Contractor/Rig:	Sedco Forex/Sedco 702 Semisubmersible
Objectives:	Top of Latrobe Sands-Eocene Age (Oil & Gas)
Coordinates:	ANS/AGD AMG Zone 55, UTM, CM-147 Deg E Lat: 38° 32' 30.87" S, Long: 148° 33' 11.87" E X: 635,370m E, Y: 5,732,898m N (within 2.5m)
Water Depth:	402m
Rig DF-WL/DF-ML:	26m/428m (with 210° T Rig Heading)
Expected BHST:	194°± F
Directional Plan:	KOP @ 2000m, ROB @ 2.5° Deg/30m to 62.7°, 144.3° Az. & Hold Well to 2nd KOP @ 3073m MD with ROB/build @ 2.5°/30m to 89° angle to 50m Radius Heel Target at the Top of Latrobe at 770m South, 570m East of Surface Location @ 2835m TVD and 144.3° Azimuth. Hold 89° Angle to Toe Target @ 1170m South, 866m East @ 144.1° Azimuth and 2841m TVD
Key Control Wells:	Blackback-1, 2, 3, Hapuku-1, Terakihi-1 (1.5-4 km)
Estimate Well Days:	34 Target/40 AFE
Critical Issues:	Hole Instability, Vessel Collision Avoidance, SIMOPS and subsea completions

1.5 Environmental Management Plan

A Blackback Environment Plan and Blackback Environmental Management Plan were submitted to the Department of Natural Resources and Energy, Minerals and Petroleum Victoria Section. Approval was granted with the VIC L-20 Petroleum License, which includes the Blackback Field. These will be bridged into the Floating Drilling Operations Manual Supplement issued for the Blackback Subsea Development Wells. All operations will be conducted in compliance with these plans and EAL's established waste management guidelines.

EAL's existing plans provide for offshore and onshore waste handling, chemical and materials inventory management, handling of radioactive and explosive materials, fuel transfer management, reporting and documentation guidelines, etc.

Operations on this well will be incorporated into EAL's Emergency Response and Oil Spill Contingency Plans as well as into their Incident Management System.

An emphasis will be on restocking and recycling of materials as much as practical. All materials handling and disposal practices will be in accordance with the applicable laws of Australia.

The drilling fluids proposed for use in the well are acceptable for ocean discharge in Australia including the associated formation cuttings as well as cementing returns, bulk materials and rig domestic effluent, wash, and ballast waters and BOP fluids.

If the rig and supply/tow vessels come directly to Esso from New Zealand, they must take on new ballast at the outer limit of Australian waters. This is mandated due to possible introduction of exotic species in the local marine environment.

BLACKBACK AREA MAP

Blackback Field

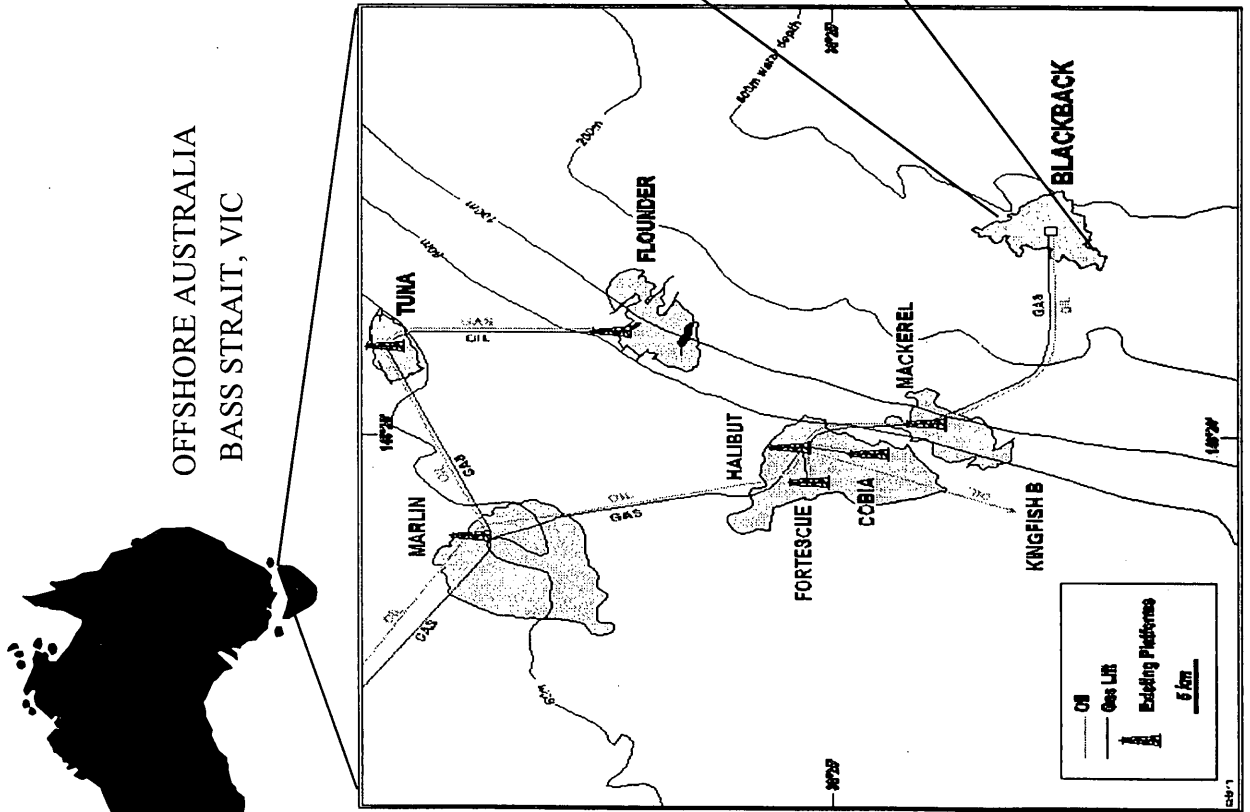
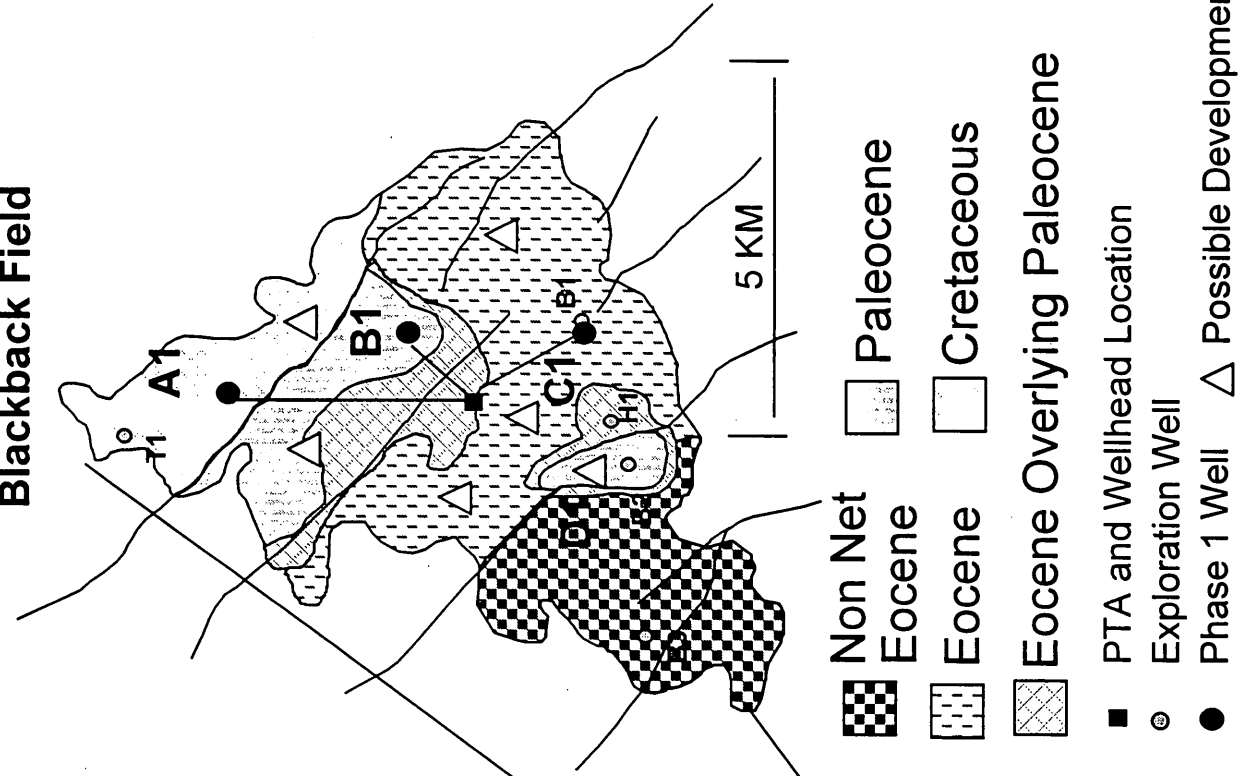
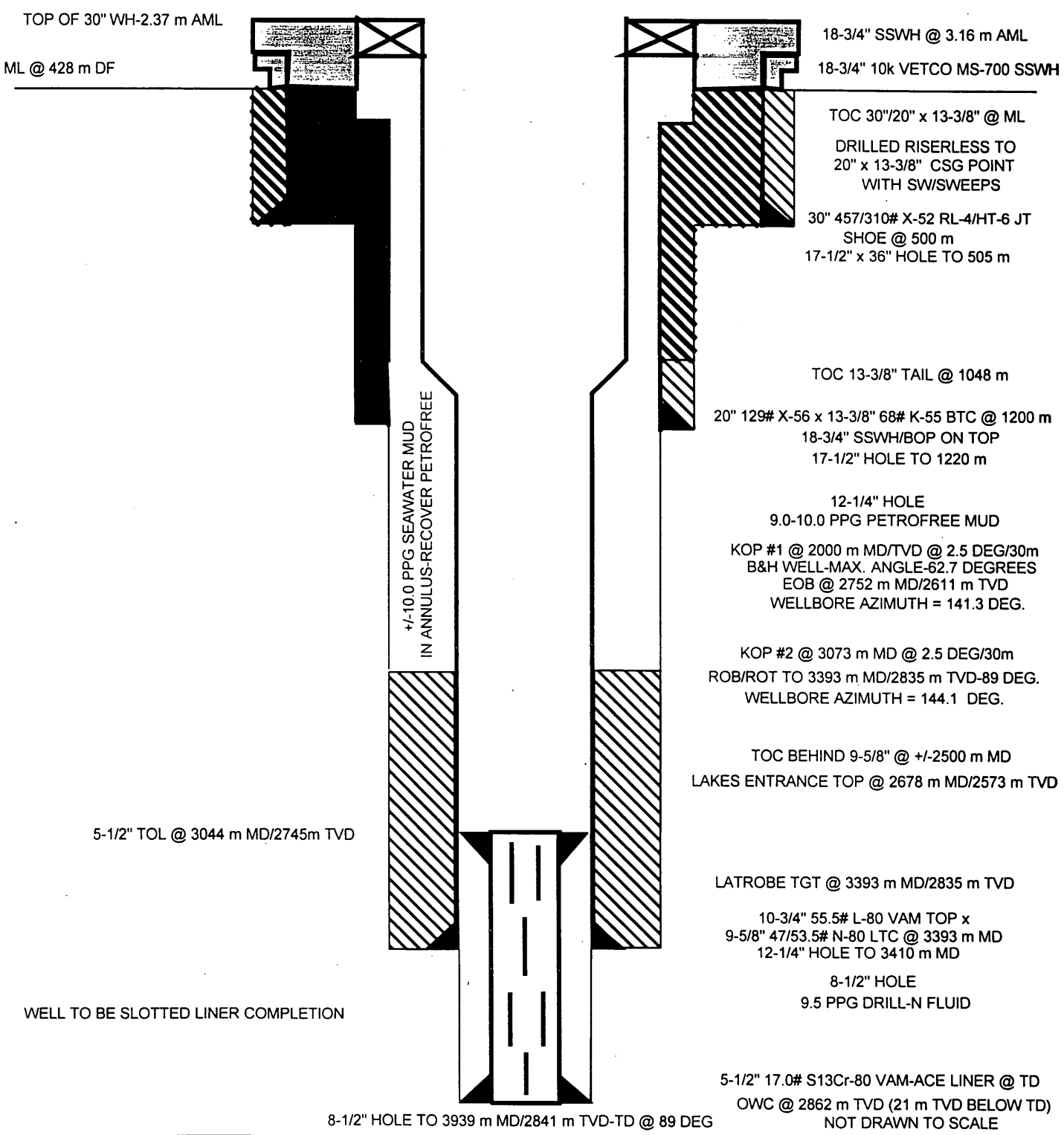


FIGURE I-LOCATION MAP

ESSO AUSTRALIA LTD.
BLACKBACK C-1 PROPOSED WELLBORE SKETCH

DF

ALL DEPTHS METERS FROM DF-EXCEPT AS NOTED



TOP OF 30" WH-2.37 m AML

ML @ 428 m DF

WATER DEPTH = 402 m

18-3/4" SSWH @ 3.16 m AML

18-3/4" 10k VETCO MS-700 SSWH

TOC 30"/20" x 13-3/8" @ ML

DRILLED RISERLESS TO
20" x 13-3/8" CSG POINT
WITH SW/SWEEPS

30" 457/310# X-52 RL-4/HT-6 JT
SHOE @ 500 m
17-1/2" x 36" HOLE TO 505 m

TOC 13-3/8" TAIL @ 1048 m

20" 129# X-56 x 13-3/8" 68# K-55 BTC @ 1200 m
18-3/4" SSWH/BOP ON TOP
17-1/2" HOLE TO 1220 m

12-1/4" HOLE
9.0-10.0 PPG PETROFREEE MUD

KOP #1 @ 2000 m MD/TVD @ 2.5 DEG/30m
B&H WELL-MAX. ANGLE-62.7 DEGREES
EOB @ 2752 m MD/2611 m TVD
WELLBORE AZIMUTH = 141.3 DEG.

KOP #2 @ 3073 m MD @ 2.5 DEG/30m
ROB/ROT TO 3393 m MD/2835 m TVD-89 DEG.
WELLBORE AZIMUTH = 144.1 DEG.

TOC BEHIND 9-5/8" @ +/-2500 m MD
LAKES ENTRANCE TOP @ 2678 m MD/2573 m TVD

LATROBE TGT @ 3393 m MD/2835 m TVD

10-3/4" 55.5# L-80 VAM TOP x
9-5/8" 47/53.5# N-80 LTC @ 3393 m MD
12-1/4" HOLE TO 3410 m MD

8-1/2" HOLE
9.5 PPG DRILL-N FLUID

5-1/2" 17.0# S13Cr-80 VAM-ACE LINER @ TD
OWC @ 2862 m TVD (21 m TVD BELOW TD)
NOT DRAWN TO SCALE

5-1/2" TOL @ 3044 m MD/2745m TVD

WELL TO BE SLOTTED LINER COMPLETION

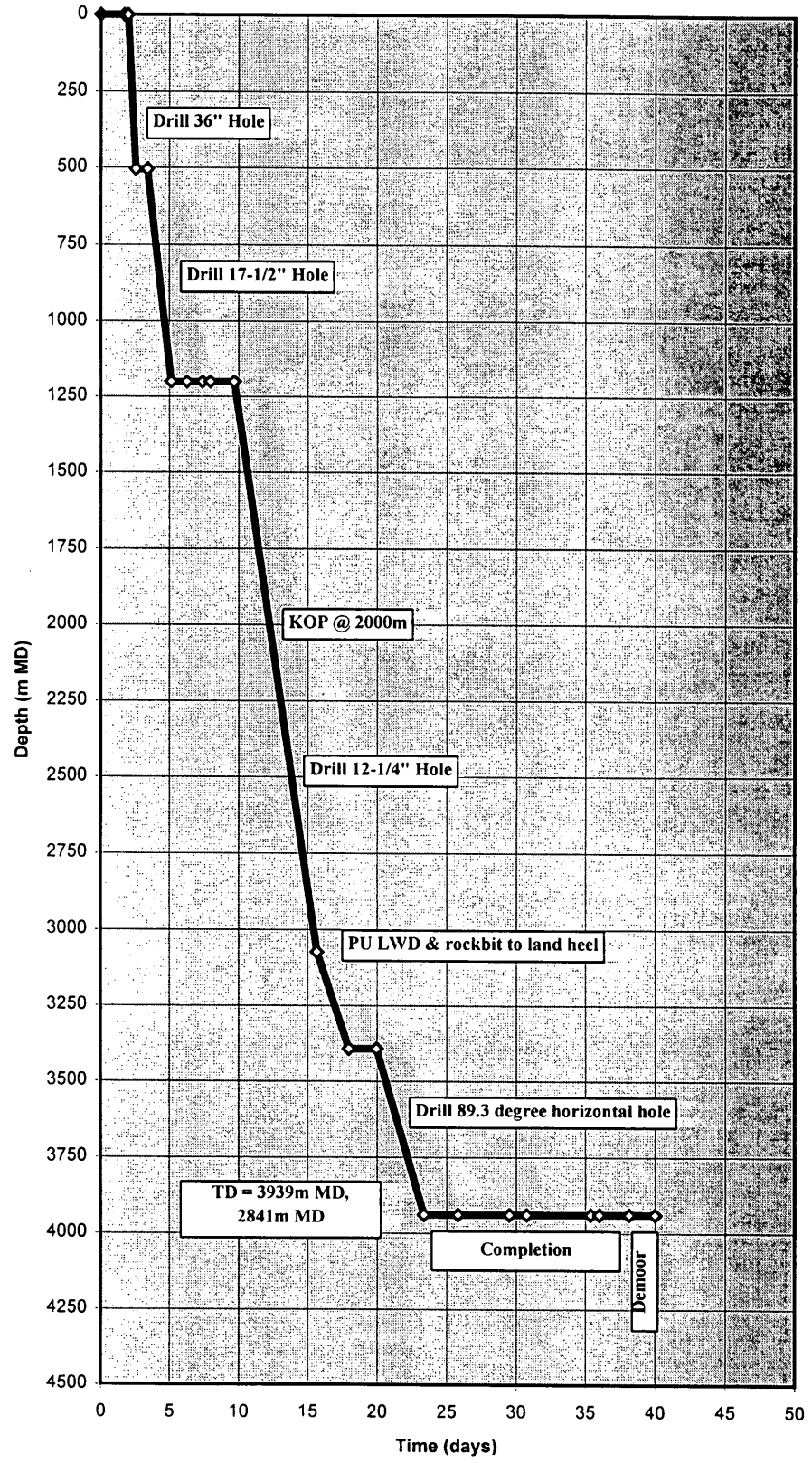
8-1/2" HOLE TO 3939 m MD/2841 m TVD-TD @ 89 DEG

Esso Australia Ltd.

Blackback A-3

Days vs. Depth Curve (MD)

Lithology	Depth		Formation Evaluation	Casing
	MD	TVD		
Gippsland	402	402		30" @ 500m MD 500m TVD
	428	428		
Lakes Entrance	2681	2575	LWD CDR/CDN	20" X 13-3/8" @ 1200m MD, 1200m TVD
	3258	2820		
Latrobe			LWD-RAB/ADN-6	10-3/4" X 9-5/8" @ 3393m MD, 2835m TVD
			LWD-RAB/ADN-6	
TD =		3939	2841	



Drilling Rig : Sedco Forex 702
 Target Time: 40.0 Days
 Proposed TD: 3939 m MD
 2841 m TVD
 Ave angle: 89.3 deg

5-1/2" slotted lnr @ 3926m MD, 2841m TVD

2.0 Geology and Formation Evaluation

2.1 Well Objectives

1. Complete all operations TRI free and without unapproved discharges.
2. Determine reservoir quality, hydrocarbon content and productivity of the Latrobe interval at the A-3 location. Drill the well and take a successful subsea completion in this interval on the initial attempt. Conduct all drilling and completion activities in a safe manner.
3. Confirm and evaluate the geological model and seismic mapping for this area of the Blackback field. Achieve the total depth objective for logging and completion.
4. Obtain quality formation evaluation data through mud logging and WL logging at TD.
5. Maximize the ultimate recovery from the reservoir sands using gas lift as needed.
6. Maximize drilling efficiency through use of the best available and practical subsea drilling technology. Drill and complete the well at the minimum cost and minimize overall wellbore risks.

2.2 Predicted Lithology/Pore Pressures

Formation	Geologic Age	Depth to Top (m-DF) MD/TVD	Pore Pressure (PPG)	Primary Lithology
Gippsland Limestone	Miocene	428/428	8.5	Limestone/Siltstone
Lakes Entrance	Oligocene	2681/2575	8.5	Siltstone/Marl
Latrobe Group	Eocene	3258/2820	8.5	Sandstone/Siltstone
Total Depth (Latrobe)	Eocene	3939/2841	8.5	

Angle at the formation top is 57° for the Lakes Entrance and 89° for the Top of Latrobe and deeper in this build and hold angle, near horizontal well.

2.3 Formation Evaluation

2.3.1 Electric Logging

Depth Interval-m DF	Hole Size-Inches	Run No.	Log Type
3073-3410m± MD (PETROFREE Mud)	12-1/4"	1	Anadrill LWD-CDR-8/CDN-8 (Provides NEU-DEN-GR-DUAL RESIST)
3410-3939m± MD (BARADRIL-N)	8-1/2"	1	Anadrill LWD-RAB/ADN-6
All To Be Run Drilling Ahead			

Notes:

- Alternative logging tools may be run and extra runs conducted depending on the results obtained and could include conventional WL logging tools with TLC if necessary. The BHA is to be tripped for the LWD tools to log while drilling from the 2nd KOP above the Latrobe Group to TD. An I-Sonic LWD tool may also be considered for use. Drill enough rathole so that all LWD logs are run over the entire 500m section.
- A Schlumberger WL logging unit will be on the rig with back-up PEXAIT tools.

2.3.2 Cuttings Samples

Cuttings/Sample Type	Interval-m MD (DF)	Frequency-m	Samples per Point
Washed/Dried in Cloth Bags (250 Gram)	1220-3108	Every 30m from the 20" x 13-3/8" Shoe to 150m above the Latrobe	3
Washed/Dried in Cloth Bags (250 Gram)	3108-3258	Every 10m from 150m above to actual Top of Latrobe	3
Washed/Dried in Cloth Bags (250 Gram)	3258-TD	Every 5m from the Top of Latrobe to Total Depth	3
Spot Samples	13-3/8" Shoe-TD	For Every Gas Peak	3

2.3.3 Mud Logging

Normal mud logging services will be utilized for all drilling below the 20" x 13-3/8" casing shoe. A fully computerized mud logging unit will be used. On a timely basis, the data engineer will collect and plot all normal drilling parameters. Two-meter averages of drilling parameters will be plotted on a 1:100 scale. The appropriate EAL G&G staff will finalize this program at a later date. The following drilling parameters will be monitored and plotted on a continuous recorder while drilling below the 20" x 13-3/8" surface casing at a minimum:

- Rate of Penetration in mph
- Background Gas/Circulating Gas
- Connection Gas and Trip Gas
- Any H₂S / CO₂ Associated w/Background, Connection and Trip Gases
- Mud Weight (In/Out)
- Drill String Torque and Drag
- Weight on Bit, Rotary RPM and Standpipe Pressure
- Mud Flow (In/Out) and Changes in the Active System Volume

The following equipment with suitable back up is among the equipment that must be available at all times:

- Hydrogen Flame Ionization Total Gas Detector
- Hydrogen Flame Ionization Gas Chromatograph
- H₂S Detectors w/sensors located at the bell nipple, gas trap, rig floor, active mud pits and shakers
- Drager-type portable gas detector for H₂S, CO₂ and SO₂ (mud engineer to have GGT)

Mud loggers will be provided additional instructions regarding equipment and procedures.

2.3.4 Coring

No conventional cores are planned in the well as programmed and no dedicated coring equipment is available on standby for this well in the area.

2.3.5 Well Completion

Well Completion Objectives:

- Conduct all well completion operations safely and successfully.
- Confirm the productivity of the completion interval and hydrocarbon content of the formations.
- Monitor reservoir pressure/temperature throughout the life of the well using a downhole gauge system.
- Maintain wellbore integrity throughout the life of the well. Install the 5-1/2" liner successfully.

Generalized Well Completion Program (Subject to Change):

1. Run and hang the 5-1/2" liner assembly in the well. Set its hanger and close its isolation valve.
2. Run 8-1/2" bit with 10-3/4" x 9-5/8" casing scrapers (single trip). Displace mud from the well with seawater and circulate until clean. Displace wellbore with filtered and inhibited 8.9 ppg NaCl completion brine (equates to 8.7 ppg and 150 psi overbalance when adjusted for temperature effects).
3. Run the Upper Completion Assembly with 4-1/2", 12.6 ppf, S13Cr-80, VAM-Ace tubing including these major pieces of equipment:
 - WL Entry Guide
 - Halliburton Mirage Plug
 - Halliburton 3.437" x 3.260" RN No-Go Landing Nipple
 - 9-5/8" Halliburton MHP Hydraulic Packer w/Millout Extension
 - PBR Halliburton Seal Bore w/5" Bore & 20' Stroke Seal Assembly
 - Halliburton 3.688" R-Landing Nipple
 - Schlumberger DHPT Downhole Gauge Assembly (to be @ 2290m TVD below the tbg hgr)
 - Camco Side Pocket Mandrel MMRG-4 w/SO2-30R Valve (to be @ 640m± TVD below the tbg hgr)
 - Camco TR-SCSSSV TRC-DH-5F (to be @ 573m± TVD-TH)
 - Camco RH-2 Landing Nipple for Back-Up SCSSSV Use (to be @ 50m± TVD below the tbg hgr)
 - ABB VG Tubing Hanger for MS-700 WH-4.5" x 2.375"-Dual Bore

The tubing string to be run is 4-1/2" 12.6 ppf S13Cr-80 VAM-Ace.

4. Run the completion assembly to bottom while filling the string with Baroid XP-07 base oil. The XP-07 base fluid density is 6.4 ppg.

5. Orient, land and lock the tubing hanger in place with the tubing tailpipe inside the 5-1/2" liner.
6. Pressure down the monobore riser and 4-1/2" tubing to 4000 psi to set the hydraulic packer and test the entire tubing and hanger assembly as set. Pressure up an additional five (5) times to open the Mirage plug. Close TR-SCSSSV and bleed off pressure above it to inflow test the SCSSSV. Then, equalize pressure on both sides before opening and bleeding off. Pressure up the annulus safety valve control line to 5000 psi. Pressure test the production annulus to 3500 psi through the spare umbilical hydraulic hose. Close the annulus TR-SCSSSV and bleed off pressure from above the conduct an inflow test. Equalize the pressure, open the safety valve and bleed annulus pressure to zero.
7. Set and Test PXX plug in the production bore of the tubing hanger on WL.
8. Release the tubing hanger running tool. PU and allow the XP-07 base oil to U-tube from the monobore riser. Recover at a controlled rate for later use.
9. POH with the monobore riser assembly and the tubing hanger running tool. Circulate riser to seawater.
10. Disconnect BOP stack and move 30m off well and away from adjacent wells, pipeline and other subsea facilities. Pull BOP and Riser.
11. Prepare and run Subsea Tree on Monobore Riser. Land, latch and pull test the assembly on the subsea wellhead. Function test and pressure test tree valves to 5000 psi and flowline jumpers.
12. Pressure up annulus safety valve control line to 5000 psi. Pressure up production annulus to 3500 psi to test the tubing hanger to tree connection. Bleed both pressures to zero.
13. Rig-up wireline unit and pull the PXX plug from the tubing hanger. Pressure up riser and production tubing to 4500 psi to fire the perforating guns.
14. Open PTA valve and wing valve. Pump seawater down the monobore riser to displace riser fluids into the pipeline. Release the subsea tree running tool and POH with the monobore riser and completion and workover assembly.
15. Run tree cap on Tree Cap Running Tool and drillpipe.
16. Release the well to production.

3.0 Critical Issues & Offset Drilling Experience

3.1 Surface Hazards

This is currently an undeveloped offshore area without known pipelines, telecommunications cables or other man-made obstructions at or near the proposed drillsite. This situation changes with the laying of the proposed 8" x 12" insulated flowline, 2-1/2" gaslift and armored electro-hydraulic umbilical lines from EAL's Mackerel Platform. In addition, supporting facilities such as the PTA (Pipeline Termination Assembly), UTA (Umbilical Termination Assembly) and EDU (Electrical Distribution Unit) will be installed in the area surrounding the proposed Blackback development wells. The proposed mooring program is designed to straddle the subsea facilities in place and utilizes a 210° T rig heading and 45/45° anchoring pattern to avoid the pipeline area as much as possible. Simultaneous operations plans will be put in place to deal with dropped objects and other scenarios concerning the subsea production equipment.

The seafloor has relatively flat, moderate and steep slopes in this area with dips nearby up to 3-7 degrees. Based on analysis of the nearby soil samples and offset well results, foundation failure-related events are not expected. Guidebase settling and deviations have been experienced on some wells in the area, but not using subsea wellhead systems similar to the system proposed for this well. The seabed surface samples consist of brown, fine to medium grained shelly siliceous carbonate and dense to medium dense sands. Pipeline corridor survey results in the area indicate a submarine valley running in an east-west direction dominates the seabed topography in the Blackback area. The area to the south of this valley is dominated by a ridge trending northeasterly with a steep slope into the Blackback valley to the north. The proposed location for the subsea wells is at the end of this ridge in 402m of water. The location was selected to avoid a small nearby tributary valley that could have active sediment movements and cause bathymetry variations. Nearby sediment movements are not expected to impact the well area while drilling and completing these wells.

The well location is in an area of northeast to southwest shipping lanes. Special collision avoidance plans will be put in place for managing approaching vessel hazards. This area of Bass Strait is one of active commercial fishing activities, but fishing activities have not impacted previous floating drilling campaigns. There are no known shipwrecks or unexploded ordinance expected in the area, which could pose a threat to operations or equipment. No seafloor debris was noted in the proposed well area during the site survey work. An ROV will be deployed when the rig is moored to verify the wellhead areas are clear of seafloor debris.

3.2 Shallow Hazards

A shallow hazards data review has been completed for the area. No seafloor or near seafloor hazards were noted in this work, nor experienced on any of the five offset wells drilled on the Blackback structure. Shallow gas has not been identified in any of the seismic surveys conducted over the structure. Shallow gas has not been experienced in offset wells (see the stick charts). No shallow gas was noted in any of the soil samples taken in this area.

1. Riserless drilling will be conducted until the 20" casing point and this casing string is run and cemented. The Subsea BOP stack and marine riser system will be installed on the 20".
2. Drilling will not commence until the drilling crews are assessed capable of normal riserless drilling operations. Periodic, ongoing shallow gas drills will be conducted. Operational meetings will be held with rig personnel to finalize riserless drilling preparations, emergency response plans and personnel duties.

3. The ROV will be deployed near the wellhead to monitor for indications of gas flow during riserless operations.
4. Preparations will be put in place to move the rig off location should any significant flows be encountered which could effect the drilling unit and onsite personnel.
5. All watertight doors and vent hatches not in use will be closed.
6. Monitoring of pump pressure indications will be done to check for a sudden change that could indicate the well is flowing.
7. Non-ported drill pipe floats will be used while drilling riserless.

The surface hole will be drilled with a minimum mud weight to provide sufficient overbalance, yet minimize the chances of bit balling and hole swabbing. Standard Esso tripping practices will be employed to keep the hole full and prevent swabbing. A ported drill pipe float will be used in the drill string once the BOP stack is run.

A riserless drilling procedure will be prepared and used on the rig.

3.3 Abnormal Pressure

Based on the Geologic Prognosis and offset well data, all geologic horizons are expected to be normally pressured. Abnormal pressure in this portion of Bass Strait is known to come in below the massive P. Mawsonii marine shale at 4000m± SS; much deeper than the top of Latrobe Group development target proposed for the Blackback A-1, A-2, A-3 and A-2A wells.

Although abnormal pressure is not expected, all abnormal pressure parameters will be monitored from surface casing to TD. A full service mud-logging unit will monitor and plot parameters.

Notes: 1) A trip book is to be maintained for all trips in and out of the well with the drilling riser in place.
2) On trips in the hole, fill the drill pipe and break circulation every 25 stands.

3.4 Hydrogen Sulfide/Carbon Dioxide

Hydrogen Sulfide (H₂S) concentrations up to 400 ppm have been observed in the Terakihi well test samples, but have not been detected in any of the other wells drilled on the Blackback structure. Thus, it is considered unlikely that H₂S will be encountered in the A-3 well. Continuous monitoring of H₂S will be done from the 20" X 13-3/8" casing shoe to TD with mudlogging and installed H₂S detection equipment. Mud engineers will run a Garrett Gas Train, every 12 hours after entering the Latrobe, to monitor for H₂S, CO₂ and soluble sulfides. The well completion includes use of CRA materials to manage production in the associated sour and corrosive environment, in accordance with NACE MR-0175.

Carbon Dioxide (CO₂) may be present in small quantities (0.26-0.35%) based on the offset wells where no difficulties were experienced. Although SBM will be used, lime will be maintained onsite to treat out any CO₂ contamination problems.

3.5 Wellbore Stability

Hole instability problems are not anticipated until penetrating the Lakes Entrance formation. The Lakes Entrance is present across the Gippsland Basin and is characterized as a reactive shale, siltstone and claystone section with moderate surface areas ($150-250\text{m}^2/\text{g}\pm$). It is a highly water and time sensitive section where hole deterioration, mud rings, washouts, tight hole, excessive reaming and hole collapse have been observed frequently when drilling with WBM. These problems are more pronounced in deviated wellbores.

As an alternative to the water-base mud used on the previous offset wells, synthetic base mud (Petrofree) of the ester base family will be utilized for this well. This is based on highly successful results using it on EAL ERD platform wells nearby. It is being used to improve completion operations and eliminate the need for cemented 7" production liners. Petrofree has been successful in stabilizing even highly deviated wellbores across the Lakes Entrance, even with mud weights as low as 9.5-10.5 ppg, where water base mud in the past have sometimes required mud weights in excess of 11.0 ppg. Lower mud weight will be helpful when drilling through the Lakes Entrance and leaving it uncased while drilling the multi-darcy sandstone objectives in the Latrobe.

Hole instability will be managed by a combined chemical, mechanical and operational approach. The drilling fluid of 9.0-10.5 ppg Petrofree will be used to minimize the effects of shale and claystone hydration. Minimum mud weight guidelines will be utilized to maximize ROP and minimize the likelihood of differential sticking. A flow rate of $800-1000\pm$ gpm will be run in the 12-1/4" hole to maximize hole cleaning. A PDC bit/motor combination is proposed to assist in drilling this section as fast as prudent, while maintaining directional control, to minimize open-hole exposure time. Wiper trips will be conducted as required to minimize tight hole events based on true hole indications, with precautions taken on all trips to avoid swabbing or BHA sticking tendencies. Mud weight should be increased in stages at the onset of any formation instabilities.

Bridging in the shallow hole sections has been experienced in several Gippsland Basin wells while running casing. Normally, these bridges are encountered a short distance below the mudline (0-25m). Wiping the hole completely to the seafloor and displacing the entire wellbore with hi-vis mud in stages (to minimize the mud level drops while POH) is recommended to help prevent these shallow bridges.

Some minor unstable coal/volcanic sections have been encountered in offset wells. If required, this situation is handled with a combination of mud weight, increased cuttings carrying capacity, reaming and wiper trips. Usually the coal beds are relatively thin, but may require repeated reaming to break up coal chunks. Pyrite stringers are routinely encountered at the top of the Latrobe. PDC bits can be nursed through these stringers by limiting rotary speed (<80) and reducing WOB.

3.6 Hydrates

The formation of hydrates is a potential problem any deepwater location. Fortunately, none of these wells have experienced hydrate formation problems to date. However, in recent years, instances of hydrate formation in the BOP stack and other subsea equipment have been noted at several other offshore locations. In order to combat hydrate formation, the following steps are planned for this well where a seafloor temperature as low as $7\text{ }^\circ\text{C}$, $44\text{ }^\circ\text{F}$ is expected in the subsea BOP area:

Drilling Fluid: The non-aqueous Petrofree SBM (ester base) will suppress hydrate formation to enable gas kick circulation through the subsea BOP. The BOP stack will be circulated daily, down the choke and kill lines, to ensure they remain free. While the well is being drilled in the hydrocarbon objectives, a mud weight of 9.5-10.5 ppg will be maintained. This mud density provides 1.0-2.0 ppg over the maximum anticipated pore pressure.

Guidebase: A solid body Vetco Temporary Guidebase will be run. Gas percolation around the structural casing and conductor is diverted away from the subsea BOP stack because this unit is solid. Additionally, there is a hydrate seal on the BOP connector. No shallow hydrocarbon zones are expected.

Completion: The well completion is designed to prevent hydrate formation with the primary TR-SCSSSV being placed below the hydrate formation regime in the well. Production operations are designed to allow for methanol injection as needed to prevent hydrate formation during start-up and shutdown operations. A methanol slug will be pumped ahead of gas lift gas on initial displacement of the tubing X casing annulus.

3.7 **Deepwater**

The following steps have been taken to ensure this well can be drilled and completed considering challenges relevant to deepwater operations. Planned actions are given below under each particular challenge:

Wellhead Sinking: A string of 30" Structural Casing will be set at 500m± DF and cemented in 36" hole. The Vetco TGB will be run and provide additional bearing support against wellhead sinking; acting similar to a mud mat. Similar practices have provided acceptable results on offset wells with no wellhead sinking noted. No shallow water or gas flows have been experienced behind any shallow casing strings.

Shallow Hole Drilling: The well will be drilled riserless down to the 20" X 13-3/8" casing point, taking seawater gel sweeps and cuttings to the seafloor. This is the safest way to deal with any well control problems in deepwater, shallow hole sections (from a BOP equipment standpoint), which are not expected in this well nor found commonly in Bass Strait drilling. Basin-wide offset well experience does not indicate a need for pilot hole drilling.

Mooring: A computerized mooring analysis has been done, using Bass Strait marine conditions considered, on the proposed mooring system with 3" ORQ chain. Operating limits are not expected to exceed 50% of the mooring line breaking strength limit. The maximum anchor holding force expected is well within the predicted holding force of the 12 MT Stevpris anchors, hence piggybacking of anchors will likely not be required. A detailed mooring plan will be provided at a later date.

Riser Tensioning: As with mooring, a computerized riser analysis has been conducted to assess riser-tensioning guidelines required for the well. From this work, the tensioning required (400 kips) for riser stability with the proposed maximum mud weight is well within the limits of the rig equipment and provide contingency for the failure of one tensioner. The initial tension to be pulled on the riser will be specified later, with this tensioning not expected to be increased unless the mud weight rises above 10 ppg and/or vessel offset reaches 2% of the water depth or other marine conditions mandate additional tensioning.

Marine Vibrations: As current passes across a riser column, vortex shedding can cause the riser to vibrate. The effects of this are more pronounced at deepwater locations and especially in high current environments. The well plan provides for dealing with these vibrations in several manners. With the proposed 30" and 20" casing program, wellhead area rigidity is provided equivalent to that used at most deepwater sites world-wide. The first 30" casing joint will have 1.5" wall, a deepwater standard, and the 20" casing provided with 0.625" wall as well. This arrangement will assist in providing resistance to fatigue in the wellhead area. Also, the 30" and 18-3/4" wellhead assemblies will lock down together when the 20" casing is landed and this string is cemented to the mudline, providing additional resistance against vibration effects, as both the 30" and 20" casing strings will be cemented to the mudline. The completion riser is being evaluated in this area, including the effects of the near mudline cascade currents.

Well Control: Based on fracture gradient predictions for this site and offset wells, the 13-3/8" casing will be set so that its casing shoe will have formation integrity of at least 13.0-14.0± ppg. This is adequate for circulating out a gas kick relevant for Bass Strait area formations. Sufficient mud weight will be carried based on the geologic section to be drilled to prevent a gas kick considering historical pore pressures. The BOP stack will be function/pressure tested at the surface before it is run to the seafloor. The PIT limit above is adequate for cementing the surface pipe. The BOP will be circulated as pertinent before opening it to mitigate the effects of a riser kick and it will also have a means in place for ROV hot stab intervention to perform some stack functions subsea.

ROV: An ROV will be available on the rig to inspect the BOP stack and riser on a routine basis. The ROV will also perform other deepwater-related functions, as well as site clearance work and observing the well at the seafloor while drilling without the riser. During routine riser and BOP inspections, the ROV will survey the BOP package for indications of hydrate accumulations.

3.8 **Lost Returns**

No lost returns problems were experienced on the previous Blackback wells. The Gippsland Limestone has historically yielded higher fracture pressures than typical marine claystone formations. Based on these factors, no lost returns are anticipated in a conventional sense.

Some minor lost returns events have been experienced due to using the higher viscosity Petrofree mud. These losses have not been catastrophic in nature and dealt with in routine manners such as circulating to build filter cake, cutting the mud weight and spotting of LCM pills in some instances and adding of calcium carbonate to the mud system. Staging in the hole on trips will be utilized as necessary to break circulation in the Petrofree mud system which will typically develop higher gel strengths in lower temperature sections of the well after prolonged static conditions.

Minimum mud weight overbalances will be utilized when possible and with rheological properties and circulating rates monitored at all times to avoid losses. Mud properties will be run to promote filter cake formation with reasonable fluid loss levels run. LCM will be kept on location for spotting of any pills required in unusual circumstances, with the LCM to be onsite selected later during loadout planning work.

3.9 **Drawdown Formations**

The proposed Latrobe Group reservoir section is held in communication with other Bass Strait producing areas in the Latrobe Group aquifer. Hence the reservoir objective sands in this well may be drawdown, to as low as 7.9-8.4 ppg equivalent mud weight, as seen in other exploration wells in the area. Use of the Petrofree mud system in this multi-darcy interval should minimize differential sticking tendencies.

Drilling into the Top of the Latrobe Group should proceed cautiously when initially penetrating it to evaluate the risk of sticking through the monitoring of torque and drag parameters. Adequate BHA stabilization should be run at all times in this section and minimum BHAs used. The PETROFREE mud allows for the addition of calcium carbonate to act as a plugging agent as needed across the Latrobe sands.

3.10 Environmental Considerations

A detailed summary of the environmental conditions for the Blackback area is summarized in the Blackback Phase I Design Basis Memorandum and supporting documentation. A brief summary is given below:

1.	Maximum Significant Wave Height	10.1m
2.	99.9% Environment Wave Height	6.6m
3.	50.0% Environment Wave Height	1.7m
4.	Design Wind Speed Maximum	53.9 knots
5.	Typical Wind Direction	210-270° True
6.	Peak Wave Period	15.2 seconds
7.	Typical Wave Direction	210-270° True
8.	Maximum Operational Current	2.3 knots
9.	99.9% Environment Current	2.1 knots
10.	50.0% Environment Current	0.4 knots
11.	Design Minimum Water Temperature	7 °C/44 °F

Storms are typically from the southeast, south and southwest directions, with a maximum tidal surge for the area being 1.4m.

3.11 Other Drilling Experiences

1. Some gumbo has been experienced on several area wells while drilling in the Lakes Entrance horizons, which have resulted in gumbo attacks. Use of Petrofree mud should mitigate much of the problem. If gumbo problems persist, continue pumping until returns are free of gumbo slugs regardless of mud losses over the shakers.
2. A mud shearing system may be rigged up to assist mixing of mud chemicals to minimize chemical usage. Homogenizers have generally been proven ineffective in the region.

3.12 Drilling and Well Completion Risk Assessment Summary

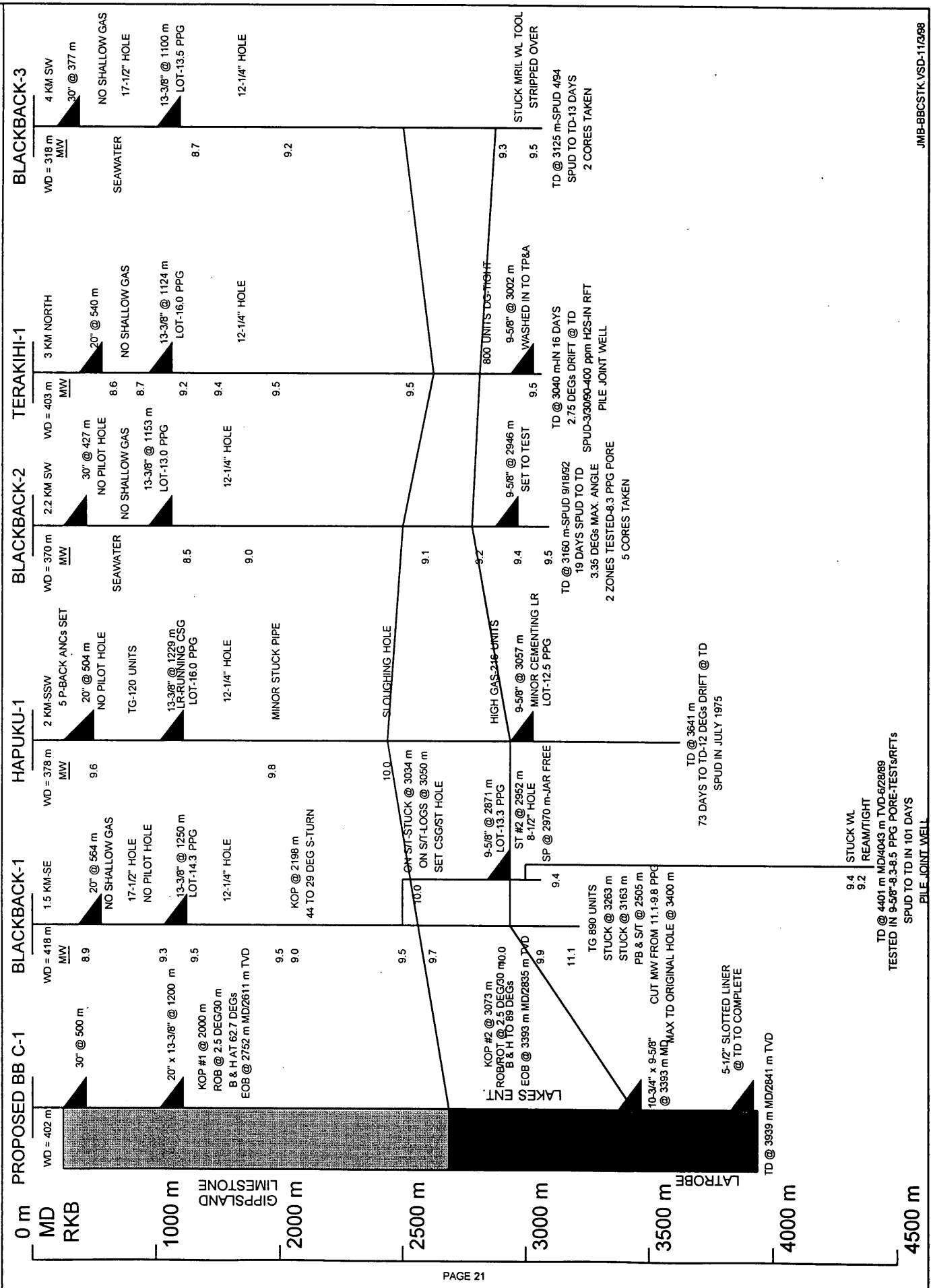
In October 1998, a Blackback Phase I Drilling and Well Completion Risk Assessment was conducted and considered operations on the Blackback A-3 as well. The primary goal of this risk assessment is to communicate the significant risk events involved with the entire operation to all members of the Blackback Subsea Drilling and Well Completions Team. Also, the safeguards that are needed (preventative and mitigating measures) to reduce the operational risk of the scenarios are identified.

The results of the risk assessment, including a list of follow-up items, will be approved and distributed to all members of the team. Personnel associated with, and responsible for, the drilling and completion operations are to review the risk assessment, as well as the Generic Floater Risk Assessment, and be aware of the hazard scenarios and the safeguards to be put in place to reduce operational risks. It will be the responsibility of the members of the team to ensure that the identified preventative and mitigating measures for each hazard scenario are in place and incorporated into drilling and completion operations. All of the identified follow-up items are to be completed prior to assignment of the rig to Esso, or as soon as possible thereafter.

Note: This well is to be drilled referencing the Esso Floating Drilling Operations Manual and Supplement, the EAL Platform Drilling Operations Manual (as applicable) and any Supplemental Programs issued.

FIGURE 4

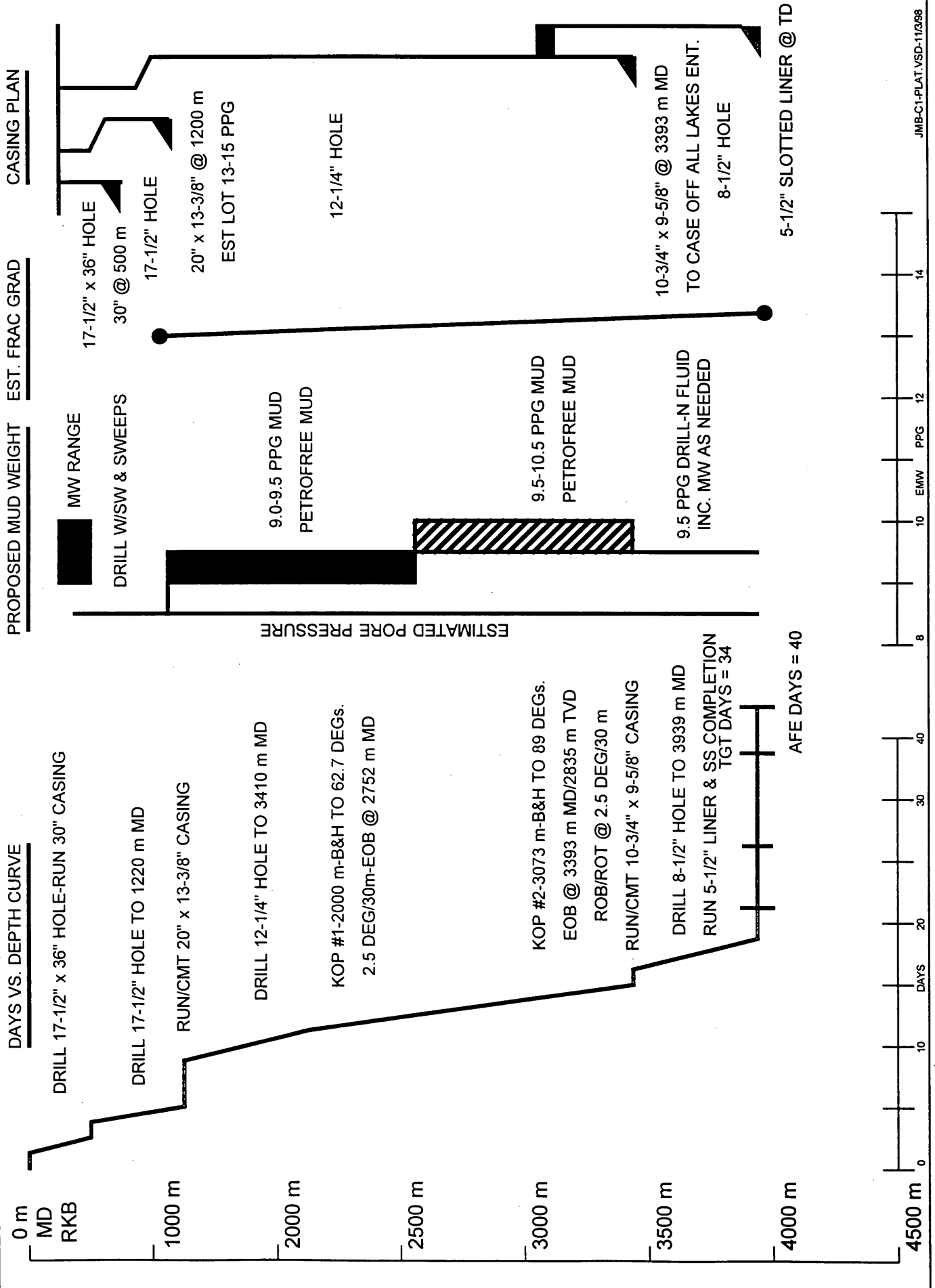
BLACKBACK C-1 OFFSET WELL STICK CHARTS



JMB-BBCSTK.VSD-11/3/98

FIGURE 5

BLACKBACK C-1 COMPOSITE WELL SUMMARY PLAT



4.0 Well Design & Engineering

4.1 Directional Survey Program

The Blackback A-3 well is to be drilled as an 89° Build & Hold, Near-Horizontal well with the following survey intervals:

Hole Size-Inches	Depth-m MD DF	Survey Interval-m	Survey Instrument
17-1/2" x 36"	428-505m	At TD-505m	Magnetic single shot
17-1/2"	505-1220m	At 300m Intervals-Drlg. 30m-multishot w/POH	Electronic multishot dropped on TD TOH
12-1/4"	1220-3073m 3073-3410m @75° (3220m± MD)	At 30m Intervals At 9m Intervals At 30m Intervals	Anadrill MWD Anadrill MWD Inside DP-Gyro
8-1/2"	3410-3939m-TD	At 9m Intervals	Anadrill MWD

The heel landing target is defined by a 50m radius circle centered at 770m South and 570m East (X = 635,916m E, Y = 5,732,113m N) of the proposed surface location and at 2835m TVD DF. This is on a 144.3° azimuth heading from the proposed surface location. The toe target is defined by a 50m radius circle at 1180m South and 866m East (X = 636,212m E, Y = 5,731,703m N) and at 2841m TVD. This is on a 144.1 azimuth from the proposed surface location.

MWD surveys will be taken continuously while drilling. Stationary surveys will be taken every 30m once the 62.7° hold angle has been established after the initial angle building. All MWD surveys in the Latrobe to TD are to be taken on the while drilling. A program for four point roll tests should be established with at least one check depth set in the 12-1/4" and 8-1/2" hole sections.

The above survey program is preliminary subject to the establishment of the first three wells in the batch setting program. Once the three wells have been established, A-1 and A-2/A-2A through 20" casing and A-3 through 20" x 13-3/8" casing, wellbore collision avoidance can be assessed, spider plots drawn and the final wellbore surveying needs assessed. This could include use of some gyro single shot surveys to kick-off depending on the likelihood of magnetic interference and wellbore intersection. No jetting is anticipated at this time and it is not anticipated for the A-1 or A-2/A-2A wells to require being shut-in depending on wellbore separation when the A-3 is drilled in its shallow section below 20" x 13-3/8" surface casing to KOP #1. The well intersection spider plot should be updated after the actual batch setting and drilling of the A-1 and A-2/A-2A wells, individually.

The Scientific Keeper Gyro is to be used for the run planned in the well as noted above. Gyro tools specifically selected for high accuracy TVD control should be used with a QC program prepared specifically for this well. Provide the pertinent equipment (pump down plugs, etc.) for high angle use.

4.2 Casing Program

Size	Depth-m MD DF	Nominal ID	Drift ID	Weight ppt	Grade	Conn.	Burst Rating psi w/DF	Collapse Rating psi w/DF	Tension Rating Pipe-kips w/DF	Tension Rating Con.-kips w/DF	Max. Calc'd Burst psi	Max. Calc'd Collap. psi	Max. Calc'd Tension kips	Burst Design Df	Coll. Design Df	Tension Design Df PB/Conn.
30"	426-438	26.970"	26.500"	457	X-52	RL-4-HT +	3479	3904	5251	4160	N/A	N/A	70	1.375	1.0	1.33/1.50
	438-500	27.500"	26.500"	310	X-52	RL-4	2319	1631	3562	3066	N/A	N/A	54	1.375	1.0	1.33/1.50
20" x	425-437	18.630"	18.442"	129.3	X-56	RL-4S	2341	1449	1602	1200	2237	600	153	1.375	1.0	1.33/1.50
13-3/8"	437-1200	12.415"	12.259"	68	K-55	BTC	2509	1950	803	866	2223	1740	148	1.375	1.0	1.33/1.50
10-3/4"	425-1100	9.760"	9.604"	55.5	L-80	VAM TOP	4690	3247	959	850	3321	1876	419	1.375	1.238	1.33/1.50
9-5/8"	1100-2200	8.681"	8.525"	47.0	N-80	LTC	4996	3845	816	603	3321	3750	290	1.375	1.238	1.33/1.50
	2200-3393	8.535"	8.500"	53.5	N-80	LTC	5767	5347	935	709	3321	4821	120	1.375	1.238	1.33/1.50
5-1/2"	3044-3939	4.892"	4.767"	17.0	S13 Cr-80	Vam-Acc	6192	5591	298	264	N/A	4112	18	1.25	1.125	1.33/1.50
4-1/2"	425-3100	3.958"	3.833"	12.6	S13 Cr-80	Vam-Acc	6744	6667	216	216	3321	4102	75	1.25	1.125	1.33/1.33

- Notes:
1. Alternative weights, grades and connections may be substituted as long as they meet the design constraints. Make-up torques will be provided in any supplement procedures issued.
 2. All casings to be run using Best-O-Life 2000 Thread Compound, except for the 10-3/4" which requires a metallic base API Modified thread compound such as Threadkote 706 to seal.
 3. All calculated design loads are below the burst, collapse and tension ratings for the above tubulars, including derating for the safety factors shown. Verify running string loads before use.
 4. The 20" x 13-3/8" casing burst design is based on a full column of gas in 12-1/4" hole assuming a 15.0 ppg leak-off at the 13-3/8" shoe.
 5. Casing test pressures are 20" x 13-3/8" (2300 psi) and 10-3/4" x 9-5/8" (5000 psi). The 13-3/8" shoe is good for a 1.0 ppg, 50 bbl kick from TD w/9.5 ppg mud at the time.
 6. PIT test to be taken to leak-off on the 20" x 13-3/8" casing shoe. Expected leak-off is 13.0-15.0 ppg.
 7. Premium connections to be made up using the manufacturer's guidelines and approved thread compound.
 8. Ensure all O-rings are run in the pertinent Vetco connectors and all shear tabs are installed in their threaded connections.
 9. The 30" casing is to be run to stick-up 2.37m above the mudline and 18-3/4" wellhead to be 3.16m above the mudline when landed.
 10. The 10-3/4" hanger will be locked in place when run in the MS-700 wellhead system with its weight set feature and with a 13-3/8" dummy hanger below it.
 11. Run 30" casing top to bottom as 30" WH Jt (w/RL-4HT), 2 x 30" 1" Wall Jts (w/RL-4HT), 30" 1" Wall RL-4-HT x RL-4 XO, 30" 1" Wall Jt RL-4 and 30" 1" Wall x Shoe Jt RL-4.
 12. The 20" x 13-3/8" casing string has one joint of 20" 129.3 ppf X-56 RL-4S Casing below the 18-3/4" wellhead with a swedge to 13-3/8" casing to be run below it.

4.3 Wellhead Program

A Vetco 18-3/4", MS-700 10,000 psi Wellhead System will be utilized for this well, with the highlights of the system as follows. The wellhead system is rated for H₂S service in accordance with NACE MR-0175.

1. A conventional Vetco Temporary Guidebase (TGB) will be utilized and will be the first assembly run when commencing well operations. This TGB will be fitted with two acoustic transponders welded onto it to track its position from the rig while running it to the seafloor to ensure it is placed within the 2.5m radius seafloor placement target for the wellhead assembly. Well cuttings and cement from the 30" hole section and casing job will be allowed to accumulate over the TGB, and will be dispersed by seafloor currents. The rig guidelines will be attached to this assembly when it is run to the seafloor. A bullseye will be run on the TGB.
2. The 30" casing will be fitted with a low-pressure 30" MS-700 Wellhead Assembly with 4 locator grooves for the Completion Guidebase (CGB) to be fitted over. Below the top of this wellhead, a gimble is fitted and clamped around the wellhead assembly to land on the TGB at the proper elevation. The top of the 30" wellhead assembly is to be placed 2.37m above the mudline for proper tie into the production facilities. Measurement of the angle on the 30" casing and orientation of the locator grooves for final CGB positioning is accomplished by a) a slope indicator and b) an ROV orientation tool utilizing a gyro.
3. An 18-3/4" 10,000 psi MS-700 High Pressure Wellhead will be run on top of the 20" X 13-3/8" casing and installed with its nominal seat protector (long wear bushing) in place. It will have an H-4 connector on its top profile. One trip weight set hanger and pack-off assemblies will be used inside this wellhead. This is a conventional wellhead assembly with no special modifications made to it for this project. When the 20" casing is cemented, the cement returns will be directed out 2 x 3" cementing ports in the 30" wellhead housing assembly and out over the TGB to be dispersed by seafloor currents.
4. The Completion Guidebase (CGB) will be run and landed at the seafloor after the 20" x 13-3/8" casing is run and cemented with the 18-3/4" wellhead in place. It is fitted with 4 removable posts, which will stay in place for the life of the well, but can be removed if damaged. The SS BOP and Completion Tree will be fitted over this base during the course of the well. The post tops are fitted to accommodate Regan GL-4 guideline overshots, which will be used to return to A-3 after the batch setting operation and drilling of the A-1 and A-2/A-2A wells. The CGB has orienting fins which will line up with the grooves on the 30" housing assembly to line up properly when installed and pull tested. Before the CGB has been installed on the well, the TGB guidelines will be cut using the ROV for moving to the A-2/A-2A well. After the CGB is in place a TP&A cap will be installed on the A-3 well before the rig moves to the A-2/A-2A site. The guidelines will be re-established when returning to this well using the Regan GL-4 overshots. Its frame allows for running and /orientation of the completion tree and other production equipment.
5. The 10-3/4" Casing Hanger and Pack-Off run on this well will be a conventional MS-700 unit, with a dummy 13-3/8" hanger run below it. The 10-3/4" Casing Hanger and Pack-Off utilized will have Inconel 925 inlay in its upper body section and inner top section where it will seal with the tubing hanger. The tubing hanger will be dual bore 4" (production) x 2" (annulus-gas lift) with four-1/4" ports for the SCSSSVs, production and annulus bores, and a fifth port for the electrical downhole gauges. The subsea tree will be a dual bore 5" (production) x 2" (gas lift) 5000-psi tree, rated for H₂S service.

4.4 Drilling Fluids Program

A. Water Base Mud Systems

Hole	Depths-m MD	System	MW PPG	PV cp	YP Lb/100 ft2	Gels 10s/10m	API WL cc/30 min	pH	%LGS	Total Solids-%
17-1/2" x 36"	428-505	Seawater/Sweeps	8.5+	N/C	N/C	N/C	N/C	N/C	N/C	N/C
17-1/2"	505-1220	Seawater/Sweeps	8.5+	N/C	N/C	N/C	N/C	N/C	N/C	N/C

B. PETROFREE Ester Base Mud

Hole	Depths-m MD	System	MW PPG	PV cp	6 RPM Reading	HTHP @ 250° F (ml/30m)	Electrical Stability (volts)	Excess Lime (ppb)	Chlorides mg/l	LG Solids-%
12-1/4"	1210-2500	PETROFREE	9.0-9.5	<30	9-12	<6	>500	0.5-1.0	200,000	<6%
	2500-3410	80/20 Ester WR	9.5-10.5	<35	9-12	<6	>500	0.5-1.0	200,000	<6%
8-1/2"	3410-3939	BARADRIL-N	9.5	<35	8-12	<5	N/A	0.5-1.0	200,000	<6%

Notes:

- Run HTHP on the PETROFREE mud at 120° C, 500 psi. Run GGT every 12 hours on mud checks below 3000m for H₂S, CO₂ and soluble sulfides. Additional mud weight may be required to combat formation instabilities, especially in the Lakes Entrance formation. Run the finest mesh screens practical on the shakers at all times and run the centrifuges at all times for fine solids discharging. Weight up only as required.
- All mud checks must conform to the latest edition of API RP 13B-1 and "Exxon Water & Ester Base Mud Testing Guidelines". Report "in" and "out" mud properties, corrected for lag time. Run PV, YP and 10-sec/10-min gel strengths at 120° F. Report all mud losses, discharges and the amount of water/ester additions. Measure and report chlorides and calcium content of the make-up waters.
- Measure alkalinities/pH w/a pH meter and keep calibration references onsite for all mud testing equipment. Run Aw <0.75 with Ester.

PETROFREE Ester Mud	
PETROFREE Ester (0.74 bbl/bbl)	Fresh Water (0.17 bbl/bbl)
EZ-MUL NTE (8 ppb)	RM-63 (1.0 ppb)
DURATONE HT (8 ppb)	OMC-42 (0.5 ppb)
GELTONE II (2 ppb)	CaCl ₂ -78% (37 ppb)
Lime (1.25 ppb)	Barite (As Required)

BARADRIL-N	
KCl	BARACIDE
DEXTRID LT	BARACOR 129
BARACARB 5	BARAZAN D Plus
BARACARB 50	Caustic
Sodium Bicarbonate	Citric Acid

4.5 Bit and Hydraulics Program

Hole Size	Interval-m MD	Bit Type	IADC Code	Nozzles (32nds)	WOB Kips	RPM	GPM	Pump Pressure-psi	DP AV fpm
17-1/2" x 36"	428-505	SS33SGJ4 Center Jet	1-1-5	3 x 20, 16C HO-Open	0-5	50-150	250-800	800-1100	19
17-1/2"	505-1220	SS33SGJ4 Center Jet	1-1-5	3 x 20, 16C	0-25	50-150	800-1200	1500-3200	45
12-1/4"	1210-3073	BX536 (Baker) PDC	S 4-3-2	4 x 20 4 x 22	0-40	80-300	800-1000	3600	158
12-1/4"	3073-3410	05-MF (Smith)	4-2-7	3 x 24	0-45	80-180	800-1000	4150	158
8-1/2"	3410-3939	DS-111 HG (Hycalog)	M 4-3-3	8 x 12	0-30	80-180	500-600	3400	339

Notes:

- Mud pumps are 3 x Oilwell A-1700 PT and 6-1/2" liners are assumed installed for use to 3200 psi through 17-1/2" hole, then with 6" liners used in 12-1/4" hole at its start, capable of being run at 3600 psi. Liners of 5-1/2" are needed for the 12-1/4" hole final build section, and can be left in for the 8-1/2" hole section. Continue drilling with the DS-107 bit as long as angle building and directional control is ok.
- Bits types and parameters are from offset reviews and intended to serve as a guide. Run low WOB to spud and start the well straight.
- For all wells, use one 17-1/2" bit with the 36" HO, one 17-1/2" bit with the 26" HO and one new bit on each of the three 17-1/2" hole sections.
- Resize nozzles based on onsite conditions and pump performance, including on bottom loadings.
- Optimize bit weight and rotary speed as prudent using drill-off tests and rerun them as needed.
- Deeper in the 12-1/4" hole, consideration should be given to laying out some HWD, Motor, etc. components to improve hydraulics and depending on the directional and hole cleaning performance in the actual well, and field circulating rates.

4.6 Cementing Program

Hole	Casing	Depth-m MD	Slurry Type	Slurry Volume	O. Hole Excess	Slurry Wt-ppg	Yield cf/sx	Mix Water	BHST °F	Additives	Comments
36"	30"	428-500	Tail	1130 sx (232 Bbls)	150%	15.8	1.15	Seawater 5.0 gps	45	2% CaCl2	Through Inner 5" DP Cementing String with returns to the mudline. 10' in Shoe.
17-1/2"	20" x 13-3/8"	428-1200	Lead	1200 sx (470 Bbls)	50%	12.5	2.21	Seawater 12.5 gps	105	0.45 gps Econolite	Cement to Seafloor Plus Float Area. Use Top Wiper Plug
12-1/4"	10-3/4" x 9-5/8"	2500-3393	Lead	520 sx (106 Bbls) 300 sx (113 Bbls)	50%	15.8	1.15	Seawater 5.0 gps	105	Neat	6-Cent/4 S. Collars Use 152m Tail
			Tail	300 sx (61 Bbls)	None	12.5	2.10	Fresh 12.2 gps	194	Retarder Extender	Dual Wiper Plugs Centralizer & Stop Collar Program to be Provided Later with Final Cement Blend. Use 300m Tail.

Notes:

1. PDC Drillable Float Equipment and Wiper Plugs and Darts to be used for the 20" x 13-3/8" and 10-3/4" x 9-5/8" casing jobs (non-rotating type). One top plug only is to be used for the 13-3/8" casing job. Top and bottom plugs to be used for the 10-3/4" x 9-5/8" casing job.
2. All cement designs noted here are preliminary and may be revised based on actual well conditions encountered, field blend testing and actual cementing depths. Ensure all applicable pilot/field blend tests are run for all cementing jobs.
3. All cement volumes to be recalculated prior to each job, using any caliper logs available and well actual static/circulating temperature data.
4. A detailed casing and cementing program will be issued for each casing job.

4.7 Bottom Hole Assembly Program

A. Spud Through Initial Build Angle Section

<p>17-1/2" x 36" Hole 17-1/2" Tri-Cone Bit 36" Hole Opener Float Sub (FS) w/Non-Ported Float 1-36" Welded Stabilizer 1-8" Non-Magnetic Drill Collar 5-8" Steel Drill Collars 12-5" HWDP 5" 19.5 ppf S-135 DP</p>	<p>17-1/2" Hole 17-1/2" Tri-Cone Bit Bit Sub (BS) w/Non-Ported Float 1-8" Non-Magnetic Drill Collar 1-8" Steel Drill Collar 1-17-1/2" Welded Blade Stabilizer 8-8" Steel Drill Collars 8" Jars-Hydraulic 12-5" HWDP 5" 19.5 ppf S-135 DP</p>	<p>12-1/4" Hole-Drill-Out/Kick-Off BHA 12-1/4" PDC Bit 9-5/8"-A962XP Motor-1.15°-12-1/8" UBHS Float Sub (FS) w/Non-Ported Float 11-1/2" String Stabilizer 8" Non-Magnetic Pony Drill Collar 8" Power Pulse HF MWD Section 1-8" Non-Magnetic Drill Collar 3-8" Steel Drill Collars 8" Jars-Hydraulic 21-5" HWDP 5" 19.5 ppf S-135 DP</p>
<p>XOs not shown-Run Totco Ring Above Stab XOs not shown-Run Totco Ring Above BS XOs not shown-Run Orient. Sub above MWD</p>		

Overpull Designs

<p>17-1/2" x 36" Hole Mud Weight-8.5 ppg Total Bouyed Weight BHA/HWDP-40 kips Total Bouyed Weight Drillpipe-21 kips Total Bouyed Weight Drillstring-61 kips 5" 19.5 ppf S DP Tensile Yield-560 kips Total Remaining Overpull-499 kips</p>	<p>17-1/2" Hole Mud Weight-8.5 ppg Total Bouyed Weight BHA/HWDP-60 kips Total Bouyed Weight Drillpipe-63 kips Total Bouyed Drillstring Weight-123 kips 5" 19.5# S-135 DP Tensile Yield-560 kips Total Remaining Overpull-437 kips</p>	<p>12-1/4" Hole-Drill-Out/Kick-Off BHA Mud Weight-9.0 ppg Total Bouyed Weight BHA/HWDP-54 kips Total Bouyed Weight Drillpipe-195 kips Total Bouyed Drillstring Weight-249 kips 5" 19.5# S-135 DP Tensile Yield-560 kips Total Remaining Overpull-311 kips</p>
--	--	--

B. Final Build & Production Hole Sections

Hole Size	Depths in MD	BHA Description	Comments
12-1/4" Final Build	3073-3410	12-1/4" Tri-Cone Bit/9-5/8" A962XP Motor-0.78° w/12-1/8" UBHS/F. Sub/ 11-1/2" String Stab/LWD-CDR/8" Power Pulse HF MWD/11-3/4" String Stab LWD-CDN/1-8" NMDC/1-8" SDC/8" Jars/ 21-5" HWDP/5" 19.5 ppf S-135 DP to Surface (Run Orienting Sub Above CDN)	Final Build from 62-89°. Can Run HWDP/DP in Compression. Ten. Margin-329 kips Tor. Margin-15k ft/lbs
8-1/2" Hold Angle Production Hole	3410-3939	8-1/2" PDC Bit/8-1/2" NB Stab Bored for Float/6-3/4" Pony NMDC/ Sperry-Sun AGS/LWD-CDR/8-1/2" String Stab/6-3/4" Power Pulse MWD/ LWD-ADN/6-3/4" Jars/18 Stands 5" 19.5 ppf S-135 DP/30-5" HWDP/5" 19.5 ppf S-135 DP to Surface (Do Not Run Orienting Sub)	To Hold Angle/Log. Can Run HWDP/DP in Compression. Ten. Margin-316 kips Tor. Margin-14k ft/lbs

Notes:

1. Premium Class DP is to be used. Run Spiral DCs for all BHAs. HWDP/DP/Jars can be run in compression in 12-1/4"/8-1/2" holes.
2. Ensure hydraulic jars are set, for compressive service, by the supplier in advance. Use trip book for all trips. Have Sperry AGS onsite.

4.8 Drill Collar Properties

Tube OD	Tube ID	Wt.-ppf	Wt-31 ft.	Conn. OD	Type	BSR	M/U Torque-ft/lbs	DC1 OD	DC2 OD	Stiffness Ratio
8"	2-13/16"	150.0	4650	8.00"	6-5/8" Regular	2.60	53,000	8"	5" HW	4.63

Notes:

1. Exxon Recommended BSR Design: $2.25 \leq \text{BSR} \leq 2.75$. API RP-7G Acceptable BSR Range: $1.90 \leq \text{BSR} \leq 3.20$.
2. Torque Values for Non-Magnetic DCs should be 85-90% of values. Exxon Recommended Stiffness Ratio: $\text{SR} \leq 5.5$.
3. M/U Torque for 7-5/8" Reg. Bits is 34,000-40,000 ft-lbs. M/U for 6-5/8" Reg. Bits is 28,000-32,000 ft-lbs.
4. M/U Torque for 5" HWDP is 29,500 ft-lbs. Stabilizers to be of the open wrap design (270° Wrap).

4.9 Well Control Equipment and Testing

Casing	Section	Top Flange	Casing Burst (psi)	MASP (psi)	Subsea BOP Stack Installed	BOP Size & Rating	Annular Test* (k psi)	Pipe Ram Test* (k psi)	Blind Ram Test* (k psi)	Choke & Kill Lines/Valves Test (k psi)	Choke Manifold Test (k psi)
30"	Riserless	30" WH	2319	N/A	N/A	N/A	N/A	N/A	N/A	N/A	N/A
20" x 13-3/8"	12-1/4"	18-3/4" 10k psi	2341	2237	2-Annular 4-Rams	18-3/4"-5k 18-3/4"-10k	2.5/2.3	2.3/2.3	2.3/2.3	3.5/2.3	3.5/2.3
10-3/4" x 9-5/8"	8-1/2" & Complete Well	"	4690	3321	"	"	3.5/3.5	5.0/5.0	5.0/5.0	5.0/5.0	5.0/5.0

Notes:

* Upon initial installation on the subsea wellhead, the annular and pipe rams shall be tested to the maximum test pressure that component will be subjected to during drilling operations. Initial annular test pressure is 3,500 psi. Initial pipe ram test pressure is 5,000 psi.

1. Pressures shown above are Initial Nipple-Up/Subsequent Test. Precede all high-pressure tests with a 200-psi low-pressure test.
2. The BOP Stack Ram Arrangement is to be Top-Blind/Shear, UPR-3-1/2" to 7-5/8" VBR, MPR-5" Pipe, LPR-5" Pipe.
3. Pressure test frequency: 1) At nipple-up, 2) Every 14 days, 3) Each new tubular string run.
4. All tests must be held stabilized for a minimum of 10 minutes. Test choke manifold out of the critical path.
5. Test blind rams against the casing in the well during the casing test.
6. After installation of the riser, pump through the diverter system and test it for leaks.
7. Stump test BOP stack to its full rated working pressures with water before running it, if possible.
8. Pressure testing of the BOP stack to be alternated between subsea control pods and function the stack on the other pod.

5.0 Drilling Operations Sequence

Note: Supplemental procedures will be issued for each phase of the operation.

5.1 Move-On and Rig-Up

1. Position the rig by readjusting the moorings from the Blackback A-3 to the Blackback A-2A well with a bow heading of 210° True and within 5m of the call location. Place the rig as close to the call location as possible and practical using the onsite rig positioning company and rig positioning QC representative. The mooring arrangement and anchor line operating tensions to be as established with the detailed mooring procedure issued for the Blackback Phase I Development. P/U the 17-1/2" x 36" Hole BHA specified in the Bottom-Hole Assembly Program and complete as many items out of the critical path as practical, such as pick-up of the DP for TDS use, etc.
2. M/U the Vetco TGB with the acoustic transponder and slope indicator mounted on it and TGB running tool assembly. Run and Set the Vetco TGB at the mudline on 3/4" rig guidelines shackled to it using the Vetco running tool assembly, monitoring its descent to the seafloor on the acoustic receiving equipment from the rig. Land the TGB within 1m± of the call location and confirm it. Once the onsite positioning staff are satisfied with the position of the TGB, release from it and POH with the TGB running tool assembly. Note and report the inclination reading on the TGB from the bullseye on it.

5.2 17-1/2" x 36" Hole/30" Structural Casing (0-505m)

1. M/U 17-1/2" Bit/36" HO BHA and RIH to mudline. Spud well and drill to 505m± (for 2.37m± stick-up) using seawater and gel sweeps, taking returns to the seafloor. Monitor for hole washout, shallow gas and cuttings dispersion using the ROV to observe in the wellhead area and to ensure the drillstring spuds as straight as possible. Use very little WOB when drilling the first few meters and mainly RPMs as there is a near mudline hard streak in some Bass Strait areas which causes some wells to drill this hole section deviated. Take a magnetic single shot at TD. Hole angle to be 1-1/2° or less.
2. Sweep hole and perform a wiper trip to the mudline. Do not pull the hole-opener out of the hole. Spot hi-vis mud in the well to run casing while POH in stages. Ensure TGB has not settled and remains at an acceptable angle to run casing. L/D the 36" Hole BHA components when POH. TGB inclination to remain at 3-1/2° or less at all times.
3. Run and cement the 30" casing at 500m with the 30" wellhead top and elevator gimble at 2.37m± above the mudline (gimble landed out on the TGB) and at an inclination of 1.0° or less. The elevator gimble is to be clamped around the 30" before it is run just below the 30" wellhead. The 30" WHRT is to be fitted with an inclination bullseye and ROV orienting post on its tool joint for use subsea. Run a 5" DP stinger below the 30" WHRT inside the 30" casing to 50'± above the 30" shoe. The orienting grooves on the 30" wellhead housing must be oriented relative to the ROV orienting post at the surface before the assembly is run subsea. Use adequate softlines to run the 30" casing. Land the 30" casing with the 30" WH landed on the TGB and read the inclination on the bullseye and orientation on the ROV post and orienting grooves and ensure acceptable readings are obtained.
4. Cement the 30" casing by pumping down the 30" running string and through the 5" DP stinger and 30" shoe, leaving 20' of cement inside the casing string and cement in the annulus to the mudline. Displace with seawater. Monitor cement returns with ROV. WOC 2± hours, keeping the 30" as straight as possible. Before releasing the 30" WHRT, confirm the final inclination and ROV orientation post readings from the WHRT. Release the assembly and POH with the running string. Verify the final wellhead stick-up and report it on the DDR.

5.3 17-1/2" Hole/20" x 13-3/8" Surface Casing (505-1220m)

1. M/U the 17-1/2" BHA with SS33SGJ4 bit and RIH and drill out cement in the 30" casing. Drill ahead riserless to 1220m using seawater and sweeps as required for hole cleaning. Observe for shallow gas and cuttings dispersion in the wellhead area with the ROV. Upon reaching 1220m, pull a wiper trip to the 30" shoe, RIH and drop an electronic multishot survey tool in the well to survey at 30m stations while POH. Fill the hole with hi-vis mud in stages while POH and recover and download the multishot tool.
2. Run the 20" x 13-3/8" casing, with the 18-3/4" 10,000 psi Vetco MS-700 Wellhead, to 1200m±. Install SSR plug set below the casing hanger running tool into the 13-3/8" casing. Use PDC Drillable float equipment and a single SSR plug set (top plug only) and dart. The plug set should be PDC drillable and non-rotating equipment. Ensure the nominal seat protector is installed. Latch the 18-3/4" Wellhead into the 30" Wellhead and test pull the latch to 50 kips. Cement it to the mudline. Displace the cement with seawater. Verify 18-3/4" wellhead stick-up, which should be at 3.16m± and report it on the DDR.
3. Cut the 3/4" rig guidelines at the TGB and recover them. Run and latch the Vetco Completion Guidebase (CGB) over the 30" Wellhead Housing with its running tool and using ROV assistance. Pull test the CGB latch to 20 kips. POH with the CGB running tool assembly.
4. Run and set the Vetco 18-3/4" TP&A Corrosion Cap on 5" DP/WL and land it in place over the 18-3/4" wellhead. While POH with the Corrosion Cap running tool assembly, commence moving the rig over the Blackback A-2/A-2A well, complete rig positioning and batch setting of the 30"/20" casings here.

5.4 12-1/4" Hole/10-3/4" x 9-5/8" Production Casing (1220-3410m)

1. Once the Blackback A-1, A-2/A-2A wells are completed, reposition the rig back over the A-3 well at its original heading of 210° True by adjusting the moorings and reset the anchor line tensions as needed. While completing the final rig positioning, RIH and recover the Vetco 18-3/4" Corrosion Cap on 5" DP or WL. Attached the 3/4" rig guidelines into the Regan GL-4 overshots and run all 4 guidelines out on a running frame and stab them over the CGB post tops using the ROV to transfer them from the frame to the post tops (or run them hung below BOP posts). Pull a 7-10 kip tension on each of the lines to ensure they are securely latched and POH with the guideline running frame assembly, if used.
2. Move the 15m NNE (330° heading from location) to run LMRP. Reposition rig over well location. Run the 18-3/4", 10,000-psi BOP stack and riser. Function and pressure test the BOP equipment to 200/3500 psi. Test the 20" x 13-3/8" casing, BOP WH Connector and Shear Rams to 2300 psi. Function test the diverter system. Follow Sedco/EPR riser tensioning guidelines starting with an initial tension as mutually agreeable to Esso and Sedco. Record the weight of the BOP stack, LMRP and entire system with riser, in the water, before the BOP stack is landed on the wellhead.
3. P/U the 12-1/4" Hole Directional Drilling Motor BHA with a PDC Bit as specified in the Bottom Hole Assembly and Bit Programs and RIH to tag the TOC inside the 20" x 13-3/8" casing. Pump through the diverter system with seawater. Drill out the 20" x 13-3/8" shoe while displacing the hole with 8.7-9.0 ppg PETROFREE Ester-base SBM. Drill 3m of new hole, spot a gelled pill on bottom and conduct a PIT to a maximum EMW of 14.5 ppg. The mudloggers must be rigged up to commence mudlogging operations by the commencement of this hole phase.

4. Directionally drill the well from a 2000m MD kick-off point and build angle using the motor BHA at 2.5°/30m from 2000m MD to 2752m MD, where a total deviation of 62.7° is to be reached while drilling at an azimuth of 144.3° degrees True. Make an additional 321m± of tangent hole while holding angle at 62.7° degrees and 144.3° azimuth to reach 3073m MD\2758m TVD (KOP #2). At this point continue to build angle to 3393m MD/2835m TVD, where an inclination of 89° is to be reached. The heel target is at 770m south and 570m East of the surface location. Make an additional 17m of hole (casing rathole) to 3410m MD holding angle and azimuth. Drill this hole section using 9.0-10.5 ppg PETROFREE mud. Take MWD surveys at least every 30m and on the fly as often as practical. Use the maximum flow rate obtainable without, producing mud losses over the shakers, to keep the hole clean. Plot torque and drag on the rig to assess need for wiper trip(s), which will be done based on hole conditions. Weight up the mud system only as mandated by hole instability problems, but have at least 10.0 ppg mud weight by 2500m MD before the well enters the Lakes Entrance formation, which is predicted at 2678m± MD. Raise MW, up to 10.5 ppg, only if needed for hole stability. Add BARACARB to the mud system only if mud seepage losses occur in the Latrobe. Use the spider plot developed after the A-1/A-2 wells and gyro single shots to drill-out of the 20" x 13-3/8" casing and ahead, as needed. A Scientific Keeper Gyro is to be run inside the drillstring when the well is drilled to an angle of 75°±. The final well build to 89° should be adjusted based on normalizing the gyro/LWD surveys for TVD control.

Note: POH upon reaching the 3073m± MD KOP #2 or 300m± MD above the correlated Top of Latrobe Group. Pick up the 12-1/4" Tri-Cone bit for landing the well into the heel target as noted above. Also, pick-up the BHA specified including the LWD-CDR and LWD-CDN tools along with the Motor/MWD tools. Hydraulics considerations may mandate laying out some HWDP, etc. at this time. Continue drilling the well with LWD and penetrate the wellbore heel target (3393m MD\2835m TVD) as close to the center as practical. Survey at 9m intervals on the fly as much as possible in the final build section and pump up to 900-1000 gpm as practical. Monitor the position of this well relative to the Blackback-1 well while drilling ahead.

5. Upon reaching total depth for 12-1/4" hole, circulate the hole clean with a highside toolface. Pull a wiper trip to the 20" x 13-3/8" shoe. RIH, circulate the hole clean and condition the mud to run casing. Pump a 100 Bbl hi-vis sweep and circulate the hole clean. Strap out of the hole and confirm with the onsite geologist the LWD logs are acceptable and the wellbore can be cased.
6. Run and cement the 10-3/4" x 9-5/8" casing at 3393m± MD using a Vetco MS-700 10-3/4" Hanger and Weight set Seal Assembly with 13-3/8" Hanger Dummy Section. Use PDC Drillable float equipment and a dual 10-3/4" x 9-5/8" tapered SSR top & bottom plug set with ball and dart (to be PDC drillable as well and non-rotating equipment used). Set the seal assembly and pressure test the seal assembly and BOP stack to 200/5000 psi. Test the 10-3/4" x 9-5/8" casing against the blind rams to 5000 psi. The PETROFREE mud is to be recovered from behind the 10-3/4" x 9-5/8" casing by pumping SW mud ahead of the cement.

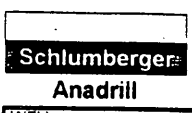
5.5 8-1/2" Hole/5-1/2" Slotted Production Liner (3410-3939m)

1. P/U the 8-1/2" Hole Drilling BHA (no motor) with the Sperry-Sun AGS, LWD tools and Hycalog DS-111 PDC Bit as specified in the Bottom Hole Assembly and Bit Programs. RIH to tag the TOC inside the 10-3/4" x 9-5/8" casing. Drill out the 10-3/4" x 9-5/8" casing with 9.5 ppg BARADRIL-N fluid. Drill ahead without conducting a PIT/LOT.

2. Drill ahead to TD from 3410m MD to 3939m MD/2841m TVD, holding a total deviation of 89° and well azimuth at 144.1° to hit the toe target at 1180m south and 866m East of the surface location. Drill this hole section using 9.5 ppg BARADRIL-N fluid and weight up only as needed for hole conditions. Take MWD surveys at least every 9m and on the fly as much as possible. Use 500-600 gpm as much as possible to keep the hole clean and plot torque and drag on the rig to assess any need for a wiper trip which will be done only based on hole conditions. Upon reaching total depth, circulate the hole clean with a highside toolface. Pull a wiper trip to 2000m MD. RIH and circulate the hole clean and condition the mud to run casing. Pump a 100-bbl hi-vis sweep and circulate the hole clean. Strap out of the hole and confirm with the onsite geologist the LWD logs are acceptable and the 5-1/2" slotted liner can be run. No confirmation survey is to be run at this point inside the drillpipe for azimuth or TVD verification. Extend the MD as needed, at a constant angle and azimuth, to allow for full LWD logging of the 500m 89°-hole section.

Note: Hydraulics considerations may mandate laying out some HWDP, etc. components drilling this phase. Continue drilling the well while LWD and penetrate the wellbore toe target at 3939m MD, 2841m TVD as close to the center as practical and within 1-2m TVD of the 89° section courseline as much as possible at all times. Monitor the position of this well relative to the Blackback-1 well while drilling ahead, with the Blackback-1 shown on the directional plots.

3. Run and set the 5-1/2" slotted liner from to place 500m of slots in the open hole. Well completion details will follow.

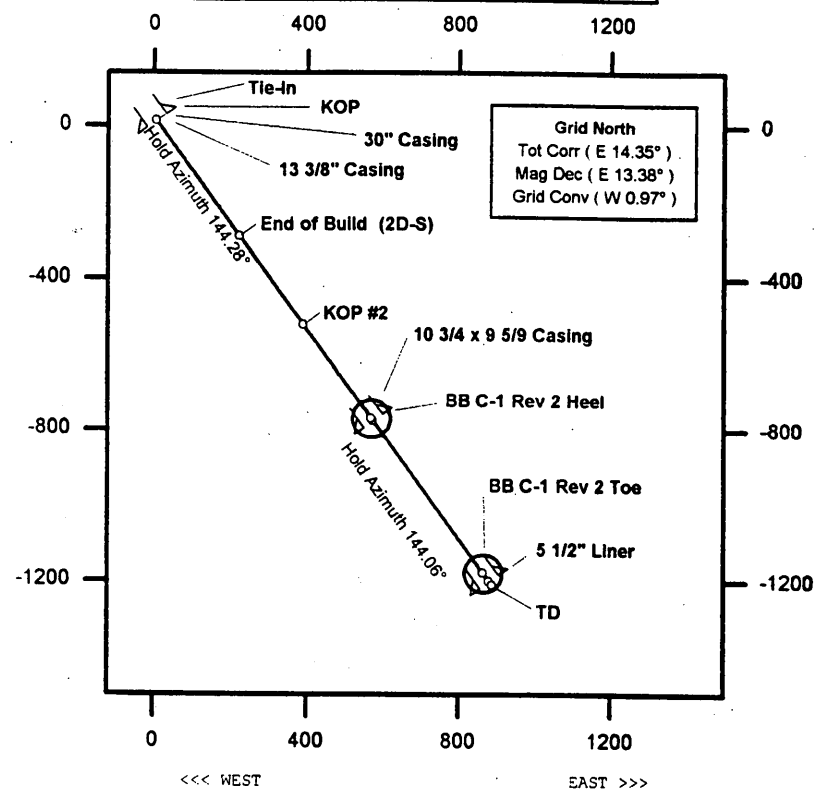


Esso Australia Ltd

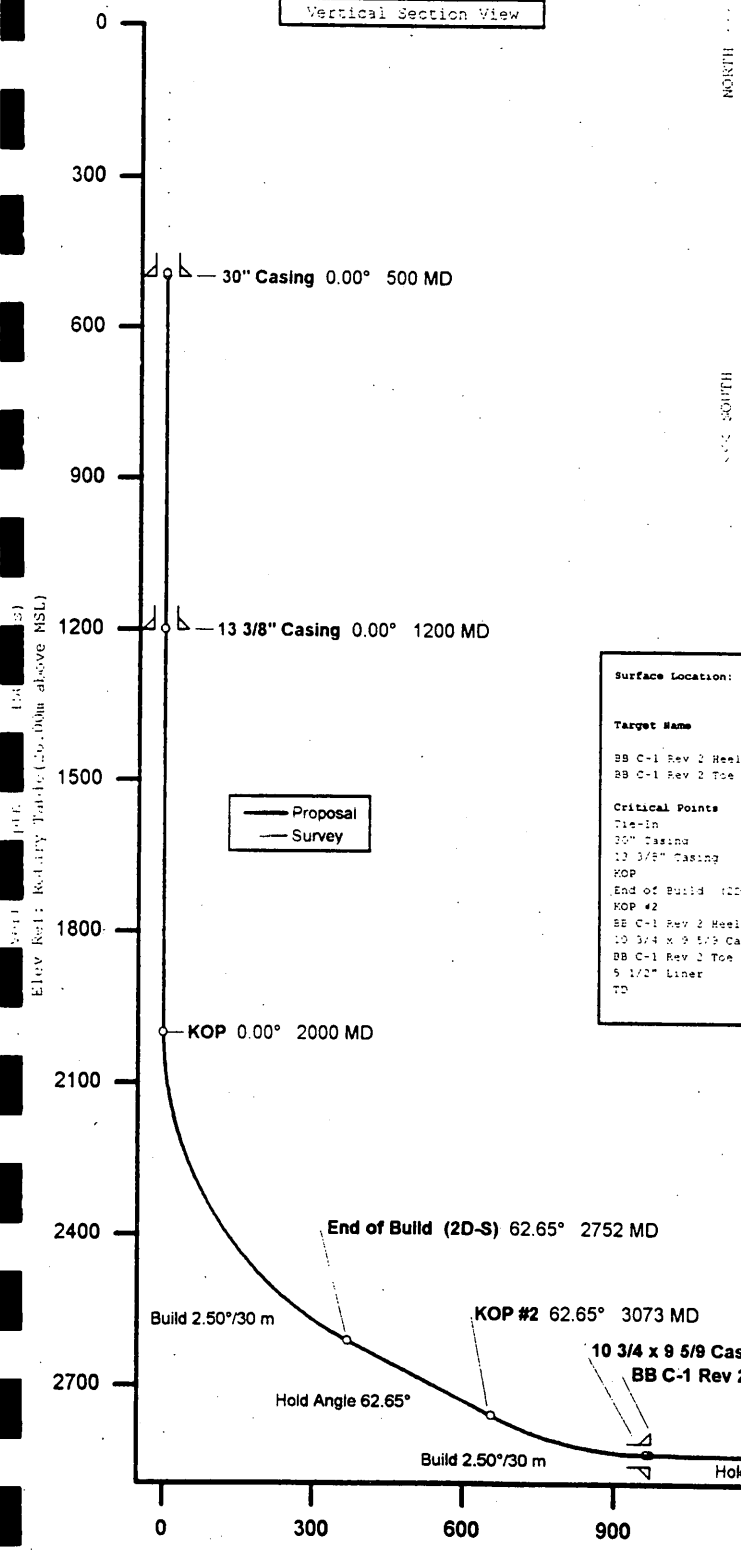


WELL Blackback C-1	FIELD Blackback Gippsland Offshore	STRUCTURE Blackback Sedco 702
Magnetic Parameters Model: BGS 1998 Dip: -69.043° Mag Dec: 13.379° Date: November 06, 1998 FS: 60300.8 nT	Surface Location Lat: S 38 32 29.112 Lon: E 148 33 10.902 North: 5732896.00 m East: 635353.00 m Grid Conv: -0.9678° Scale Fact: 0.9998	Miscellaneous Slot: Slot 3 Plan#: BB C-1 Rev 6 Elev Ref: Rotary Table (26.00m above MSL) Date Drawn: 10:45:52AM 27-Nov-1998

PLAN VIEW Scale (1 cm = 200 meters)



Vertical Section View



Surface Location: North: 5732896.00 m, East: 635353.00 m UTM Zone 55S, Meters

Target Name	Grid Coord		TVD	VSEC	Local Coord		Shape	Major Axis
	N(+)/S(-)	E(+)/W(-)			E(+)/W(-)	E(+)/W(-)		
BB C-1 Rev 2 Heel	5732113.00	635916.00	1835.00	864.56	-770.13	570.10	Circle	100.0
BB C-1 Rev 2 Toe	5731703.00	636212.00	1841.00	1470.34	-1190.21	866.15	Circle	100.0

Critical Points	MD	INCL	AZIM	TVD	VSEC	Local Coord		DLS
						N(+)/S(-)	E(+)/W(-)	
Tie-In	135.00	1.00	144.3	435.00	0.00	15.10	7.00	0.00
30" Casing	500.00	1.00	144.3	500.00	0.00	12.00	7.10	2.00
13 3/8" Casing	1200.00	1.00	144.3	1200.00	0.00	12.00	7.00	0.00
KOP	2000.00	1.00	144.3	2000.00	0.00	13.00	7.30	0.00
End of Build (2D)	2751.81	62.65	144.3	2610.70	271.68	-198.77	223.08	2.50
KOP #2	3072.86	62.65	144.3	2758.19	656.85	-520.30	390.46	0.00
BB C-1 Rev 2 Heel	3392.80	89.32	144.3	1835.00	864.56	-770.13	570.10	2.50
10 3/4 x 9 5/9 Ca	3400.00	89.32	144.3	2835.08	971.66	-775.90	574.24	0.01
BB C-1 Rev 2 Toe	3899.71	89.32	144.1	1841.00	1470.34	-1190.21	866.15	0.01
5 1/2" Liner	3926.00	89.32	144.1	2841.32	1497.62	-1202.59	892.17	0.00
TD	3939.71	89.32	144.1	2841.47	1510.33	-1210.59	889.63	0.00

From(m)	To(m)	Action
495	2000	Drill Tangent Hold on Inc 0.00° Hold on Az 144.28°
2000	2752	Build 2.50°/30m From 495 m TVD to 2000 m TVD From Inc 0.00° to 62.65° on Az 144.28°
2752	3073	Drill Tangent Hold on Inc 62.65° Hold on Az 144.28°
3073	3393	From 2611 m TVD to 2758 m TVD Curve 2.50°/30m From Inc 62.65° to 89.32° From Az 144.28° to 144.28°
3393	3899	From 2758 m TVD to 2835 m TVD Curve 0.01°/30m From Inc 89.32° to 89.32° From Az 144.28° to 144.06°
3899	3926	From 2835 m TVD to 2841 m TVD Drill Tangent to TD Hold on Inc 89.32° Hold on Az 144.06° From 2841 m TVD to 2841 m TVD

Quality Control
 Date Drawn: 27-Nov-1998
 Drawn by: _____
 Checked by: _____
 Client OK: _____

Vertical Section Departure at 144.24 deg from (13.0, 7.0). (1 cm = 150 meters)