



PORE PRESSURE EVALUATION LOG

WELL NAME : BLACKBACK A1-ST1

From (m): 3650 To (m): 4720 SCALE: 1/1000

GENERAL DATA
 Client : ESSO Australia Ltd
 Country : AUSTRALIA
 Block : Gippsland Offshore
 Basin : Bass Strait
 Well Type : Subsea Development
 Rig Name : SEDCO 702

LOCATION
 Latitude : 148°33'11.274"E
 Longitude : 39°32'31.677"S
 Northing (m): 5 732 873.4 mN
 Easting (m): 635 355.1 mE
 RT-Seabed (m): 428
 RT-ISLW (m): 26

CASING
 30" Conductor (m): 487.00 m
 20" Csg Shoe (m): 682.00 m
 13 3/8" Shoe (m): 1302.12 m
 9 5/8" Shoe (m):

FINAL WELL DATA
 Spud Date : 01-04-1999
 Reached TD on : 11-04-1999
 Total Depth (m): 4695.5 m
 TVD (m): 2921 m
 Final Status : Oil Producer

ABBREVIATIONS

MW MUD DENSITY
 FV FUNNEL VISCOSITY
 PV PLASTIC VISCOSITY
 YS YIELD POINT
 CK FILTER CAKE
 SOL SOLIDS
 WL FILTRATE
 SD SAND - %
 CL CHLORIDES - mg/l
 RM MUD RESISTIVITY
 RMF MUD FILTRATE
 C CARBIDE TEST
 LAT LOGGED AFTER TRIP
 DS DEVIATION SURVEY

NB NEW BIT
 RR RERUN BIT
 CB CORE BIT
 WOB WEIGHT ON BIT
 RPM REV/S PER MINUTE
 FC FLOW CHECK
 CR CIRCULATE RETURNS
 PR POOR RETURNS
 NR NO RETURNS
 BG BACKGROUND GAS
 TG TRIP GAS
 STG WIPER TRIP GAS
 CG CONNECTION GAS
 SG SWAB GAS
 SVG SURVEY GAS

LITHOLOGY LEGEND

SST: crse
 SST: med
 SST: f-vf
 ar. Silt ar
 Claystone
 si. Limestone

ar. Limestone a
 ca. Shale
 ar. Sandstone a
 Limestone
 CEMENT
 Coal

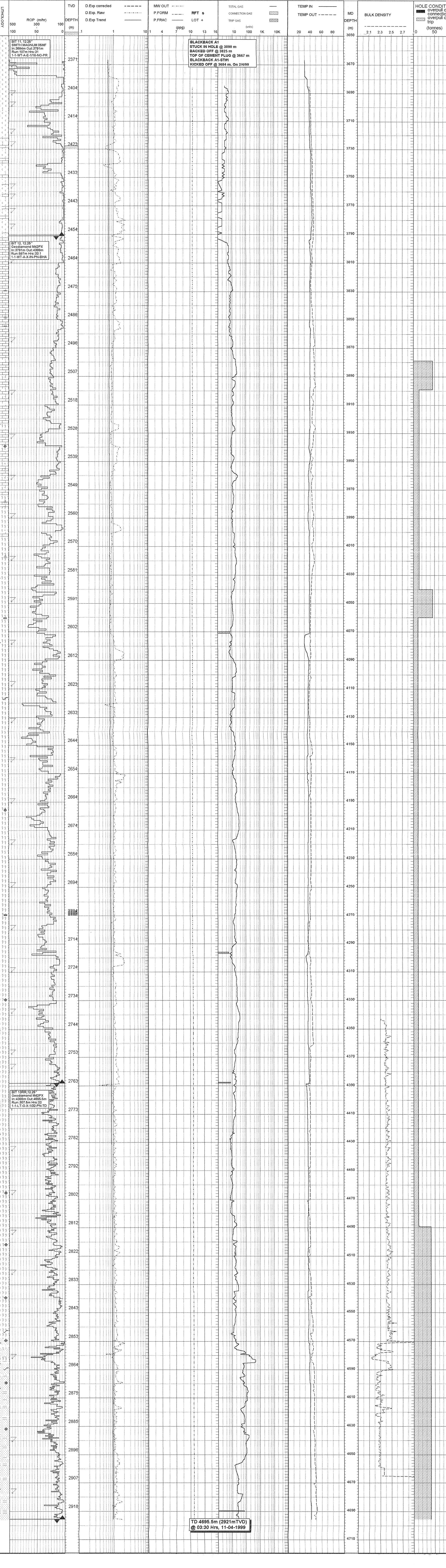
Clay, Shale
 Siderite
 Glauconite
 Pyrite
 Sulfures dissou
 Halite

ENGINEERING LEGEND

Core
 Mud Loss
 Sidewall Corf
 Shoe
 COAL
 Liner Hanger
 Wireline Logs
 Sample

SWC Unrec
 Dev Survey
 Pressure Only

Trend slopes : a = 0.000076 b = -0.2998094 S&K Coefficients : LOCAL aS : 0.01447 aK : 0.35400 CORRECTIONS : Mud Weight Correction
 Comput. method : EATON Hydro. gradient : 1.03 kg/l bS : -0.18350 bK : -3.60700 Galle&Woods - Bit Wear Interpolated Footage Drilled



DEPT. MTL. RES. & ENV. PEG14236

Generated by ALX Package