

Schlumberger  
SYDNEY LOG  
INTERPRETATION  
CENTRE

# GEOGRAM\*

(Synthetic Seismogram)

\* A Mark of Schlumberger

Company: ESSO AUSTRALIA LTD.  
Well: BLACKBACK 1 (ST-1/ST-2)  
Field: WILDCAT  
Country: AUSTRALIA  
Reference No: 56460  
Date Logged: 16/9/89  
Location: 98 33 37 S 147 39 42 68 E  
Elevations: KB: 2100 DF: 2070 GL: -41800  
Permanent Datum: MSI  
Depth Units: METRES

### LOG INFORMATION

FIELD RECORDING: Engineer: G. SMITH Location: Program Version: 32.2  
COMPUTATION: Analyst: Z. KATELIS Centre: SVJ Baseline: 16900X3  
ELEVATION ABOVE MEAN SEA LEVEL  
Logging Datum: 2100  
Seismic Reference Datum: 0.00  
Sonic Calibration By Check Shot: YES Sonic Edited By Analyst: YES

Two-Way Time Sample Interval: 2 ms Environment:

True Vertical Depth Corrections Applied: YES  
Source of True Vertical Depth Data: DPMETER  
Maximum Hole Deviation: 39 DEG

Run	Date	Tool Type	Bit Size/ Depth	Casing Size/ Depth	Top Depth	Bottom Depth
USP		Gun Other	Hydro Emission	Gun Emission	Hydro Emission	Gun Emission
		Gun Other	Hydro Emission	Gun Emission	Hydro Emission	Gun Emission

### GEOGRAM MODEL ASSUMPTIONS

Equal time slice model of horizontal plane layers.  
Plane acoustic waves at normal incidence.  
No intrinsic attenuation.  
POLARITY  
An upgoing wave, reflected by an increase in acoustic impedance with depth, is displayed as a white trough under normal polarity.

SIGNATURES  
All signatures displayed in the Geogram results correspond to a wavelet convolved with a refraction coefficient of -0.5 (A decrease in acoustic impedance with depth).

### REMARKS

PART A  
.35 HERTZ ZERO PHASE

FOLD HERE

The well name, location and borehole reference data were furnished by the customer.

All interpretations are opinions based on inferences from electrical or other measurements and we cannot, and do not guarantee the accuracy or correctness of any interpretations, and we shall not, except in the case of gross or willful negligence on our part, be liable or responsible for any loss, costs, damages or expenses incurred or sustained by anyone resulting from any interpretations made by any of our officers, agents or employees. These interpretations are also subject to Clause 4 of our General Terms and Conditions as set out in our current Price Schedule.

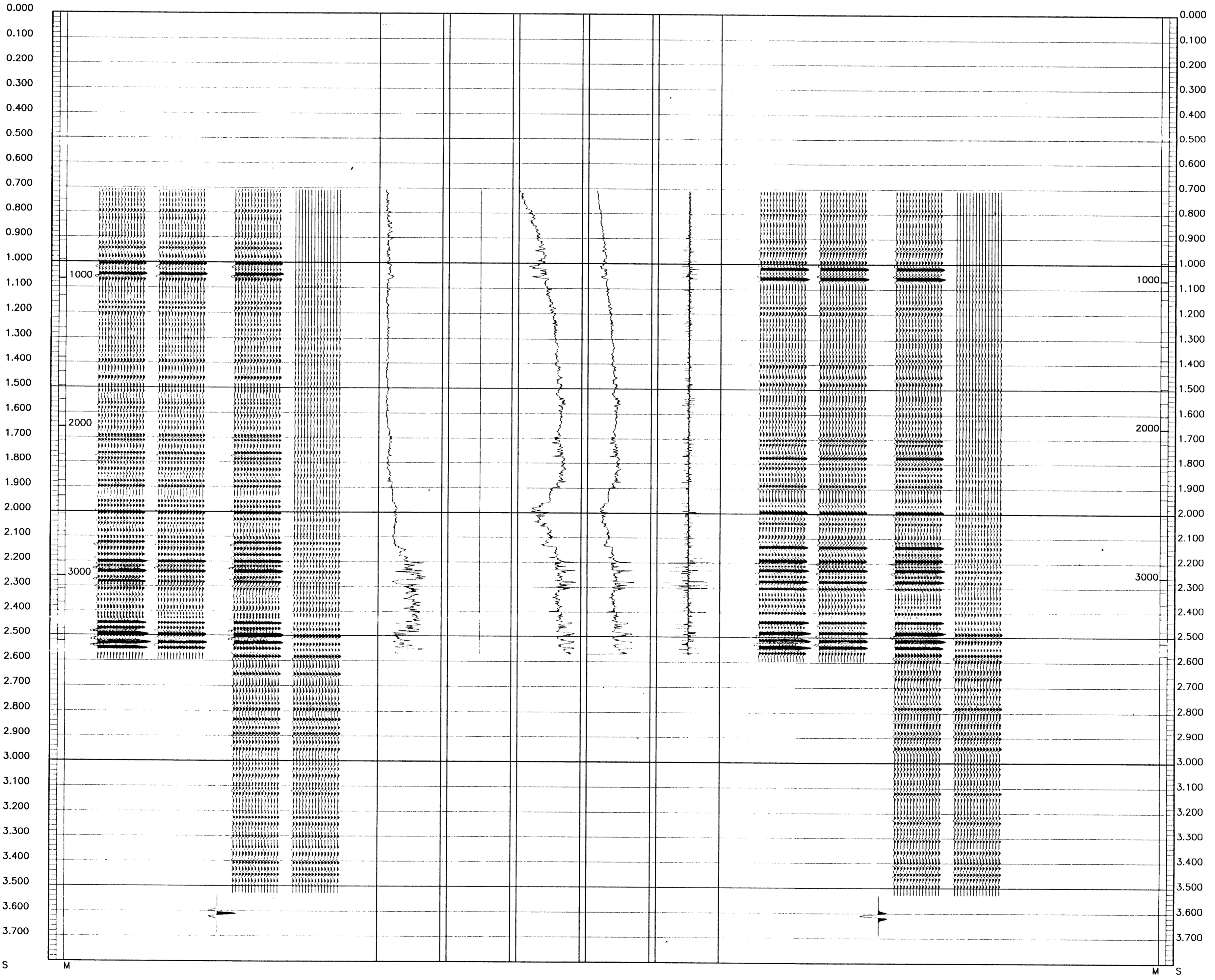
CLIENT = ESSO AUSTRALIA LTD.  
FIELD = WILDCAT  
WELL = BLACKBACK 1 (ST-1/ST-2)

**\*\* GEOGRAM \*\***

**35 HERTZ ZERO PHASE  
RICKER WAVELET**

**BLACKBACK 1**

PRIMARIES AND MULTIPLES REVERSE POLARITY
PRIMARIES WITH TRANSMISSION LOSS REVERSE POLARITY
PRIMARIES REVERSE POLARITY
REFLECTION
ACOUSTIC IMPEDANCE
SONIC
DENSITY
GAMMA RAY
MULTIPLES ONLY NORMAL POLARITY
PRIMARIES AND MULTIPLES NORMAL POLARITY
PRIMARIES WITH TRANSMISSION LOSS NORMAL POLARITY
PRIMARIES NORMAL POLARITY



COMPANY ESSO AUSTRALIA LTD.  
FIELD WILDCAT  
WELL BLACKBACK 1 (ST-1/ST-2)  
COUNTRY AUSTRALIA

