

Schlumberger
SYDNEY LOG
INTERPRETATION
CENTRE

GEOGRAM*

(Synthetic Seismogram)

Company: ESSO AUSTRALIA LTD.
Well: BLACKBACK 1 (ST-1/ST-2)
Field: WILDCAT
Country: AUSTRALIA
Reference No: 65480
Date Logged: 18/8/89
Location: 38 33'33" S 147 39'42.88" E
Elevations: KB: 2100 DF: 2070 GL: -41800
Permanent Datum: MSL
Depth Units: METRES

LOG INFORMATION

FIELD RECORDING: Engineer: G. SMITH Location: Program Version: 322
COMPARISON: Analyst: ZKATELS Centre: SYL Baseline: 1800013
Logging Datum: ELEVATION ABOVE MEAN SEA LEVEL
2100
Sonic Reference Datum: 0.00
Sonic Calibration By Check Shots: YES Sonic Edited By Analyst: YES
Two-Way Time Sample Interval: 2 ms Environment:

True Vertical Depth Corrections Applied: YES
Source of True Vertical Depth Data: DIPMETER
Maximum Hole Deviation: 39 DEG

Run	Date	Tool Type	Bit Size/ Depth	Casing Size/ Depth	Top Depth	Bottom Depth
VSP		Gun	Hydro	Gun	Hydro	Gun
Run	Date	Offset	Offset	Elevation	Elevation	Asimuth

GEOGRAM MODEL ASSUMPTIONS
Equal time slice model of horizontal plane layers.
Plane acoustic waves at normal incidence.
No intrinsic attenuation.
POLARITY
An upgoing wave, reflected by an increase in acoustic impedance with depth, is displayed as a white trough under normal polarity.
SIGNALURES
All signatures displayed in the Geogram results correspond to a wavelet convolved with a reflection coefficient of -0.5 (a decrease in acoustic impedance with depth).

PART B
45 HZ ZERO PHASE
REMARKS

The well name, location and borehole reference data were furnished by the customer.

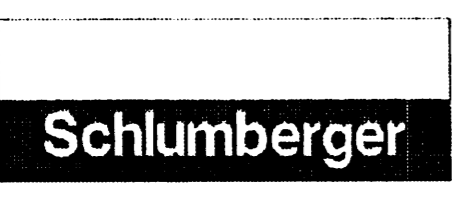
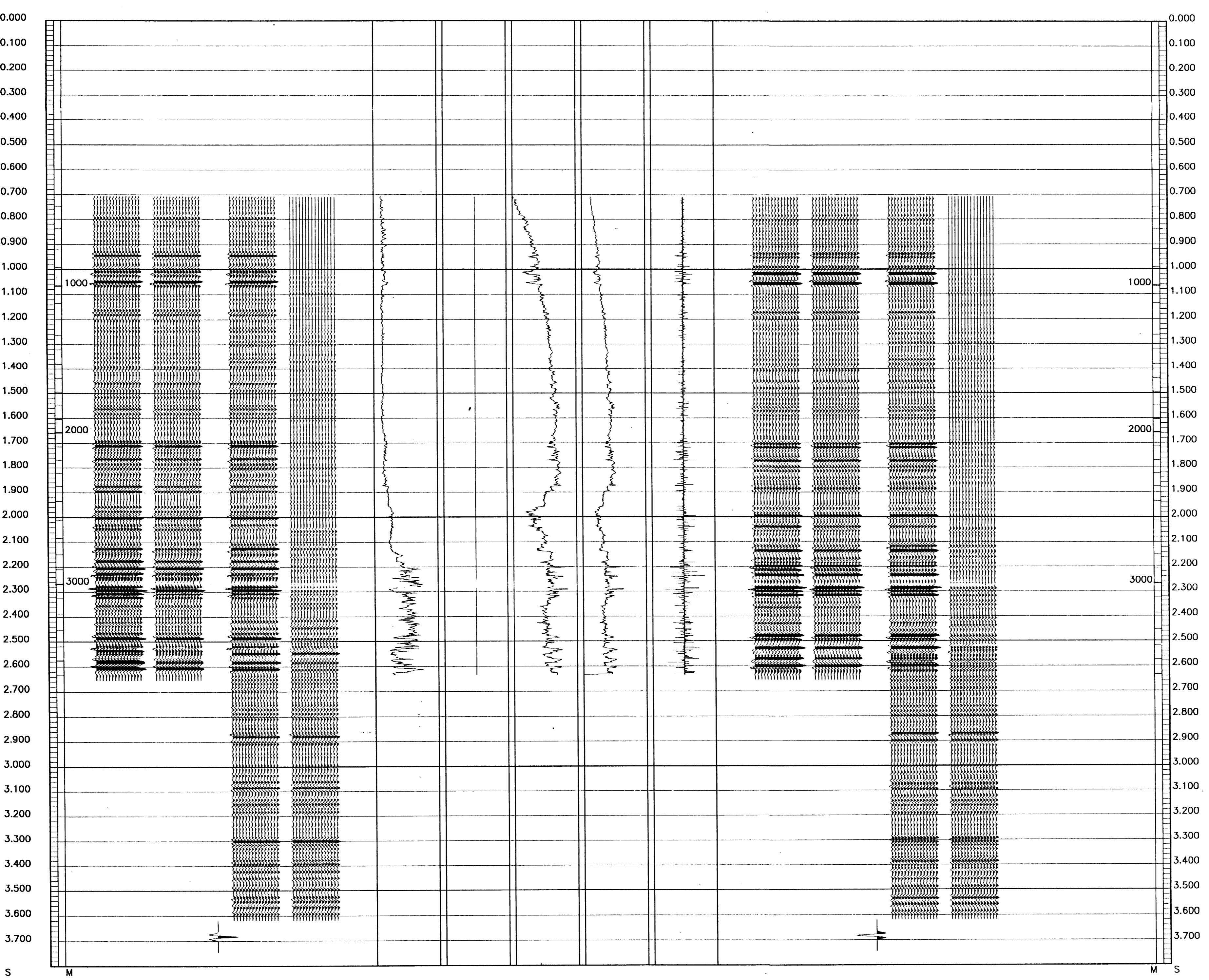
All interpretations are opinions based on inferences from electrical or other measurements and we cannot, and do not guarantee the accuracy or correctness of any interpretations, and we shall not, except in the case of gross or willful negligence on our part, be liable or responsible for any loss, costs, damages or expenses incurred or sustained by anyone resulting from any interpretations made by any of our officers, agents or employees. These interpretations are also subject to Clause 4 of our General Terms and Conditions as set out in our current Price Schedule.

CLIENT = ESSO AUSTRALIA LTD.
FIELD = WILDCAT
WELL = BLACKBACK 1 (ST-1/ST-2)

**** GEOGRAM ****

45 HERTZ ZERO PHASE
RICKER WAVELET
BLACKBACK 1

PRIMARYS AND MULTIPLES REVERSE POLARITY
PRIMARYS WITH TRANSMISSION LOSS REVERSE POLARITY
PRIMARYS REVERSE POLARITY
REFLECTION
ACOUSTIC IMPEDANCE
SONIC
DENSITY
GAMMA RAY
MULTIPLES ONLY NORMAL POLARITY
PRIMARYS AND MULTIPLES NORMAL POLARITY
PRIMARYS WITH TRANSMISSION LOSS NORMAL POLARITY
PRIMARYS NORMAL POLARITY



COMPANY ESSO AUSTRALIA LTD.
FIELD WILDCAT
WELL BLACKBACK 1 (ST-1/ST-2)
COUNTRY AUSTRALIA