



Schlumberger

Company: **OMV Australia Pty Ltd**

Well: **Baleen-4**

Field: **OMV-Baleen**

State: **Victoria**

Country: **Australia**

Back-off & CCL

Scale 1:200

State: Victoria
 Field: OMV-Baleen
 Location: ADG84 / AMG84 Zone 55
 Well: Baleen-4
 Company: OMV Australia Pty Ltd

LOCATION	
ADG84 / AMG84 Zone 55	Elev.: K.B. 29 m
Northings: 5 792 541.30 m	G.L. -53.1 m
Eastings: 626 675.90 m	D.F. 29 m
Permanent Datum: _____	Mean Sea Level _____
Log Measured From: _____	Drill Floor _____
Drilling Measured From: _____	Drill Floor _____
Rig: _____	Max. Well Deviation _____
Ocean Bouny _____	10 deg _____

Longitude	Latitude
148 26' 34.417" E	38 00' 20.986" S

Logging Date	1-Oct-2004
Run Number	1 & 2
Depth Driller	324 m
Schlumberger Depth	
Bottom Log Interval	319.6 m
Top Log Interval	275.9 m
Casing Fluid Type	Oil-Based Mud
Salinity	
Density	9.3 g/cm3
Fluid Level	0 m
BIT/CASING/TUBING STRING	
Bit Size	16,000 in
From	116 m
To	324 m
Casing/Tubing Size	13.375 in
Weight	68 lbm/ft
Grade	K-55
From	85 m
To	331 m
Maximum Recorded Temperatures	
Logger On Bottom	1-Oct-2004
Unit Number	25
Recorded By	G.Ruthven / T.Awobadejo
Witnessed By	C.Roots / H.Heinze

PVT DATA		Run 1	Run 2	Run 3
Oil Density				
Water Salinity				
Gas Gravity				
Bo				
Bw				
1/Bq				
Bubble Point Pressure				
Bubble Point Temperature				
Solution GOR				
Maximum Deviation	10 deg			
CEMENTING DATA				
Primary/Squeeze	Primary			
Casing String No				
Lead Cement Type				
Volume				
Density				
Water Loss				
Additives				
Tail Cement Type				
Volume				
Density				
Water Loss				
Additives				
Expected Cement Top				
Logging Date				
Run Number				
Depth Driller				
Schlumberger Depth				
Bottom Log Interval				
Top Log Interval				
Casing Fluid Type				
Salinity				
Density				
Fluid Level				
BIT/CASING/TUBING STRING				
Bit Size				
From				
To				
Casing/Tubing Size				
Weight				
Grade				
From				
To				
Maximum Recorded Temperatures				
Logger On Bottom				
Unit Number				
Recorded By				
Witnessed By				

DISCLAIMER

THE USE OF AND RELIANCE UPON THIS RECORDED-DATA BY THE HEREIN NAMED COMPANY (AND ANY OF ITS AFFILIATES, PARTNERS, REPRESENTATIVES, AGENTS, CONSULTANTS AND EMPLOYEES) IS SUBJECT TO THE TERMS AND CONDITIONS AGREED UPON BETWEEN SCHLUMBERGER AND THE COMPANY, INCLUDING: (a) RESTRICTIONS ON USE OF THE RECORDED-DATA; (b) DISCLAIMERS AND WAIVERS OF WARRANTIES AND REPRESENTATIONS REGARDING COMPANY'S USE OF AND RELIANCE UPON THE RECORDED-DATA; AND (c) CUSTOMER'S FULL AND SOLE RESPONSIBILITY FOR ANY INFERENCE DRAWN OR DECISION MADE IN CONNECTION WITH THE USE OF THIS RECORDED-DATA.

OTHER SERVICES1

- OS1:
- OS2:
- OS3:
- OS4:
- OS5:



REMARKS: RUN NUMBER 1

Log compared to drill pipe & BHA configuration diagram provided by company man, but no depth correction applied..
 Note that rig was 3.96m above drilling draft during these runs.
 A drift run was performed first with a 1-11/16" tool string to ensure that back-off charge would pass.
 Wireline tag depth was 319.6m MD.
 A 3-strand back-off charge was then fired at 275.9m MD to back-off the pipe.
 Distance from CCL to centre of charge was 5.20m. CCL located at 270.7m MD to fire charge.
 The bit, three drill collars, three stabilisers and 1 joint of 5" HWDP were left in the hole.

Crew:
 Paul Flood, Peter Lawrence, Rob Duncan, Tim Osler

RUN 1			RUN 2		
SERVICE ORDER #:			SERVICE ORDER #:		
PROGRAM VERSION:			PROGRAM VERSION:		
FLUID LEVEL:			FLUID LEVEL:		
LOGGED INTERVAL	START	STOP	LOGGED INTERVAL	START	STOP
		11C0-305 0 m			

EQUIPMENT DESCRIPTION

RUN 1	RUN 2
SURFACE EQUIPMENT	
WITM (SHM)	
DOWNHOLE EQUIPMENT	
MH-22 MH-22	6.94
	
CCL-L CCL-L	6.46
	
CCL Secure Se Tension TOOL ZERO	

EQF-43
EQF-43

6.01

EQF-43
EQF-43

4.18

SHM_GUN
GUN

2.35

TOOL BOTTOM

MAXIMUM STRING DIAMETER 1.69 IN
MEASUREMENTS RELATIVE TO TOOL ZERO
ALL LENGTHS IN METERS

Client: OMV Australia Pty Ltd
Well: Baleen-4
Field: OMV - Baleen
State: Victoria
Country: Australia

Rig Name: Ocean Bounty
Reference Datum: Mean Sea Level
Elevation: 29.0 m

Drawing Date: 10/3/2004
API #:

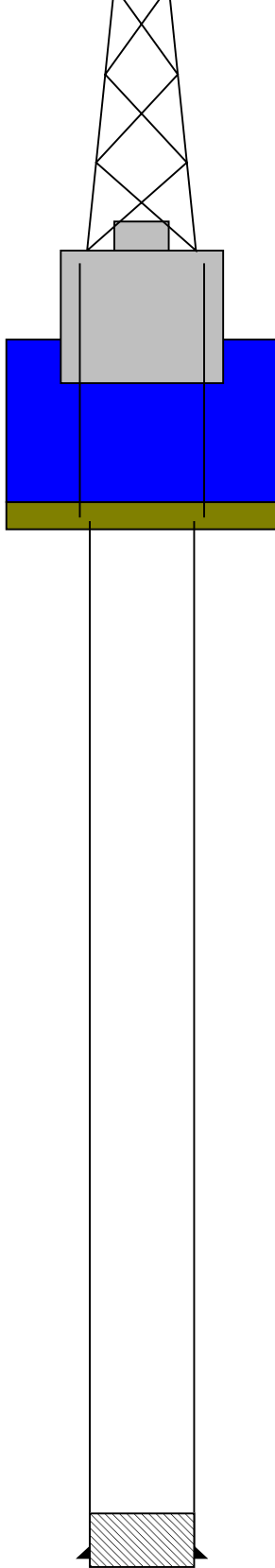
Production String	(in)	(m)	Well Schematic	(m)	(in)	Casing String
	OD	ID		MD	MD	

Kelly Bushing Elevation
Derrick Floor Elevation

0.0
0.0

Mean Sea Level

29.0



0.0 20.000

Casing String

85.0 20.000
85.0 13.375

Casing Shoe
Casing String

324.0
331.0 13.375

PBTD
Casing Shoe

Schlumberger

Operational Summary Listing

MAXIS Field Log

PERFO2 Operational Summary Listing

Device Status Req Depth (M) Obs Depth (M) Time Used

GUN1 Used 275.9 275.9 Fri Oct 01 23:37:41 2004

Schlumberger

Backoff Pass

Company: OMV Australia Pty Ltd

Well: Baleen-4

Output DLIS Files

DEFAULT PERFO_012LUP FN:11 PRODUCER 01-Oct-2004 23:31 299.0 M 254.4 M

OP System Version: 11C0-305

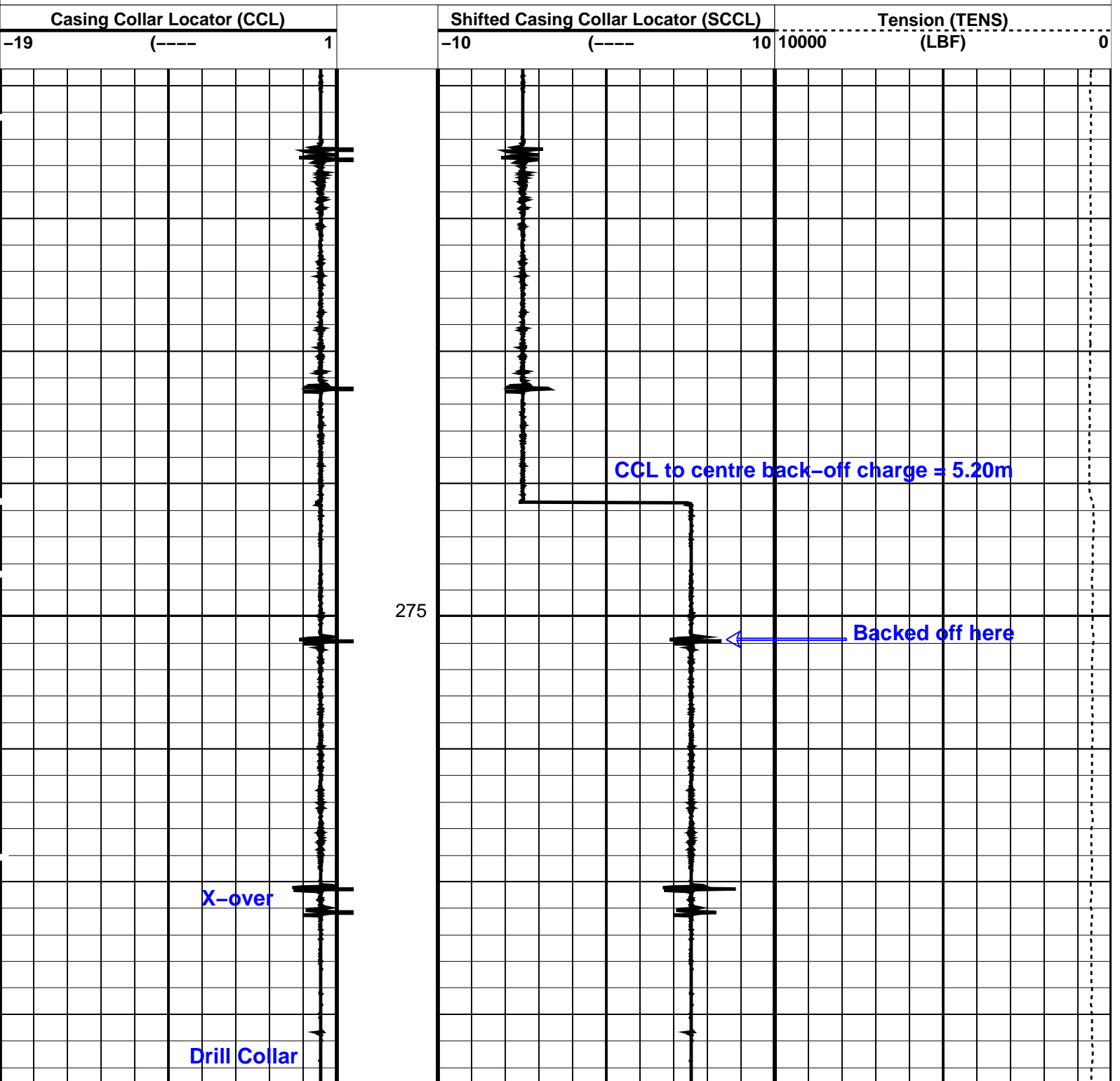
MCM

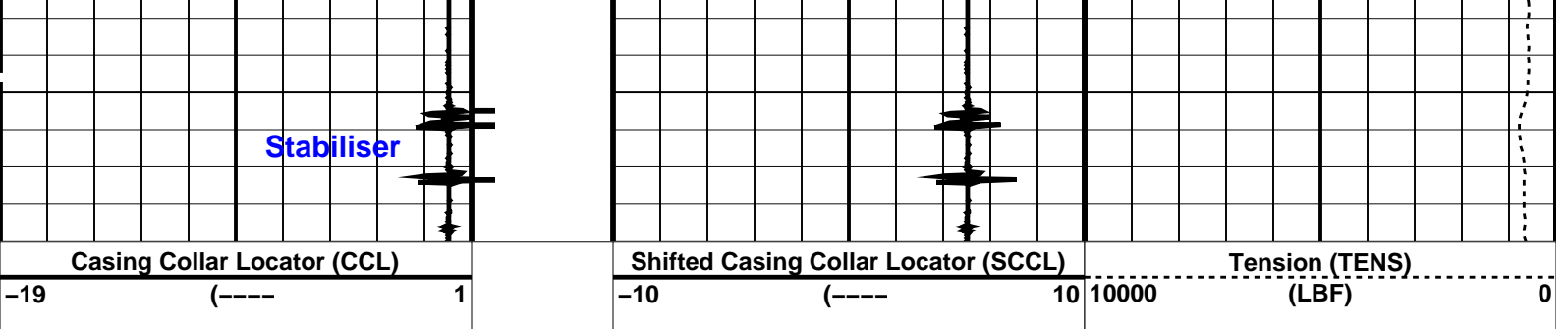
SHM_GUN OP11-KP1 CCL-L 11C0-305

PIP SUMMARY

└ Casing Collars

Time Mark Every 60 S





PIP SUMMARY

← Casing Collars

Time Mark Every 60 S

Parameters

DLIS Name	Description	Value
CCL-L: Casing Collar Locator		
CCLD	CCL reset delay	12 IN
CCLT	CCL Detection Level	0.3 V

Format: PERFO Vertical Scale: 1:200 Graphics File Created: 01-Oct-2004 23:31

OP System Version: 11C0-305
MCM

SHM_GUN OP11-KP1 CCL-L 11C0-305

Output DLIS Files

DEFAULT PERFO_012LUP FN:11 PRODUCER 01-Oct-2004 23:31



Drift Run - CCL Log

MAXIS Field Log

Company: Well:

Output DLIS Files

DEFAULT CCL_006LUP FN:5 PRODUCER 01-Oct-2004 20:27 319.6 M 11.6 M

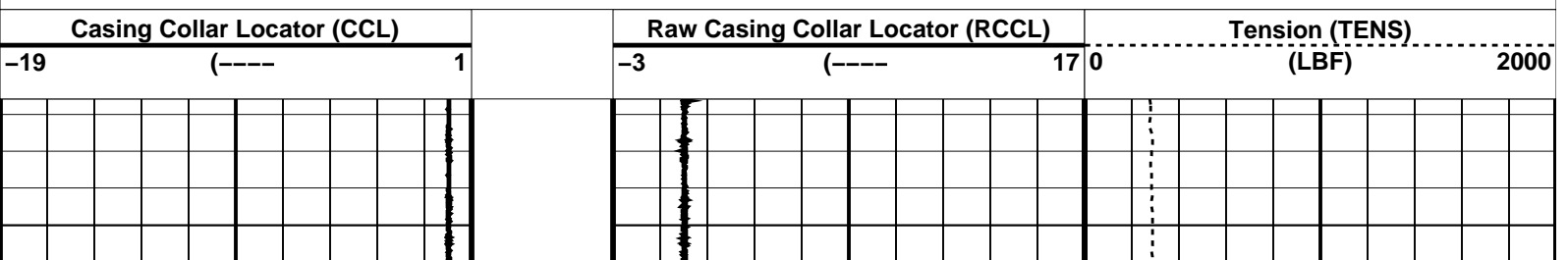
OP System Version: 11C0-305
MCM

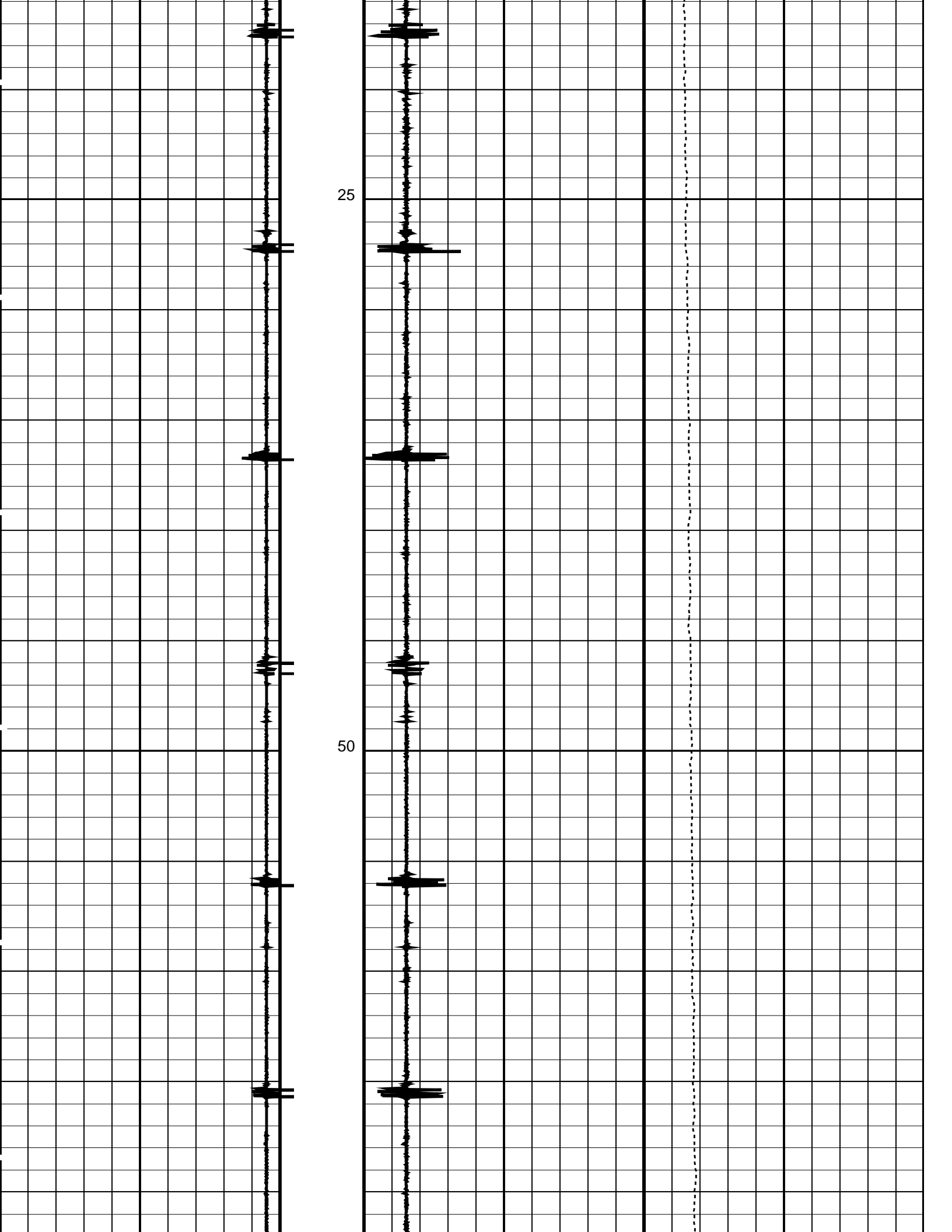
CCL-L 11C0-305

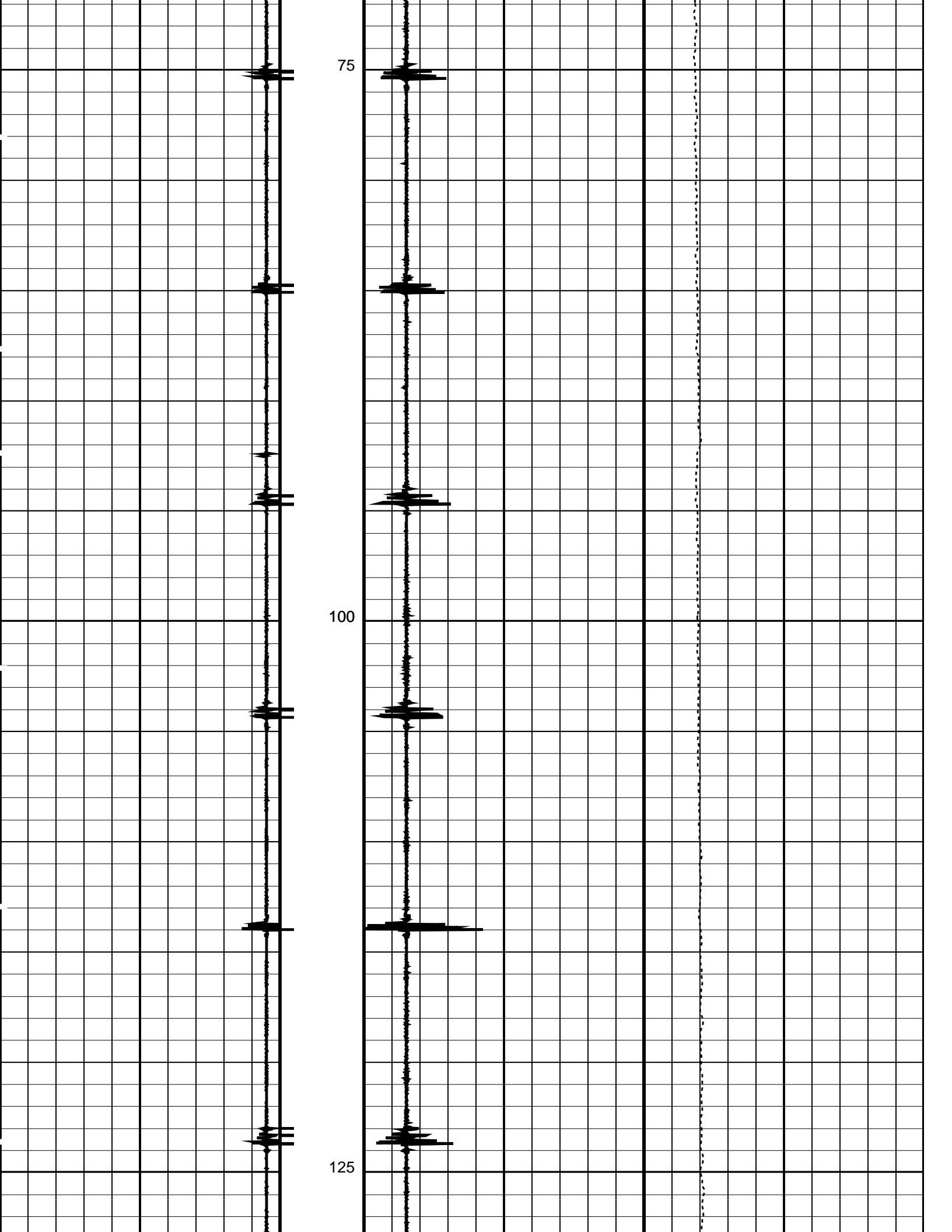
PIP SUMMARY

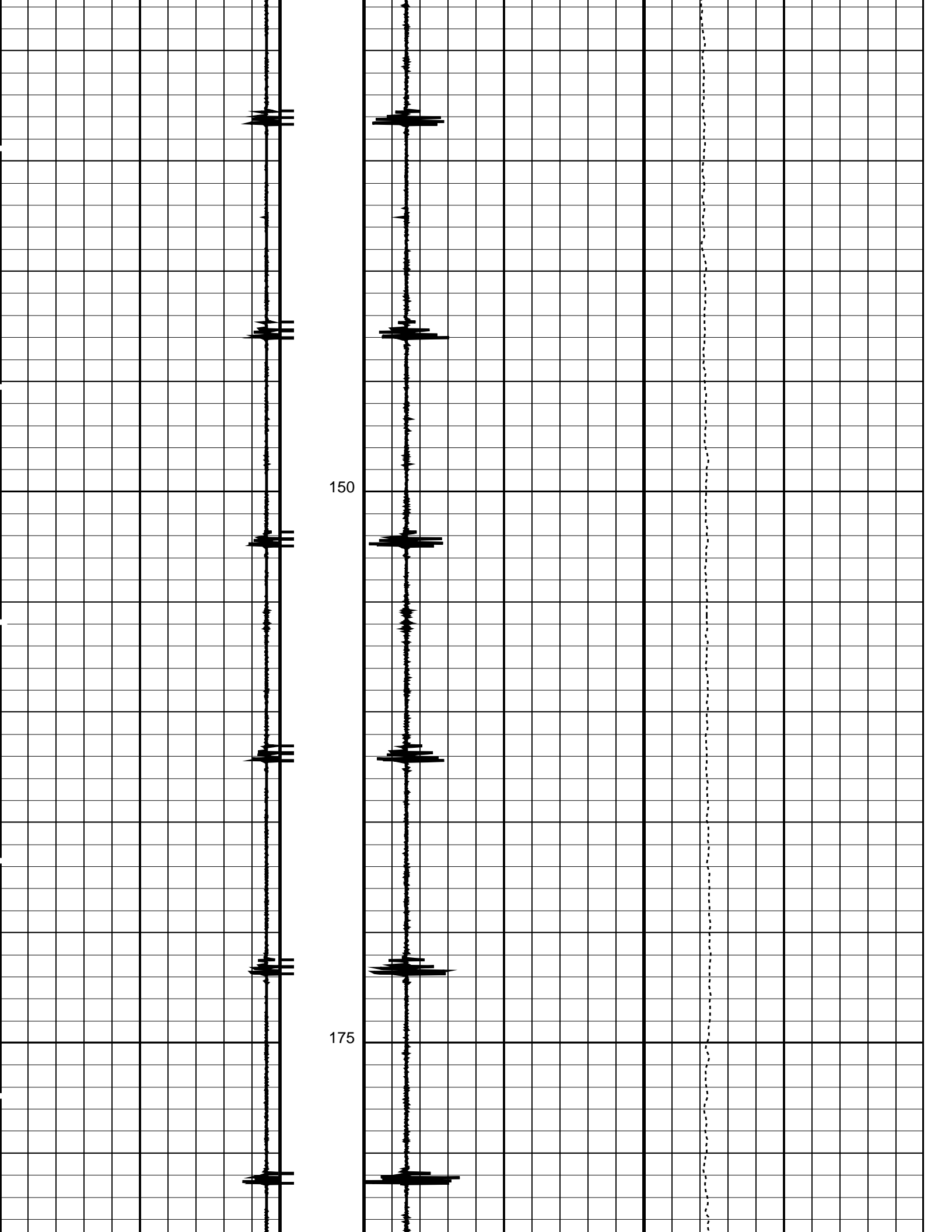
← Casing Collars

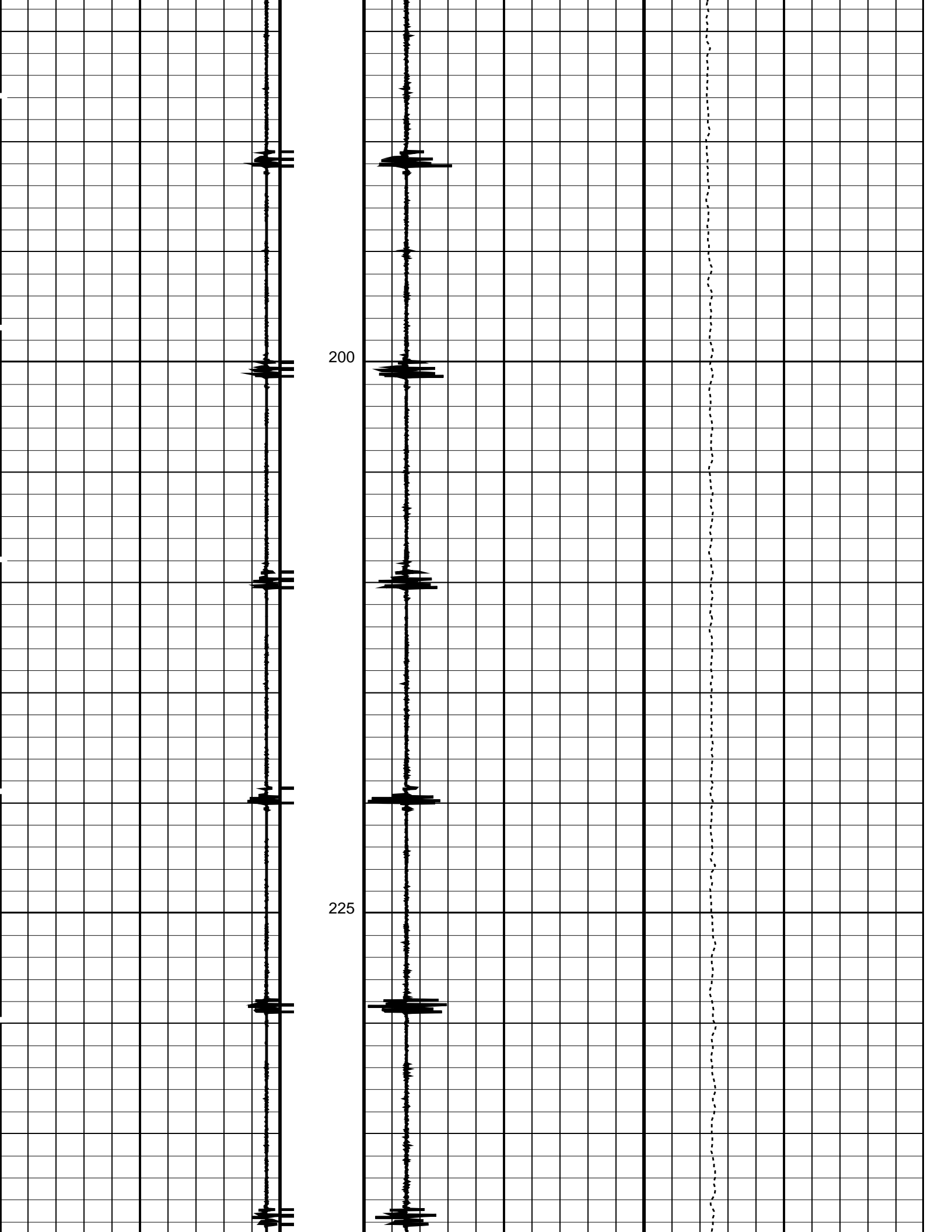
Time Mark Every 60 S

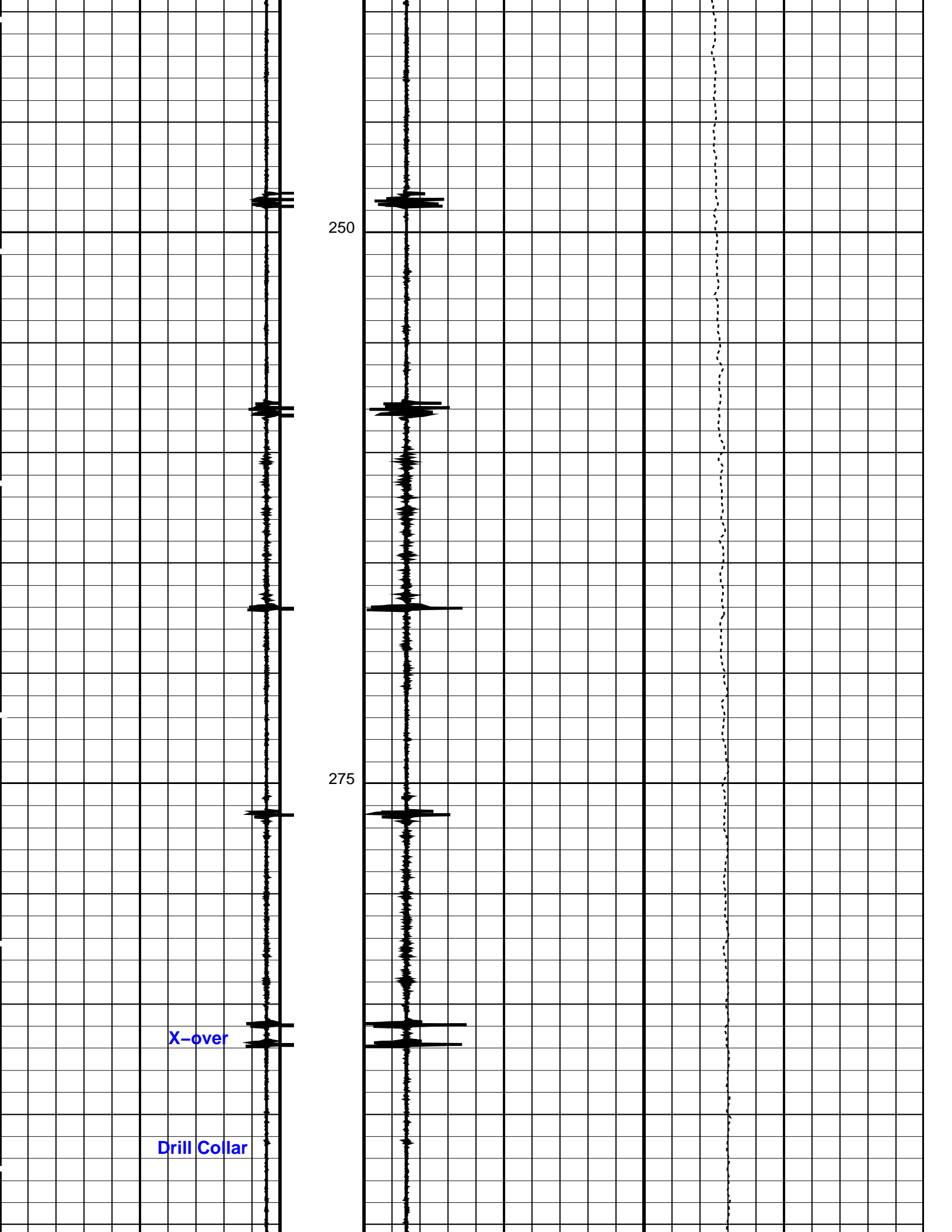


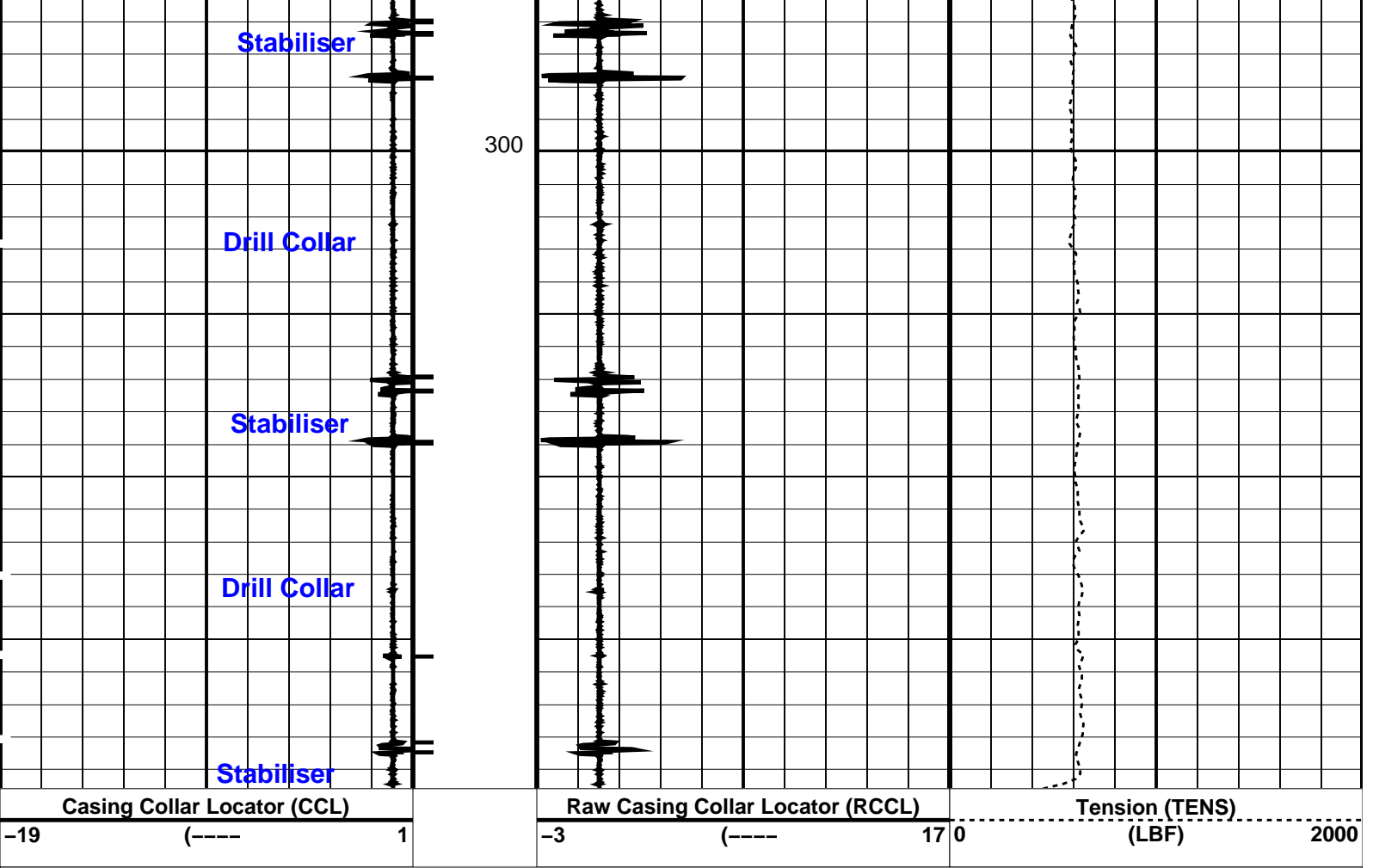












PIP SUMMARY

└ Casing Collars

Time Mark Every 60 S

Parameters

DLIS Name	Description	Value
CCLD	CCL-L: Casing Collar Locator	
CCLT	CCL reset delay	12 IN
	CCL Detection Level	0.3 V

Format: CCLLog

Vertical Scale: 1:200

Graphics File Created: 01-Oct-2004 20:27

OP System Version: 11C0-305
MCM

CCL-L 11C0-305

Output DLIS Files

DEFAULT CCL_006LUP FN:5 PRODUCER 01-Oct-2004 20:27

Company: OMV Australia Pty Ltd

Schlumberger

Well: Baleen-4
Field: OMV-Baleen
State: Victoria
Country: Australia

Back-off & CCL

Scale 1:200

