

Company: OMV Australia Pty Ltd

Well: Baleen-4

Field: OMV-Baleen

State: Victoria

Country: Australia

Back-off

Scale 1:200

LOCATION		ADG84 / AMG84 Zone 55 Northings: 5 792 541.30 m Eastings: 626 675.90 m	Elev.: K.B. 25 m G.L. -53.1 m D.F. 25 m
Permanent Datum: _____ Mean Sea Level _____ Log Measured From: _____ Drill Floor _____	Elev.: 0 m _____ 25.0 m above Perm. Datum		
Drilling Measured From: _____ Drill Floor _____			
Rig: _____ Ocean Bouny _____	Max. Well Deviation 10 deg	Longitude 148 26' 34.417" E	Latitude 38 00' 20.986" S

State: Victoria
 Field: OMV-Baleen
 Location: ADG84 / AMG84 Zone 55
 Well: Baleen-4
 Company: OMV Australia Pty Ltd

Logging Date	7-Oct-2004
Run Number	7
Depth Driller	320 m
Schlumberger Depth	
Bottom Log Interval	300.9 m
Top Log Interval	300.9 m
Casing Fluid Type	Oil-Based Mud
Salinity	
Density	9.3 g/cm3
Fluid Level	0 m
BIT/CASING/TUBING STRING	
Bit Size	16.000 in
From	112 m
To	320 m
Casing/Tubing Size	13.375 in
Weight	68 lbm/ft
Grade	K-55
From	81 m
To	327 m
Maximum Recorded Temperatures	
Logger On Bottom	7-Oct-2004
Unit Number	25
Recorded By	G.Ruthven / T.Awobadejo
Witnessed By	G.Howard / H.Heinzle

Oil Density	Run 1	Run 2	Run
Water Salinity			
Gas Gravity			
Bo			
Bw			
1/Bq			
Bubble Point Pressure			
Bubble Point Temperature			
Solution GOR			
Maximum Deviation	10 deg		
CEMENTING DATA			
Primary/Squeeze	Primary		
Casing String No			
Lead Cement Type			
Volume			
Density			
Water Loss			
Addives			
Tail Cement Type			
Volume			
Density			
Water Loss			
Additives			
Expected Cement Top			

Logging Date	7-Oct-2004
Run Number	7
Depth Driller	320 m
Schlumberger Depth	
Bottom Log Interval	300.9 m
Top Log Interval	300.9 m
Casing Fluid Type	Oil-Based Mud
Salinity	
Density	9.3 g/cm3
Fluid Level	0 m
BIT/CASING/TUBING STRING	
Bit Size	16.000 in
From	112 m
To	320 m
Casing/Tubing Size	13.375 in
Weight	68 lbm/ft
Grade	K-55
From	81 m
To	327 m
Maximum Recorded Temperatures	
Logger On Bottom	7-Oct-2004
Unit Number	25
Recorded By	G.Ruthven / T.Awobadejo
Witnessed By	G.Howard / H.Heinzle

DISCLAIMER
 THE USE OF AND RELIANCE UPON THIS RECORDED-DATA BY THE HEREIN NAMED COMPANY (AND ANY OF ITS AFFILIATES, PARTNERS, REPRESENTATIVES, AGENTS, CONSULTANTS AND EMPLOYEES) IS SUBJECT TO THE TERMS AND CONDITIONS AGREED UPON BETWEEN SCHLUMBERGER AND THE COMPANY, INCLUDING: (a) RESTRICTIONS ON USE OF THE RECORDED-DATA; (b) DISCLAIMERS AND WAIVERS OF WARRANTIES AND REPRESENTATIONS REGARDING COMPANY'S USE OF AND RELIANCE UPON THE RECORDED-DATA; AND (c) CUSTOMER'S FULL AND SOLE RESPONSIBILITY FOR ANY INFERENCE DRAWN OR DECISION MADE IN CONNECTION WITH THE USE OF THIS RECORDED-DATA.

OTHER SERVICES1
 OS1:
 OS2:
 OS3:
 OS4:
 OS5:


REMARKS: RUN NUMBER 1

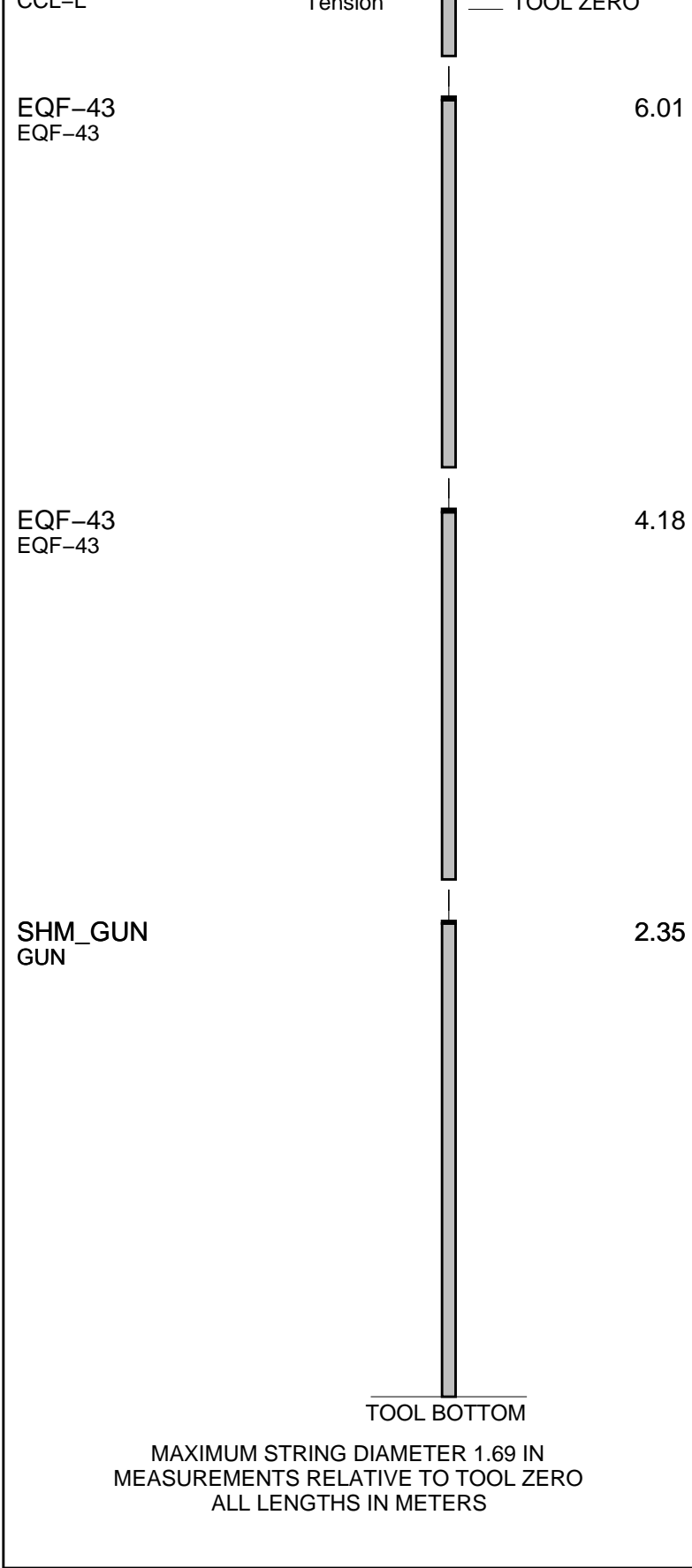
Log compared to drill pipe & BHA configuration diagram provided by company man, but no depth correction applied.
 A 6-strand back-off charge was fired at 300.9m MD to back-off the pipe.
 Distance from CCL to centre of charge was 5.04m. CCL located at 295.9m MD to fire charge.

Crew:
 Paul Flood, Peter Lawrence, Rob Duncan, Tim Osler

RUN 1			RUN 2		
SERVICE ORDER #:			SERVICE ORDER #:		
PROGRAM VERSION: 11C0-305			PROGRAM VERSION:		
FLUID LEVEL: 0 m			FLUID LEVEL:		
LOGGED INTERVAL	START	STOP	LOGGED INTERVAL	START	STOP

EQUIPMENT DESCRIPTION

RUN 1	RUN 2
<p style="text-align: center;">SURFACE EQUIPMENT</p> <p>WITM (SHM)</p>	Empty space for Run 2 equipment description
<p style="text-align: center;">DOWNHOLE EQUIPMENT</p> <div style="display: flex; justify-content: space-between; align-items: flex-start;"> <div style="width: 60%;"> <p>MH-22 MH-22</p> <p>CCL-L CCL-L</p> </div> <div style="width: 30%; text-align: center;">  <p>CCL Secure Se</p> </div> <div style="width: 10%; text-align: right;"> <p>6.94</p> <p>6.46</p> </div> </div>	



Client: OMV Australia Pty Ltd Drawing Date: 10/4/2004
 Well: Baleen-4 API #:
 Field: OMV - Baleen Rig Name: Ocean Bounty
 State: Victoria Reference Datum: Mean Sea Level
 Country: Australia Elevation: 25.0 m

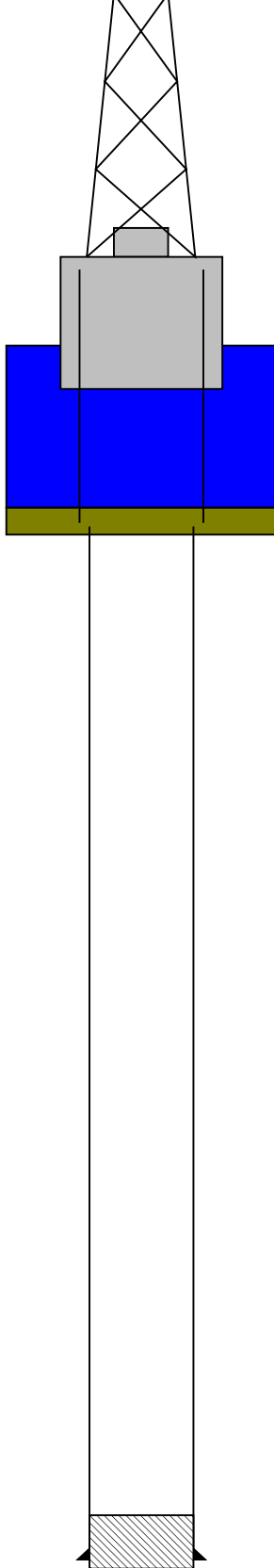
Production String	(in)	(m)	Well Schematic	(m)	(in)	Casing String
	OD	ID		MD	MD	

Kelly Bushing Elevation
Derrick Floor Elevation

Mean Sea Level

0.0
0.0

25.0



0.0 20.000

81.0 20.000
81.0 13.375

Casing String

Casing Shoe
Casing String

320.0
327.0 13.375

PBTD
Casing Shoe

Schlumberger

Operational Summary Listing

MAXIS Field Log

PERFO2 Operational Summary Listing

Device	Status	Req Depth (M)	Obs Depth (M)	Time Used
GUN1	Used	300.9	300.9	Thu Oct 07 11:00:51 2004

Schlumberger

Backoff Pass

Company: OMV Australia Pty Ltd

Well: Baleen-4

Output DLIS Files

DEFAULT PERFO_036LUP FN:35 PRODUCER 07-Oct-2004 10:46

OP System Version: 11C0-305

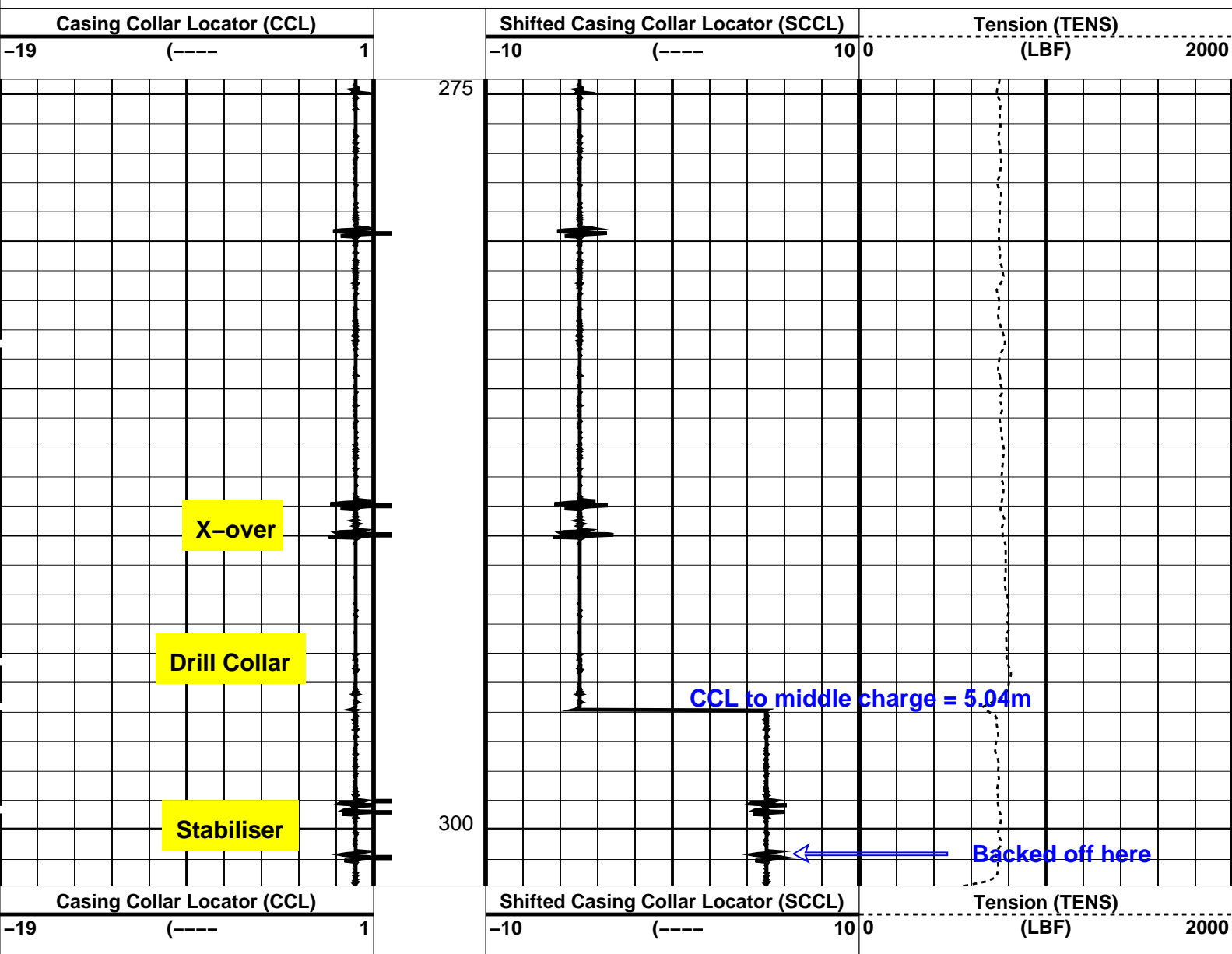
MCM

SHM_GUN OP11-KP1 CCL-L 11C0-305

PIP SUMMARY

← Casing Collars

Time Mark Every 60 S



PIP SUMMARY

← Casing Collars

Time Mark Every 60 S

Parameters

DLIS Name	Description	Value
CCLD	CCL-L: Casing Collar Locator CCL reset delay	12 IN

OP System Version: 11C0-305

MCM

SHM_GUN

OP11-KP1

CCL-L

11C0-305

Output DLIS Files

DEFAULT

PERFO_036LUP

FN:35

PRODUCER

07-Oct-2004 10:46

Company: **OMV Australia Pty Ltd****Schlumberger**Well: **Baleen-4**Field: **OMV-Baleen**State: **Victoria**Country: **Australia**

Back-off

Scale 1:200