



**Company:** OMV Australia Pty Ltd  
**Well:** Baleen-4  
**Field:** OMV-Baleen  
**State:** Victoria  
**Country:** Australia

**State:** Victoria  
**Field:** OMV-Baleen  
**Location:** ADG84 / AMG84 Zone 55  
**Well:** Baleen-4  
**Company:** OMV Australia Pty Ltd

<b>Logging Date</b>	<b>Scale 1:200</b>	
	<b>Back-off</b>	
<b>Run Number</b>	5-Oct-2004	<b>Max. Well Deviation</b> 10 deg
<b>Depth Driller</b>	6	<b>Longitude</b> 148 26' 34.417" E
<b>Schlumberger Depth</b>	320 m	<b>Latitude</b> 38 00' 20.986" S
<b>Bottom Log Interval</b>	289.7 m	
<b>Top Log Interval</b>	289.7 m	
<b>Casing Fluid Type</b>	Oil-Based Mud	
<b>Salinity</b>		
<b>Density</b>	9.3 g/cm3	
<b>Fluid Level</b>	0 m	
<b>BIT/CASING/TUBING STRING</b>		
<b>Bit Size</b>	16.000 in	
<b>From</b>	112 m	
<b>To</b>	320 m	
<b>Casing/Tubing Size</b>	13.375 in	
<b>Weight</b>	68 lbm/ft	
<b>Grade</b>	K-55	
<b>From</b>	81 m	
<b>To</b>	327 m	
<b>Maximum Recorded Temperatures</b>		
<b>Logger On Bottom</b>	6-Oct-2004	8:35
<b>Unit Number</b>	25	VEA
<b>Recorded By</b>	G.Ruthven / T.Awobadejo	
<b>Witnessed By</b>	C.Roots / H.Heinzle	

PVT DATA		
	Run 1	Run 2
Oil Density		
Water Salinity		
Gas Gravity		
Bo		
Bw		
1/Bg		
Bubble Point Pressure		
Bubble Point Temperature		
Solution GOR		
Maximum Deviation	10 deg	
CEMENTING DATA		
Primary/Squeeze	Primary	
Casing String No		
Lead Cement Type		
Volume		
Density		
Water Loss		
Addives		
Tail Cement Type		
Volume		
Density		
Water Loss		
Additives		
Expected Cement Top		
<b>Logging Date</b>		
<b>Run Number</b>		
<b>Depth Driller</b>		
<b>Schlumberger Depth</b>		
<b>Bottom Log Interval</b>		
<b>Top Log Interval</b>		
<b>Casing Fluid Type</b>		
<b>Salinity</b>		
<b>Density</b>		
<b>Fluid Level</b>		
<b>BIT/CASING/TUBING STRING</b>		
<b>Bit Size</b>		
<b>From</b>		
<b>To</b>		
<b>Casing/Tubing Size</b>		
<b>Weight</b>		
<b>Grade</b>		
<b>From</b>		
<b>To</b>		
<b>Maximum Recorded Temperatures</b>		
<b>Logger On Bottom</b>		
<b>Unit Number</b>		
<b>Recorded By</b>		
<b>Witnessed By</b>		

**DISCLAIMER**  
 THE USE OF AND RELIANCE UPON THIS RECORDED-DATA BY THE HEREIN NAMED COMPANY (AND ANY OF ITS AFFILIATES, PARTNERS, REPRESENTATIVES, AGENTS, CONSULTANTS AND EMPLOYEES) IS SUBJECT TO THE TERMS AND CONDITIONS AGREED UPON BETWEEN SCHLUMBERGER AND THE COMPANY, INCLUDING: (a) RESTRICTIONS ON USE OF THE RECORDED-DATA; (b) DISCLAIMERS AND WAIVERS OF WARRANTIES AND REPRESENTATIONS REGARDING COMPANY'S USE OF AND RELIANCE UPON THE RECORDED-DATA; AND (c) CUSTOMER'S FULL AND SOLE RESPONSIBILITY FOR ANY INFERENCE DRAWN OR DECISION MADE IN CONNECTION WITH THE USE OF THIS RECORDED-DATA.

OTHER SERVICES1  
 OS1:  
 OS2:  
 OS3:  
 OS4:  
 OS5:



REMARKS: RUN NUMBER 1

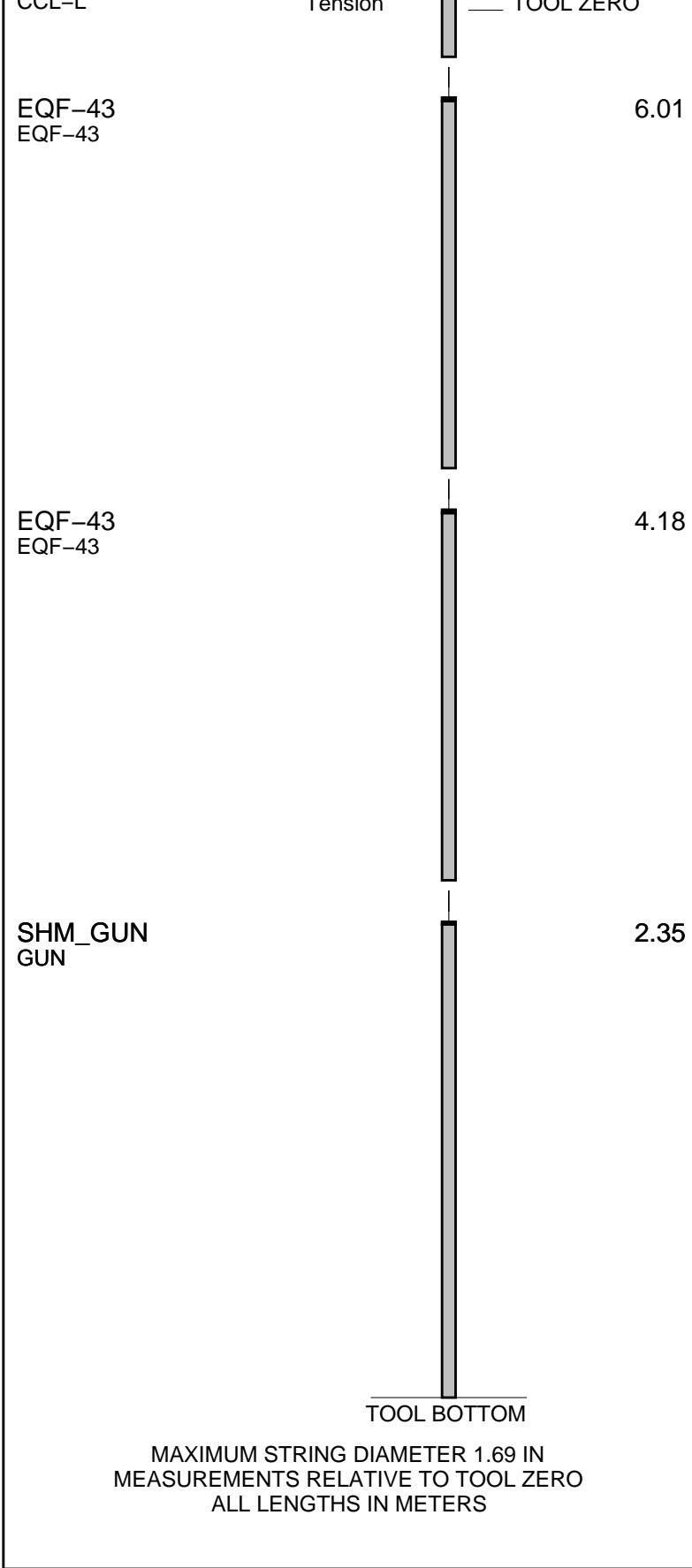
Log compared to drill pipe & BHA configuration diagram provided by company man, but no depth correction applied.  
 A 5-strand back-off charge was fired at 289.7m MD to back-off the pipe.  
 Distance from CCL to centre of charge was 5.15m. CCL located at 284.5m MD to fire charge.

Crew:  
 Paul Flood, Peter Lawrence, Rob Duncan, Tim Osler

RUN 1			RUN 2		
SERVICE ORDER #:			SERVICE ORDER #:		
PROGRAM VERSION:			PROGRAM VERSION:		
FLUID LEVEL:			FLUID LEVEL:		
LOGGED INTERVAL	START	STOP	LOGGED INTERVAL	START	STOP
		11C0-305 0 m			

## EQUIPMENT DESCRIPTION

RUN 1	RUN 2
SURFACE EQUIPMENT	
WITM (SHM)	
DOWNHOLE EQUIPMENT	
MH-22 MH-22	6.94
	
CCL-L CCL-L	6.46
	
CCL Secure Se Tension	TOOL ZERO

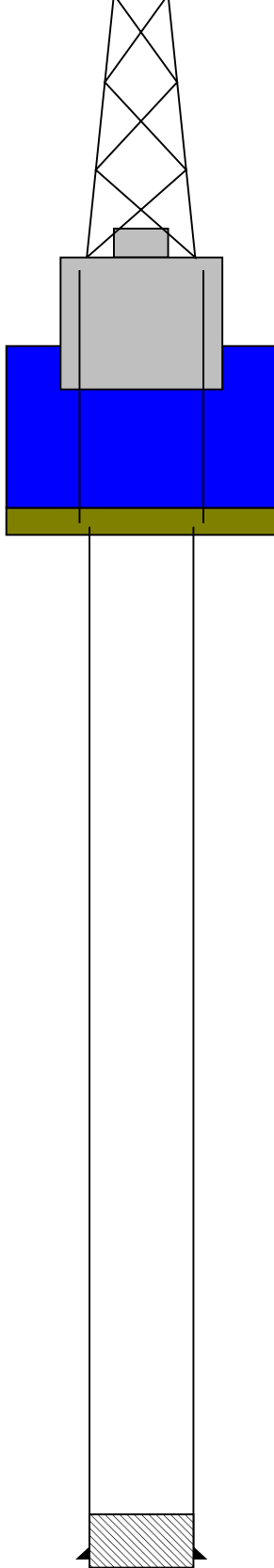


Client: OMV Australia Pty Ltd Drawing Date: 10/4/2004  
 Well: Baleen-4 API #:  
 Field: OMV - Baleen Rig Name: Ocean Bounty  
 State: Victoria Reference Datum: Mean Sea Level  
 Country: Australia Elevation: 25.0 m

Production String	(in)	(m)	Well Schematic	(m)	(in)	Casing String
	OD	ID		MD	MD	

Kelly Bushing Elevation  
Derrick Floor Elevation  
  
Mean Sea Level

0.0  
0.0  
  
25.0



0.0 20.000  
  
81.0 20.000  
81.0 13.375

Casing String  
  
Casing Shoe  
Casing String

320.0  
327.0 13.375

PBT  
Casing Shoe

**Schlumberger**

**Operational Summary Listing**

MAXIS Field Log

PERFO2 Operational Summary Listing

Device Status Req Depth ( M) Obs Depth ( M) Time Used

-----  
GUN1 Used 289.7 289.7 Wed Oct 06 08:54:14 2004

**Schlumberger**

**Backoff Pass**

Company: OMV Australia Pty Ltd

Well: Baleen-4

### Output DLIS Files

DEFAULT PERFO\_029LUP FN:28 PRODUCER 06-Oct-2004 08:38 301.9 M 251.9 M

### OP System Version: 11C0-305

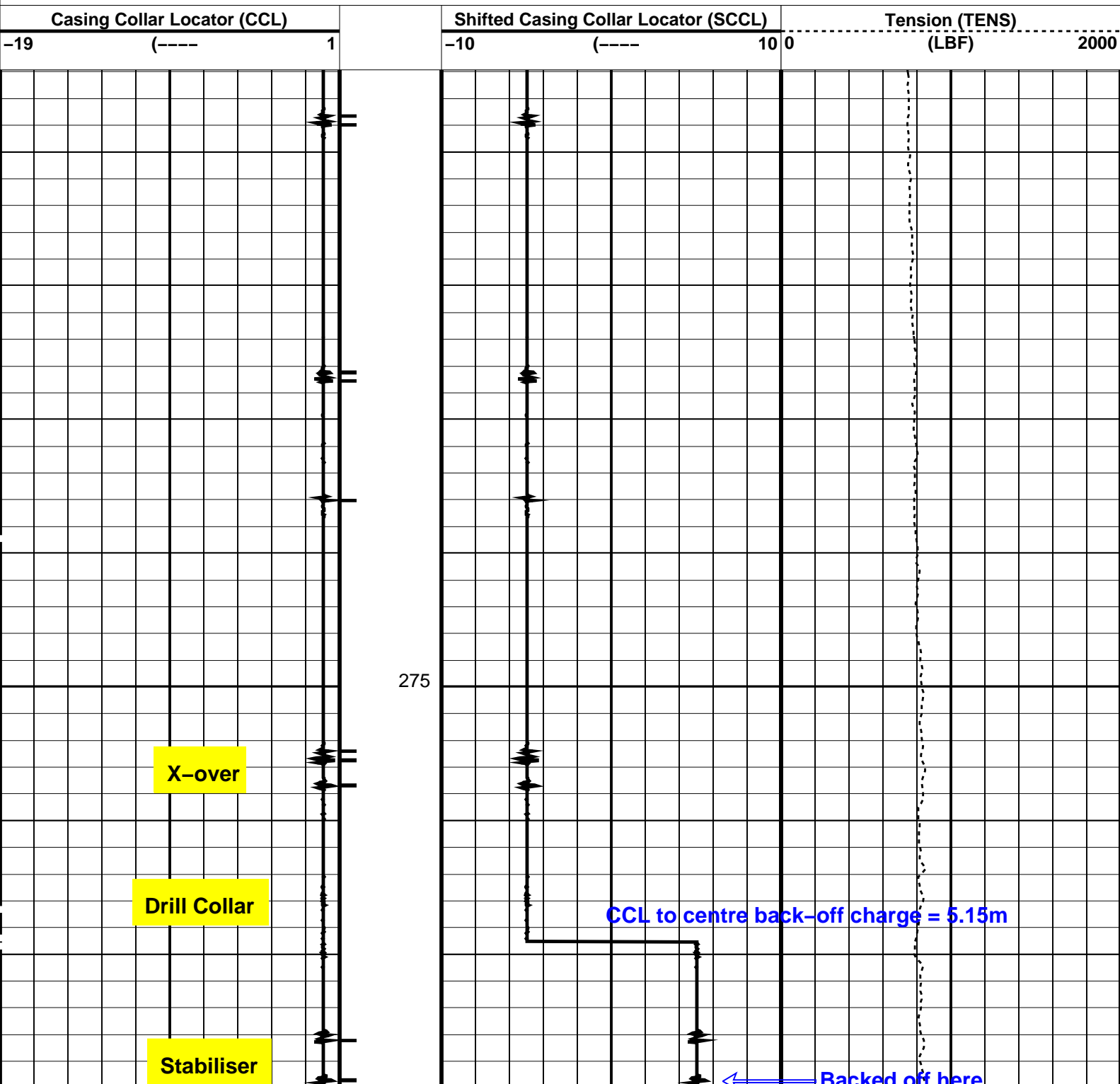
MCM

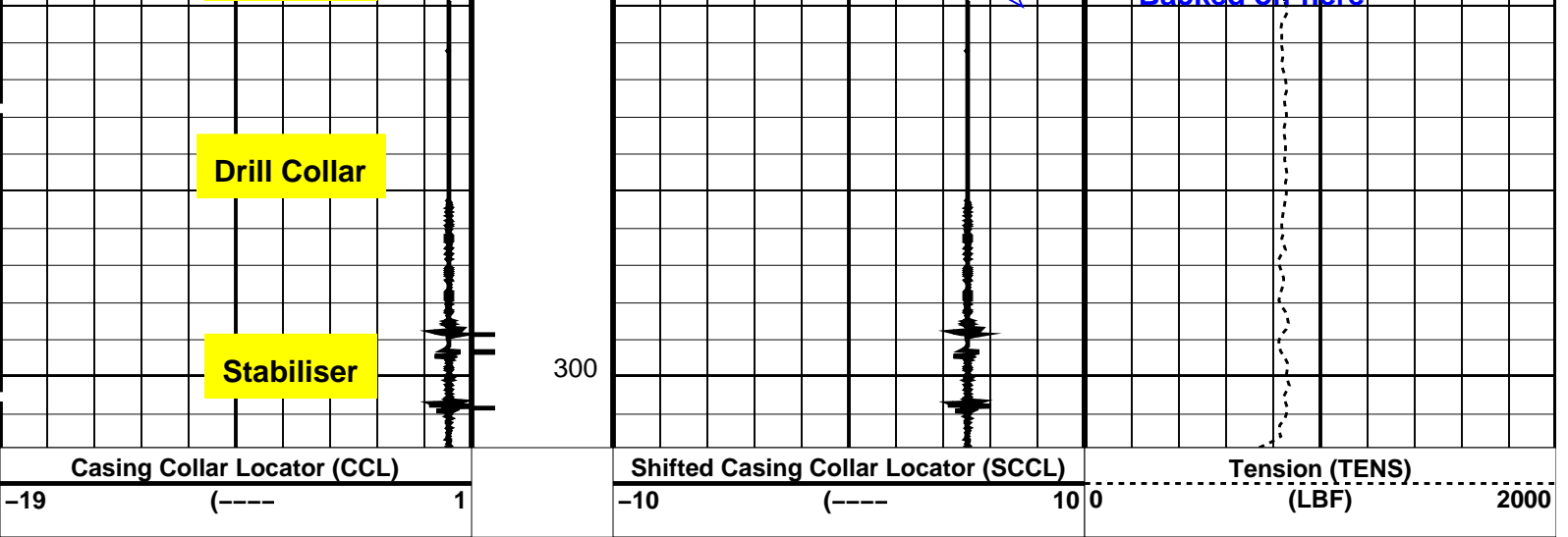
SHM\_GUN OP11-KP1 CCL-L 11C0-305

#### PIP SUMMARY

└ Casing Collars

Time Mark Every 60 S





PIP SUMMARY

← Casing Collars

Time Mark Every 60 S

Parameters

DLIS Name	Description	Value
CCL-L	Casing Collar Locator	
CCLD	CCL reset delay	12 IN
CCLT	CCL Detection Level	0.3 V

Format: PERFO Vertical Scale: 1:200 Graphics File Created: 06-Oct-2004 08:38

OP System Version: 11C0-305

MCM

SHM\_GUN OP11-KP1 CCL-L 11C0-305

Output DLIS Files

DEFAULT PERFO\_029LUP FN:28 PRODUCER 06-Oct-2004 08:38

Company: **OMV Australia Pty Ltd**

**Schlumberger**

Well: **Baleen-4**  
 Field: **OMV-Baleen**  
 State: **Victoria**  
 Country: **Australia**

Back-off

Scale 1:200