

ENCLOSURE 2



DEPT. NAT. RES. & ENV  
PE600967

**AYU-1**  
LOGCALC2 OUTPUT 1:500  
SHALY SAND INTERPRETATION  
BY PETROFINA

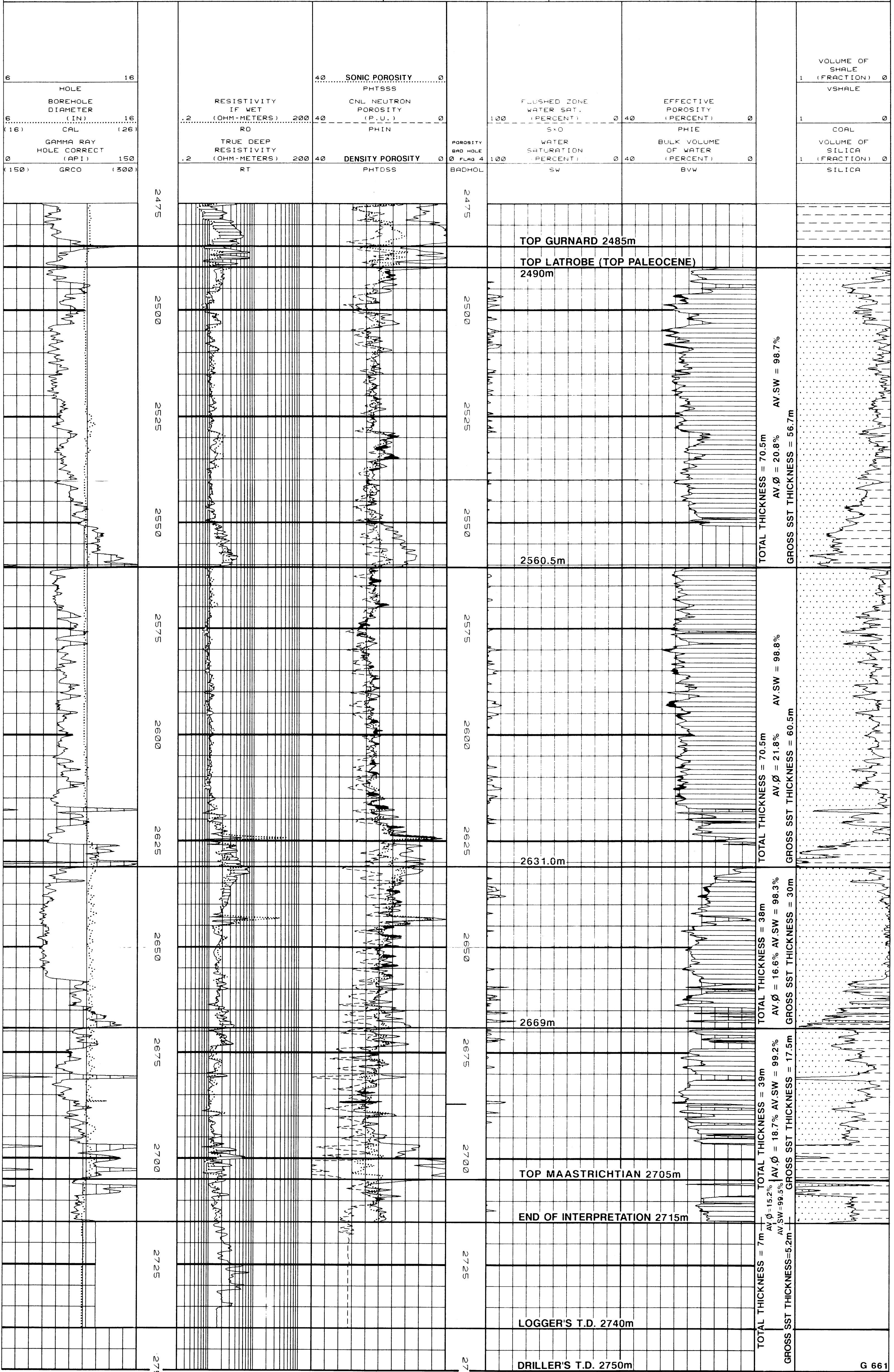
J.M. Q. FEB. 1990

RW = 0.075 OHM @ 197° F  
RW = 0.075 OHM @ 2740m  
FORMATION WATER SALINITY  
= 40.000ppm NaCl equivalent

$F = a \phi^m$   
 $F = 0.62 \phi^{2.15}$

$\rho_{ma} = 2.65g/cc$   
 $t_{ma} = 564 sec ft$

GROSS SST = PHIE > 6%  
VSHALE < 40%  
NET SST = PHIE > 6%  
VSHALE < 40%  
SW < 50%



TOTAL THICKNESS = 70.5m  
AV.  $\phi$  = 20.8%  
AV. SW = 98.7%  
GROSS SST THICKNESS = 56.7m

TOTAL THICKNESS = 70.5m  
AV.  $\phi$  = 21.8%  
AV. SW = 98.8%  
GROSS SST THICKNESS = 60.5m

TOTAL THICKNESS = 38m  
AV.  $\phi$  = 16.6%  
AV. SW = 98.3%  
GROSS SST THICKNESS = 30m

TOTAL THICKNESS = 39m  
AV.  $\phi$  = 18.7%  
AV. SW = 99.2%  
GROSS SST THICKNESS = 17.5m

TOTAL THICKNESS = 7m  
AV.  $\phi$  = 15.2%  
AV. SW = 99.5%  
GROSS SST THICKNESS = 5.2m