



# Warracbarunah No. 2

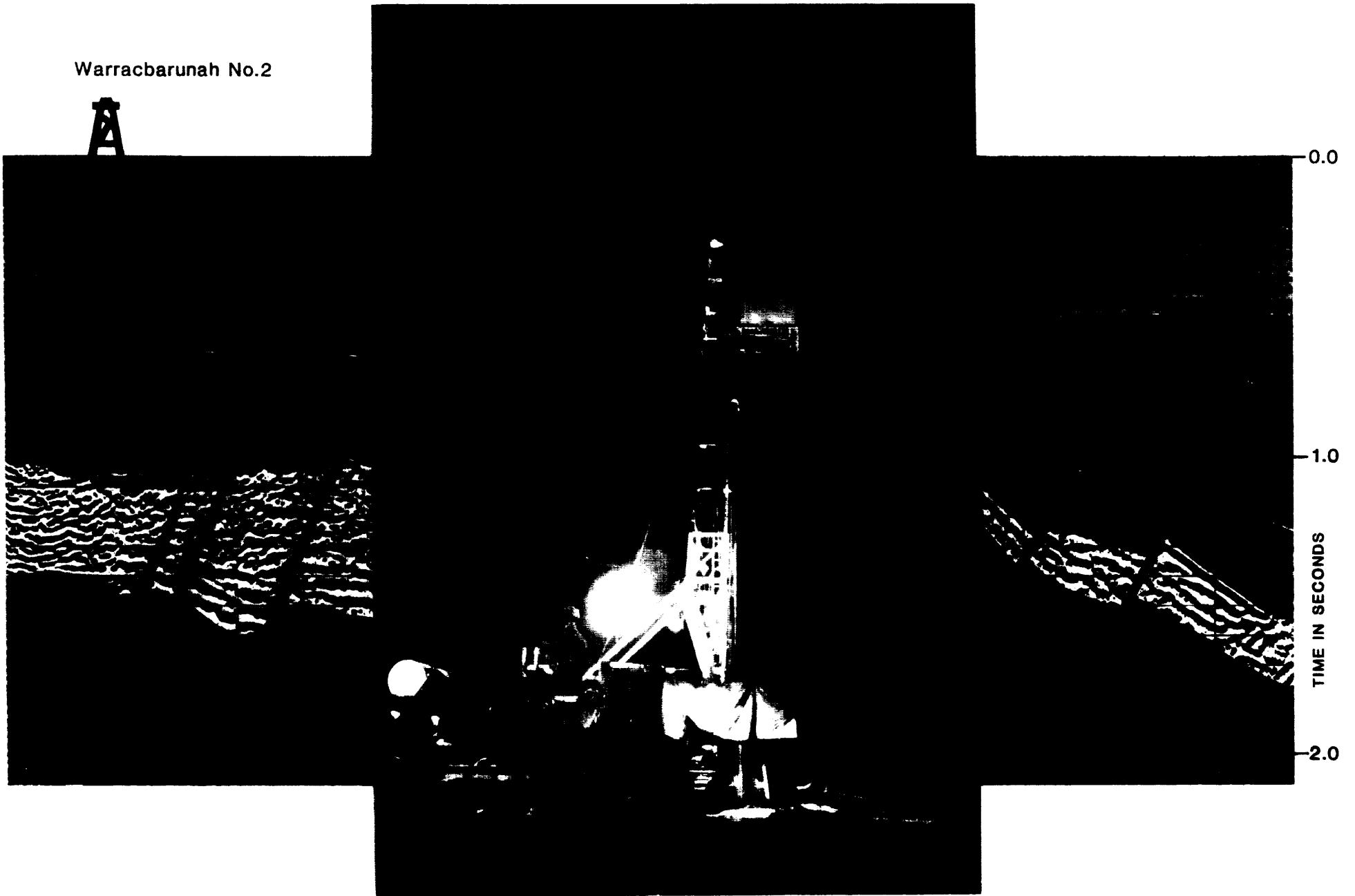
## Well Completion Report

WCR vol. 2

Warracbarunah-2 (W1042)

DEPT. NAT. RES & ENV  
PE902072

Warracbarunah No.2



Geological Survey of Victoria  
Basin Studies



Department of  
Manufacturing  
and Industry  
Development

**VOL. II: ENCLOSURES**

**1991**



EXPLORATION DIVISION

20 JAN 1992

# GEOLOGICAL SURVEY OF VICTORIA

## BASIN STUDIES

# Warracbarunah 2

---

## Well completion report

Unpublished report No.1991/66

Volume 2  
Enclosures



Department of  
Manufacturing  
and Industry  
Development

Prepared by:  
Ahmad Tabassi  
Cliff Menhennitt

# **ENCLOSURE**

# **I**

## **COMPOSITE WELL LOG**

PE600912

This is an enclosure indicator page.  
The enclosure PE600912 is enclosed within the  
container PE902072 at this location in this  
document.

The enclosure PE600912 has the following characteristics:

ITEM\_BARCODE = PE600912  
CONTAINER\_BARCODE = PE902072  
    NAME = Composite well log  
    BASIN = OTWAY  
    PERMIT = PEP 100  
    TYPE = WELL  
    SUBTYPE = COMPOSITE\_LOG  
    DESCRIPTION = Composite well log (enclosure 1 from  
                  WCR vol.2) for Warracbarunah-2  
    REMARKS =  
    DATE\_CREATED = 12/04/91  
    DATE\_RECEIVED = 29/01/92  
    W\_NO = W1042  
    WELL\_NAME = Warracbarunah-2  
    CONTRACTOR =  
    CLIENT\_OP\_CO = Geological Survey of Victoria

(Inserted by DNRE - Vic Govt Mines Dept)

# **ENCLOSURE**

## **II**

**MUD LOG**

PE600913

This is an enclosure indicator page.  
The enclosure PE600913 is enclosed within the  
container PE902072 at this location in this  
document.

The enclosure PE600913 has the following characteristics:

ITEM\_BARCODE = PE600913  
CONTAINER\_BARCODE = PE902072  
    NAME = Mud Log  
    BASIN = OTWAY  
    PERMIT = PEP 100  
    TYPE = WELL  
    SUBTYPE = MUD\_LOG  
    DESCRIPTION = Mud Log (enclosure 2 from WCR vol.2)  
                  for Warracbarunah-2  
    REMARKS =  
    DATE\_CREATED = 26/03/91  
    DATE\_RECEIVED = 29/01/92  
    W\_NO = W1042  
    WELL\_NAME = Warracbarunah-2  
    CONTRACTOR =  
    CLIENT\_OP\_CO = Geological Survey of Victoria

(Inserted by DNRE - Vic Govt Mines Dept)

# **ENCLOSURE**

## **III**

**WIRELINER LOGS**

PE600914

This is an enclosure indicator page.  
The enclosure PE600914 is enclosed within the  
container PE902072 at this location in this  
document.

The enclosure PE600914 has the following characteristics:

- ITEM\_BARCODE = PE600914
- CONTAINER\_BARCODE = PE902072
- NAME = Dual Laterolog MLL MRS SP Sonic GR Cal
- BASIN = OTWAY
- PERMIT = PEP 100
- TYPE = WELL
- SUBTYPE = WELL\_LOG
- DESCRIPTION = Dual Laterolog MLL MRS SP Sonic GR Cal,  
1:200, (enclosure 3 from WCR vol.2) for  
Warracbarunah-2
- REMARKS =
- DATE\_CREATED = 27/03/91
- DATE\_RECEIVED = 29/01/92
- W\_NO = W1042
- WELL\_NAME = Warracbarunah-2
- CONTRACTOR = BPB
- CLIENT\_OP\_CO = Geological Survey of Victoria

(Inserted by DNRE - Vic Govt Mines Dept)



PE600915

This is an enclosure indicator page.  
The enclosure PE600915 is enclosed within the  
container PE902072 at this location in this  
document.

The enclosure PE600915 has the following characteristics:

- ITEM\_BARCODE = PE600915
- CONTAINER\_BARCODE = PE902072
- NAME = Dual Laterolog MLL MRS SP Sonic GR Cal
- BASIN = OTWAY
- PERMIT = PEP 100
- TYPE = WELL
- SUBTYPE = WELL\_LOG
- DESCRIPTION = Dual Laterolog MLL MRS SP Sonic GR Cal,  
1:500, (enclosure 3 from WCR vol.2) for  
Warracbarunah-2
- REMARKS =
- DATE\_CREATED = 27/03/91
- DATE\_RECEIVED = 29/01/92
- W\_NO = W1042
- WELL\_NAME = Warracbarunah-2
- CONTRACTOR = BPB
- CLIENT\_OP\_CO = Geological Survey of Victoria

(Inserted by DNRE - Vic Govt Mines Dept)

# **ENCLOSURE**

## **IV**

**SCHEMATIC GEOLOGICAL  
CROSS-SECTION  
THROUGH WARRACBARUNAH NO.2**

PE902073

This is an enclosure indicator page.  
The enclosure PE902073 is enclosed within the  
container PE902072 at this location in this  
document.

The enclosure PE902073 has the following characteristics:

ITEM\_BARCODE = PE902073  
CONTAINER\_BARCODE = PE902072  
    NAME = Schematic Geological Cross Section  
    BASIN = OTWAY  
    PERMIT = PEP 100  
    TYPE = WELL  
    SUBTYPE = CROSS\_SECTION  
DESCRIPTION = Schematic Geological Cross Section  
              through Warracbarunah-2 Stratigraphic  
              well (enclosure 4 from WCR vol.2) for  
              Warracbarunah-2  
REMARKS =  
DATE\_CREATED = 31/10/91  
DATE\_RECEIVED = 29/01/92  
    W\_NO = W1042  
    WELL\_NAME = Warracbarunah-2  
CONTRACTOR = Geological Survey of Victoria-Basin  
              Studies  
CLIENT\_OP\_CO = Geological Survey of Victoria

(Inserted by DNRE - Vic Govt Mines Dept)

# **ENCLOSURE**

## **V**

**LOG INTERPRETATION**

TO BE SUPPLIED