

COMPOSITE DISPLAY

Company: W.U.G.S.  
 Well: Iona 4  
 Field: Iona  
 County: Australia  
 State: Victoria  
 SRD: MSL  
 Job Ref No.: 561286

Source Type: Airgun  
 Offset: 424.5 m  
 Azimuth: 263 deg.

APPENDIX 7  
 Plot 6  
 Composite Display Normal Polarity  
 is: 50cm

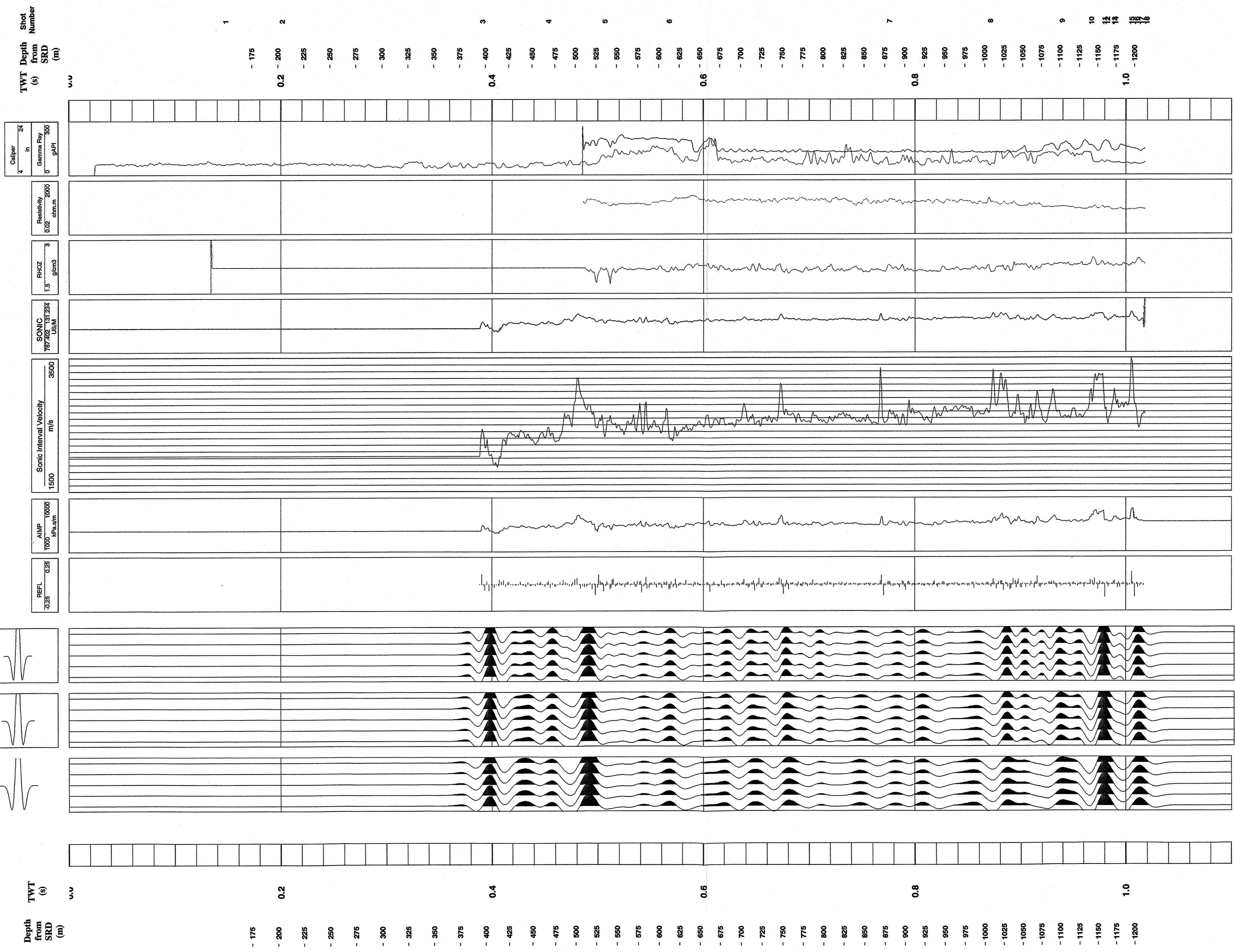


- Correlation Curve **GAMMA RAY CALIPER**
- Correlation Curve **RESISTIVITY**
- Correlation Curve **DENSITY**
- SONIC
- SONIC INTERVAL VELOCITY
- ACOUSTIC IMPEDANCE
- REFLECTION COEFFICIENT

- Zero Phase Ricker Wavelet 35 HZ  
 Increase in Acoustic Impedance is a Peak  
 Increase in Acoustic Impedance is a Trough
- Zero Phase Ricker Wavelet 30 HZ  
 Increase in Acoustic Impedance is a Peak  
 Increase in Acoustic Impedance is a Trough
- Zero Phase Ricker Wavelet 25 HZ  
 Increase in Acoustic Impedance is a Peak  
 Increase in Acoustic Impedance is a Trough

Plot #6 Composite Display ( Normal Polarity)  
 Processing Steps:  
 (1) Load Data  
 (2) Edit Bad Records

Display Parameters:  
 Scale: 25 cm/s  
 Normal Polarity: Increase in Acoustic Impedance is a Trough



Shot Number  
 1 2 3 4 5 6 7 8 9 10 11 12 13 14 15 16

TWT Depth from SRD (s) (m)  
 0.2 0.4 0.6 0.8 1.0

Caliper 4 in 32  
 Gamma Ray 0 305 gAPI

Resistivity 0.02 2000 ohm-cm

Density 1.5 g/cm<sup>3</sup>

SONIC 787.02 1317.234 US/m

Sonic Interval Velocity 1500 3500 m/s

AMP 1000 10000 Pa/cm

REFL 0.25 2.25

Depth from SRD (m)  
 -175 -200 -225 -250 -275 -300 -325 -350 -375 -400 -425 -450 -475 -500 -525 -550 -575 -600 -625 -650 -675 -700 -725 -750 -775 -800 -825 -850 -875 -900 -925 -950 -975 -1000 -1025 -1050 -1075 -1100 -1125 -1150 -1175 -1200