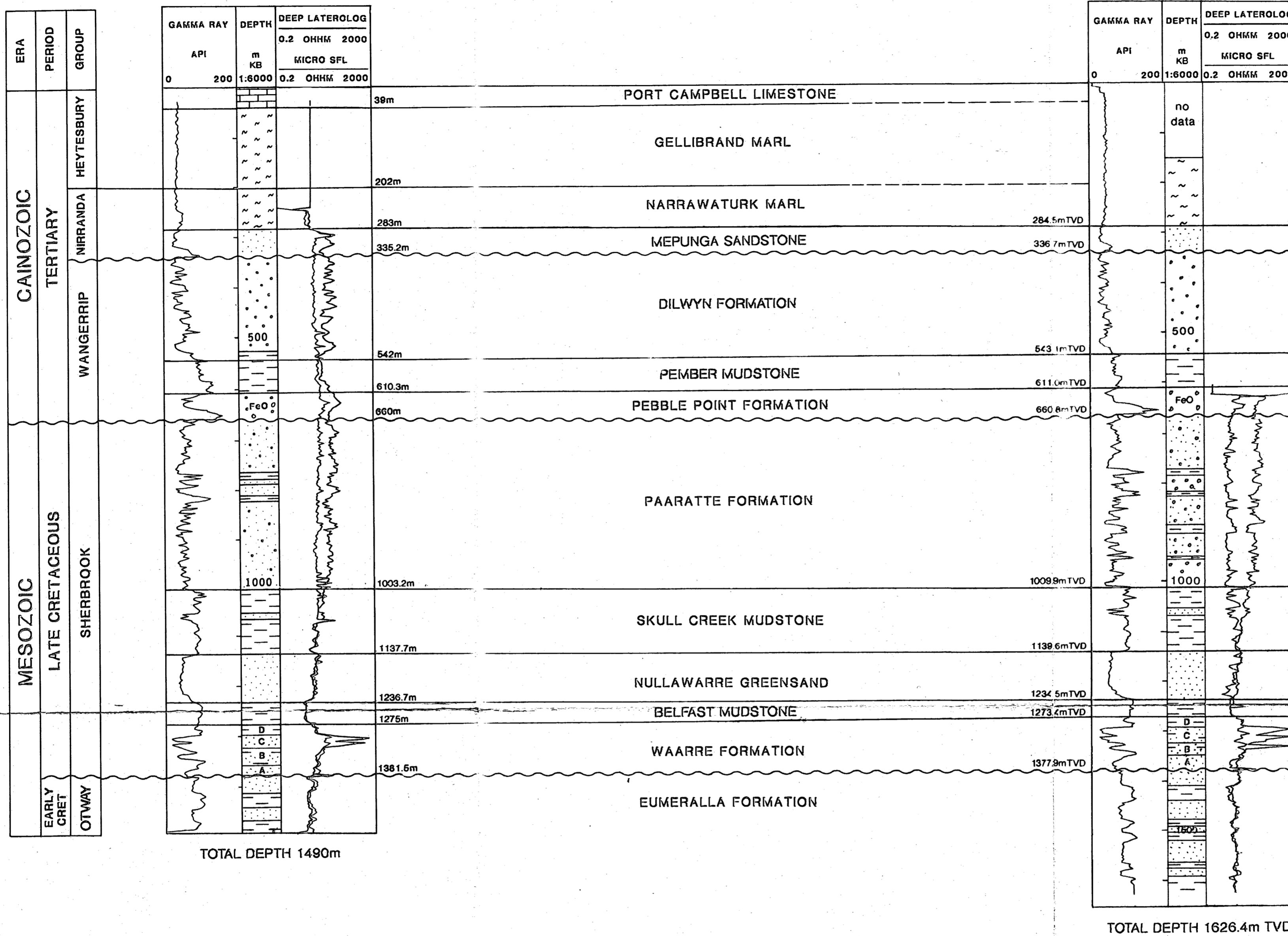


IONA-1


KB: 131.4m AMSL

IONA-2

KB: 134.2m AMSL



- NOTE:
- ◀ Datum for both wells is Kelly bushing (KB).
 - ◀ Iona-1 was a vertical well.
 - ◀ Iona-2 was a deviated hole below 320m, so all depths shown for it are adjusted to True Vertical Depth and the log profiles shown have been compressed accordingly.



PPL Resources Ltd

PPL2 OTWAY BASIN
STRATIGRAPHIC CORRELATION
IONA-1 AND IONA-2

DEPT. NAT. RES. & ENV.
PE906676

AUTHOR: V. AKBARI / K. LANIGAN	APPROVED:
DATE: AUGUST 1994	FIGURE: 6
SCALE: VERTICAL AS SHOWN; HORIZONTAL SCHEMATIC	DRG No. OT.4715
DRAWN BY:	