

**WALLABY CK #1**

**WALLABY CK #2**

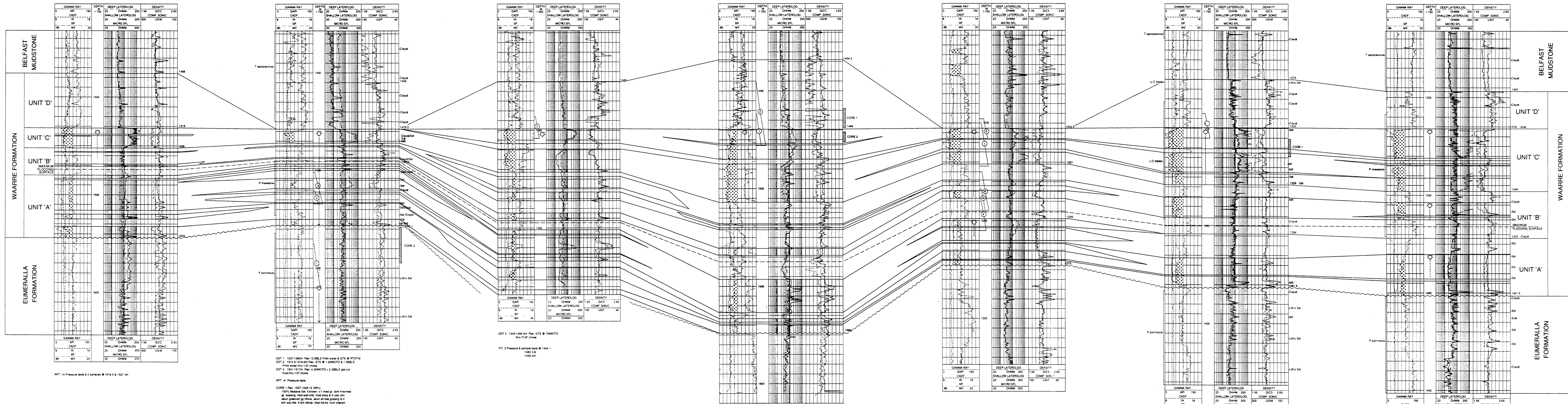
**NTH PAARATTE #1**

**NTH PAARATTE #2**

**SKULL CREEK #1**

**IONA #1**

**IONA #2**



DST 1: 1501-1505m Rec: 1505.8m Rec: 1512.5m Rec: 1521.5m  
 DST 2: 1510.5-1516.8m Rec: 1516.8m Rec: 1521.5m Rec: 1521.5m  
 DST 3: 1501-1517m Rec: 1501.0m Rec: 1501.0m Rec: 1501.0m

RFT: 14 Pressure tests & 2 samples @ 1516.5 & 1521.5m

RFT: 15 Pressure tests

CORE 1: Rec: 1501-1505.8m (100%)  
 100% Massive Sandstone. V. fine gr. sandstone with abundant siltstone and shale. Moderate to high porosity. Some greenish grey shales. About 40% porosity to 1.5m depth. 1.5m to 1.8m thin, red shales, high porosity. No oil flow.

CORE 2: Rec: 1505.8-1516.8m (100%)  
 100% Massive Sandstone. V. fine gr. sandstone with abundant siltstone and shale. Moderate to high porosity. Some greenish grey shales. About 40% porosity to 1.5m depth. 1.5m to 1.8m thin, red shales, high porosity. No oil flow.

DST 1: 1443-1454.2m Rec: 1454.2m Rec: 1454.2m  
 DST 2: 1443-1454.2m Rec: 1454.2m Rec: 1454.2m

RFT: 3 Pressure tests & 2 samples @ 1454.1 & 1454.3m

RFT: 18 Pressure tests & 2 samples @ 1451 & 1475m

CORE 1: Rec: 1443-1454.2m (100%)  
 100% Massive Sandstone. V. fine gr. sandstone with abundant siltstone and shale. Moderate to high porosity. Some greenish grey shales. About 40% porosity to 1.5m depth. 1.5m to 1.8m thin, red shales, high porosity. No oil flow.

CORE 2: Rec: 1454.2-1475m (100%)  
 100% Massive Sandstone. V. fine gr. sandstone with abundant siltstone and shale. Moderate to high porosity. Some greenish grey shales. About 40% porosity to 1.5m depth. 1.5m to 1.8m thin, red shales, high porosity. No oil flow.

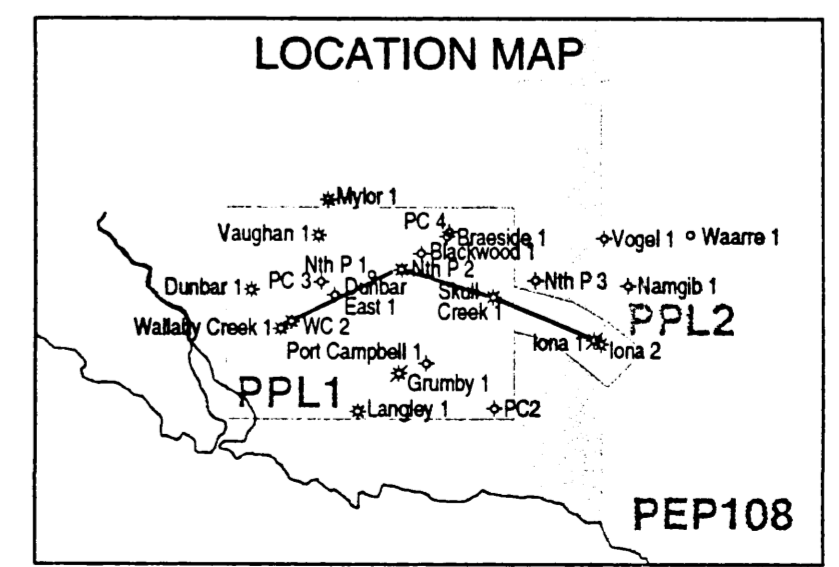
DST 1: 1200-1220m (100%)  
 DST 2: 1194-1205m Flashed DST @ 11.94m Rec: 1205m  
 DST 3: 1254-1245m Flashed DST @ 12.54m Rec: 1245m  
 DST 4: 1245-1245m Flashed DST @ 12.45m Rec: 1245m  
 DST 5: 1245-1245m Flashed DST @ 12.45m Rec: 1245m  
 DST 6: 1245-1245m Flashed DST @ 12.45m Rec: 1245m

RFT: 15 Pressure tests & 1 sample @ 1237.5m

RFT: 26 Pressure tests & 1 fluid sample @ 1361.5m

CORE 1: Rec: 1200-1220m (100%)  
 100% Massive Sandstone. V. fine gr. sandstone with abundant siltstone and shale. Moderate to high porosity. Some greenish grey shales. About 40% porosity to 1.5m depth. 1.5m to 1.8m thin, red shales, high porosity. No oil flow.

CORE 2: Rec: 1220-1245m (100%)  
 100% Massive Sandstone. V. fine gr. sandstone with abundant siltstone and shale. Moderate to high porosity. Some greenish grey shales. About 40% porosity to 1.5m depth. 1.5m to 1.8m thin, red shales, high porosity. No oil flow.



**CULTUS PETROLEUM N.L.**

ONSHORE OTWAY BASIN - VICTORIA  
**PPL1 & PPL2**  
**WALLABY CREEK-1 TO IONA-2**  
**STRATIGRAPHIC CORRELATION**  
**WAARRE FORMATION**

AUTHOR: R.JASON      DATE: AUGUST 1996  
 DRAWN: M.A.COCHRANE      FILE: OTWAY-WAARRE.DGN

PEP108

