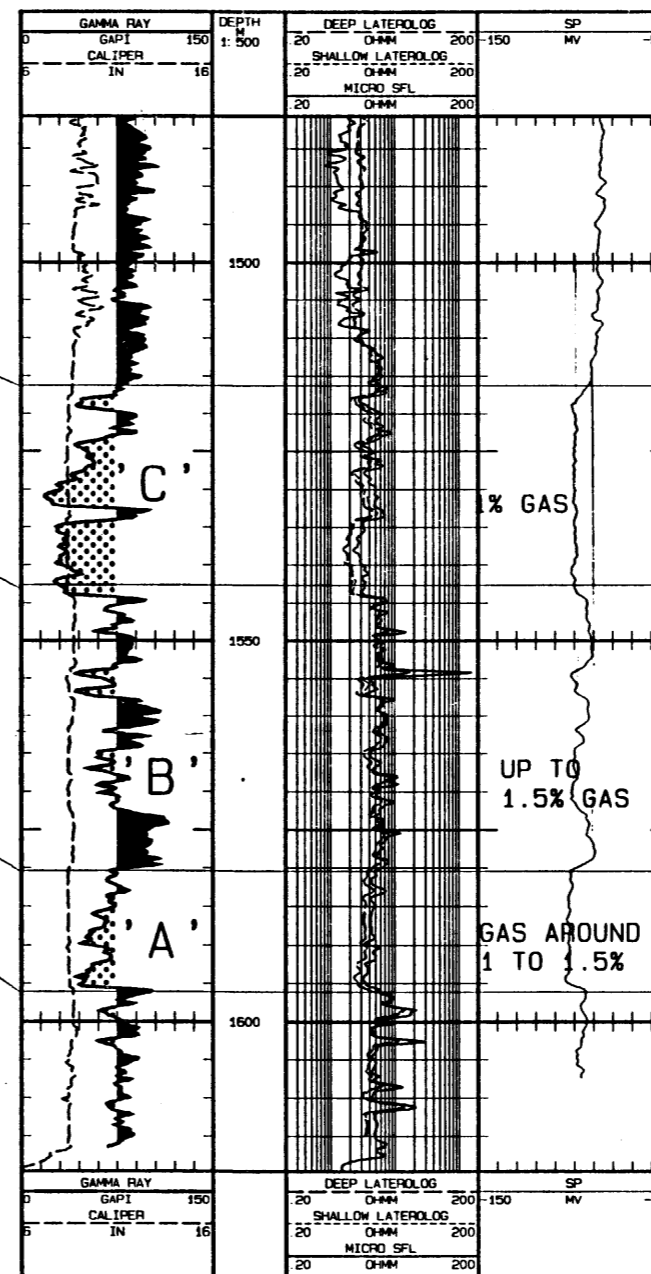
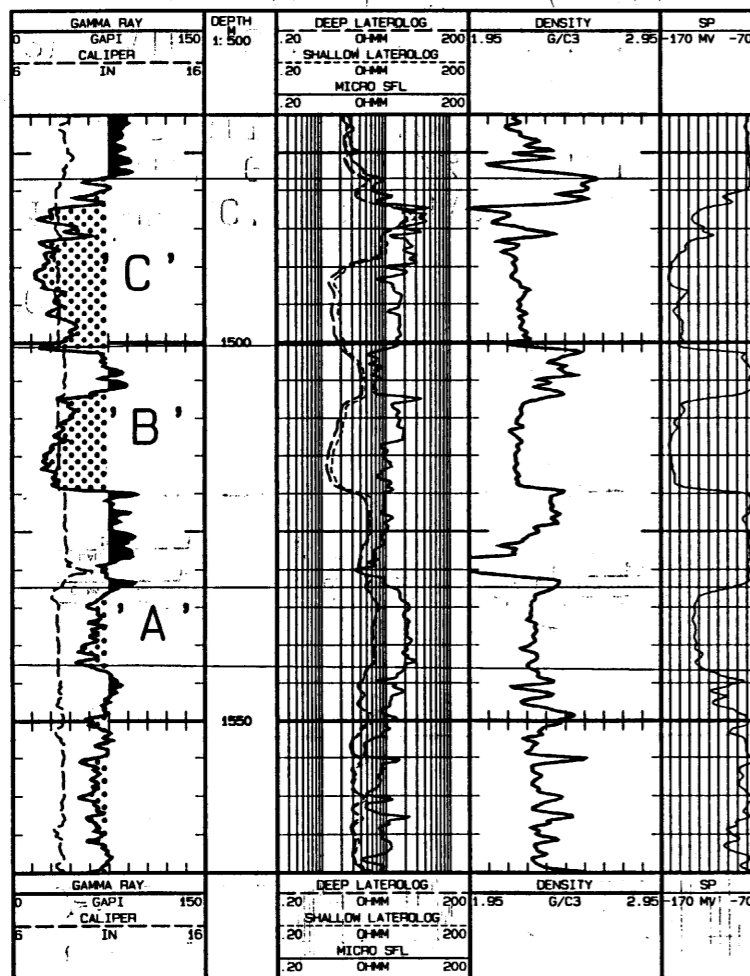


# CROSS SECTION THROUGH DUNBAR-1 AND DUNBAR EAST-1

DEPT. NAT. RES & ENV  
  
 PE905735

Δ OHMS RESISTIVITY  
 TOP 101V EV2  
 (3) V. 2V/MV HV  
**DUNBAR-1**

**DUNBAR EAST-1**



7% GAS  
 TOP WAARRE  
 10% GAS  
 TOP EUMERALLA

TOP WAARRE 1517MKB  
 1440MSS

WAARRE FORMATION IS  
 80 M THICK

WAARRE FORMATION  
 45 M LOWER THAN  
 AT DUNBAR-1

**NOTE**

- (1) THE 'C' SAND HAS 3M OF GAS PAY  
 TOTAL GAS IS 7% IN THIS ZONE  
 RESISTIVITY IS AROUND 20 OHMS
- (2) WATER SANDS IN THE 'C' AND 'B'  
 SANDS HAVE RESISTIVITIES OF  
 AROUND 2 OHMS WHICH IS SAME AS  
 DUNBAR EAST-1.
- (3) THE 'A' SAND HAD:  
 10% TOTAL GAS  
 7 OHMS RESITIVITY

**NOTE**

- (1) AT NEARBY PORT CAMPBELL-3 THE  
 'C' SAND AND THE 'B' SANDS WERE  
 TESTED. BOTH SANDS PRODUCED WATER
- (2) THE RESISTIVITY OF THE TESTED ZONES  
 IS 3 OHMS
- (3) AT DUNBAR EAST-1 THE RESISTIVITY OF  
 SANDS 'C' AND 'B' IS AROUND 2-3 OHMS  
 THEREFORE THEY ARE LIKELY TO BE  
 WATER WET

Enclosure-2