

COMPOSITE WELL LOG

PLANET EXPLORATION COMPANY PTY LTD
CASTERTON No. 2

DEPT. NAT. RES & ENV
PE601510

PETROLEUM TENEMENT: P.E.P. 26

STATE: VICTORIA

4 MILE SHEET: HAMILTON

Basin: OTWAY

WELL STATUS: DRY and ABANDONED

LOCATION: Lat 37° 39' 5" Long 141° 13' 20"
ELEVATION: Ground 218' ASL
KB 229' ASL
Date Spudded: Oct 18, 1967
Date Drilling Stopped: Oct 30, 1967
Date Rig Released: Oct 31, 1967
Total Depth: Driller - 5008', Schlumberger - 5008'

Hole Size: Inches From To
24 Surface 22'
12 1/2 22' 858'
8 1/2 858' 5008' (T.D.)

Casing: Inches Wt Grade Depth Cmt Cmt'd to
18 36 lb J-55 853' 550 sov Surface

Cement Plugs: From To
2600' 2700'
1360' 1460'
780' 880'
0' 50'

	ELECTRIC LOG	MICROLOG - CALIPER
RUN NUMBER	30-10-67	30-10-67
Date	30-10-67	30-10-67
First Reading	5006	5006
Last Reading	854	852
Interval Measured	4197	4154
Casing Schlumberger	854	852
Casing Driller	855	853
Depth Reached	5007	5007
Bottom Driller	5008	5008
Mud Nature	Bentonite	Bentonite
Density	10.2 / 70	10.2 / 70
Mud Resistivity	2.4 @ 56°F	2.4 @ 56°F
Mud Resist BHT	0.72 @ 150°F	0.72 @ 150°F
PH/Fluid Loss	8/6 B. CC/30min	8/6 B. CC/30min
Origin of Sample	Flowline	Flowline
Rmt	1.82 @ 56°F	1.82 @ 56°F
Rmc	2.81 @ 56°F	2.81 @ 56°F
Bit Size	8 1/2" TD	8 1/2" TD
Casing Size	18"	18"
Oper. Rig Time	3 Hrs	3 Hrs
Truck No	4501	4501
Recorded by	D. Hawkins	D. Hawkins
Witness	J. Cundill	J. Cundill

LITHOLOGIC REFERENCE

- Loose quartz in cuttings
- Consolidated sandstone (Merino type)
- Siltstone
- Mudstone
- Coal
- Gneiss

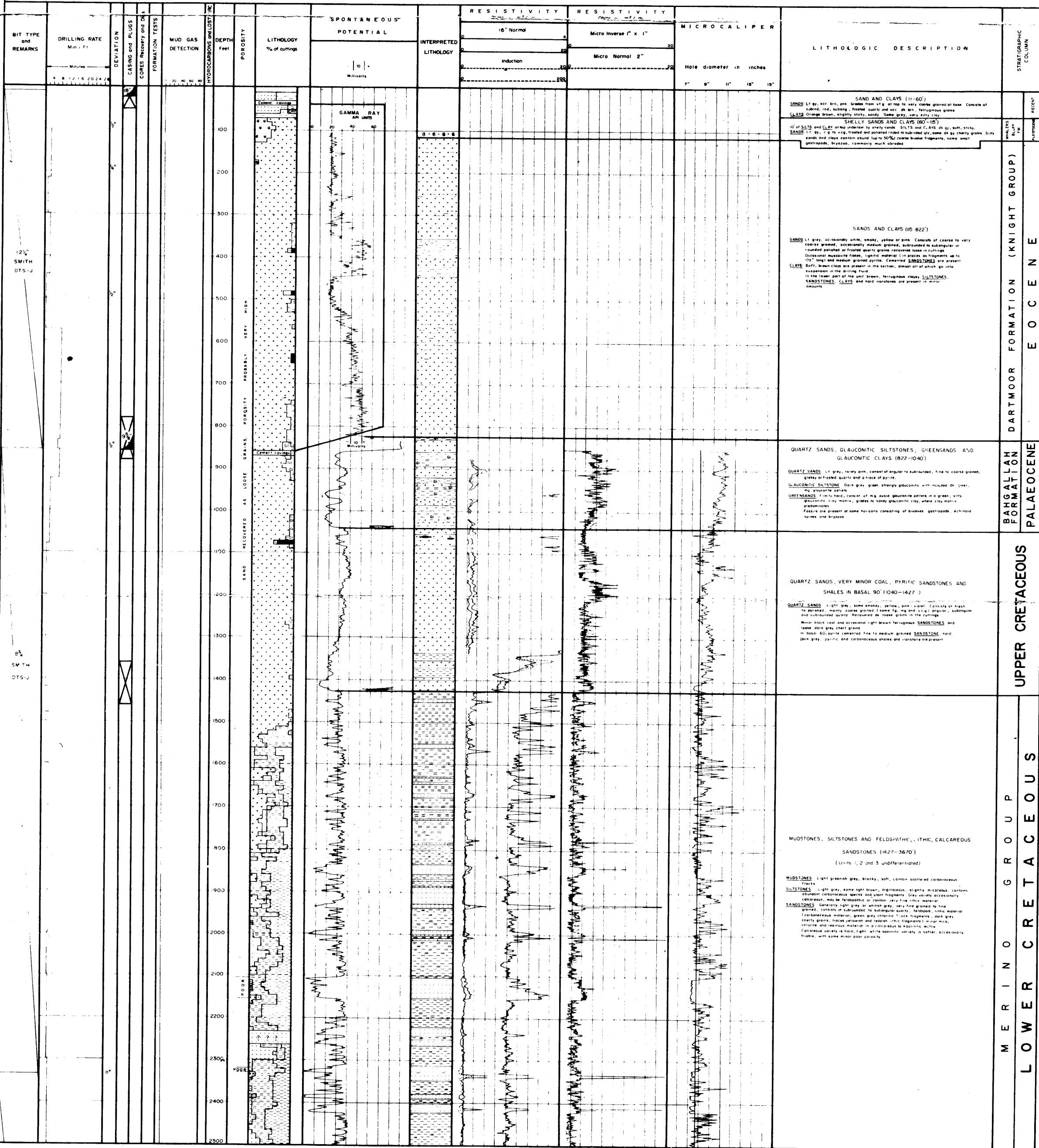
WELL SYMBOLS

- Core interval, number and recovery
- Casing shoe

FOSILLS

8

Drilled by: Drilling Contractors (Aust.) Pty Ltd
Drilling Method: Rotary
Logged by: Schlumberger
Technical Wellsite Supervision: Cundill, Meyers & Associates
Lithology by: J. Cundill, D. Nichols
Composite Log by: Cundill, Meyers & Associates
Drafting by: Geodrafting Services



12 1/2 SMITH DTS-J

8 3/4 SMITH DTS-J

STRATIGRAPHIC COLUMN
RECENT
DARTMOOR FORMATION (KNIGHT GROUP)
BAHGALLIAN FORMATION
PALAEOCENE
UPPER CRETACEOUS
MERINO GROUP
LOWER CRETACEOUS