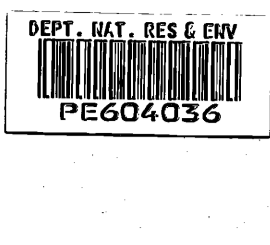




PHOENIX OIL & GAS N.L. COMPOSITE WELL LOG BALLANGIECH - 1 OTWAY BASIN, VICTORIA

1:1000
ENCLOSURE 1



Survey Data

Location: LATITUDE-38 14'15"S
LONGITUDE-142 38'30"E
SEISMIC-Station 186.Seismic Line OPX84A-17
140. OPX84A-18

Geologists: B.SELL / A.J.WILLIAMS

Report: A.J.WILLIAMS

Petroleum Tenement: PEP 101

Composite Log: W.H.STACH

Elevation: G.L.98.25m. K.B. 103.53m.

Log Coverage: DLL-MSFL-GR-SP

Total Depth: 1249.9m (Driller). 1245.7m (Logger)

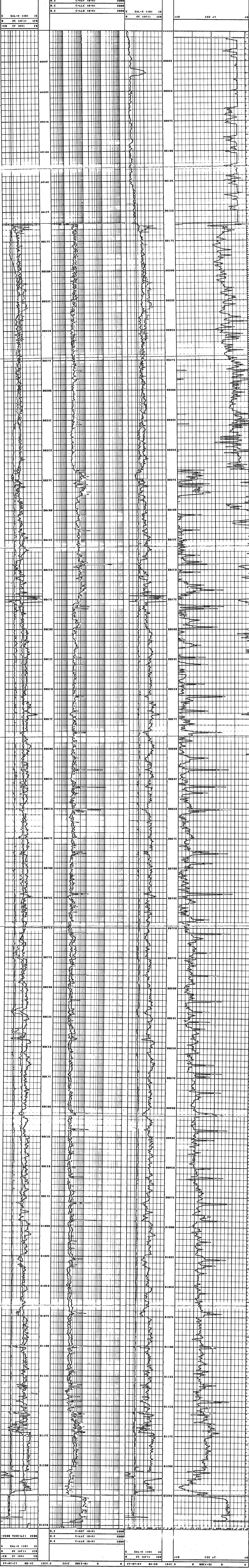
SLS-GR

Date Spudded: 0010 Hrs 19/07/87

Date Completed: 2400 Hrs 29/07/87

Well Status: PLUGGED & ABANDONED

Drafted:W.H.S. Date OCTOBER 1987



2500 TCR(L) EEO
 CAL-X (IR) IG
 CC (LFI) ICD
 EF (IRV) CB
 REF (IR) 2000
 LLE (IR) 2000
 LLD (IR) 2000
 CAL-X (IR) IG
 CC (LFI) ICD
 ECT AT