



DEPT. NAT. RES. & ENV.  
PE602659

COUNTRY	AUSTRALIA
FIELD	PPL 256 Vic
WELL	Anglesa No 1
COMPANY	OIL DEV. N.L.

COMPANY	OIL DEVELOPMENT N.L.
WELL	Anglesa No 1
FIELD	P P 1 256 Vic.
COUNTRY	AUSTRALIA
STATE	Victoria

Location:

Other Services: RS

Ref. No.:

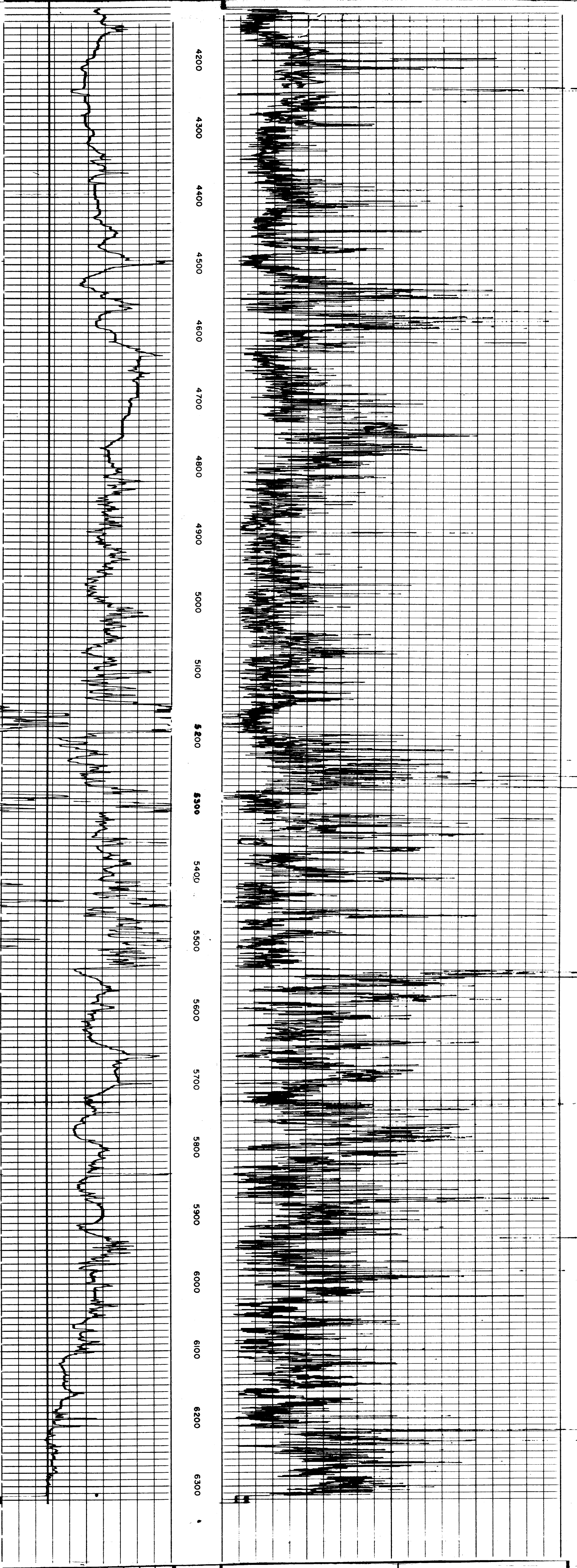
Permanent datum	K.B.	Elev.:	78°
Log Measured From	I.B.	Ft. Above Perm. Datum	D.F. 75.6°
Drilling Measured From	K.B.	Ft. Above Perm. Datum	G.L. 65°
RUN No.   Depth Scale	3   1" / 100"		
Date	July 20th 1962		
First Reading	6.313°		
Last Reading	4.150°		
Interval Measured	2.163°		
Casing Schlumberger	2.298°		
Casing Driller	6.314°		
Depth Reached	6.313°		
Bottom Driller	Bentallite		
Mud Nature	10.8   52		
Density   Viscosity	5.0 @ 58		
Mud Resistivity	1.5 @ 152		
pH   Fluid Loss	9   7.6 CC/30 min.		
Origin of Sample	circulation		
Rmf	4.24 @ 55		
Rmc	- @ -		
Bit Size	8 7/16   6.311°		
Casing Size	9 5/8		
Op. Rig Time	2 hrs 1/2		
Truck No.	2929		
Recorded By	J. Oulgoes		
Witness	J. Gollan		

FOLD HERE

REMARKS :

RUN No	3	EQUIPMENT Type and No.	
Origin of filtrate	Circulation-Labe	Panel	MCP-0 20
From mud log	Rm = 1.5 at 6.300°	Sonde	PMS-B 127
IPod	Hyd. type 1		

MICROCALIPER	DEPTHS	RESISTIVITY — ohms - m <sup>2</sup> /m	
Hole Diameter in Inches	16"	0	40
		0	40



MICROCALIPER	DEPTHS	RESISTIVITY — ohms - m <sup>2</sup> /m	
Hole Diameter in Inches	16"	0	40
		0	40

COMPANY	OIL DEVELOPMENT N.L.	Rm	5.0 @ 58 °F	SCHL. F.R.	6.313°
WELL	Anglesa No 1	Rmf	4.24 @ 65 °F	SCHL. T.D.	6.314°
FIELD	PPL 256 Vic	Rmc	- @ - °F	DRLR. T.D.	6.311°
COUNTRY	AUSTRALIA		BHT 152 °F	Elev.:	K.B. 78°
					D.F. 75.6°
					G.L. 65°

MUD LOG = Sonde closed

MICROCALIPER	DEPTHS	RESISTIVITY ohms - m <sup>2</sup> /m	
	1" / 100"	0	10