

GEOGRAM*

(Synthetic Seismogram)

A Mark of Schlumberger

Company: CRUSADER RESOURCES N.L.
 Well: WONGA BINDA #1
 Field: WILDCAT
 Country: AUSTRALIA
 Reference No: 569160
 Date Logged: 18 APR 88
 Location: 038 27 02.36" S
 Elevations: KB: 29.50 DF: 29.00 GL: 25.70
 Permanent Datum: MSL
 Depth Units: METRES

LOG INFORMATION

FIELD RECORDING: Figurehead P. KITSON Location: Program Version: 30.4
 COMPUTATION: Analyst: M. SANDERS Centre: STJ Baseline: 18/07/81
 Logging Datum: 29.50
 Seismic Reference Datum: 0.00
 Sonic Calibration By: Check Shots: YES
 Sonic Edited By: Analyst: YES
 Two-Way Time Sample Interval: 2 ms Environment: onshore

True Vertical Depth Corrections Applied
 Source of True Vertical Depth Data:
 Maximum Hole Deviation:

Run	Date	Tool Type	RI Size/Depth	Casing Size/Depth	Top Depth	Bottom Depth
1	18 APR 88	BHC	8 7/8" @ 394 M	9 5/8" @ 173 M	173 M	1070 M
1	18 APR 88	31 M	3 M	1.0 M @ 0.0	15 M @ 0.0	

GEOGRAM MODEL ASSUMPTIONS

Equal time slice model of horizontal plane layers.
 Plane acoustic waves at normal incidence.
 No intrinsic attenuation.

POLARITY
 An upgoing wave, reflected by an increase in acoustic impedance with depth, is displayed as a white trough under normal polarity.

SCANNATURES
 All signatures displayed in the Geogram results correspond to a wavelet convolved with a reflection coefficient of -0.5 (A decrease in acoustic impedance with depth).

REMARKS

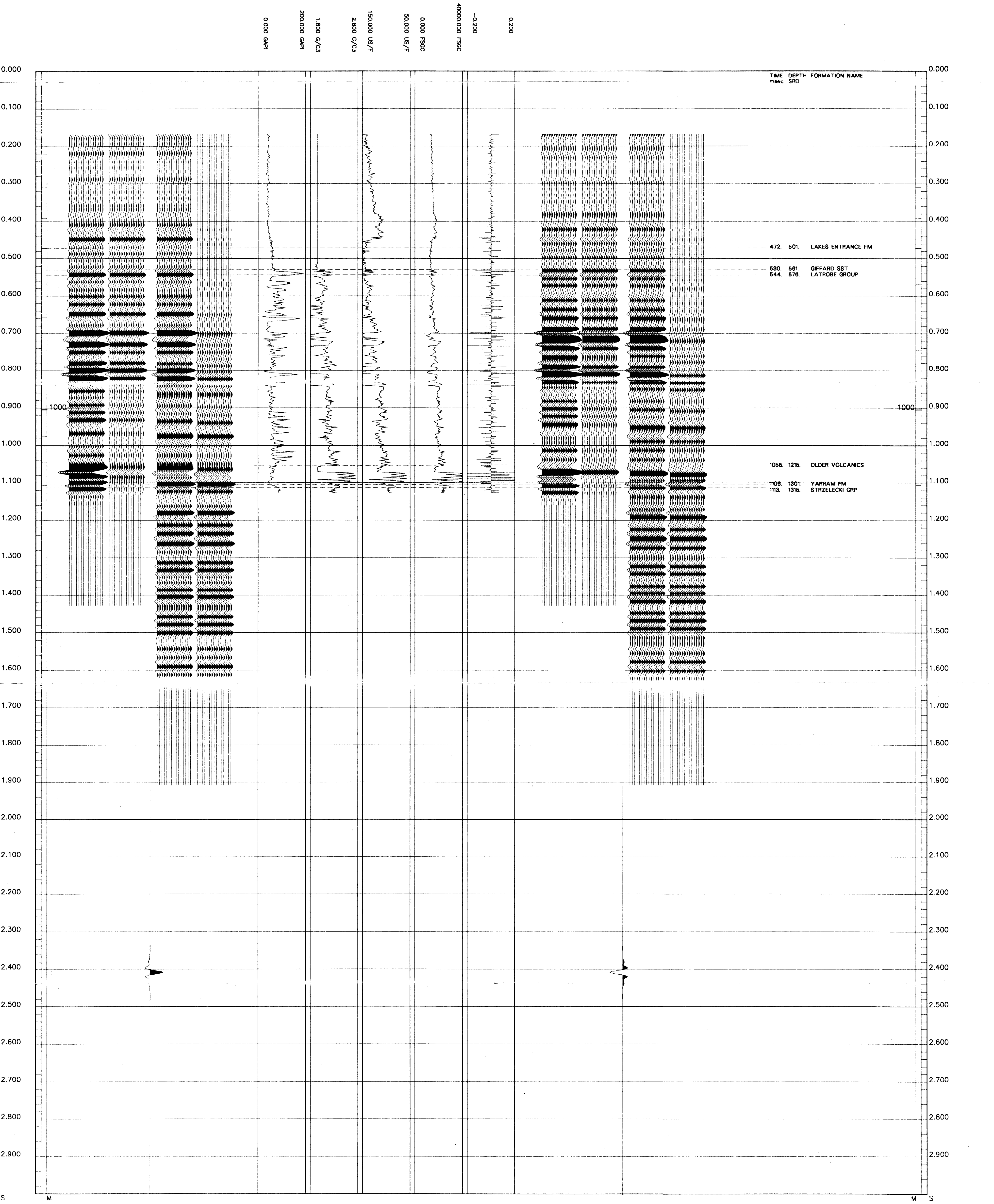
10-60 HERTZ

The well name, location and borehole reference data were furnished by the customer.

All interpretations are opinions based on inferences from electrical or other measurements and we cannot, and do not guarantee the accuracy or correctness of any interpretations, and we shall not, except in the case of gross or willful negligence on our part, be liable or responsible for any loss, costs, damages or expenses incurred or sustained by anyone resulting from any interpretations made by any of our officers, agents or employees. These interpretations are also subject to Clause 4 of our General Terms and Conditions as set out in our current Price Schedule.

** GEOGRAM **
 10-60 HERTZ ZERO PHASE BUTTERWORTH WAVELET
 WONGA BINDA - 1

MULTIPLES ONLY REVERSE POLARITY
PRIMARIES AND MULTIPLES REVERSE POLARITY
PRIMARIES WITH TRANSMISSION LOSS REVERSE POLARITY
PRIMARIES REVERSE POLARITY
REFLECTION
ACOUSTIC IMPEDANCE
SONIC
DENSITY
GAMMA RAY
MULTIPLES ONLY NORMAL POLARITY
PRIMARIES AND MULTIPLES NORMAL POLARITY
PRIMARIES WITH TRANSMISSION LOSS NORMAL POLARITY
PRIMARIES NORMAL POLARITY



COMPANY CRUSADER RESOURCES N.L.
 FIELD WILDCAT
 WELL WONGA BINDA #1
 COUNTRY AUSTRALIA

