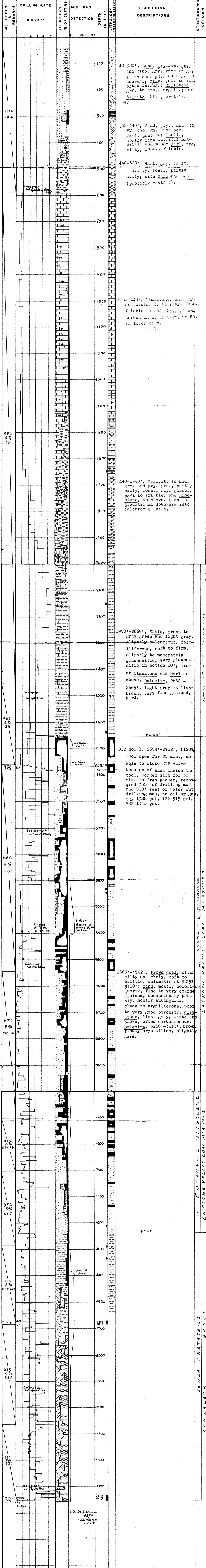
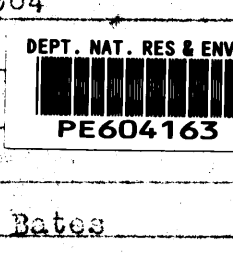


ARCO LTD

WELL NAME BEASPRAY NO. 1 SPUNDED January 20, 1964
 LOCATION Lat. 38° 19' 39" S COMPLETED
 Long. 147° 9' 43" E STATUS
 ELEVATION GL 971 - RKB 108' RIG National 50
 TOTAL DEPTH _____ CONTRACTOR Reading and Bates
 CASING 9 5/8" set at 578' GEOLOGIST Ingram and Fleet



STRATIGRAPHIC COLUMN

U. EOCENE - L. OLIGOCENE
 LATROBE VALLEY COAL MEASURES

U. EOCENE - L. OLIGOCENE
 LATROBE VALLEY COAL MEASURES

LOWER CRETACEOUS
 STRZELCKI GROUP