

COMPENSATED SONIC  
1:500

COMPANY LAKES OIL N.L. WELL PETRO-TECH # 1 FIELD APPRAISAL PROVINCE/COUNTY VICTORIA COUNTRY/STATE AUSTRALIA PERMIT NUMBER PEP 135	LOCATION CIPPSLAND BASIN STRVNC/CO. VICTORIA APPRAISAL PETRO-TECH # 1 COMPANY: LAKES OIL N.L. LOCATION CIPPSLAND BASIN STRVNC/CO. VICTORIA APPRAISAL PETRO-TECH # 1 COMPANY: LAKES OIL N.L.	ELEVATION 0.0 M ABOVE PERMANENT DATUM DRILLING MEASURED FROM KB OF 44.0 M
DATE 07-MAR-97 RUN NUMBER 01	SIZE 340 MM WEIGHT 48 LB/FT FROM 59.67 M TO SURFACE	OTHER SERVICES DLS CSS PNS CFS

BOREHOLE RECORD		CASING RECORD	
RUN NUMBER	BIT FROM TO	SIZE	WEIGHT FROM TO
ONE	156 MM 431.4 M 59.67 M	340 MM	48 LB/FT 59.67 M SURFACE

EQUIPMENT	RUN 1	RUN 2	RUN 3	RUN 4
DLS	13.27.00			
PNS		99		
CSS			013.021	
CFS				017

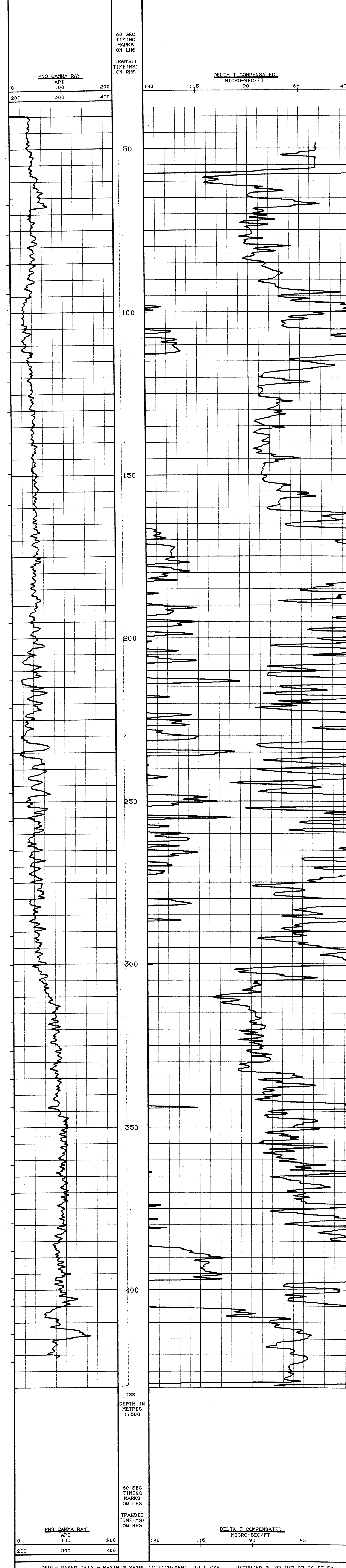
REMARKS  
 SNIC RUN WITH 0.5" STANDOFFS  
 RIC: HENRY BROS. BOURNE 2000R

SYSTEM CONFIGURATION DATES: LOGGED 02.SEP.96 PROCESSED PLOTTED 02.SEP.96

ALL INTERPRETATIONS ARE OPINIONS BASED ON INFERENCE FROM ELECTRICAL OR OTHER MEASUREMENTS AND WE CANNOT AND DO NOT GUARANTEE THE ACCURACY OR CORRECTNESS OF ANY INTERPRETATIONS AND WE SHALL NOT BE LIABLE OR RESPONSIBLE FOR ANY LOSS, COSTS, DAMAGES OR EXPENSES INCURRED OR SUSTAINED BY ANYONE RESULTING FROM ANY INTERPRETATION MADE BY ANY OF OUR OFFICERS, AGENTS OR EMPLOYEES. THESE INTERPRETATIONS ARE ALSO SUBJECT TO OUR GENERAL TERMS AND CONDITIONS AS SET OUT IN OUR CURRENT PRICE SCHEDULE.

MAIN LOG

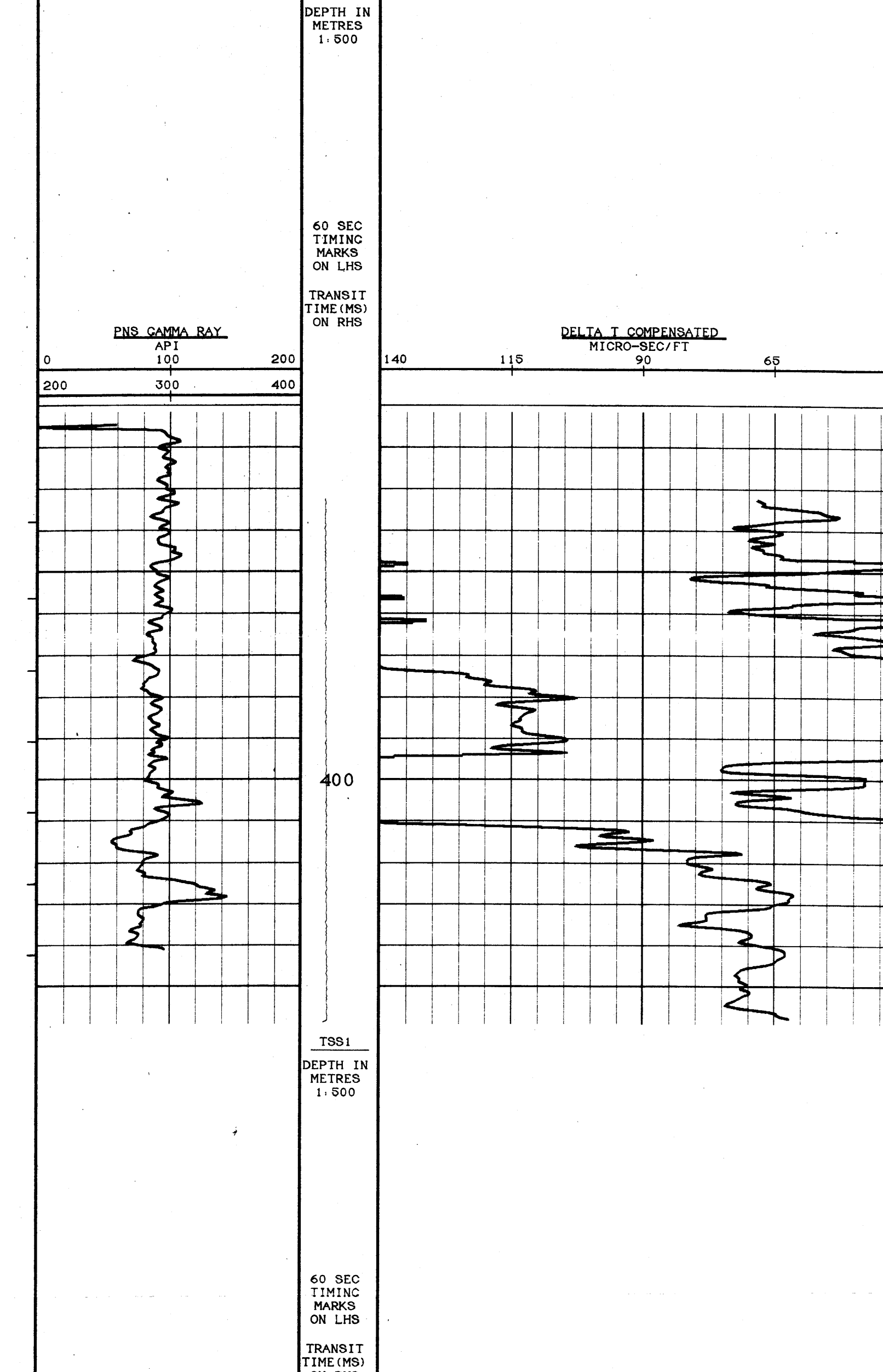
DEPTH BASED DATA - MAXIMUM SAMPLING INCREMENT 10.0 CMS. . RECORDED @ 07-MAR-97 09.42.55  
 PLOTTED ON 07-MAR-97. FILE # 5. TAPE ID. PT1



DEPTH BASED DATA - MAXIMUM SAMPLING INCREMENT 10.0 CMS. . RECORDED @ 07-MAR-97 08.57.58  
 PLOTTED ON 07-MAR-97. FILE # 5. TAPE ID. PT1

REPEAT SECTION

DEPTH BASED DATA - MAXIMUM SAMPLING INCREMENT 10.0 CMS. . RECORDED @ 07-MAR-97 09.42.55  
 PLOTTED ON 07-MAR-97. FILE # 4. TAPE ID. PT1



DEPTH BASED DATA - MAXIMUM SAMPLING INCREMENT 10.0 CMS. . RECORDED @ 07-MAR-97 08.43.42  
 PLOTTED ON 07-MAR-97. FILE # 4. TAPE ID. PT1

REPEAT SECTION

COMPANY	LAKES OIL N.L.
WELL	PETRO-TECH # 1
FIELD	APPRAISAL
PROVINCE/COUNTY	VICTORIA
COUNTRY/STATE	AUSTRALIA