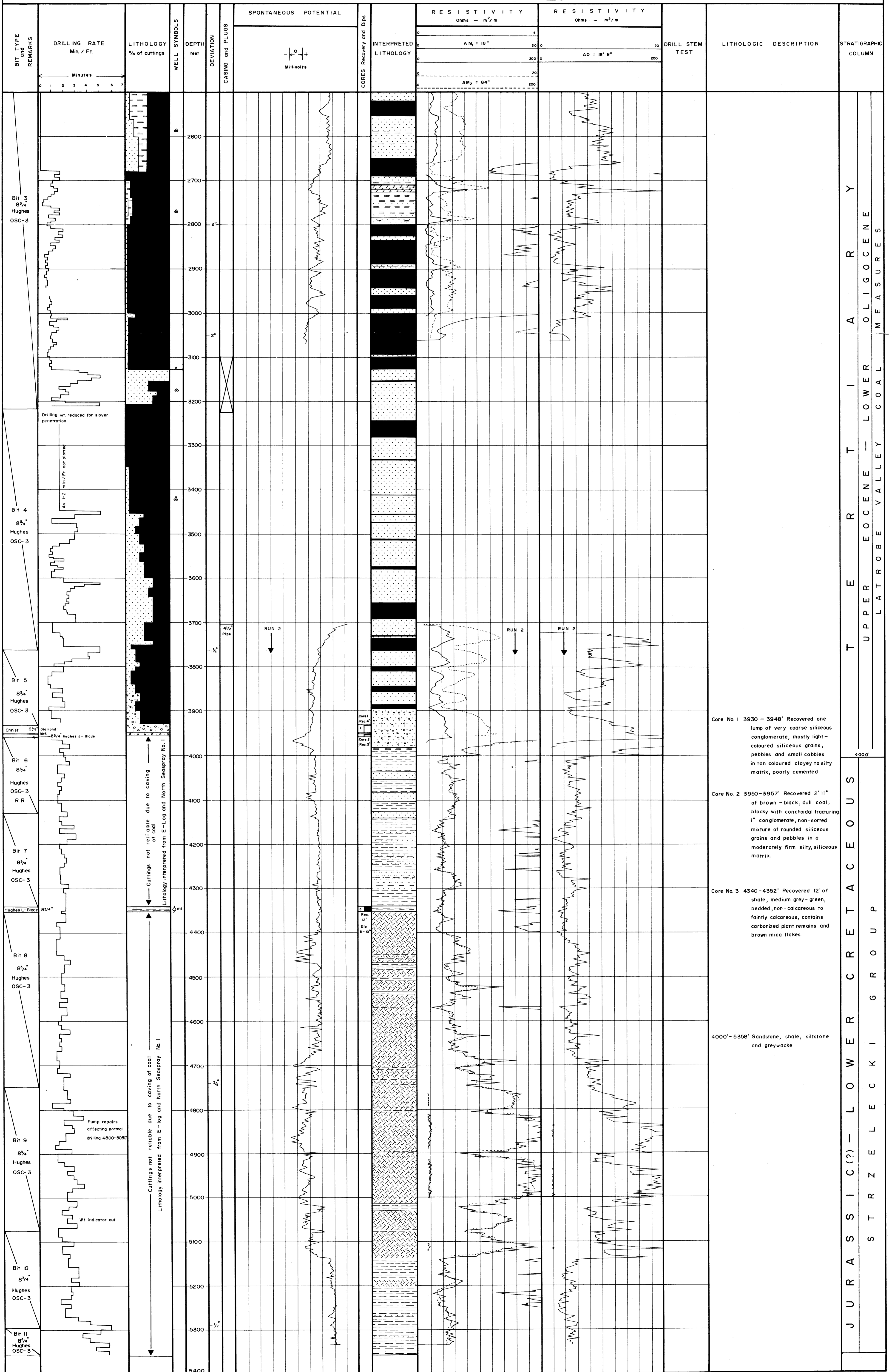


# COMPOSITE WELL LOG NORTH SEASPRAY No.2

2500' - 5358'  
Sheet 2 of 2



Core No. 1 3930-3948' Recovered one lump of very coarse siliceous conglomerate, mostly light-coloured siliceous grains, pebbles and small cobbles in tan coloured clayey to silty matrix, poorly cemented.

Core No. 2 3950-3957' Recovered 2' 11" of brown-black, dull coal, blocky with conchoidal fracturing 1" conglomerate, non-sorted mixture of rounded siliceous grains and pebbles in a moderately firm silty, siliceous matrix.

Core No. 3 4340-4352' Recovered 12' of shale, medium grey-green, bedded, non-calcareous to faintly calcareous, contains carbonized plant remains and brown mica flakes.

4000'-5358' Sandstone, shale, siltstone and greywacke

JURASSIC(?) - LOWER STRZELCKI GROUP  
CRETACEOUS  
UPPER EOCENE - LOWER COAL VALLEY MEASURES