

# COMPOSITE WELL LOG ASHBURTON OIL N.L. MILTON No. 1



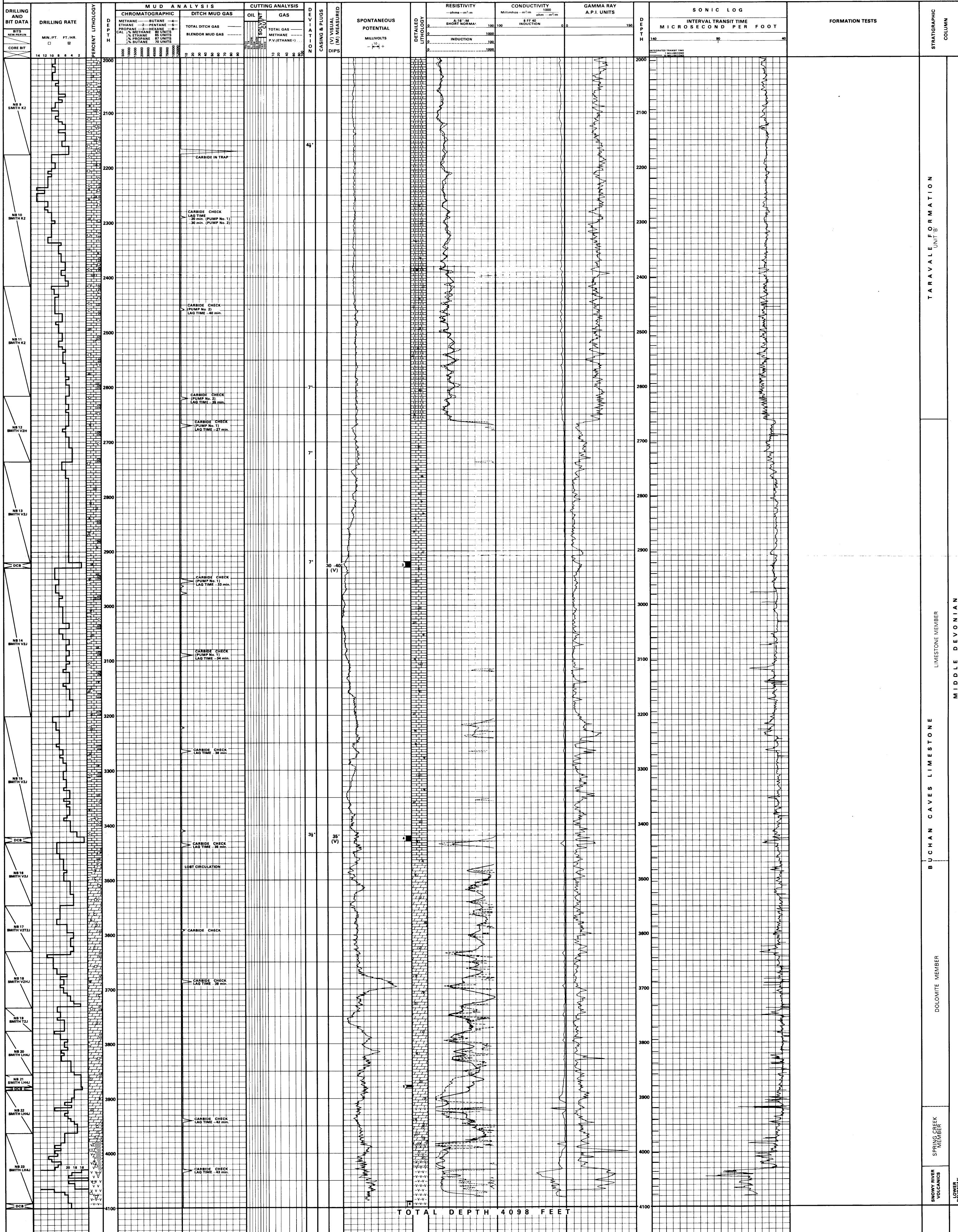
LOCATION: LAT. 37° 31' 31" S. LONG. 148° 10' 31" E.

STATE: VICTORIA

4 MILE SHEET: BAIRDSDALE

Basin: BUCHAN

WELL STATUS: PLUGGED AND ABANDONED JAN. 13, 1970



TARAVALLE FORMATION

LIMESTONE MEMBER

BUCHAN CAVES LIMESTONE

DOLOMITE MEMBER

SPRING CREEK MEMBER

LOWER DEVONIAN

MIDDLE DEVONIAN