

INVESTIGATOR - 1

COMPOSITE WELL LOG

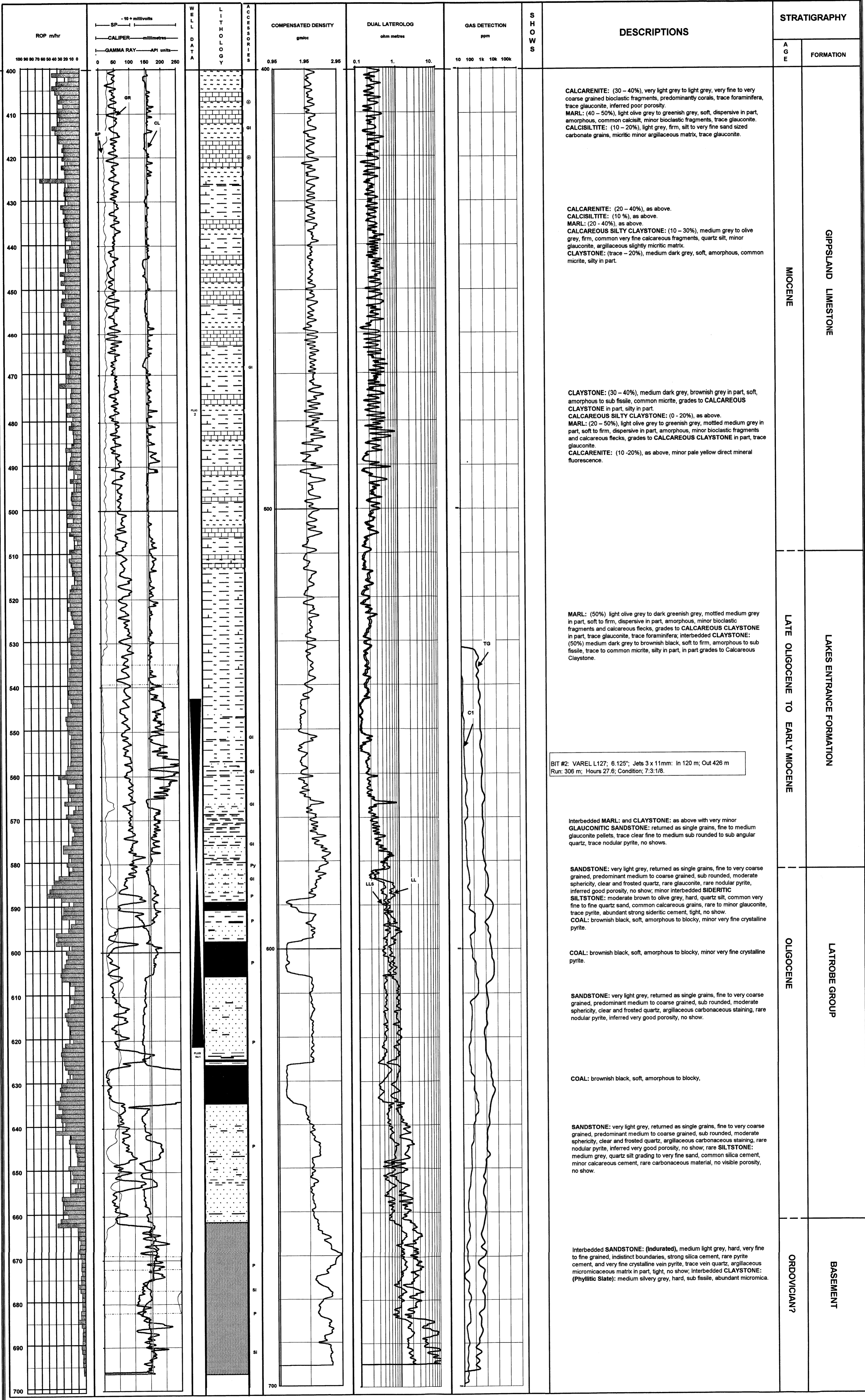
PERMIT: PEP 136
BASIN: Onshore Gippsland Basin
LOCATION: 147° 36' 46" E
37° 54' 50" S

ELEVATION: G.L. 33 metres
K.B. 34 metres
DRILLING CONTRACTOR: Sides Engineering Pty Ltd
RIG: Bourne 2000 THD

SPUDDED: 02:30 hours, 6 October 1999
TOTAL DEPTH: 697 metres, reached at 10:00 hours 9 October 1999
STATUS: Plugged and Abandoned Exploration Well
RIG RELEASED: 17:00 hours, 10 October 1999

SANDSTONE	LIMESTONE	COAL	INTRUSIVE	Conglomeratic	Py Pyrite	Casing Shoe
SILTSTONE	DOLOMITE	CONGLOMERATE	VOLCANIC	Sandy	Gl Glaucouite	Cement Plug
CLAYSTONE	MARL	BRECCIA	METAMORPHIC	Silty	Si Siliceous	
				Argillaceous	Fe Ferruginous	
				Calcareous	Li Lithic	
				Dolomitic		
				Carbonaceous		
					* Plant Remains	
					⊕ Microfossils	
					⊙ Macrofossils	

SHEET 2
400 - 697 metres



BIT #: VAREL L127; 6.125"; Jets 3 x 11mm; In 120 m; Out 426 m
Run: 306 m; Hours 27.6; Condition: 7.3/1.8

Interbedded MARL: and CLAYSTONE: as above with very minor
GLAUCONITIC SANDSTONE: returned as single grains, fine to medium
glaucouite pellets, trace clear fine to medium sub rounded to sub angular
quartz, trace nodular pyrite, no shows.

SANDSTONE: very light grey, returned as single grains, fine to very coarse
grained, predominant medium to coarse grained, sub rounded, moderate
sphericity, clear and frosted quartz, rare glauconite, rare nodular pyrite,
inferred good porosity, no show; minor interbedded SIDERTIC
SILTSTONE: moderate brown to olive grey, hard, quartz silt, common very
fine to fine quartz sand, common calcareous grains, rare to minor glauconite,
trace pyrite, abundant strong sideritic cement, tight, no show.
COAL: brownish black, soft, amorphous to blocky, minor very fine crystalline
pyrite.

COAL: brownish black, soft, amorphous to blocky, minor very fine crystalline
pyrite.

SANDSTONE: very light grey, returned as single grains, fine to very coarse
grained, predominant medium to coarse grained, sub rounded, moderate
sphericity, clear and frosted quartz, argillaceous carbonaceous staining, rare
nodular pyrite, inferred very good porosity, no show, rare SILTSTONE:
medium grey, quartz silt grading to very fine sand, common silica cement,
minor calcareous cement, rare carbonaceous material, no visible porosity,
no show.

COAL: brownish black, soft, amorphous to blocky.

SANDSTONE: very light grey, returned as single grains, fine to very coarse
grained, predominant medium to coarse grained, sub rounded, moderate
sphericity, clear and frosted quartz, argillaceous carbonaceous staining, rare
nodular pyrite, inferred very good porosity, no show, rare SILTSTONE:
medium grey, quartz silt grading to very fine sand, common silica cement,
minor calcareous cement, rare carbonaceous material, no visible porosity,
no show.

Interbedded SANDSTONE: (Indurated), medium light grey, hard, very fine
to fine grained, indistinct boundaries, strong silica cement, rare pyrite
cement, and very fine crystalline vein pyrite, trace vein quartz, argillaceous
micromicaceous matrix in part, tight, no show; Interbedded CLAYSTONE:
(Phyllitic Slate): medium silvery grey, hard, sub fissile, abundant micromica.