



GEOGRAM*

(Synthetic Seismogram)

Company: HARTOGEN ENERGY LIMITED
 Well: BURONG - 1
 Field: WILDCAT
 Country: AUSTRALIA
 Reference No: 540439
 Date Logged: 08/11/95
 Location: 038 18' 38.84" S 147 11' 51.68" E
 Elevations: KB: 1290 FT DF: 1280 FT GL: 1650 FT
 Permanent Datum: MSL
 Depth Units: FEET

LOG INFORMATION
 FIELD RECORDING: Engineer: A. JAMES Location: OSA Program Version: 282
 COMPUTATION: Analyst: R. BURR Centre: ASJ Baseline: 14.1
 LOGGING DATUM: ELEVATION ABOVE MEAN SEA LEVEL
 Seismic Reference Datum: 129 FT
 Ground Level: 115 FT
 Sonic Calibration by Check Shots: YES Sonic Edited by Analyst: YES
 Two-Way Time Sample Interval: 2 ms Environment: onshore

True Vertical Depth Corrections Applied: NO
 Source of True Vertical Depth Data: Maximum Hole Deviation:

Run	Date	Tool Type	Bit Size/Depth	Casing Size/Depth	Top Depth	Bottom Depth
1	07/11/88	BHC	7 7/8" @ 430 FT	8 5/8" @ 76 FT	0715 FT	4327 FT
1	07/11/88	LCL	7 7/8" @ 430 FT	8 5/8" @ 76 FT	800 FT	4300.6 FT

Equal time slice model of horizontal plane layers.
 Plane acoustic waves at normal incidence.
 No intrinsic attenuation.

POLARITY
 An upgoing wave, reflected by an increase in acoustic impedance with depth, is displayed as a white trough under normal polarity.

SIGNATURES
 All signatures displayed in the Geogram results correspond to a wavelet convolved with a reflection coefficient of -0.5 (A decrease in acoustic impedance with depth).

EXAMPLE 2
 Sonic log interval 762 - 4130 feet below KB
 Density log interval 1588 - 4130 feet below KB
 Time Scale = 15 cm/sec

The well name, location and borehole reference data were furnished by the customer.

All interpretations are opinions based on inferences from electrical or other measurements and we cannot, and do not guarantee the accuracy or correctness of any interpretation, and we shall not, except in the case of gross or willful negligence on our part, be liable or responsible for any loss, costs, damages or expenses incurred or sustained by anyone resulting from any interpretations made by any of our officers, agents or employees. These interpretations are also subject to Clause 4 of our General Terms and Conditions as set out in our current Price Schedule.

CLIENT : HARTOGEN ENERGY LIMITED
 FIELD : WILDCAT
 WELL : BURONG - 1

SPRM.GEO.001* SREF.GEO.001* SMUL.GEO.001* SMUD.GEO.001* GRW RHOT* DTN.GPF.001* REFL.GPF.001* SPRM.GEO.001* SREF.GEO.001* SMUL.GEO.001* SMUD.GEO.001*

GEOGRAM AFTER SONIC CALIBRATION KLAUDER WAVELETS 15-70 HZ

BURONG - 1

MULTIPLES ONLY
 REVERSE POLARITY

PRIMARIES AND MULTIPLES
 REVERSE POLARITY

PRIMARIES CORRECTED FOR
 TRANSMISSION LOSS
 REVERSE POLARITY

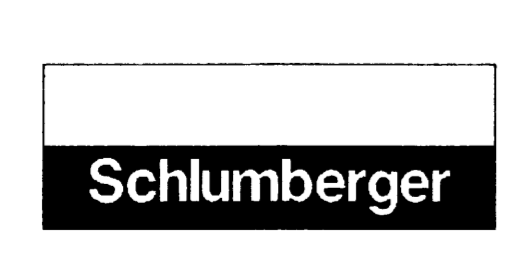
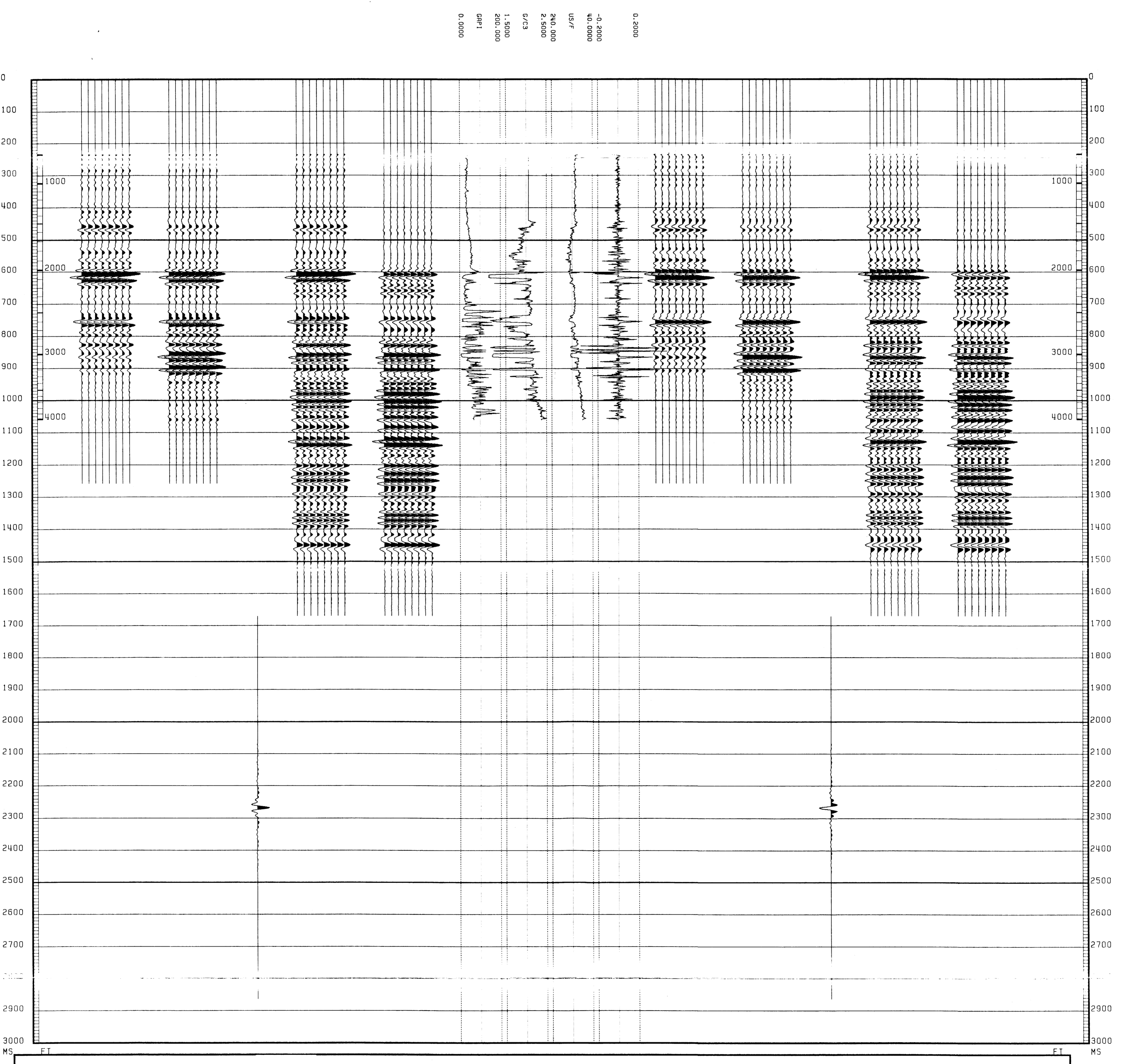
MULTIPLES ONLY
 NORMAL POLARITY

PRIMARIES AND MULTIPLES
 NORMAL POLARITY

MULTIPLES ONLY
 NORMAL POLARITY

PRIMARIES CORRECTED FOR
 TRANSMISSION LOSS
 NORMAL POLARITY

PRIMARIES
 NO VCL POLARITY



COMPANY HARTOGEN ENERGY LIMITED
 FIELD WILDCAT
 WELL BURONG - 1
 COUNTRY AUSTRALIA