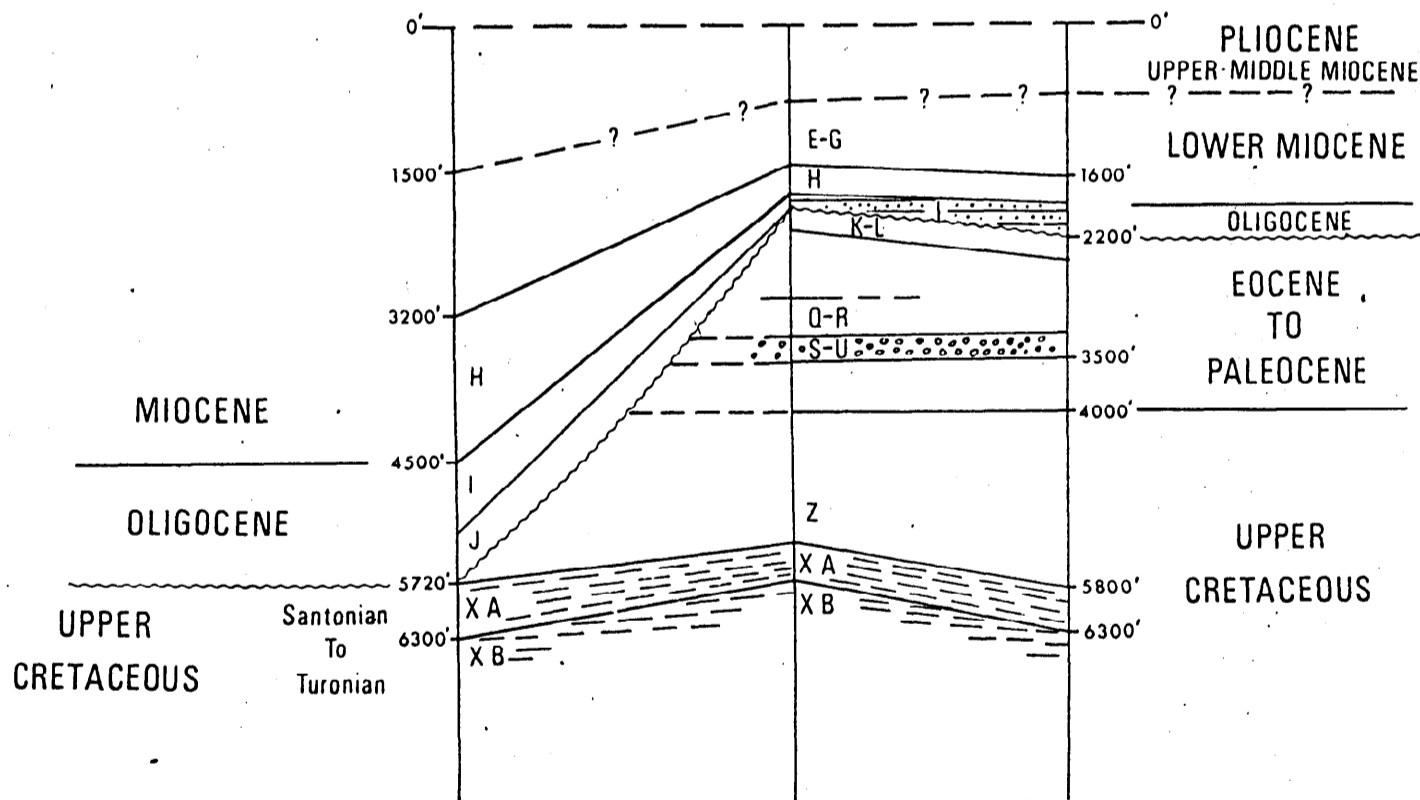


A—Time-Relative to Thickness
Datum-Base of Oligocene

Clifton Unconformity

Nautilus Unconformity



B—Biostratigraphical Cross Section

MARKER UNITS

- Clifton Formation
- Pebble Point Formation
- Belfast Mudstone

Cross Sections Flaxmans to Pecten to Nautilus