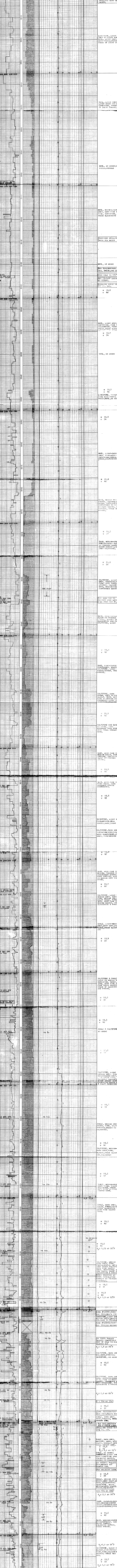


FIGURE 3

|   |  |   |
|---|--|---|
| <b>REMARKS</b><br>DRILLING CONTRACTOR: OCEANO<br>DATE: AUG. 15, 1959<br>WELL NO.: 20<br>HOLE SIZE: 13-3/8" at 2200'<br>12" at 8038' | <b>ABBREVIATIONS</b><br>NO. NEW BIT<br>NO. REAMER BIT<br>NO. CORE BIT<br>NO. HOISTING<br>NO. LOGGING<br>NO. CONNECTION GAS<br>NO. CONNECTION GAS<br>NO. CONNECTION GAS<br>NO. CONNECTION GAS | <b>COMPANY</b> ESSO-BP<br><b>WELL</b> MUSSEL<br><b>FIELD</b> OTRAV BASIN<br><b>LOCATION</b> OFFSHORE<br>COUNTY, STATE VICTORIA, AUSTRALIA<br><b>API WELL INDEX NO.</b><br><b>ELEVATION</b> SEA LEVEL: 4.8, 99 FT<br><b>DATE</b> FROM AUG. 20, 1959 TO SEP. 12, 1959<br><b>DEPTH</b> FROM 920 FT TO 8038 FT<br><b>UNIT NO.</b> 25<br><b>LOGGING GEOLOGISTS</b> CHAZZ REARE |
|---|--|---|

BASED ON USE OF APPROVED METHODS AND PROCEDURES OF THE OIL INDUSTRY.



BASED ON USE OF APPROVED METHODS AND PROCEDURES OF THE OIL INDUSTRY.

LOGGING GEOLOGISTS CHAZZ REARE