

# VERTICAL SEISMIC PROFILE

## ZERO OFFSET VSP PLOT 1 STACKED DATA

Company: BHP PETROLEUM  
 Well: MINERVA -2A  
 Field: WILDCAT  
 Country: AUSTRALIA

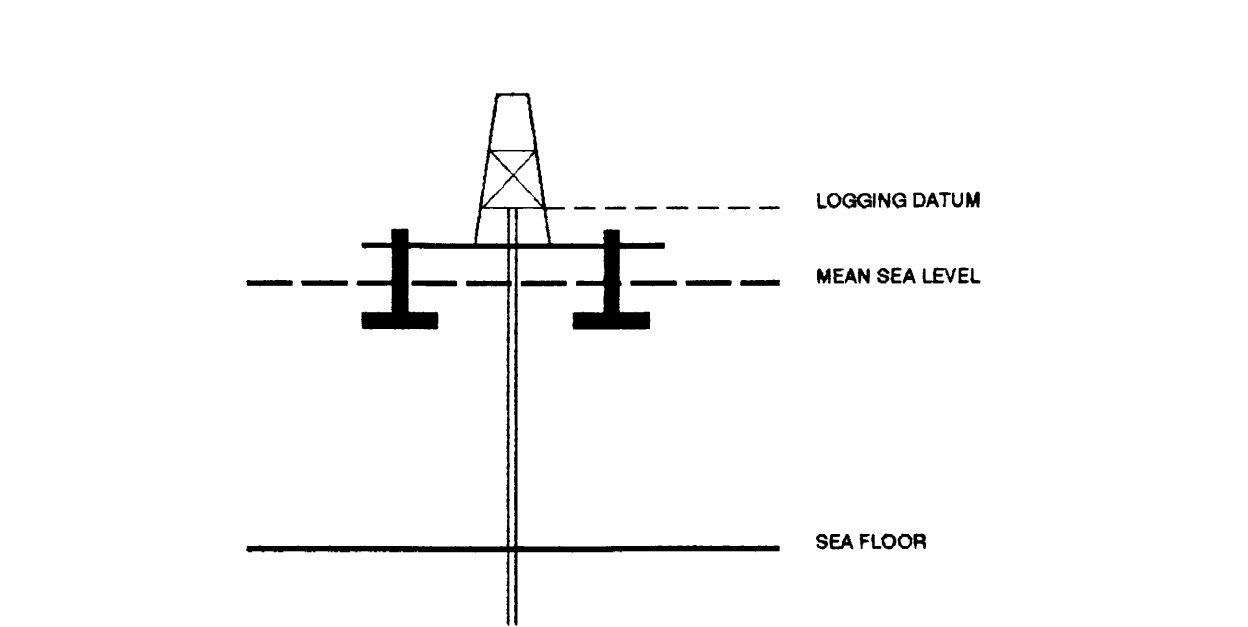
Reference No: 560960 Interval: 2160.00 to 600.00  
 Date Logged: 14-OCT-1993 Date Processed: 23/10/93  
 Location: 142 57' 20.80" N 38 43' 04.54" E  
 Elevations: KB: 25.30 DF: 25.00 GL: -85.00

Permanent Datum: MSL Depth Units: METRES

FIELD RECORDING: Engineer: M HELWIG Location: Program Version: 32.2  
 COMPUTATION: Analyst: Z.KATELIS Centre: SVJ Baseline: 20.4

ELEVATION ABOVE MEAN SEA LEVEL

Logging Datum: 25.00  
 Seismic Reference Datum: 0.00



Total Number of Levels: 57  
 Depth Reference: SRD  
 Time Reference: SRD

Run	Date	Tool Type	Bit Size/Depth	Casing Size/Depth	Top Depth	Bottom Depth
VSP	Date	Gun Offset	Hydro Offset	Gun Elevation	Hydro Elevation	Gun Azimuth
1	14-10-93	47 M	47 M	5 BELOW MSL	12 BELOW MSL	90 0

REMARKS

The well name, location and borehole reference data were furnished by the customer. All interpretations are opinions based on references from electrical or other measurements and we warrant, and do not guarantee the accuracy or correctness of any interpretations, and we shall not, except in the case of gross or willful negligence on our part, be liable or responsible for any loss, costs, damages or expenses incurred or sustained by anyone resulting from any interpretations made by any of our officers, agents or employees. These interpretations are also subject to Clause 4 of our General Terms and Conditions as set out in our current Photo Schedule.

**\*\* MEDIAN STACK \*\***

M#EDIAN COHERENCY STACK OF THE #DOWNHOLE VERTICAL COMPONENT.

PROCESSING SEQUENCE:  
 MEDIAN COHERENCY STACK APPLIED

VERTICAL SCALE : 10 CM/SEC  
 POLARITY (S.E.G.) : REVERSE

T#IMES REFERENCED TO HYDROPHONE

**\*\* MEDIAN STACK \*\***

M#EDIAN COHERENCY STACK OF THE #DOWNHOLE 2. HORIZONTAL COMPONENT

PROCESSING SEQUENCE:  
 MEDIAN COHERENCY STACK APPLIED

VERTICAL SCALE : 10 CM/SEC  
 POLARITY (S.E.G.) : REVERSE

T#IMES REFERENCED TO HYDROPHONE

**\*\* MEDIAN STACK \*\***

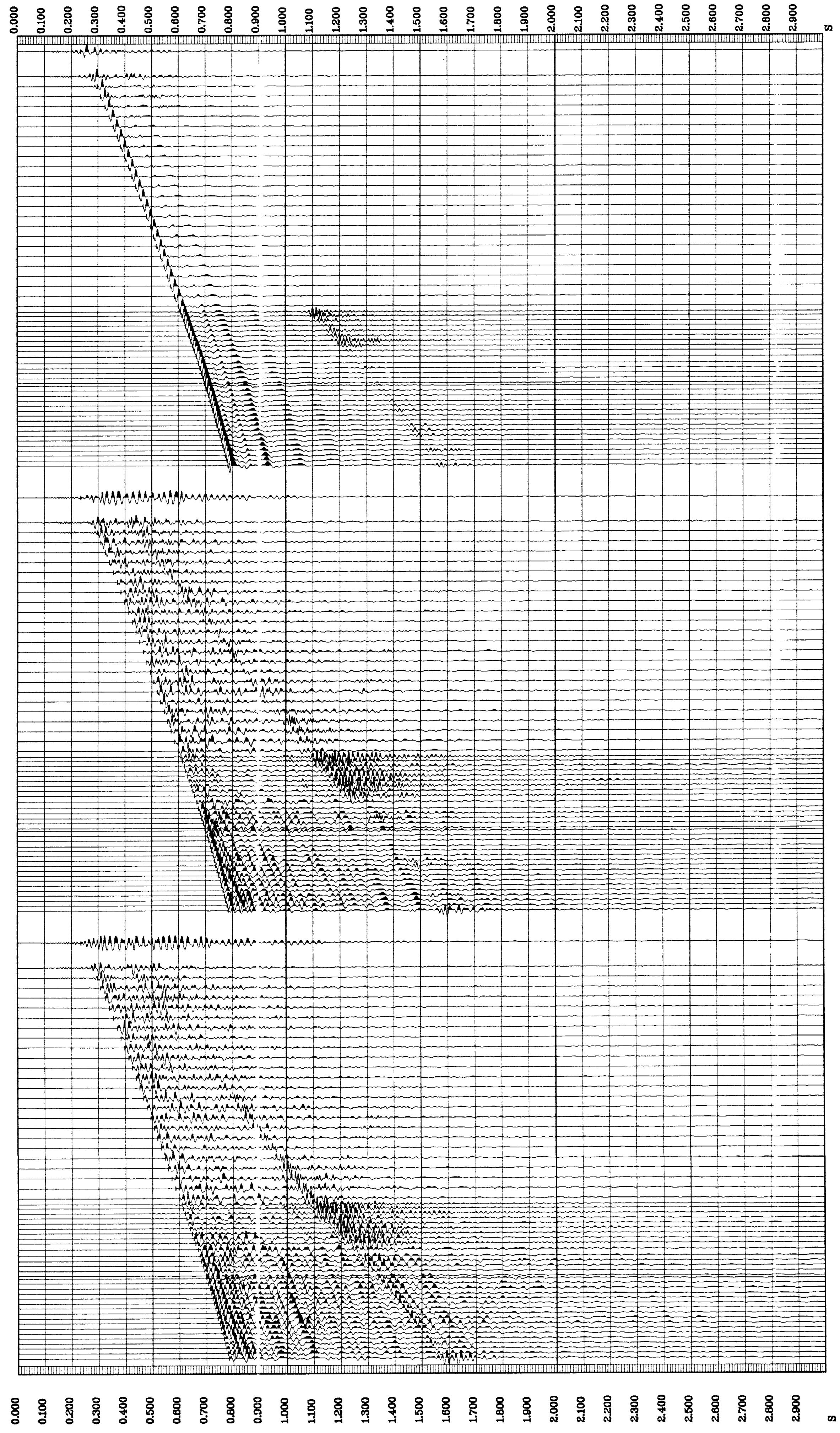
M#EDIAN COHERENCY STACK OF THE #DOWNHOLE 1. HORIZONTAL COMPONENT

PROCESSING SEQUENCE:  
 MEDIAN COHERENCY STACK APPLIED

VERTICAL SCALE : 10 CM/SEC  
 POLARITY (S.E.G.) : REVERSE

T#IMES REFERENCED TO HYDROPHONE

RAW DEPTH M	TRUE VERTICAL DEPTH MSL M	TRANSIT TIME S	LEVEL NO	MIN AMPLITUDE	MAX AMPLITUDE
500.0	475.0	0.236	57	-3069.730	5223.059
600.0	574.1	0.280	56	-1508.950	2096.945
610.0	614.0	0.297	55	-1418.877	3010.427
620.0	654.0	0.310	54	-1044.764	3041.327
630.0	693.9	0.326	53	-1344.841	2552.897
640.0	733.9	0.341	52	-1802.505	2544.761
650.0	773.8	0.357	51	-1728.556	2330.602
660.0	813.7	0.372	50	-1696.825	2222.242
670.0	853.7	0.385	49	-1609.971	2349.458
680.0	893.6	0.398	48	-1418.445	2069.258
690.0	933.6	0.413	47	-1341.381	1990.813
700.0	973.5	0.427	46	-1264.437	1921.214
710.0	1013.4	0.441	45	-1135.990	1571.977
720.0	1053.4	0.454	44	-1048.345	1458.834
730.0	1093.3	0.468	43	-984.997	1347.995
740.0	1133.3	0.482	42	-877.068	1298.738
750.0	1173.2	0.495	41	-799.306	1109.612
760.0	1213.2	0.508	40	-708.575	1147.999
770.0	1253.1	0.521	39	-715.990	1086.237
780.0	1293.0	0.534	38	-632.804	906.713
790.0	1333.0	0.547	37	-641.828	927.545
800.0	1372.9	0.559	36	-640.290	856.365
810.0	1412.9	0.572	35	-634.525	785.022
820.0	1452.8	0.587	34	-644.828	901.323
830.0	1492.7	0.601	33	-438.724	556.258
840.0	1532.7	0.615	32	-438.827	644.058
850.0	1572.6	0.628	30	-458.519	586.445
860.0	1612.6	0.644	29	-387.087	497.119
870.0	1652.5	0.657	28	-358.143	477.945
880.0	1692.5	0.661	24	-351.215	445.104
890.0	1732.4	0.669	23	-359.915	335.414
900.0	1772.4	0.681	21	-348.473	288.855
910.0	1812.3	0.693	19	-353.810	281.798
920.0	1852.3	0.701	17	-321.809	255.119
930.0	1892.2	0.714	15	-337.151	265.498
940.0	1932.1	0.723	13	-301.384	341.515
950.0	1972.1	0.734	11	-184.733	223.632
960.0	2012.0	0.746	9	-191.262	244.379
970.0	2051.9	0.756	7	-175.353	300.098
980.0	2091.8	0.765	5	-163.261	198.308
990.0	2131.8	0.775	3	-136.803	150.952
2160.0	2131.8	0.785	1	-146.465	137.876



COMPANY: BHP PETROLEUM  
 FIELD: WILDCAT  
 WELL: MINERVA -2A  
 COUNTRY: AUSTRALIA

