



MELBOURNE LOG
INTERPRETATION
CENTRE

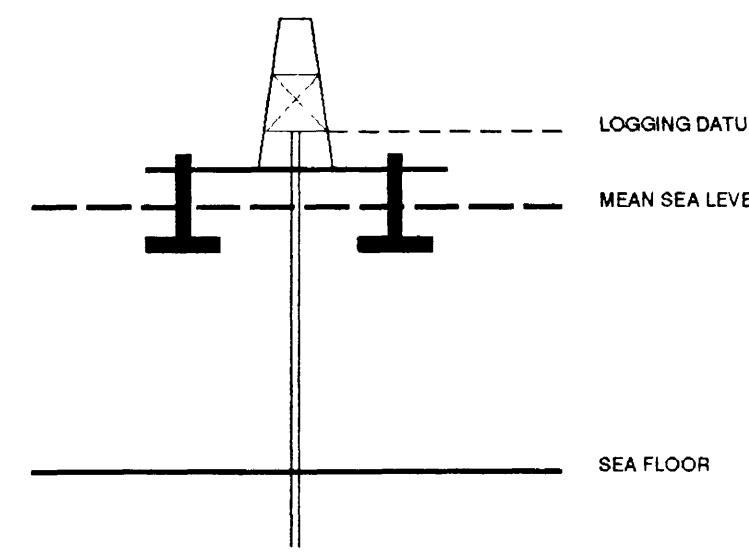
VERTICAL SEISMIC PROFILE



ZERO OFFSET VSP PLOT 7
NORMAL POLARITY
VSP AND GEOPHASE COMPOSITE

Company: BHP PETROLEUM
Well: LA BELLA-1
Field: WILDCAT
Country: AUSTRALIA
Reference No: 560875 Interval: 2743.00 to 620.00
Date Logged: 11-FEB-1993 Date Processed: 17/2/92
Location: 39 00' 14.2" S 142 41' 42.9" E
Elevations: KB: 25.30 DF: 25.00 GL: -95.00
Permanent Datum: MSL Depth Units: METRES
FIELD RECORDING Engineer: M HELWIG Location: Program Version: 580-325
COMPUTATION: Analyst: Z.KATELIS Centre: SYD Baseline: 20.2

ELEVATION ABOVE MEAN SEA LEVEL
Logging Datum: 25.00
Seismic Reference Datum: 0.00



Total Number of Levels: 110
Depth Reference: SRD
Time Reference: SRD

Run	Date	Tool Type	Bit Size	Casing Size	Top Depth	Bottom Depth
1	30-1-93	AS			1787	120
2	8-2-93	SOT			2375	1785.5

VSP Run	Date	Gun Offset	Hydro Offset	Gun Elevation	Hydro Elevation	Gun Azimuth	Hydro Azimuth
1	30-JAN-1993	47 M	47 M	10 M BELOW MSL	17 M BELOW MSL	50.0	50.0
2	11-FEB-1993	47 M	47 M	10 M BELOW MSL	17 M BELOW MSL	50.0	50.0

FOLD HERE

All interpretations are opinions based on information received from electrical or other measurements and we cannot, and do not guarantee the accuracy or correctness of any interpretations, and we shall not, except in the case of gross or willful negligence on our part, be liable or responsible for any loss, costs, damages or expenses incurred by or for any person or persons in connection with any use of any of our services, equipment or information. These interpretations are also subject to Clause 4 of our General Terms and Conditions as set out in our current Price Schedule.

**** WAVESHAPING-AGC ****
 ENHANCED UPGOING WAVEFIELD
 PROCESSING SEQUENCE:
 SCALE : 10 CM/SEC
 POLARITY (S.E.G.): NORMAL

**** CORRIDOR STACK-AGC ****

**** 25 HZ GEOGRAM ****
ZERO PHASE

**** 35 HZ GEOGRAM ****
ZERO PHASE

**** 45 HZ GEOGRAM ****
ZERO PHASE

**** INVERTED IMPEDANCE ****

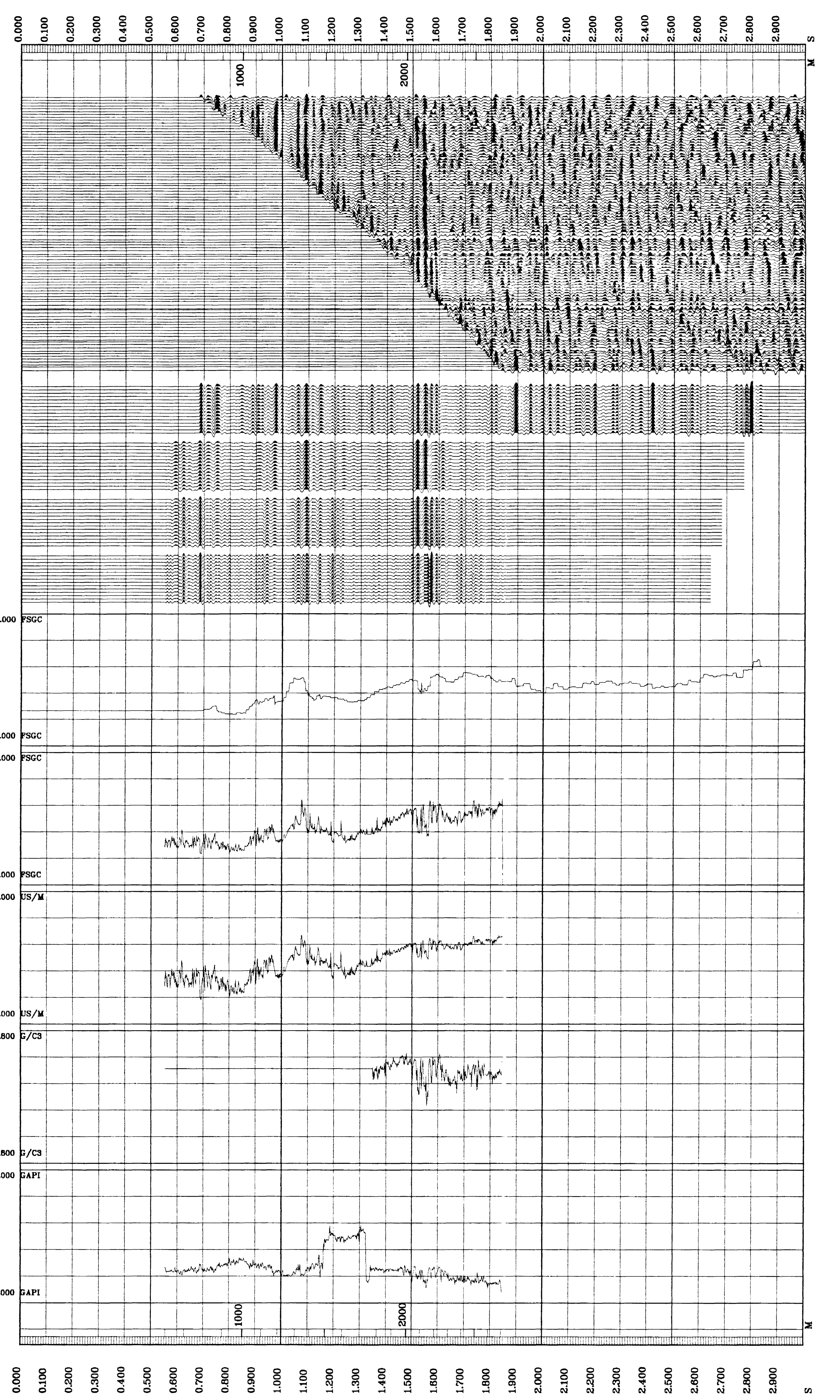
**** LOGGED IMPEDANCE ****

**** SONIC ****

**** DENSITY ****

**** GAMMA RAY ****

RAW DEPTH M	TRUE VERTICAL DEPTH M	TRANSIT TIME S	LEVEL NO
775.0	775.0	0.510	
800.0	800.0	0.520	
825.0	825.0	0.530	
850.0	850.0	0.540	
875.0	875.0	0.550	
900.0	900.0	0.560	
925.0	925.0	0.570	
950.0	950.0	0.580	
975.0	975.0	0.590	
1000.0	1000.0	0.600	
1025.0	1025.0	0.610	
1050.0	1050.0	0.620	
1075.0	1075.0	0.630	
1100.0	1100.0	0.640	
1125.0	1125.0	0.650	
1150.0	1150.0	0.660	
1175.0	1175.0	0.670	
1200.0	1200.0	0.680	
1225.0	1225.0	0.690	
1250.0	1250.0	0.700	
1275.0	1275.0	0.710	
1300.0	1300.0	0.720	
1325.0	1325.0	0.730	
1350.0	1350.0	0.740	
1375.0	1375.0	0.750	
1400.0	1400.0	0.760	
1425.0	1425.0	0.770	
1450.0	1450.0	0.780	
1475.0	1475.0	0.790	
1500.0	1500.0	0.800	
1525.0	1525.0	0.810	
1550.0	1550.0	0.820	
1575.0	1575.0	0.830	
1600.0	1600.0	0.840	
1625.0	1625.0	0.850	
1650.0	1650.0	0.860	
1675.0	1675.0	0.870	
1700.0	1700.0	0.880	
1725.0	1725.0	0.890	
1750.0	1750.0	0.900	
1775.0	1775.0	0.910	
1800.0	1800.0	0.920	
1825.0	1825.0	0.930	
1850.0	1850.0	0.940	
1875.0	1875.0	0.950	
1900.0	1900.0	0.960	
1925.0	1925.0	0.970	
1950.0	1950.0	0.980	
1975.0	1975.0	0.990	
2000.0	2000.0	1.000	
2025.0	2025.0	1.010	
2050.0	2050.0	1.020	
2075.0	2075.0	1.030	
2100.0	2100.0	1.040	
2125.0	2125.0	1.050	
2150.0	2150.0	1.060	
2175.0	2175.0	1.070	
2200.0	2200.0	1.080	
2225.0	2225.0	1.090	
2250.0	2250.0	1.100	
2275.0	2275.0	1.110	
2300.0	2300.0	1.120	
2325.0	2325.0	1.130	
2350.0	2350.0	1.140	
2375.0	2375.0	1.150	
2400.0	2400.0	1.160	
2425.0	2425.0	1.170	
2450.0	2450.0	1.180	
2475.0	2475.0	1.190	
2500.0	2500.0	1.200	
2525.0	2525.0	1.210	
2550.0	2550.0	1.220	
2575.0	2575.0	1.230	
2600.0	2600.0	1.240	
2625.0	2625.0	1.250	
2650.0	2650.0	1.260	
2675.0	2675.0	1.270	
2700.0	2700.0	1.280	
2725.0	2725.0	1.290	
2750.0	2750.0	1.300	



COMPANY: BHP PETROLEUM
 FIELD: WILDCAT
 WELL: LA BELLA-1
 COUNTRY: AUSTRALIA