

GEOGRAM*

(Synthetic Seismogram)

35 HZ

Company: ESSO AUSTRALIA LTD.
 Well: SMILER-1
 Field: WILDCAT
 Country: AUSTRALIA
 Reference No: SVL501131/561192 Interval: 2614.00 to 182.00
 Date Logged: 13-JULY-1995 Date Processed: 21-JULY-1995
 Location: 038 28 55.18' S 148 23 17.09' E
 Elevations: KB: 25.00 DF: 24.70 GL: -122.00
 Permanent Datum: MSL Depth Units: METRES

LOG INFORMATION

FIELD RECORDING Engineer: R. JOHNSON'S HOOD/KAMARON VEA Program Version: 709-47
 COMPUTATION Analyst: A. WILSON/NO Centre: SVI Baseline: 20.5
 Logging Datum: ELEVATION ABOVE MEAN SEA LEVEL 25.00
 Seismic Reference Datum: 0.00
 Sonic Calibration By/Check Shots: YES Sonic Edited By/Analyst: YES
 Two-Way Time Sample Interval: 2 ms Environment:

True Vertical Depth Corrections Applied:
 Source of True Vertical Depth Data:
 Measurment Hole Deviation: 0

Run	Date	Tool Type	BS Stm Depth	Change Stm Depth	Top Depth	Bottom Depth
ONE	04-07-1995	AS-DL	17.5 IN		170 M	757 M
TWO	12-07-1995	DL-LD-CAS	12.25 IN		745 M	2005 M
VSP	Date	Gun	Hydro	Gun	Hydro	Gun
ONE	13-07-1995	50 M	50 M	5 M BELOW HRS	10 M BELOW HRS	60 DEG

GEOGRAM MODEL ASSUMPTIONS

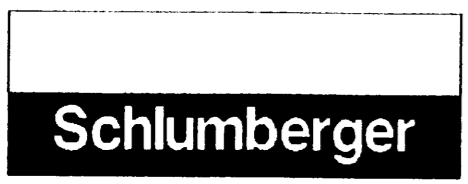
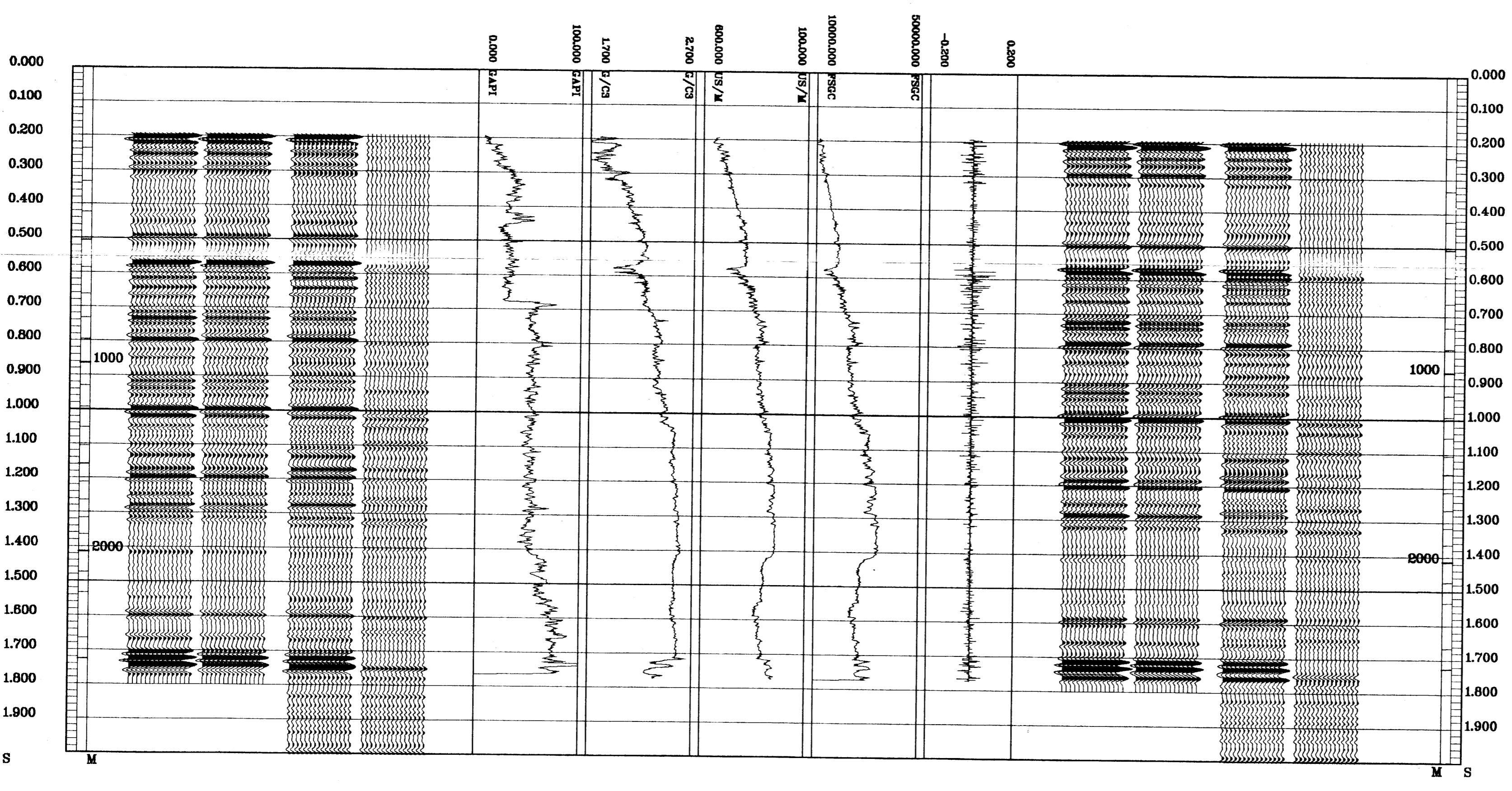
Equal time slice model of horizontal plane layers.
 Plane acoustic waves at normal incidence.
 No intrinsic attenuation.
POLARITY
 An upgoing wave, reflected by an increase in acoustic impedance with depth, is displayed as a white trough under normal polarity.
SIGNATURES
 All signatures displayed in the Geogram results correspond to a wavelet convolved with a reflection coefficient of -0.5 (A decrease in acoustic impedance with depth).

REMARKS

The well name, location and borehole reference data were furnished by the customer.
 All interpretations are opinions based on inferences from electrical or other measurements and we cannot, and do not guarantee the accuracy or correctness of any interpretations, and we shall not, except in the case of gross or willful negligence on our part, be liable or responsible for any loss, costs, damages or expenses incurred or sustained by anyone resulting from any interpretations made by any of our officers, agents or employees. These interpretations are also subject to Clause 4 of our General Terms and Conditions as set out in our current Price Schedule.

**** GEOGRAM ****
35 HERTZ ZERO PHASE RICKER WAVELET
 VERTICAL SCALE = 10 CM/SEC

MULTIPLES ONLY REVERSE POLARITY
PRIMARYS AND MULTIPLES REVERSE POLARITY
PRIMARYS WITH TRANSMISSION LOSS REVERSE POLARITY
PRIMARYS REVERSE POLARITY
REFLECTION
ACOUSTIC IMPEDANCE
SONIC
DENSITY
GAMMA RAY
MULTIPLES ONLY NORMAL POLARITY
PRIMARYS AND MULTIPLES NORMAL POLARITY
PRIMARYS WITH TRANSMISSION LOSS NORMAL POLARITY
PRIMARYS NORMAL POLARITY



COMPANY ESSO AUSTRALIA LTD.
 FIELD WILDCAT
 WELL SMILER-1
 COUNTRY AUSTRALIA