



# VERTICAL SEISMIC PROFILE

**ZERO OFFSET VSP**      **PLOT 5a**  
**WAVESHAPING & CORRIDOR STACK**  
(-90 DEG. phase)

Company: ESSO AUSTRALIA LTD.

Well: SMILER-1

Field: WILDCAT

Country: AUSTRALIA

Reference No: SY/56113/561132 Interval: 2614.00 to 182.00

Date Logged: 13-JULY-1995 Date Processed: 21-JULY-1995

Location: 038 28' 55.18" S      148 23' 17.09" E

Elevations: KB: 25.00      DF: 24.70      QL: -122.00

Permanent Datum: MSL      Depth Units: METRES

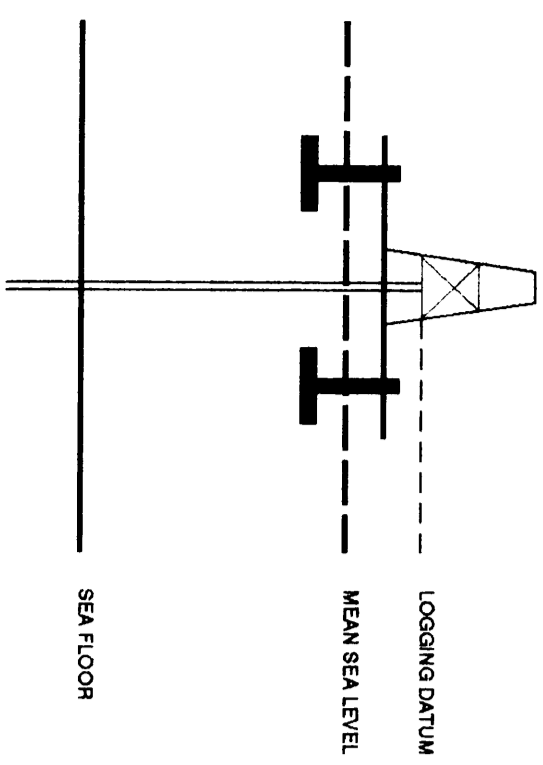
FIELD RECORDS      Engineer: R. JOHNSON      Recommendation: VSA      Program Version: T05-47

COMPUTATION: Analyst: A. WISSONIG      Criteria: SVJ      Software: 26.5

ELEVATION ABOVE MEAN SEA LEVEL

Logging Datum: 25.00

Static Reference Datum: 0.00



Total Number of Levels: 29  
Depth Reference: SPD

Time Reference		SPD	
Date	Time	Depth	SPD
ONE	04:07:166	AS-LOL	
TWO	13:07:166	D1L1D1A4	12.26 M

Run	Date	Tool	Type	Br Size	Depth	Casing Size	Depth	Top	Depth	Bottom
VSP	04/07/1995	AS-LOL	AS-LOL	178 IN	797 M			170 M	797 M	
VSP	13/07/1995	50 M	50 M	Hydro	12.26 M	10 M BELOW MSL	5 M BELOW MSL	69 DEG	69 DEG	69 DEG

REMARKS

The well name, location and borehole reference data were furnished by the customer.  
All interpretations are opinions based on inferences from electrical or other measurements and we cannot, and do not guarantee the accuracy or correctness of any interpretations, and we shall not, except in the case of gross or willful negligence on our part, be liable or responsible for any loss, cost, damage or expense incurred or sustained by anyone resulting from any interpretations made by any of our officers, agents or employees. These interpretations are also subject to Clause 4 of our General Terms and Conditions as set out in our current Price Schedule.

**ZERO PHASE WITH -90 DEG PHASE SHIFT**

**\* CORRIDOR STACK + AGC \***  
AGC WINDOW : 300 MS  
POLARITY (S.E.G.) : REVERSE

**\* CORRIDOR STACK \***  
CORRIDOR WINDOW : 150 MS  
POLARITY (S.E.G.) : REVERSE

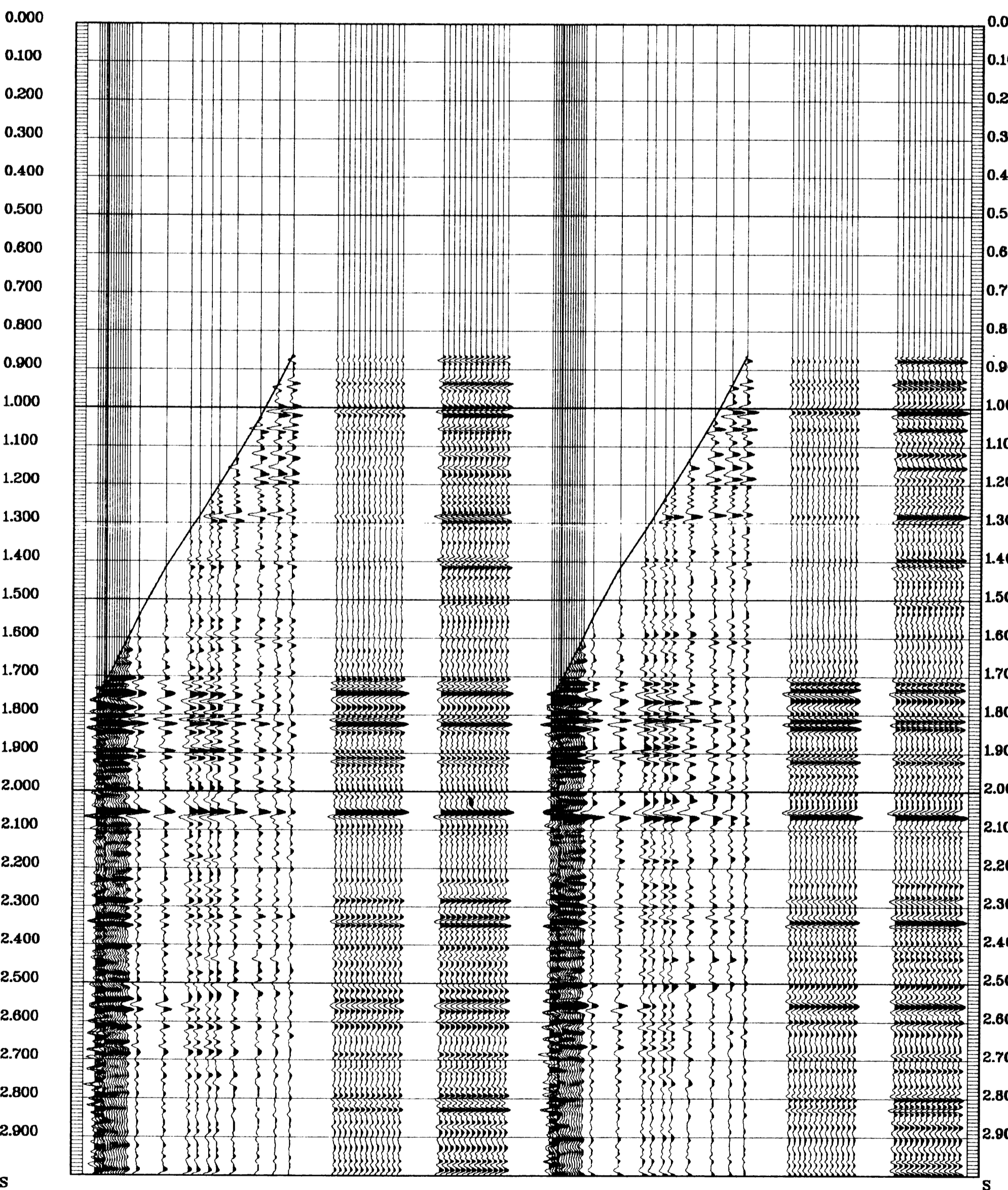
**\*\* WAVESHAPING \*\***  
WAVESHAPING DECONVOLUTION  
ZERO PHASE WITH -90 DEG PHASE SHIFT  
ENHANCED UPGOING WAVERFIELD  
PROCESSING SEQUENCE:  
MEDIAN STACK APPLIED

**\* CORRIDOR STACK + AGC \***  
AGC WINDOW : 300 MS  
POLARITY (S.E.G.) : NORMAL

**\* CORRIDOR STACK \***  
CORRIDOR WINDOW : 150 MS  
POLARITY (S.E.G.) : NORMAL

**\*\* WAVESHAPING \*\***  
WAVESHAPING DECONVOLUTION  
ZERO PHASE WITH -90 DEG PHASE SHIFT  
ENHANCED UPGOING WAVERFIELD  
PROCESSING SEQUENCE:  
MEDIAN STACK APPLIED

RAW DEPTH M	TRUE VERTICAL DEPTH MSL	TRANSIT TIME S	LEVEL NO
1820.0	1091.0	0.162	27
1840.0	1106.0	0.169	26
1860.0	1121.0	0.176	25
1880.0	1136.0	0.183	24
1900.0	1151.0	0.190	23
1920.0	1166.0	0.197	22
1940.0	1181.0	0.204	21
1960.0	1196.0	0.211	20
1980.0	1211.0	0.218	19
2000.0	1226.0	0.225	18
2020.0	1241.0	0.232	17
2040.0	1256.0	0.239	16
2060.0	1271.0	0.246	15
2080.0	1286.0	0.253	14
2100.0	1301.0	0.260	13
2120.0	1316.0	0.267	12
2140.0	1331.0	0.274	11
2160.0	1346.0	0.281	10
2180.0	1361.0	0.288	9
2200.0	1376.0	0.295	8
2220.0	1391.0	0.302	7
2240.0	1406.0	0.309	6
2260.0	1421.0	0.316	5
2280.0	1436.0	0.323	4
2300.0	1451.0	0.330	3
2320.0	1466.0	0.337	2
2340.0	1481.0	0.344	1



COMPANY    ESSO AUSTRALIA LTD.  
FIELD        WILDCAT  
WELL         SMILER-1  
COUNTRY     AUSTRALIA

