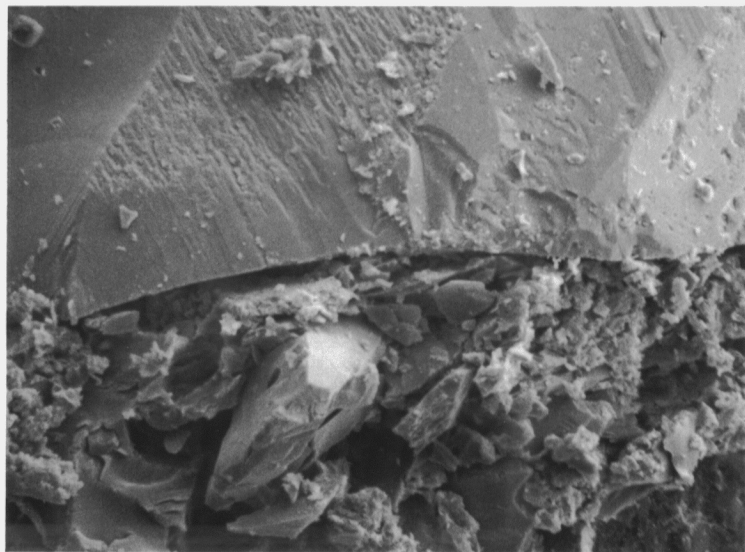


SEM Photo 1 2945m

Contact between coarse quartz
clast and silt sized slastic
Matrix featured quartz
(conchoidal fracture),
feldspar (cleavage fragments)
and micas.

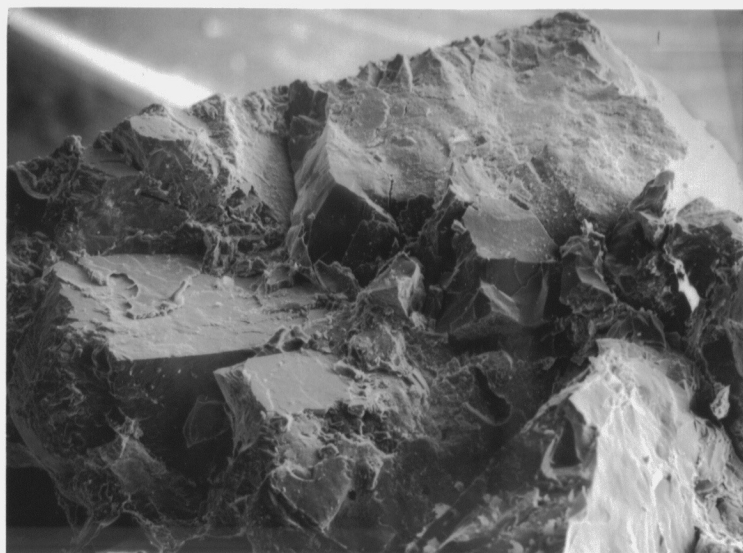
Width of field 500 microns.



SEM Photo 2 2945m

Surface of broken core chip
showing several microcline
crystals with face presentation
in part? Supporting immaturity
of sediment.

Width of field 2000 microns.



SEM Photo 3 2945m

Broken quartz macro clast with
accentuated curved fracture
development, possibly the result
of explosive sampling method.

Width of field 1000 microns.

